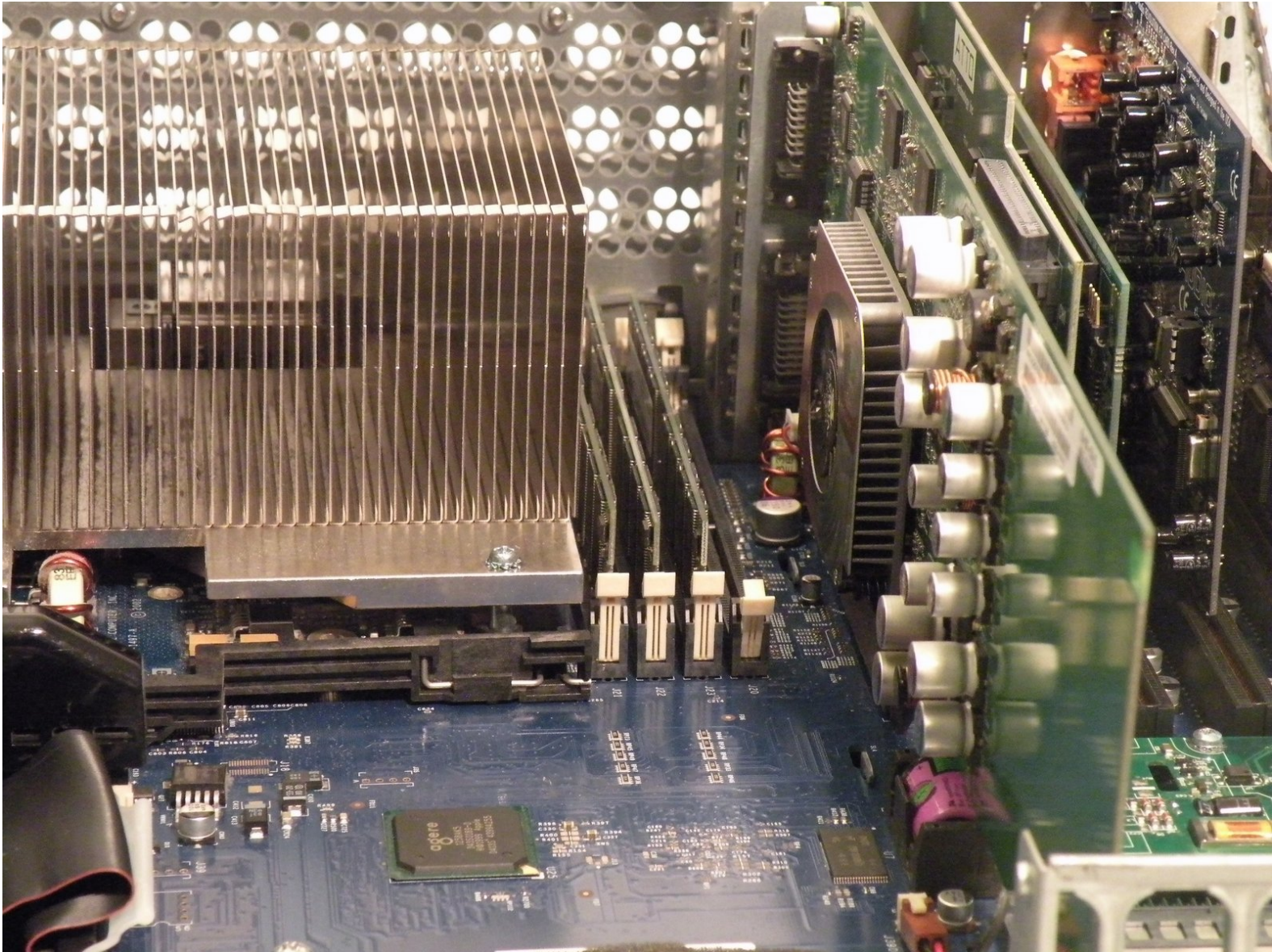




Power Mac G4 MDD RAM Replacement

Written By: Chris Green



INTRODUCTION

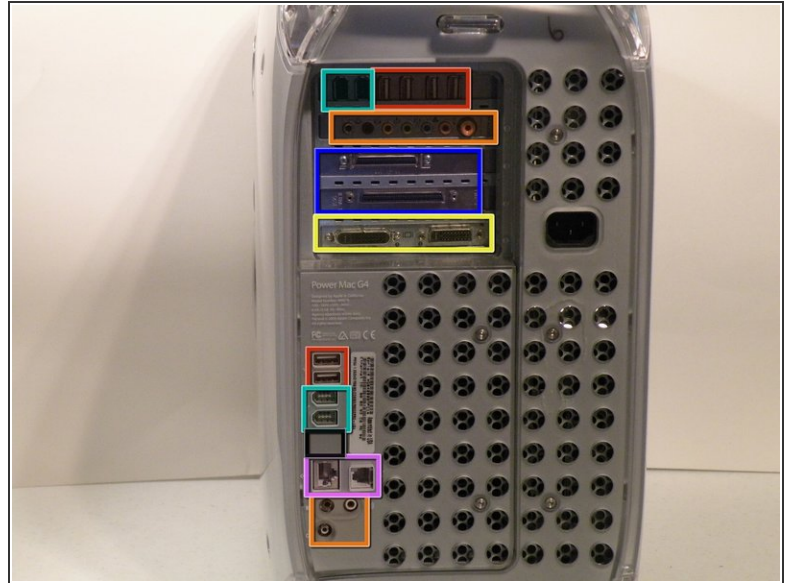
The Power Mac G4 MDD Supports 2GB 333Mhz PC2700 DDR (4X512MB Optimal). It Has four slots on the motherboard.



PARTS:

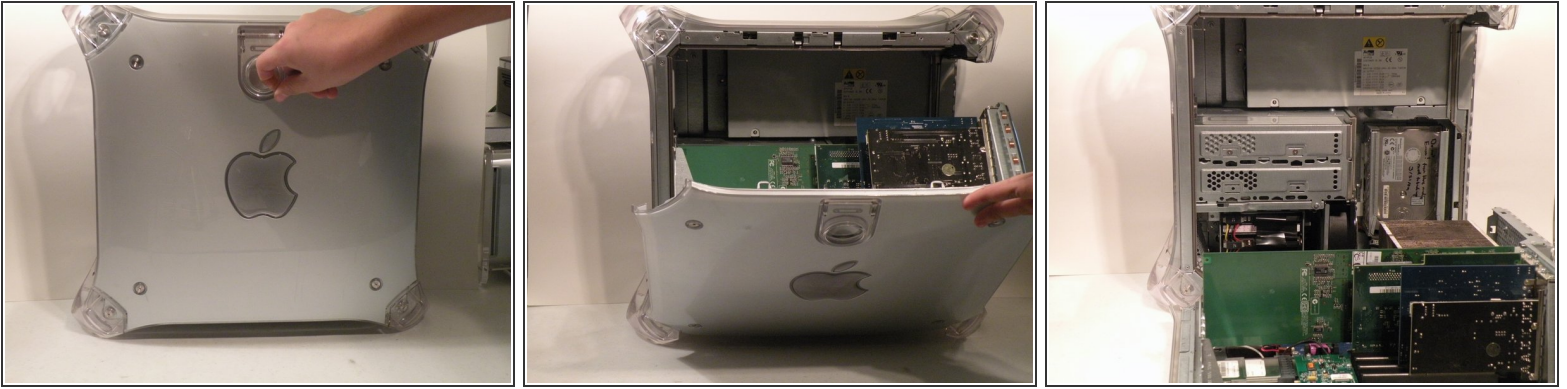
- [PC3200 512 MB RAM Chip \(Desktop\)](#) (1)
-

Step 1 — Case



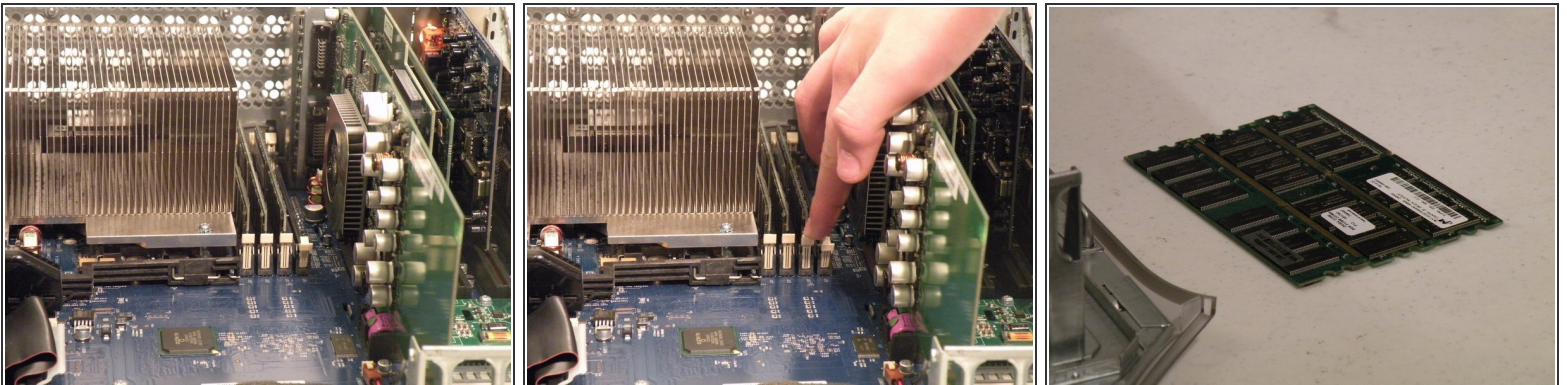
- The Power Mac G4 MDD: the last, and the fastest G4-based Mac. This computer boasted up to a Dual 1.42GHz PowerPC G4 CPU (though I have a single 1.25GHz).
- Six USB ports.
- Four FireWire ports.
- Assorted SCSI (SCSI50/SCSI68)
- Assorted Audio
- Video (ADC & DVI)
- Networking (RJ-45 Ethernet/56k Modem)
- Some later model MDD's (such as the dual 1.42GHz) Have a FireWire 800 Port Here:

Step 2



- Unplug the computer.
- Unplug the power supply and all external connections from the computer.
- Pull on the side lever and lower the side of the case.

Step 3 — RAM



- The ram is between the graphics card, and the CPU, and removal is simple. Push the tabs down on both sides, this will free the ram, then lift it out.
- The MDD Uses A Maximum of 2GB PC2700 DDR,(512MB X4) and had 4 slots for ram.

To reassemble your device, follow these instructions in reverse order.