



Power Mac G4 Quicksilver Central Processing Unit Replacement

Written By: Ryan Bylard



INTRODUCTION

Removing the CPU of the Power Mac G4 Quicksilver for replacement.



TOOLS:

- [Phillips #0 Screwdriver](#) (1)
-

Step 1 — Opening the case



- The handle to open your computer is located on top of the right side panel.

Step 2



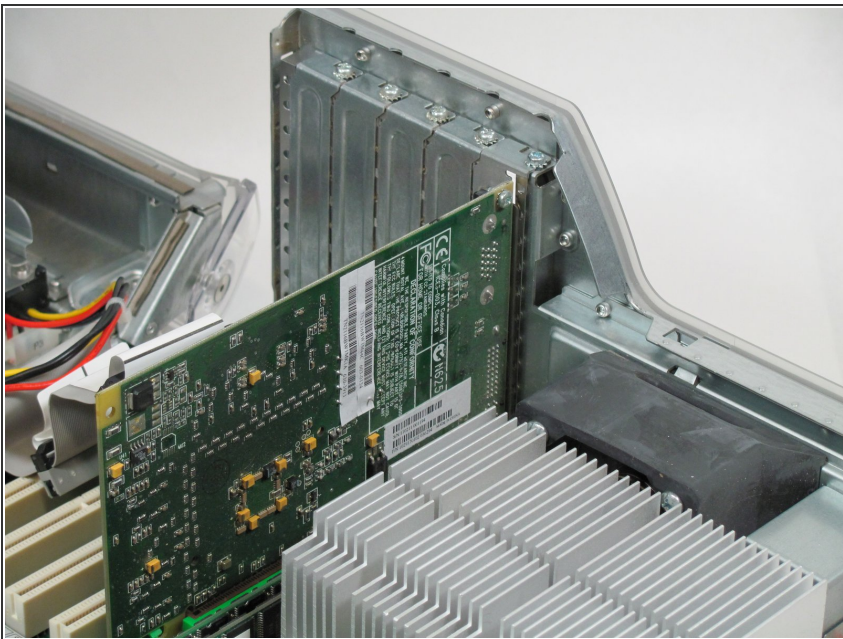
- Grab the circular handle and pull outward.

Step 3



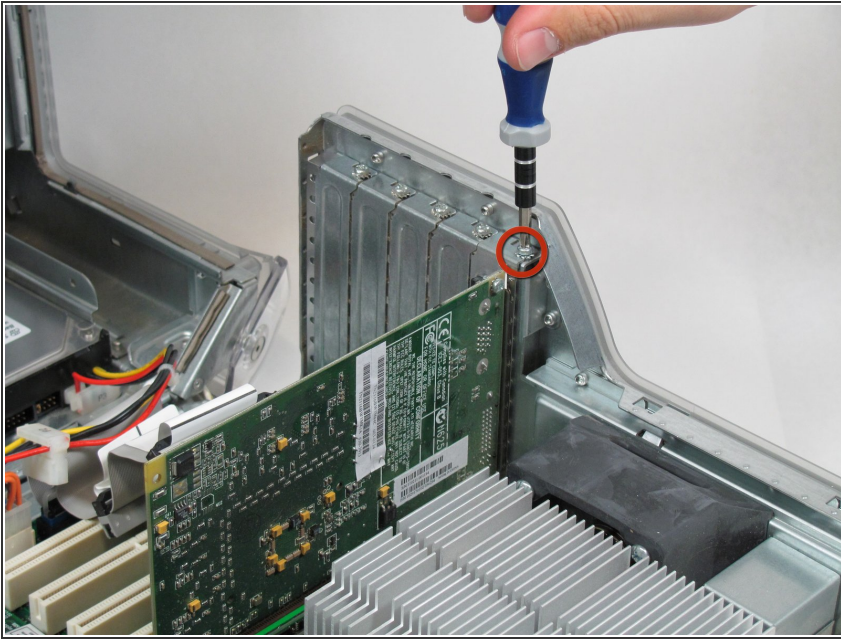
- Your computer is now open and ready for repair.

Step 4 — Video Adapter



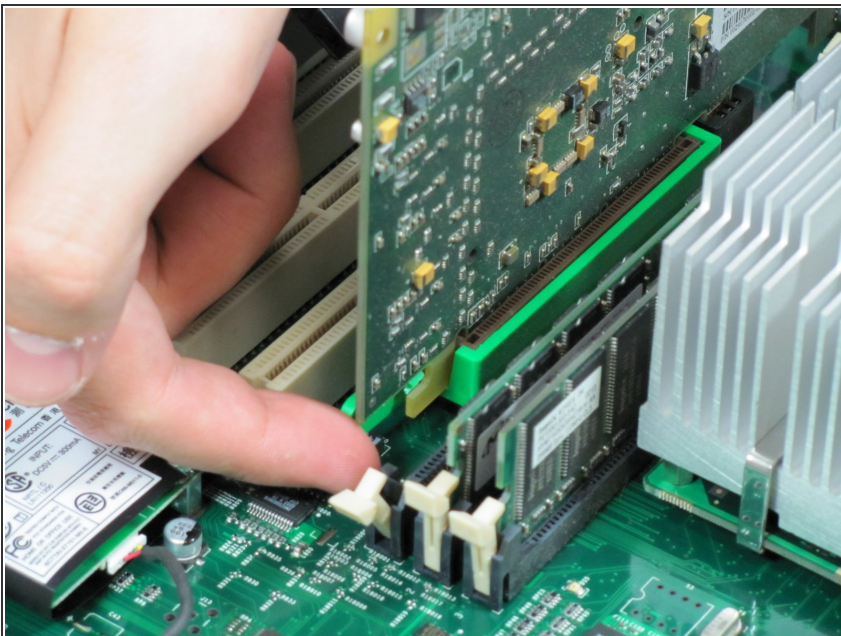
- This is your Power Mac G4's video adapter.

Step 5



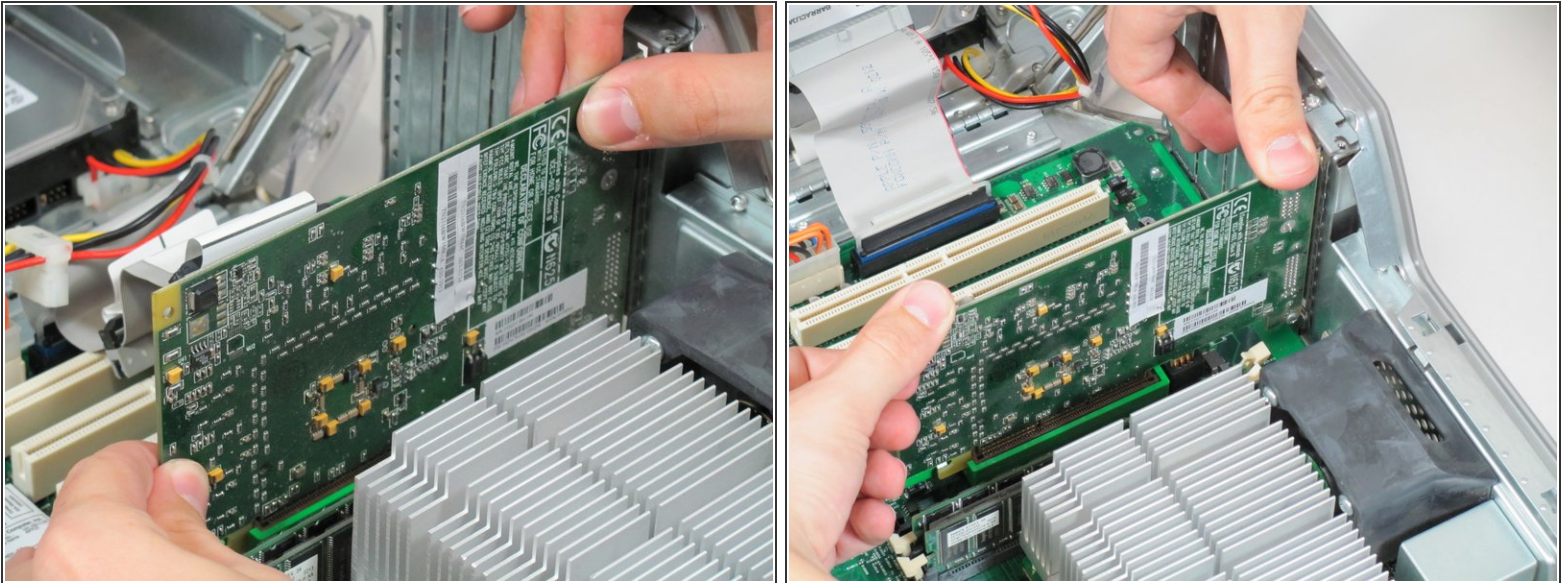
- Start by removing the screw holding the card to the chassis as shown.

Step 6



- Before lifting the card out, this small plastic tab needs to be pulled back there by releasing it entirely.

Step 7



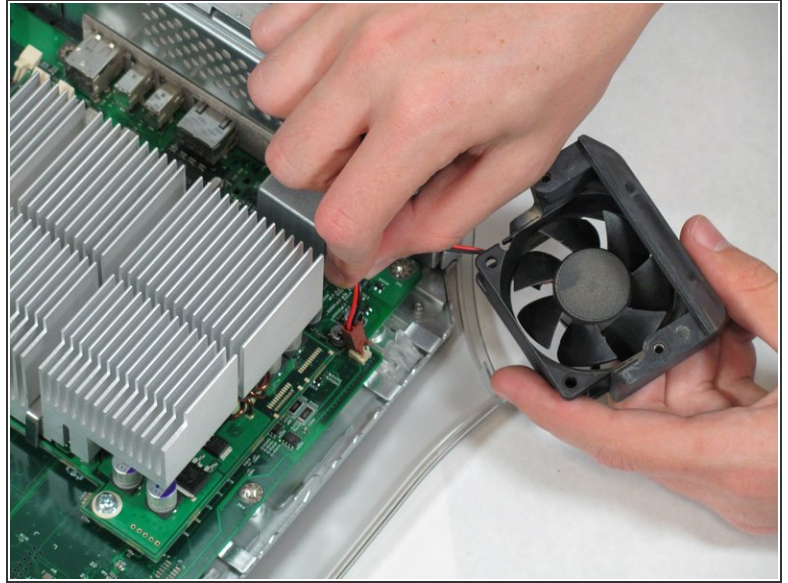
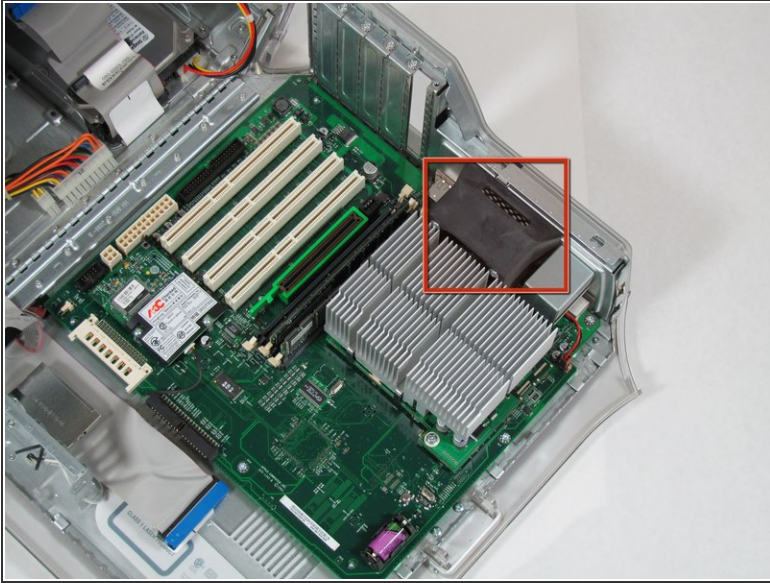
- With the tab and screw removed, lift the card straight out.
- ⓘ When putting the card back in, take care to apply even pressure across the top with your thumbs. This will avoid damaging the card.

Step 8 — Central Processing Unit



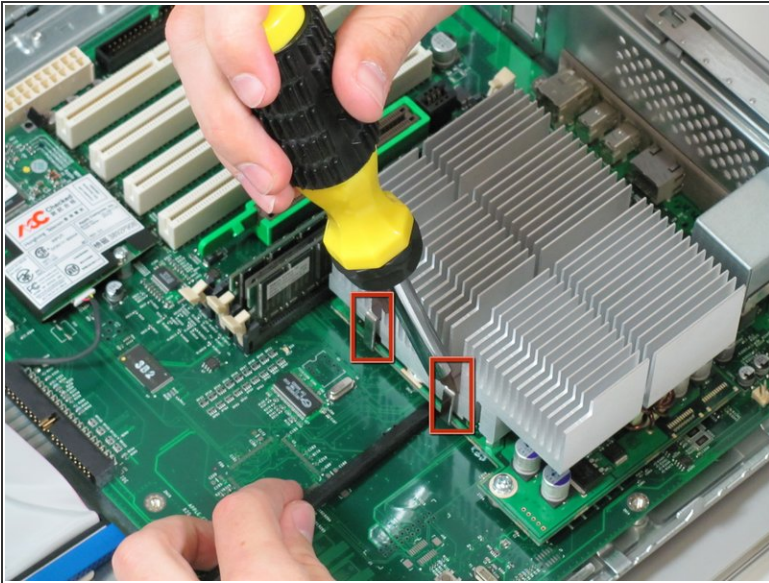
- First you want to remove the fan. Remove the two screws on the back of the computer in the upper left hand corner.

Step 9



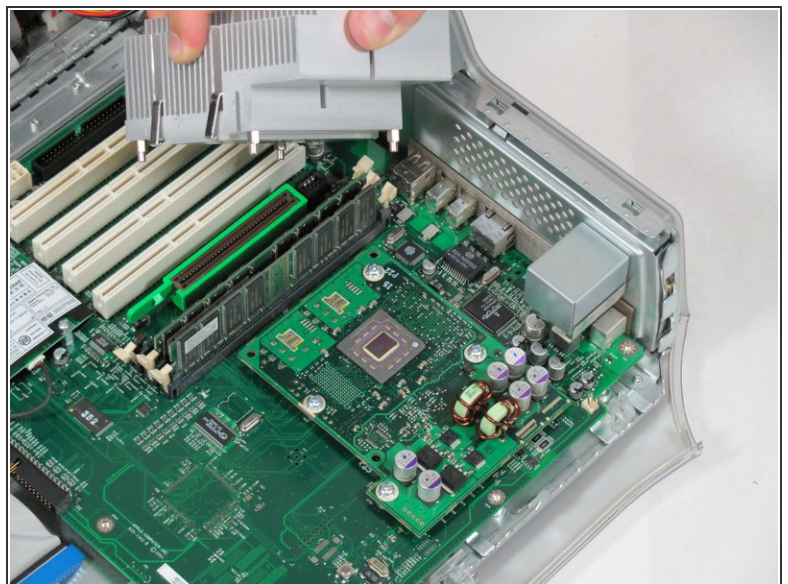
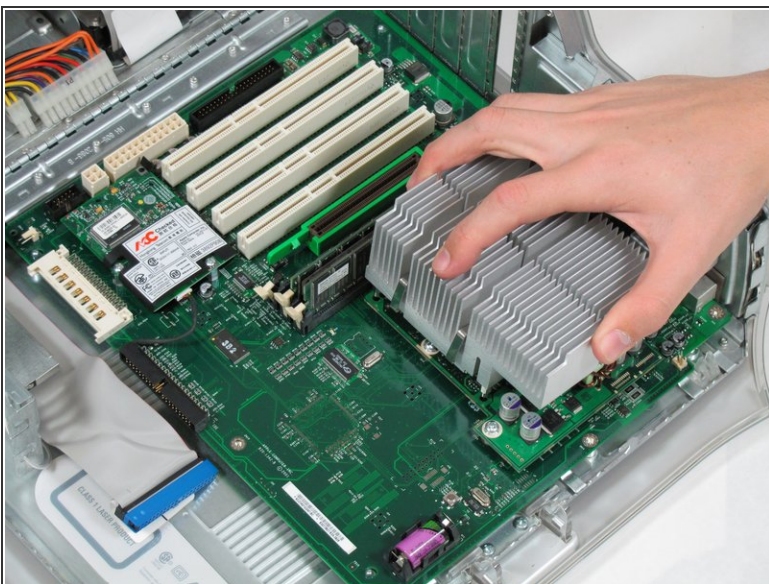
- Remove the fan unit by pulling straight up and out.
- ⓘ Be careful not to rip out the cord still attached to the motherboard. Remove it gently.

Step 10



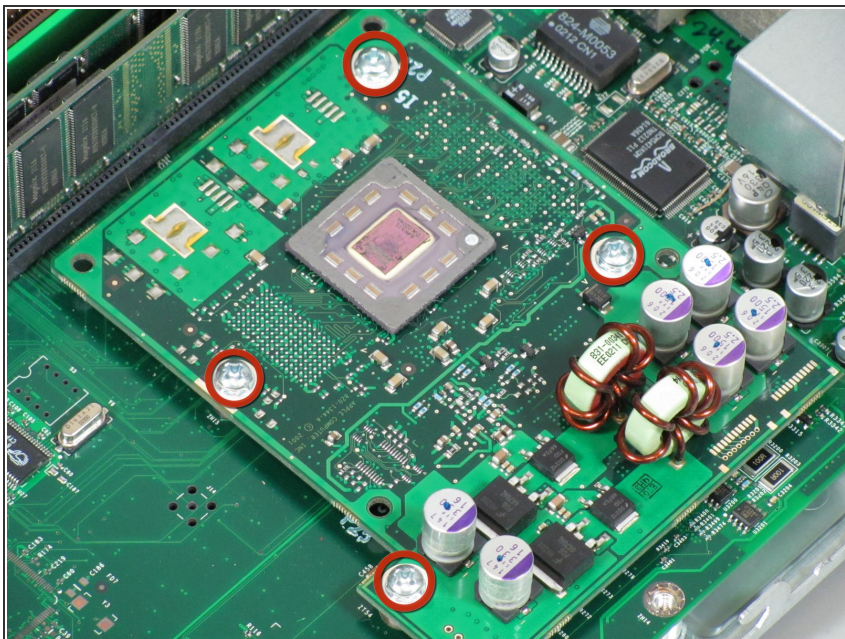
- You need detach the heat sink from the CPU. Locate the four clamps holding it down, two on each side.
- ⓘ Taking off the clamps can be difficult. Use a screwdriver to push down on the top of the clip. Then insert a spudger below the heat sink to pull it away from the board, releasing the heat sink.

Step 11



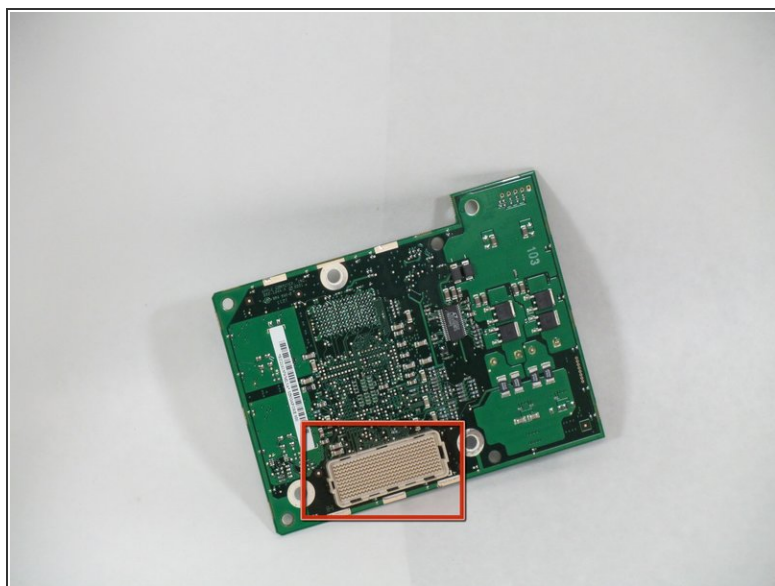
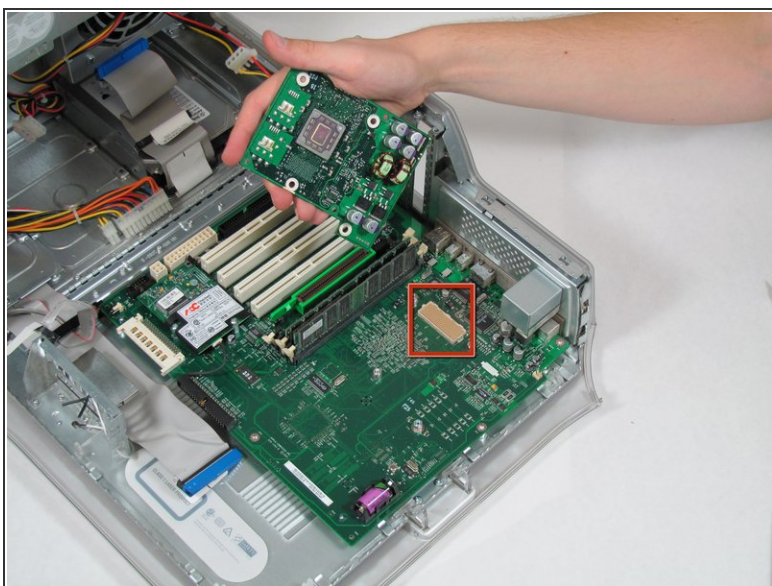
- Pull the heat sink up and off of the CPU.

Step 12



- Remove the four screws holding the CPU to the motherboard.

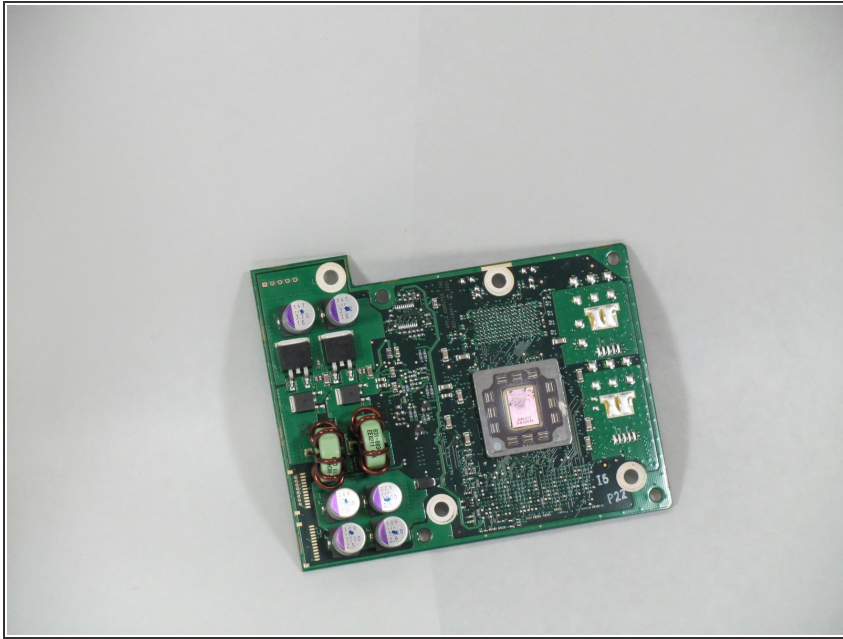
Step 13



- Now you can remove the CPU by pulling it straight up from the motherboard.

⚠ Be very careful when you detach the CPU. There is a connector that has hundreds of little prongs. You must not bend or break any of them! Be extremely careful.

Step 14



- You can now replace the CPU.

To reassemble your device, follow these instructions in reverse order.