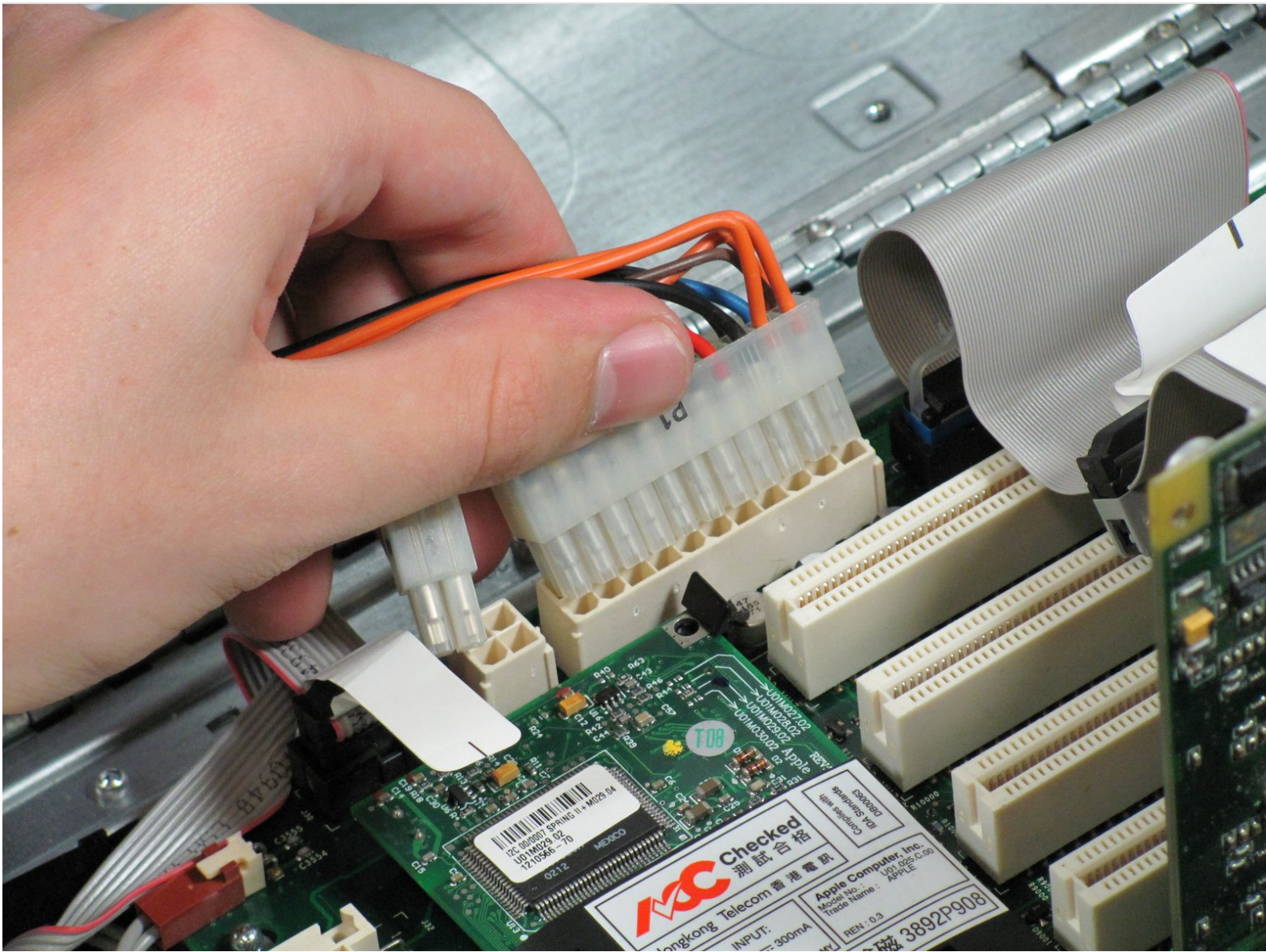




Power Mac G4 Quicksilver Logic Board Replacement

Be sure that you also remove the processor daughter card and the 3 screws that are underneath it. This will let the board slide of perfectly. If you don't remove these you will render the board useless forever!

Written By: Cameron Christensen



INTRODUCTION

Removing the mother board of the Power Mac G4 Quicksilver.



TOOLS:

- [Phillips #0 Screwdriver](#) (1)
-

Step 1 — Opening the case



- The handle to open your computer is located on top of the right side panel.

Step 2



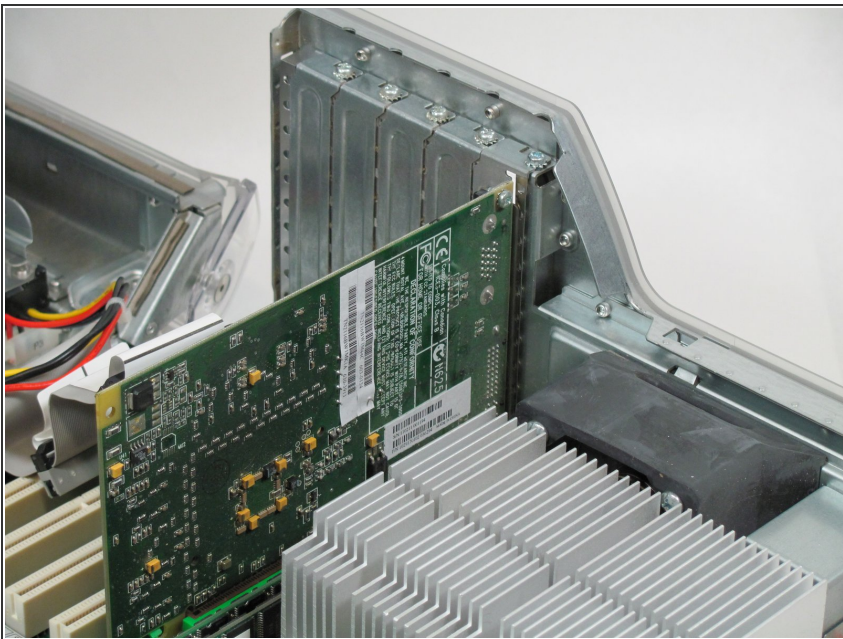
- Grab the circular handle and pull outward.

Step 3



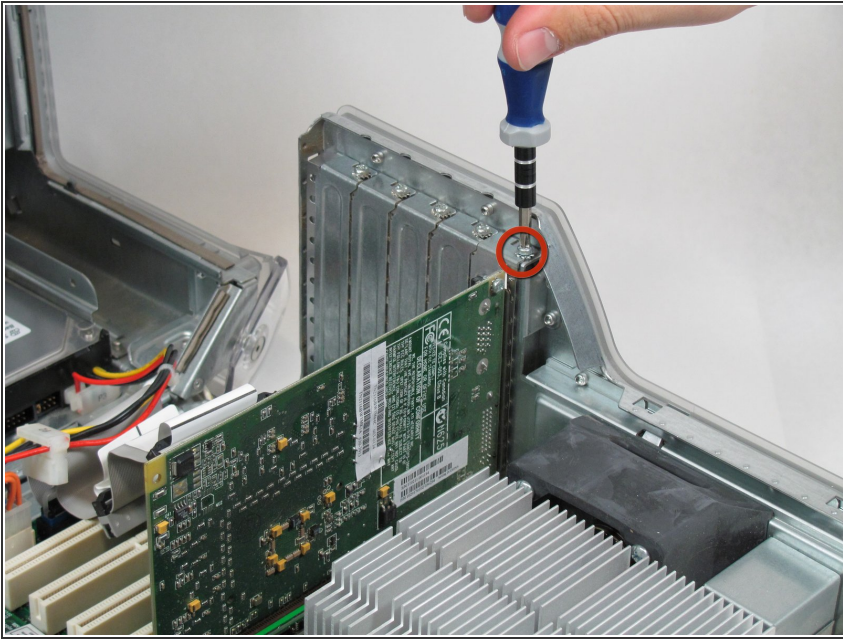
- Your computer is now open and ready for repair.

Step 4 — Video Adapter



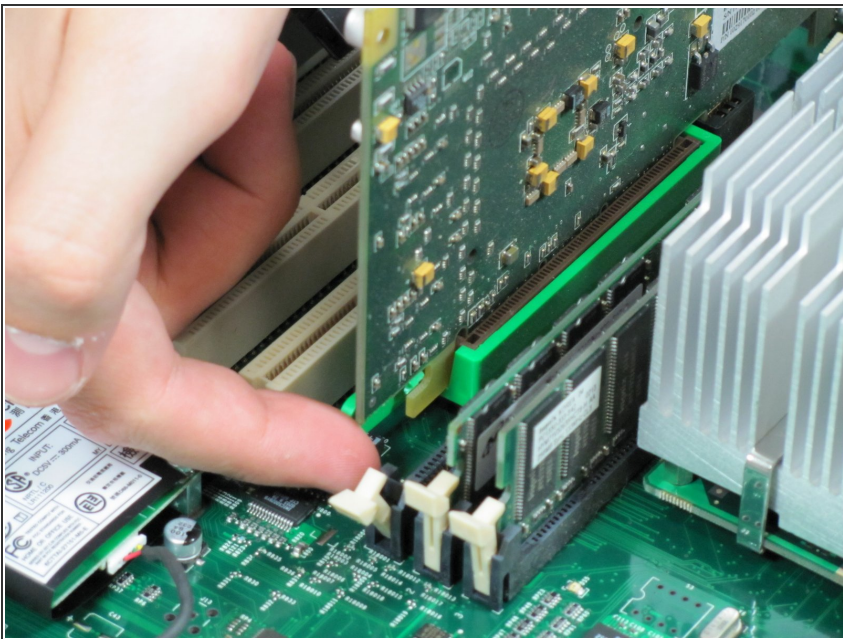
- This is your Power Mac G4's video adapter.

Step 5



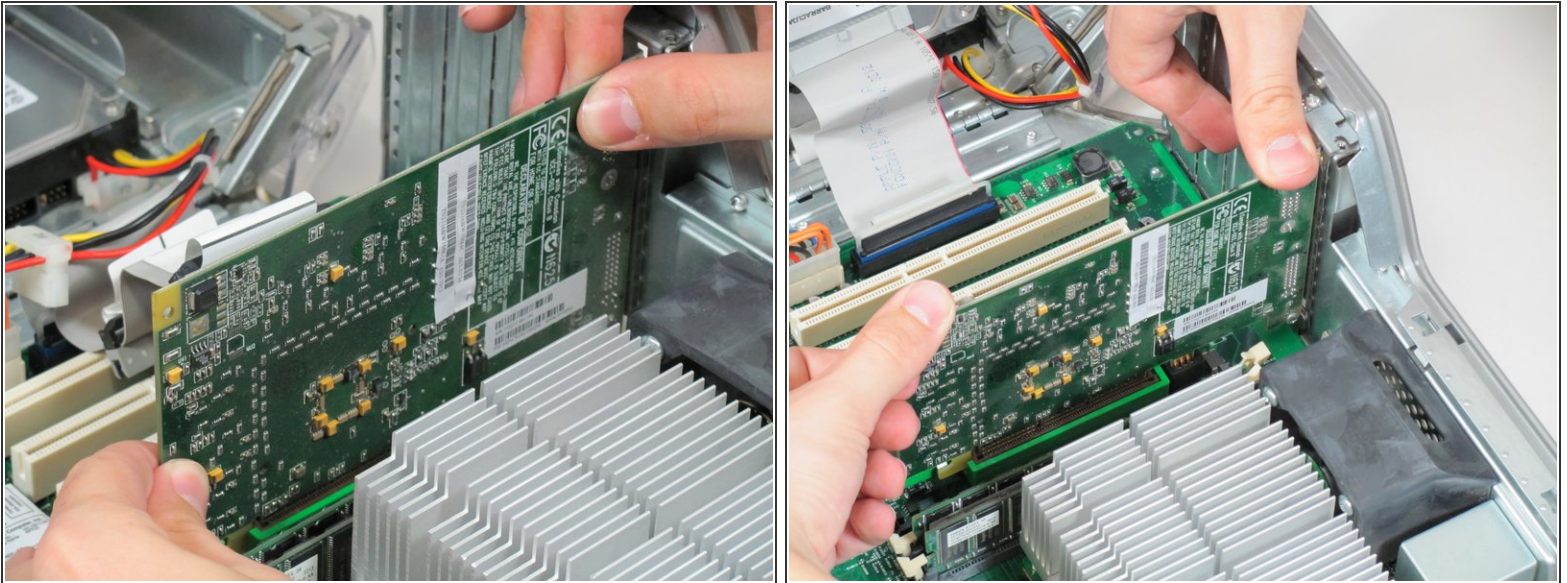
- Start by removing the screw holding the card to the chassis as shown.

Step 6



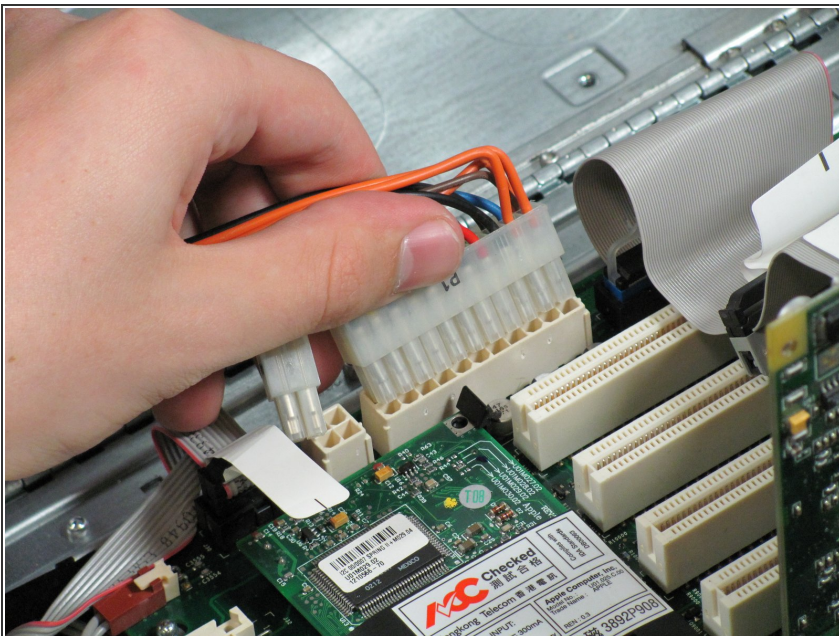
- Before lifting the card out, this small plastic tab needs to be pulled back there by releasing it entirely.

Step 7



- With the tab and screw removed, lift the card straight out.
- ⓘ When putting the card back in, take care to apply even pressure across the top with your thumbs. This will avoid damaging the card.

Step 8 — Logic Board



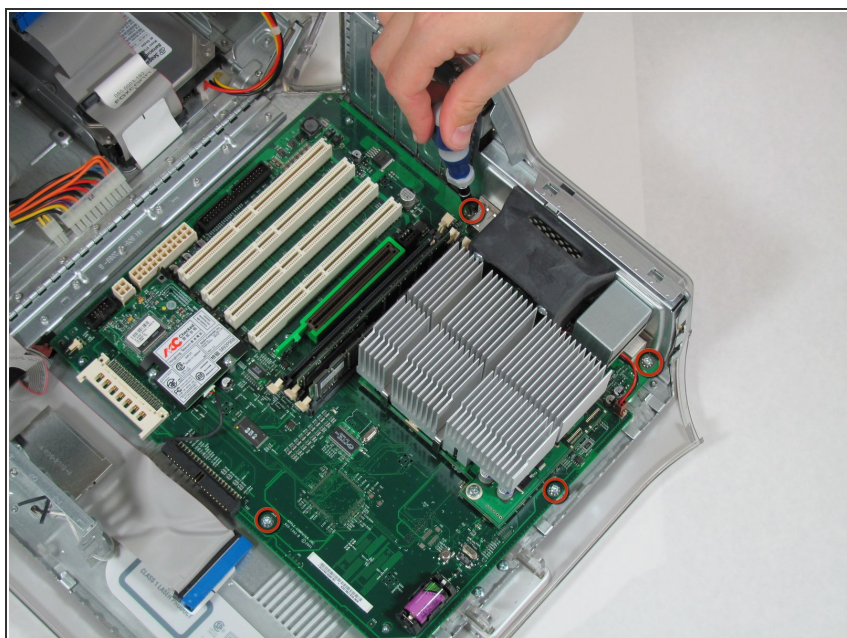
- Disconnect both the power cables and IDE cable from the mother board.

Step 9



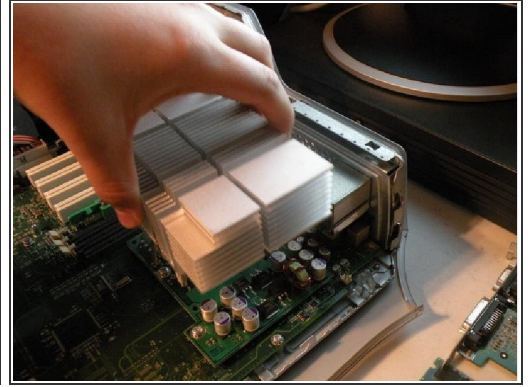
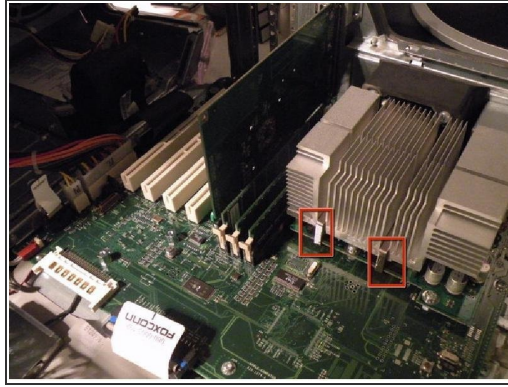
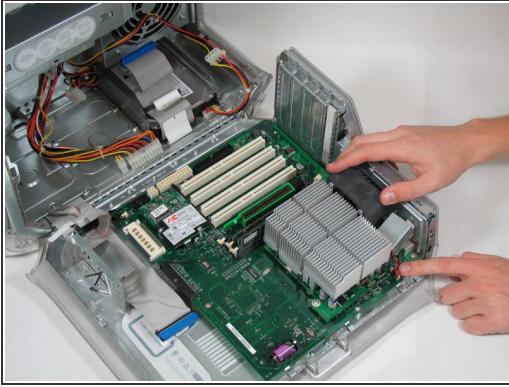
- Remove these three screws that hold the motherboard fan and modem connector to the chassis.

Step 10



- Remove the four screws shown to free the mother board from the chassis.

Step 11



- Lift the fan shroud and fan straight up and out. Take care to disconnect the indicated connector
- Remove the heatsink clamps with a flathead screwdriver and do the same for the other side.
- ⚠ Lift off the heatsink and remove the 4 screws of the CPU board.
- There are 4 pins: remove the 3 pins near the RAM but not the pin nearest You.
- You are now ready to slide gently (and without ANY difficult) the motherboard. Lift up and the game is done.

To reassemble your device, follow these instructions in reverse order.