



# Power Mac G4 Quicksilver Power Supply Replacement

Written By: Jacob Garcia



---

## INTRODUCTION

Removing the power supply of the Power Mac G4.



### TOOLS:

- [Phillips #0 Screwdriver](#) (1)
  - [2.5mm Hex Key](#) (1)
  - [Phillips #1 Screwdriver](#) (1)
  - [2.5 mm Hex Bit](#) (1)
-

## Step 1 — Opening the case



- The handle to open your computer is located on top of the right side panel.

## Step 2



- Grab the circular handle and pull outward.

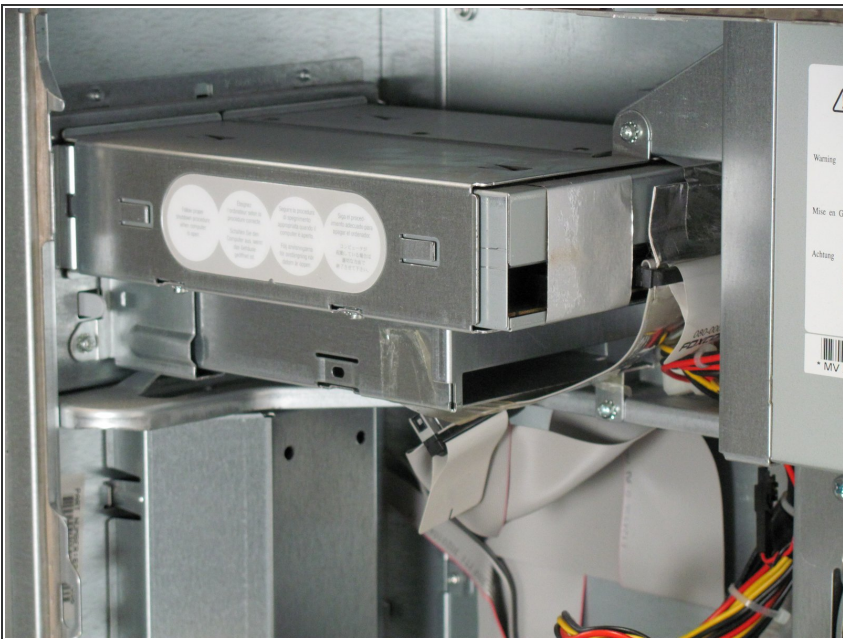


### Step 3



- Your computer is now open and ready for repair.

### Step 4 — Power Mac G4 Quicksilver Optical Drive Disassembly



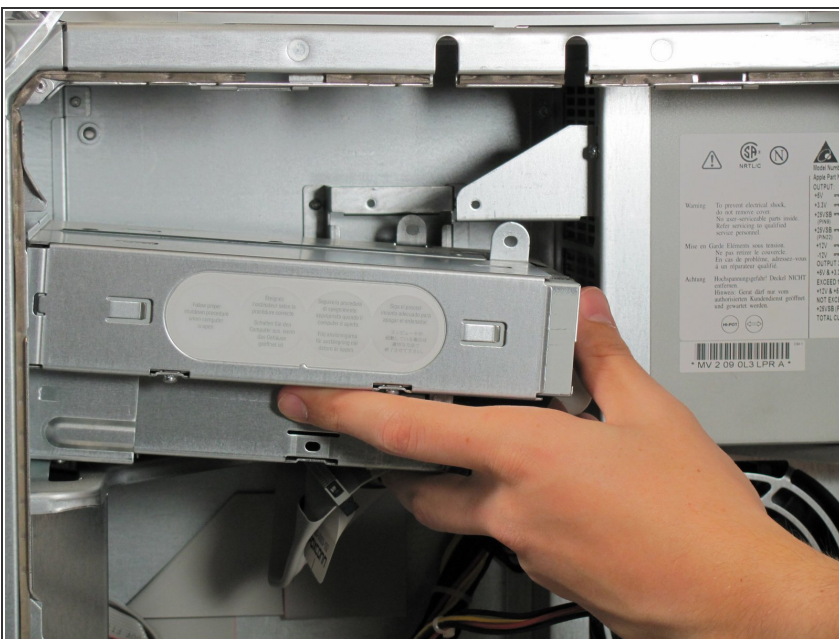
- The optical drive is in the top left corner of the case.

## Step 5



- There are four screws to be removed.
- The first screw can be seen in the first picture.
- The remaining three screws can be seen in the second picture.

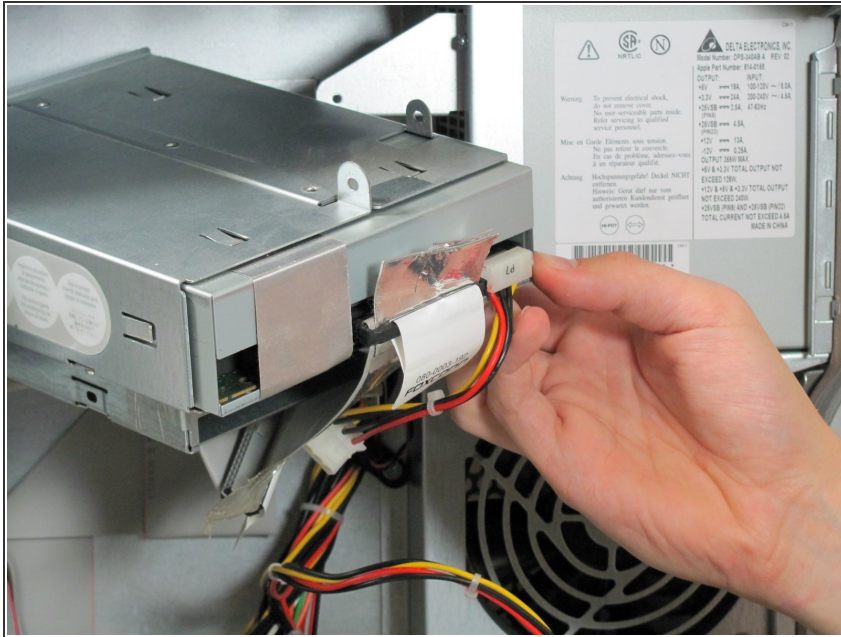
## Step 6



- Remove the optical drive by pulling the drive away from the front of the computer and out.



## Step 7



- Detach the two cables attached to the back of the drive.
- ⓘ The flat ribbon cable can be detached by pulling the silver tab. The multicolored cable can be removed by grasping the plastic connector on either side and pulling with substantial force.

## Step 8 — Hard Drive



- The hard drive is located in the back right corner of the case.

## Step 9



- Remove the flat ribbon cable by pulling with substantial force.

## Step 10



- Remove the screw holding the hard drive to the computer.



## Step 11



- Pull the drive up and out of the computer.

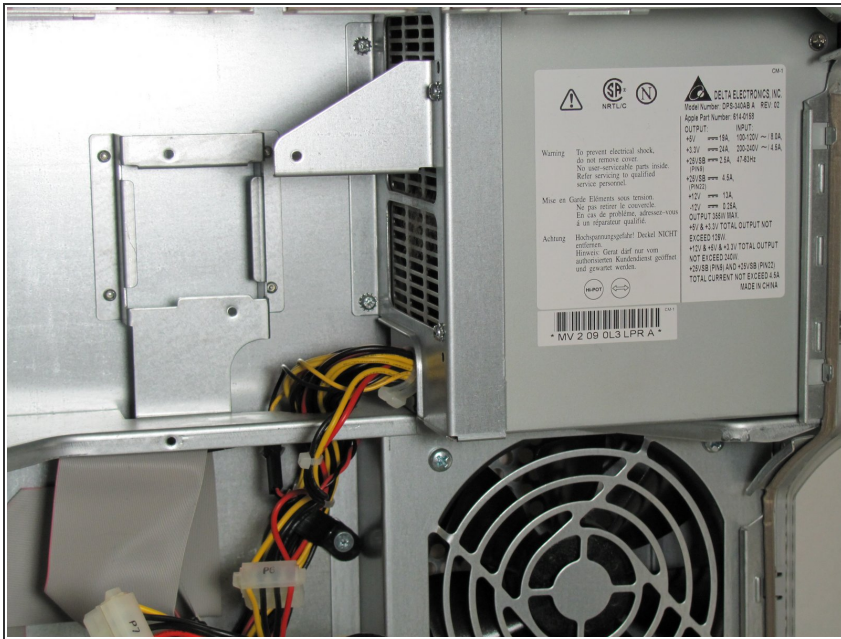
## Step 12



- Remove the multicolored cable by grasping the plastic connector on either side and pulling with substantial force.

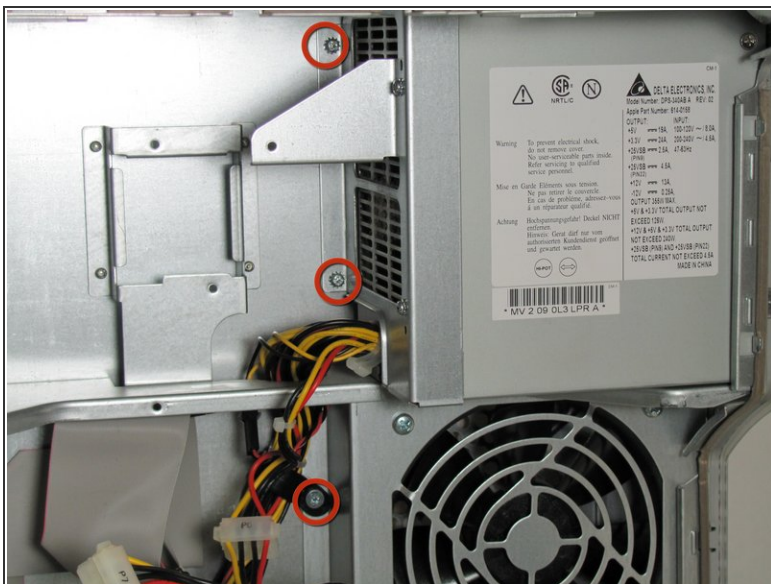


## Step 13 — Power Supply



- The power supply is in the upper right corner of the case.

## Step 14



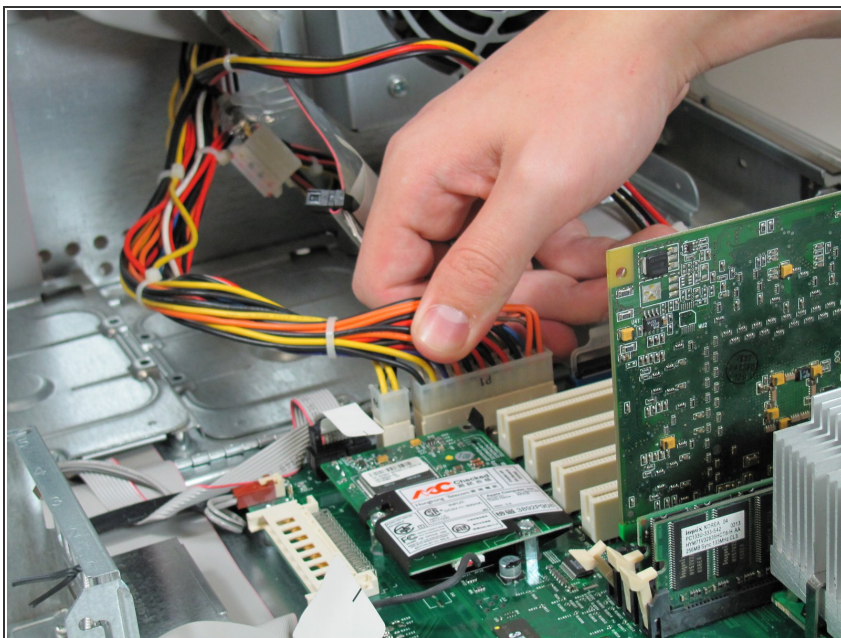
- There is a total of four screws to be removed.
- The first three can be seen in the first picture.
- The final screw can be seen in the second picture.

## Step 15



- There are three 2.5mm hex bolts located in the back of the computer that also need to be removed.
- A 3/32" Hex Key or Hex Driver is a bit small but may also work if gentle.

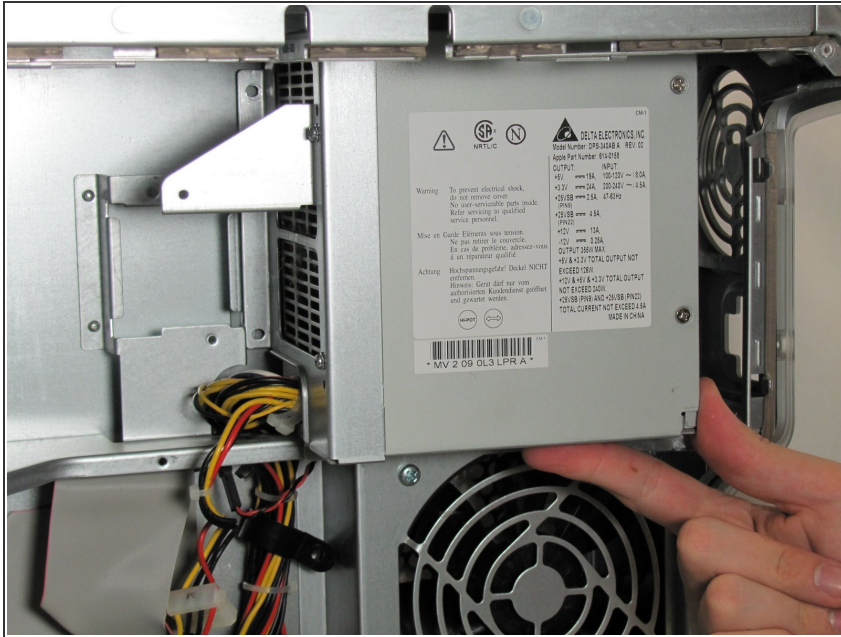
## Step 16



- Disconnect the power supply cables from the motherboard by pressing in the tab on the back of the connector as shown.



## Step 17



- Before sliding out the power supply make sure to disconnect the cable to the big fan by pressing in the small black tab on the back of the black connector!
- Slide the power supply away from the back of the computer and pull it out carefully stringing the cables through the hole in the metal support.

## Step 18



- Your power supply is now free from the enclosure and is ready to be replaced.

To reassemble your device, follow these instructions in reverse order.