



Power Mac G5 Graphics Card Replacement

Written By: Salvador Aguilar



INTRODUCTION

These next steps will guide you to correctly installing the graphics card in your computer.



TOOLS:

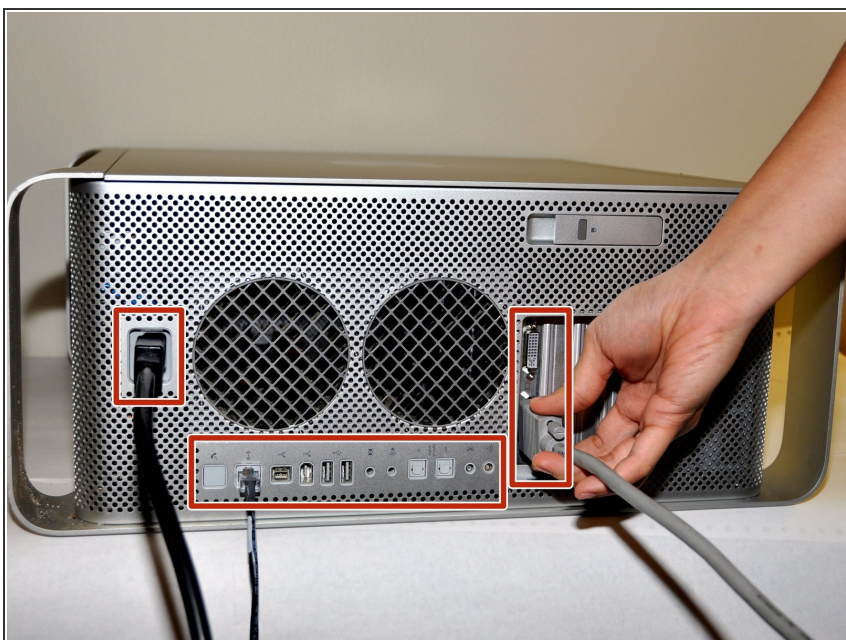
- [Phillips #1 Screwdriver](#) (1)
-

Step 1 — Side Panel



- ⚠ To avoid electrocution, shut down the computer. Do not open the computer or attempt to install any items inside it while the computer is on.
- ⚠ To avoid being burned, wait at least 10 minutes to allow the computer's internal components to cool.

Step 2



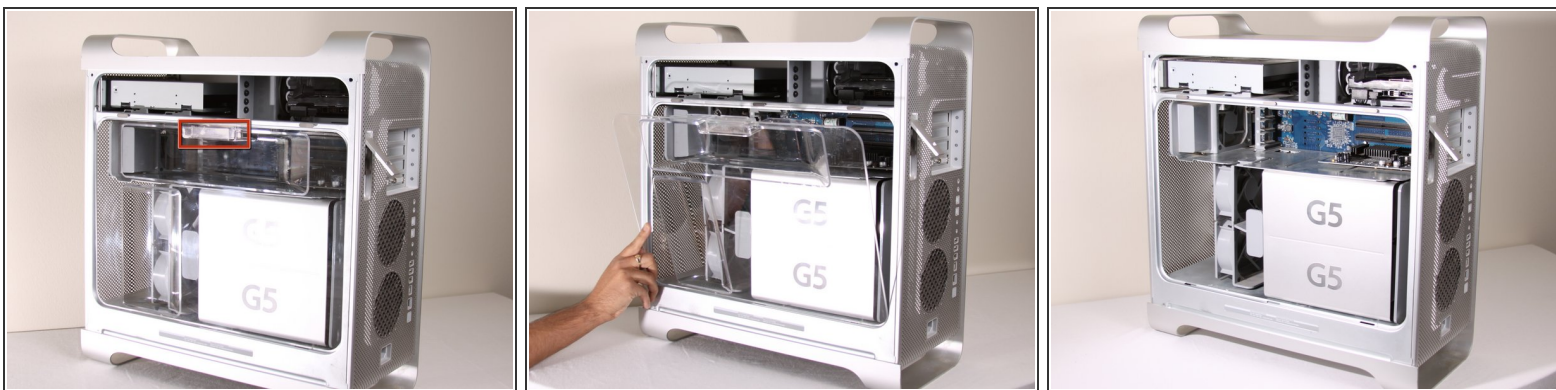
- Remove all the cables, including the power cables before opening the unit.

Step 3



- Lift the tab to unlock the side panel.
- ⓘ The panel should fall out. If the panel does not fall out by itself pull a little from the edges.

Step 4



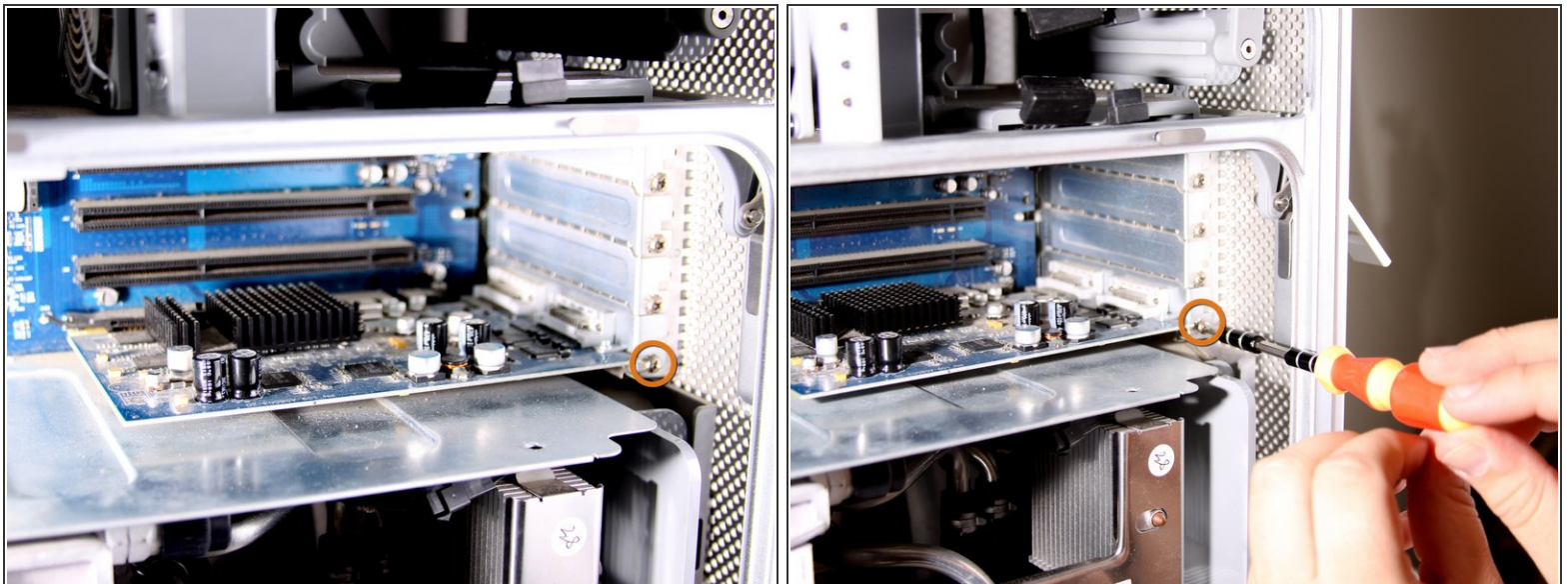
- Remove the air deflector (the clear plastic cover) by pulling on the handle.

Step 5 — Graphics Card



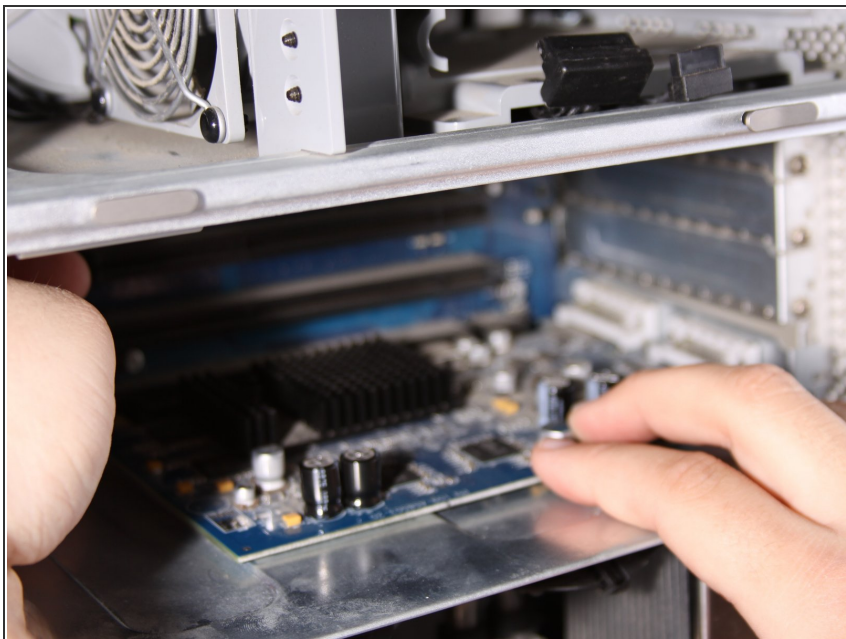
- Locate the graphics card in the desktop.

Step 6



- Using a Phillips # 1 screw driver, unscrew the screw right next to the graphics card.

Step 7



- Last thing to do is to gently shake the card out of its slot by pulling it straight out. (If the card does not come out easily, don't force it. You need to release a latch on the logic board behind the AGP connector while pulling out the video card.)

To reassemble your device, follow these instructions in reverse order.