



Power Macintosh 8600(250) Teardown

The Power Mac 8600/250 built from September 1997 to December 1997 (very short!). It features a 250 MHz PowerPC 604e processor, 32 MB of RAM, a 4.0 GB hard drive, an internal Zip drive, graphics acceleration, and built-in 24-bit composite and S-video.

Written By: Plague



INTRODUCTION

Going to take apart my Power Mac 8600/250!

Tools:

#1 Phillips screwdriver

Spudger/Flathead screwdriver

Your hands!



TOOLS:

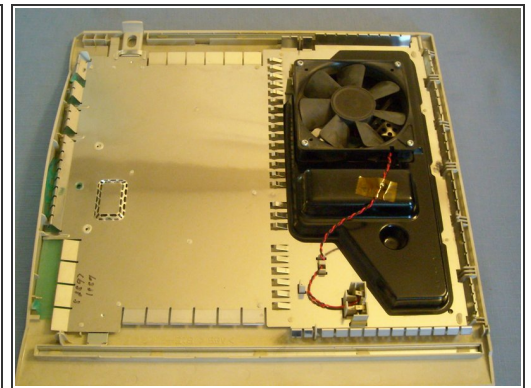
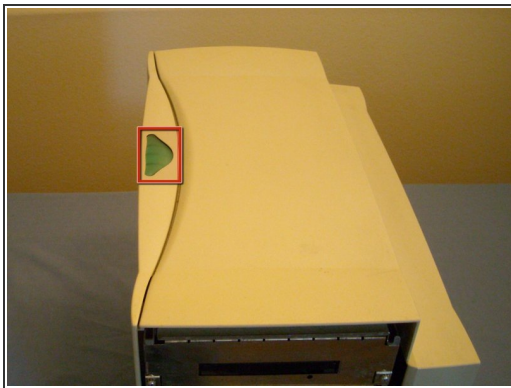
- [Phillips #0 Screwdriver](#) (1)
 - [Spudger](#) (1)
-

Step 1 — Power Macintosh 8600(250) Teardown



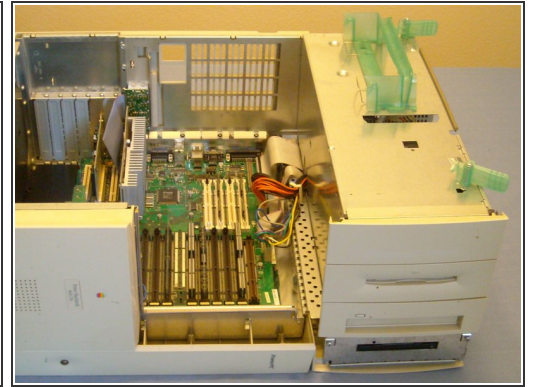
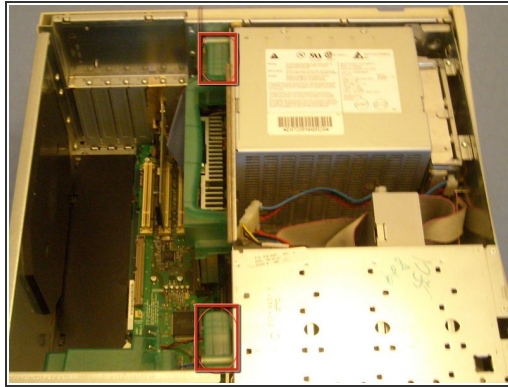
- There she is! i'm missing the bezel around the floppy drive :(

Step 2



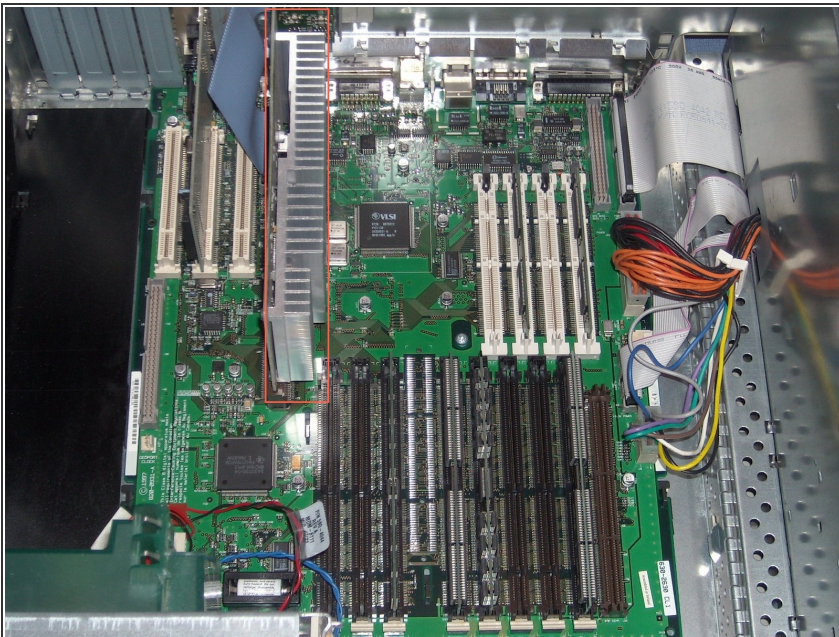
- Start by pressing the big green button. And pulling the door away and up from the computer.
- And on the Back of the door is the fan.

Step 3



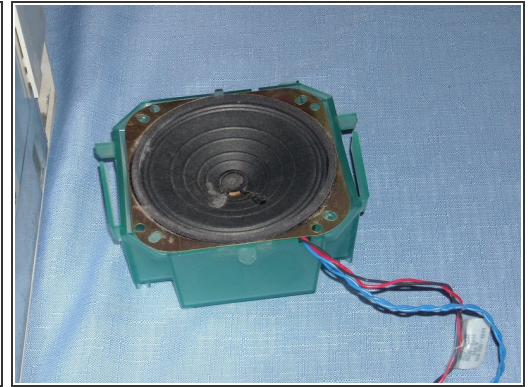
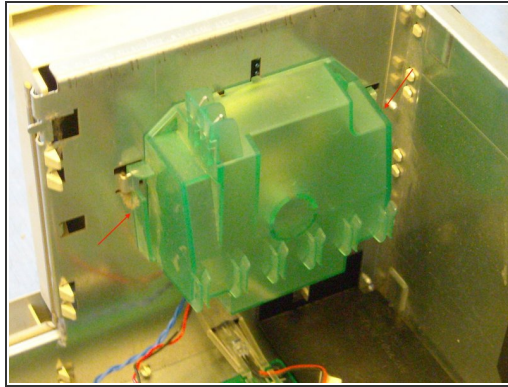
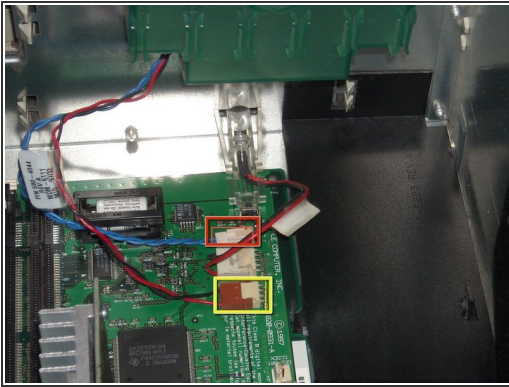
- Now it's best to lay the computer flat.
- And to flip up the tabs, grab the handle and open.

Step 4



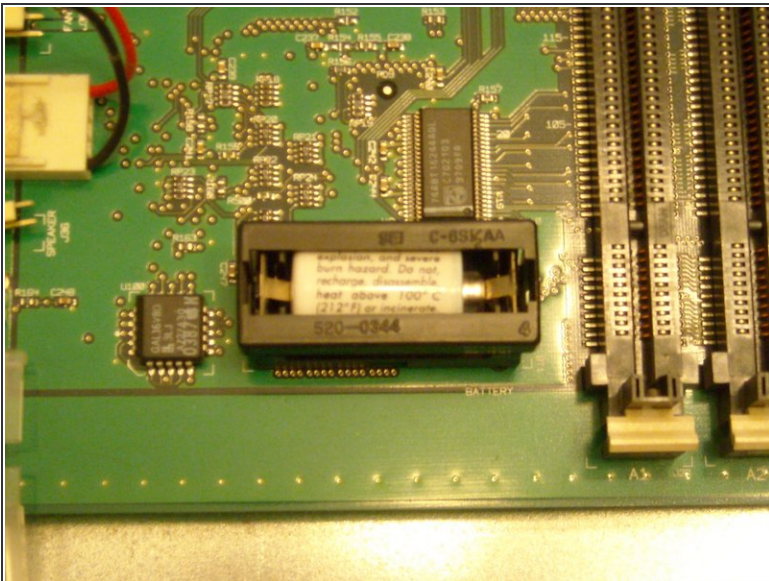
- The innards, motherboard, daughter board, RAM and so fourth.

Step 5



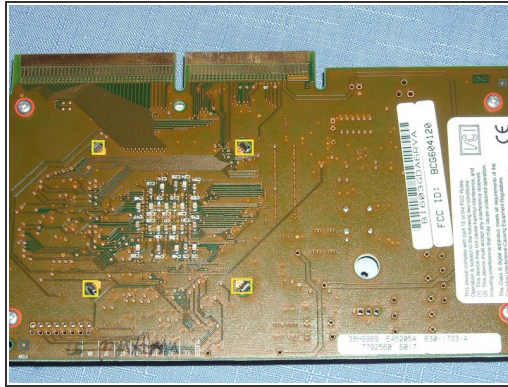
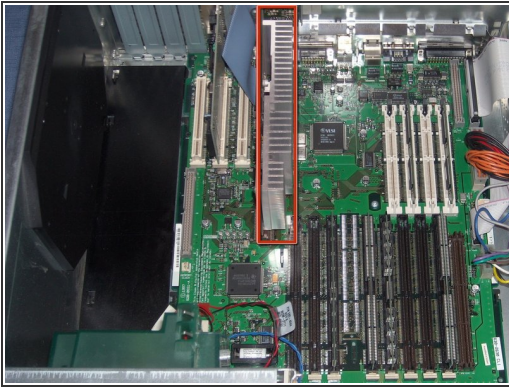
- Now the speaker
- Remove the speaker wires
- And the fan wires from the motherboard
- Push in the two plastic tabs on either side and lift the speaker up and out.

Step 6



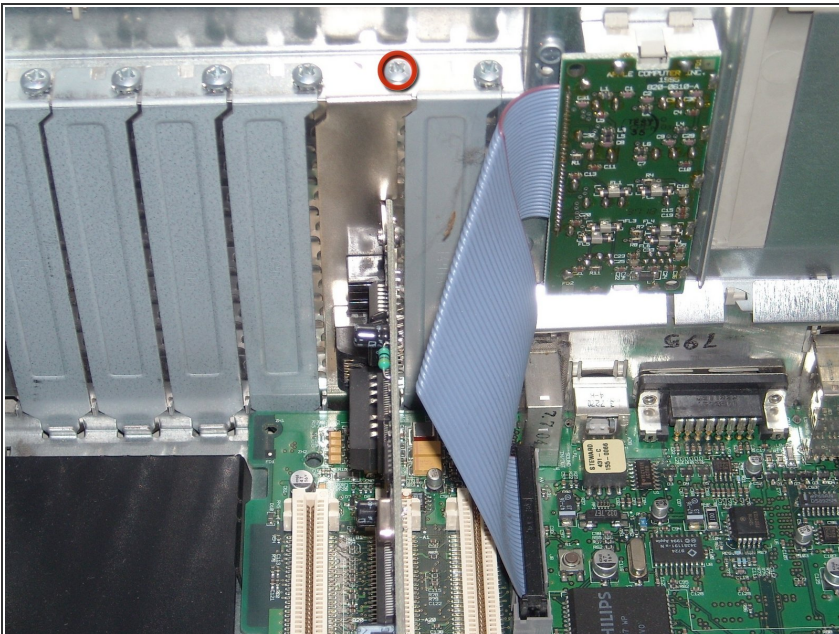
- The PRAM battery!
- Remove the housing by pulling it out and then take the battery out.

Step 7



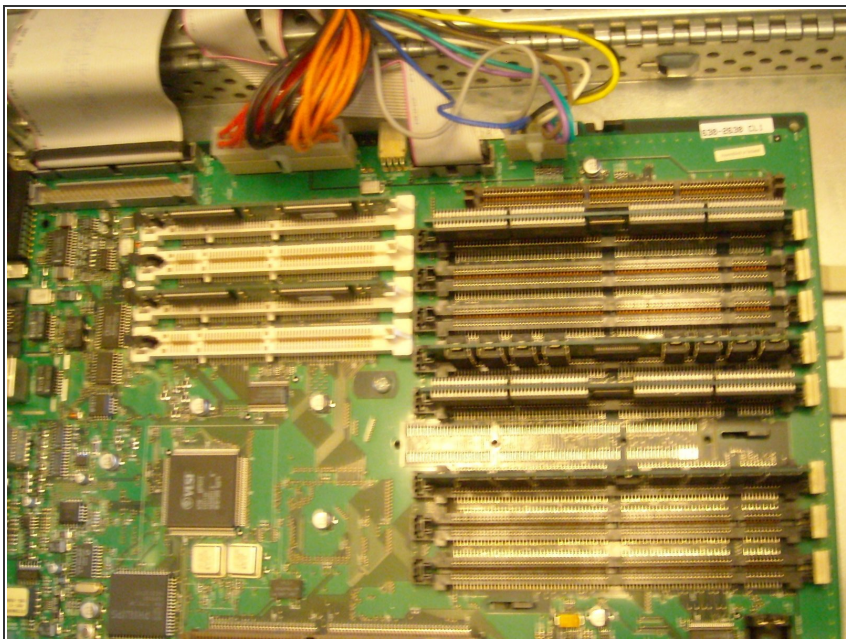
- The processor, firmly grasp and pull out.
- Remove the 4 #1 Phillips screws
- And push the 4 tabs off of the board

Step 8



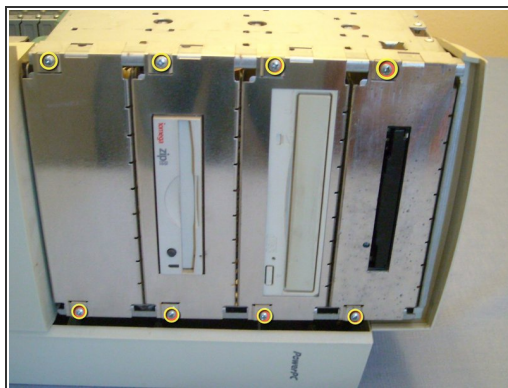
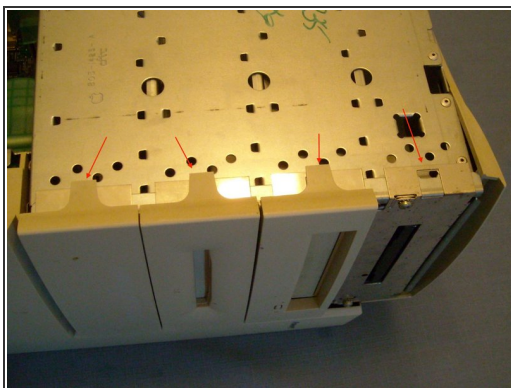
- Any video card or usb card, mine happens to be an ethernet 10/100 card.
- Unfortunately there are 6 spaces but only 3 slots on the motherboard :(
- Remove the #1 Phillips screw and pull the card out.

Step 9



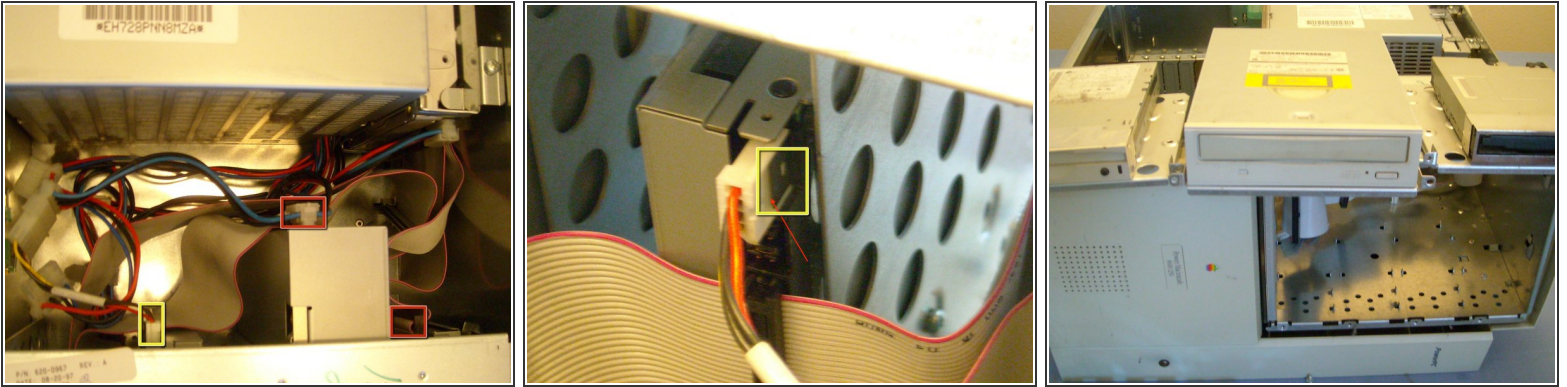
- RAM and VRAM slots!

Step 10



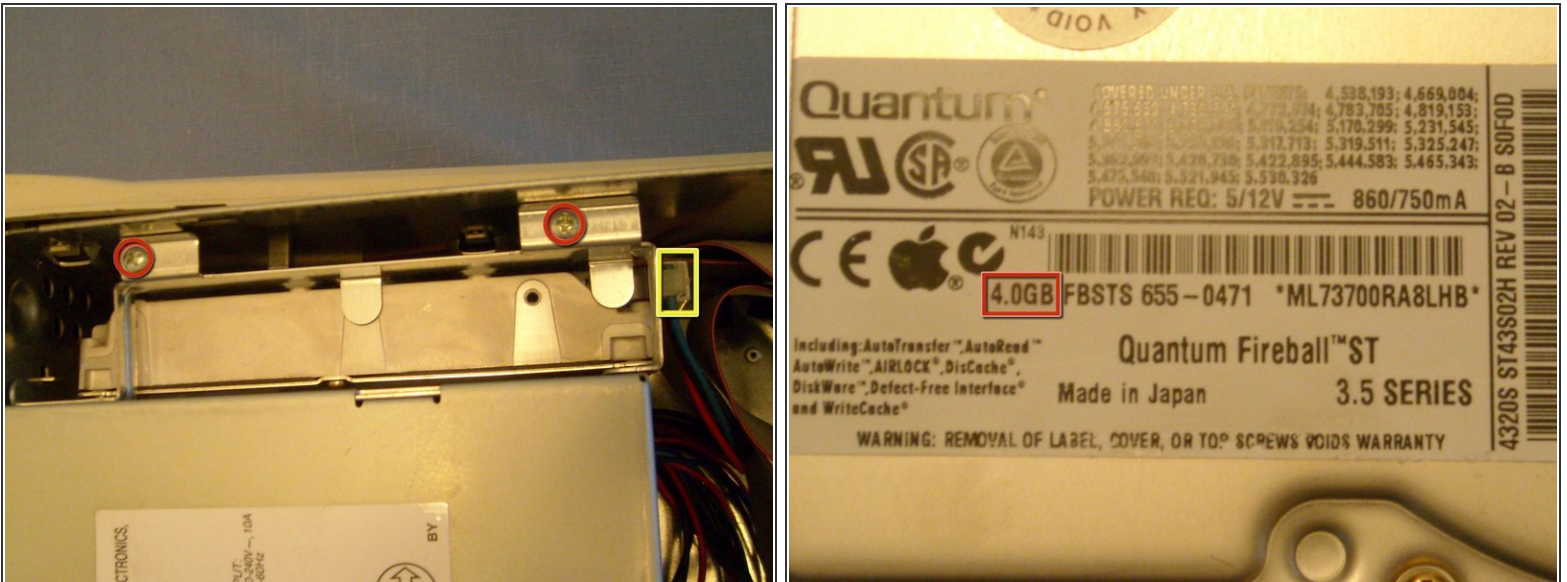
- Moving on to the CD, ZIP, and Floppy drives (best to close computer now)
- Remove the bezels and if I had the top one remove that too.
- Remove the 6 phillips screws and pull the metal frames out.

Step 11



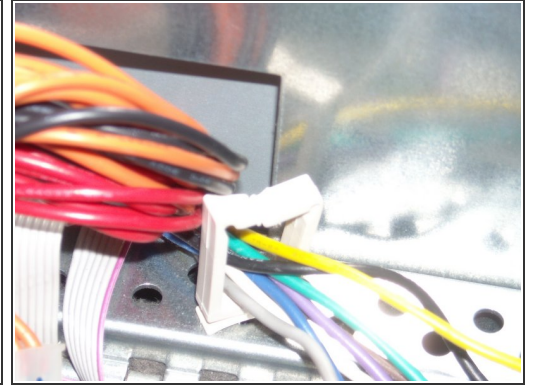
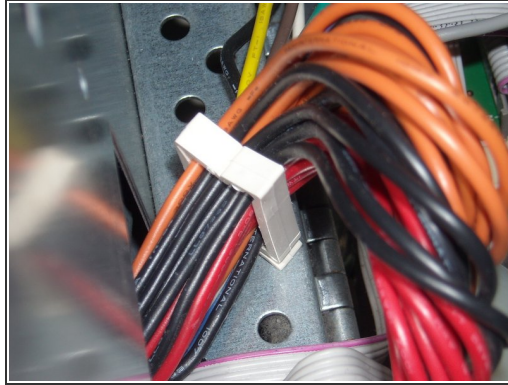
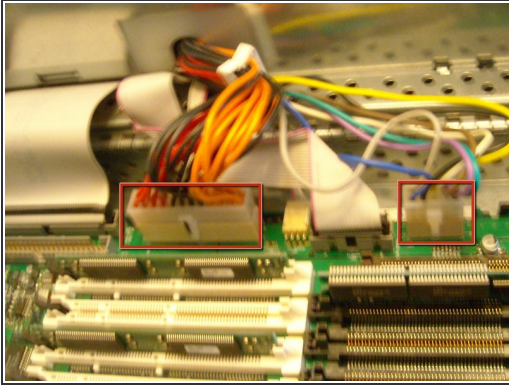
- Remove the data and power cables
- Pay special attention to this one, it has a clip on it, it helps to use a flathead or a spudger.
- Pull the drives out of the bay.

Step 12



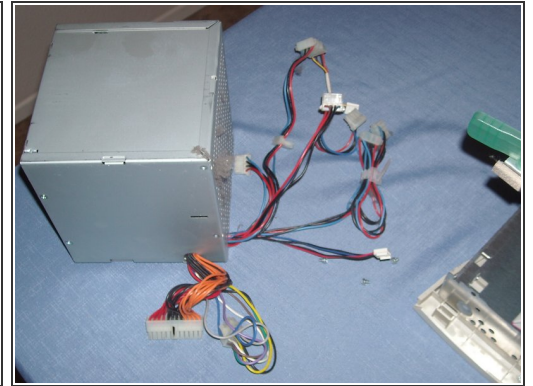
- Now the hard drive.
- Remove the two phillips screws
- And the data and power cables (might help to remove them as you pull the drive out)

Step 13



- The power source
- Remove the two connectors
- There is a clip holding the wires in place. Separate and remove the wires. (both sets)

Step 14



- Now remove the 4 phillips screws (it's best to start with the bottom two)
- And pull it out while de-threading the wires.

To reassemble your device, follow these instructions in reverse order.