



Power Removal

This is a guide that will be a prerequisite for other Insignia Flex 11.6 guides that deal with electrical connectors.

Written By: Connor Sweeney



INTRODUCTION

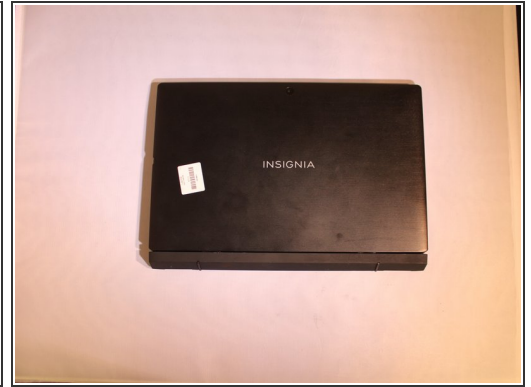
In order for you to remove components with power supplied to them, you need to remove the power from the device by disconnecting from the main power source.




TOOLS:

- [Plastic Cards](#) (1)
 - [Philips Head Screwdriver: Size J1](#) (1)
 - [iFixit Opening Tools](#) (1)
-

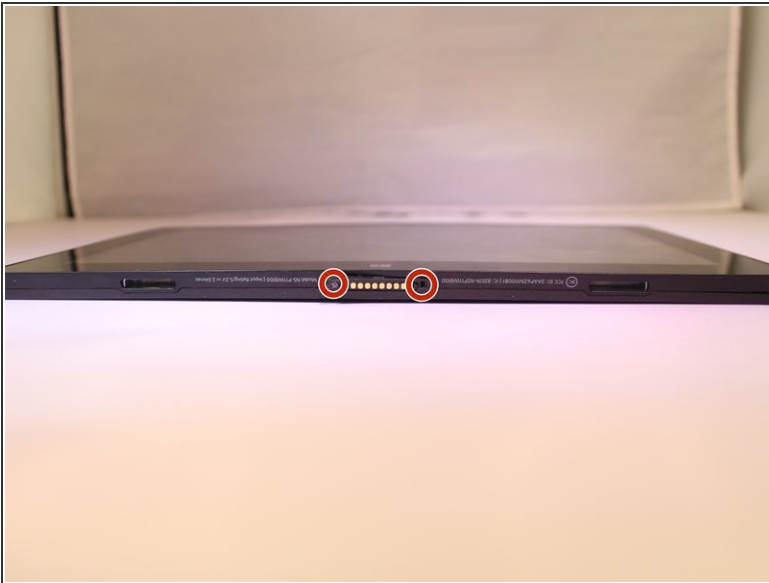
Step 1 — Power Removal




 Before working on the device, make sure the device is off and not plugged into any power source for safety reasons. Failure to comply could result in injury.

- Place the device on a firm surface with the device screen facing down.

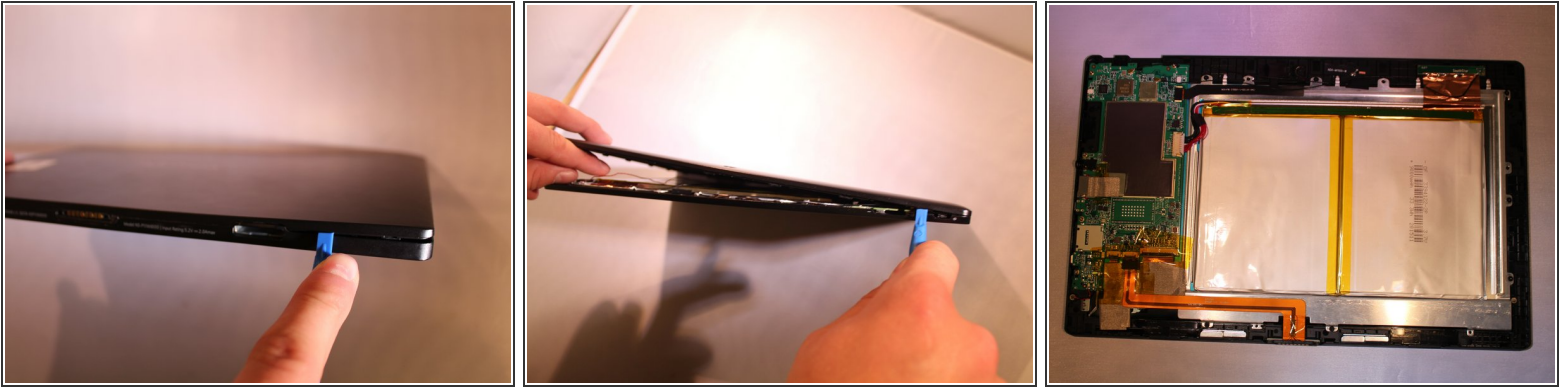
Step 2



- Remove 2, 6.1 mm Phillips J000 screws from the back of the device.

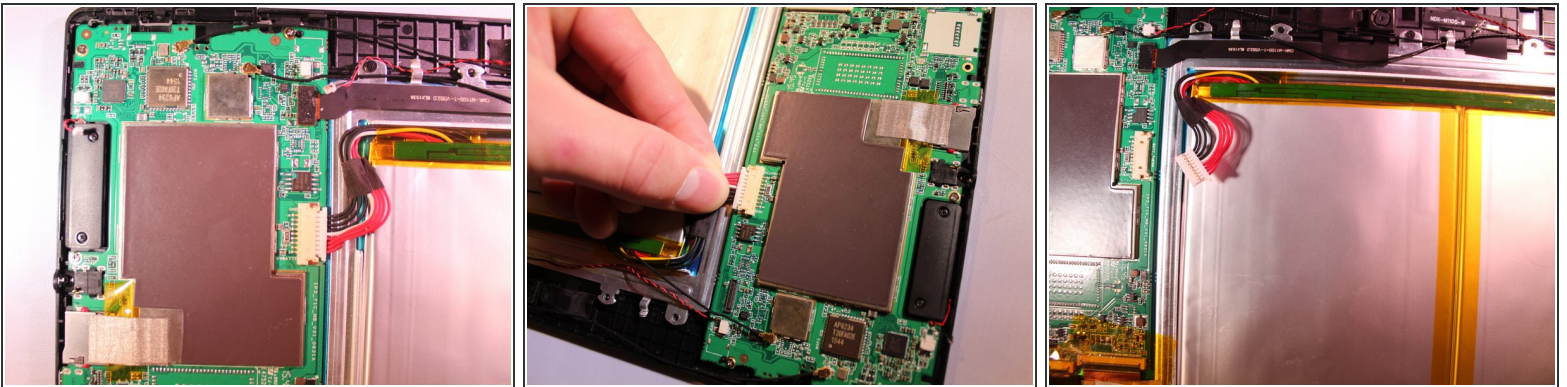
 If any screws are stripped, refer to the ifixit guide for how to remove a stripped screw. [How to Remove a Stripped Screw](#)

Step 3



- Using a plastic tool and the plastic card, gently pry off the back cover.

Step 4



- Using tweezers, remove the electrical connector that connects to the battery to remove the power to the battery.

To reassemble your device, follow these instructions in reverse order.