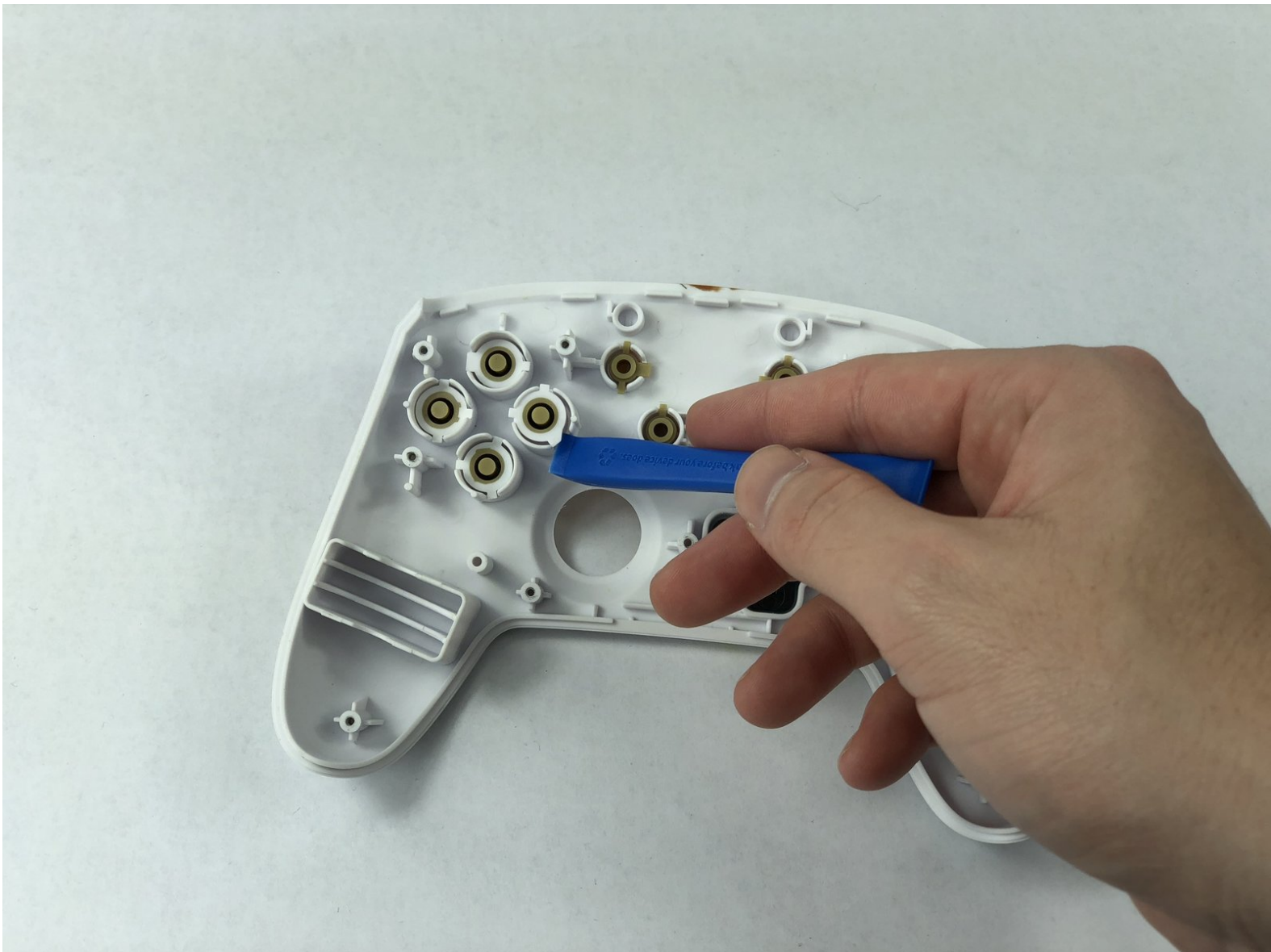




PowerA Enhanced Wireless Controller Action Buttons Replacement

This guide will show how to remove and replace the Action buttons of a PowerA Enhanced Wireless Controller.

Written By: Ayjah Montgomery



INTRODUCTION

This guide will show you how to access and remove the action buttons of your PowerA Enhanced Wireless Controller. If you need to clean any residue in between any buttons, this step will give you better access to do so.



TOOLS:

- [JIS Driver Set](#) (1)
 - [iFixit Opening Tools](#) (1)
-

Step 1 — Motherboard



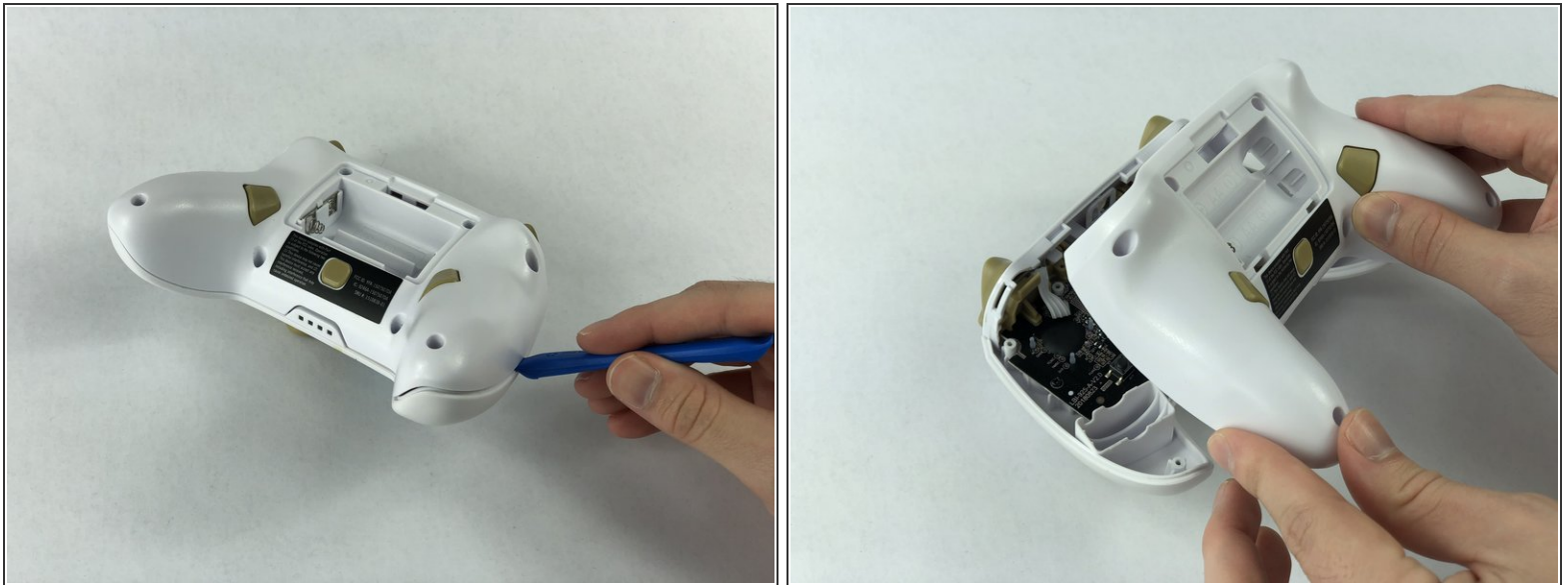
- Remove the battery cover by pressing down on the lever located on the top of the cover.
- Apply pressure until it clicks out of place, and pull it off.

Step 2



- Remove all eight screws using the J0 screwdriver.

Step 3



- Insert the iFixit opening tool into the seam and gently pry the cover plate up.
- Remove the cover plate once it is loosened.

Step 4



- Remove all three screws securing the motherboard using the J00 screwdriver.
- Remove the motherboard.

Step 5 — Action Buttons



- Use the iFixit opening tool to lift the action button out from its place.
- Pull the button out with your fingers.

To reassemble your device, follow these instructions in reverse order.