

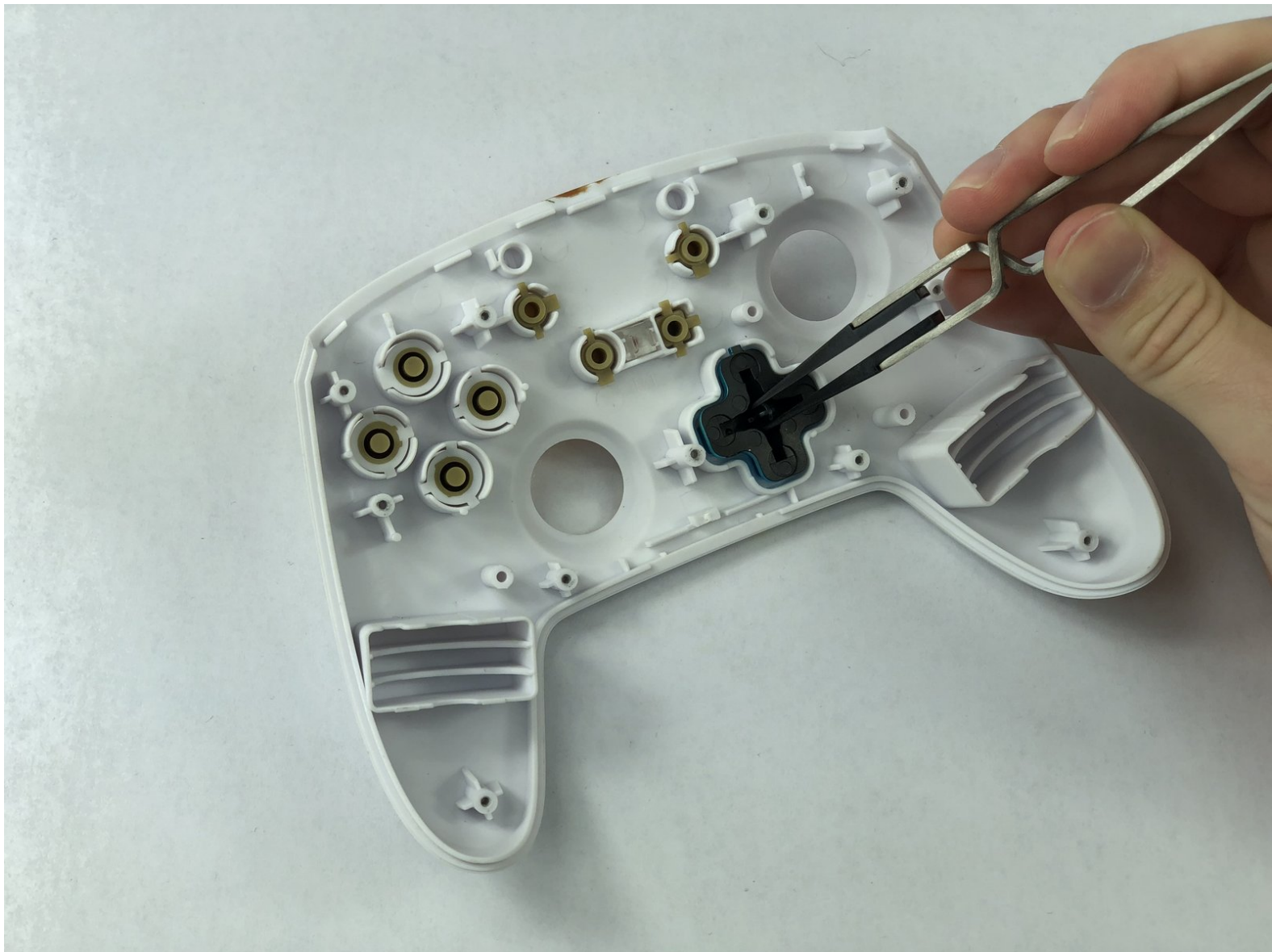


PowerA Enhanced Wireless Controller

Directional Pad Replacement

This guide will show how to remove and replace the Directional Pad of the PowerA Enhanced Wireless Controller.

Written By: Ayjah Montgomery



INTRODUCTION

This guide will show you how to access and replace the directional pad of your PowerA Enhanced Wireless Controller. If you need to clean any residue from the directional pad area, removing it will help you do so.



TOOLS:

- [JIS Driver Set](#) (1)
 - [iFixit Opening Tools](#) (1)
 - [Tweezers](#) (1)
-

Step 1 — Motherboard



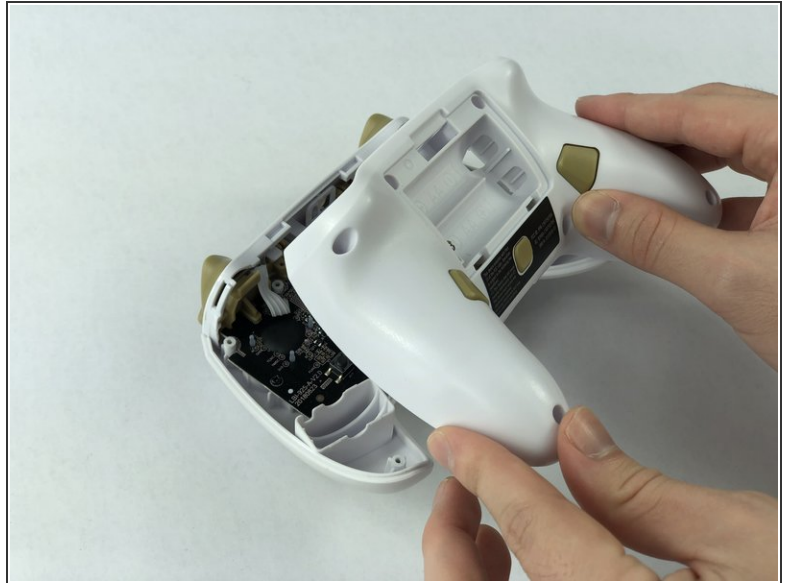
- Remove the battery cover by pressing down on the lever located on the top of the cover.
- Apply pressure until it clicks out of place, and pull it off.

Step 2



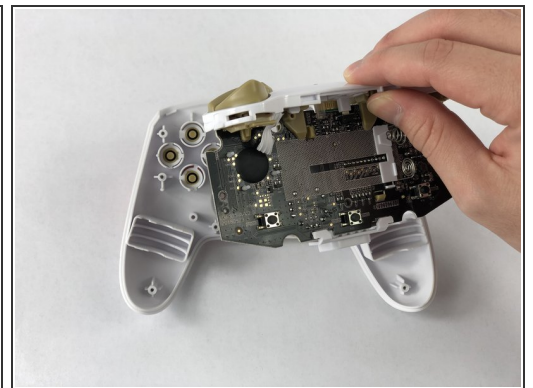
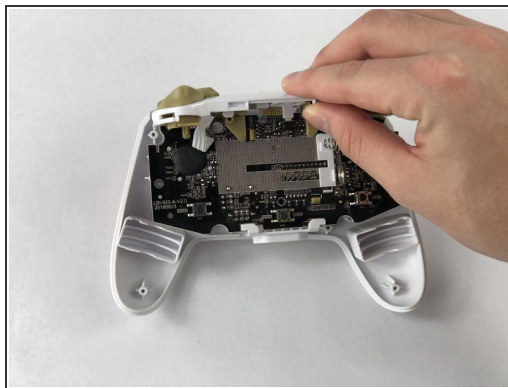
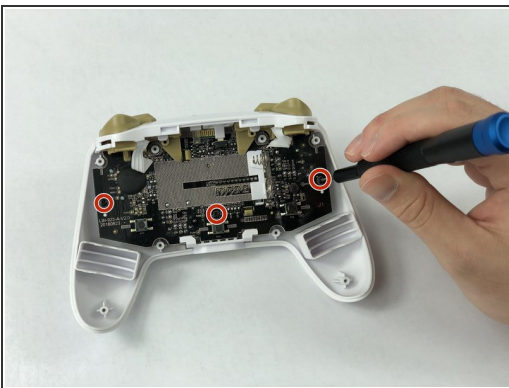
- Remove all eight screws using the J0 screwdriver.

Step 3



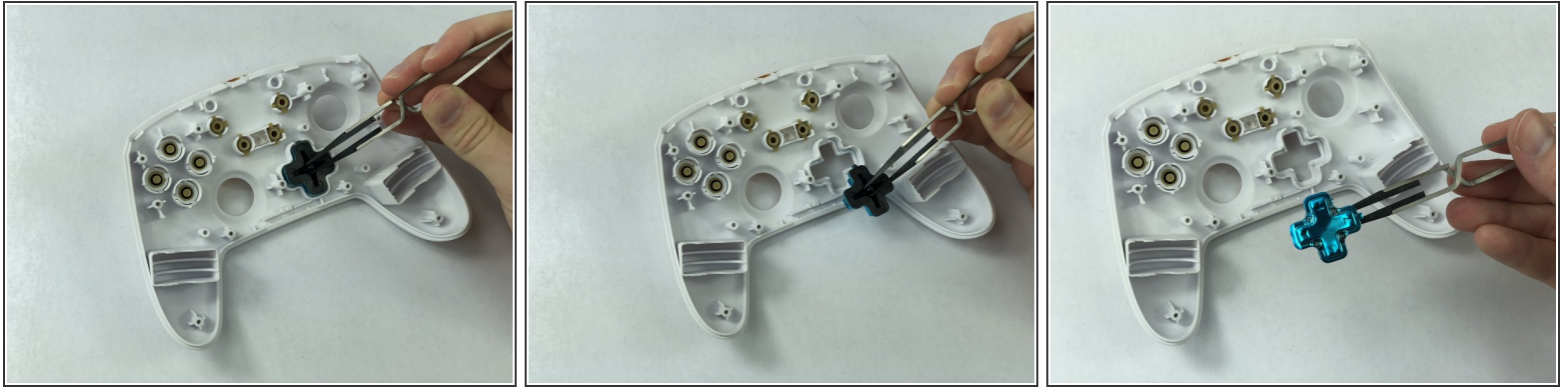
- Insert the iFixit opening tool into the seam and gently pry the cover plate up.
- Remove the cover plate once it is loosened.

Step 4



- Remove all three screws securing the motherboard using the J00 screwdriver.
- Remove the motherboard.

Step 5 — Directional Pad



- Use the rubber tweezers to grab the center of the directional pad and pull it out by pinching its center.

To reassemble your device, follow these instructions in reverse order.