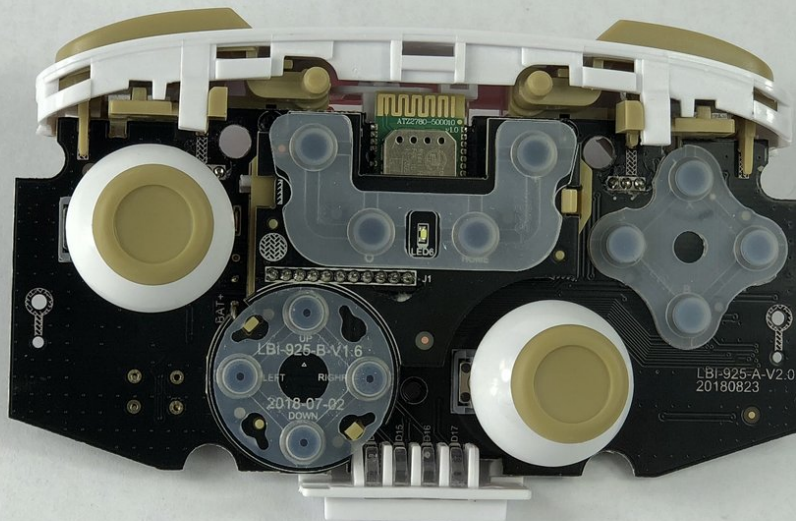




# PowerA Enhanced Wireless Controller L and R Sticks Replacement

This guide will show how to replace the L and R Sticks of the PowerA Enhanced Wireless Controller.

Written By: Ayjah Montgomery



---

## INTRODUCTION

This guide will show you how to access and replace the L and R sticks of your PowerA Enhanced Wireless Controller. If you need to clean any residue surrounding the sticks, pulling them off will help you do so.



### TOOLS:

- [JIS Driver Set](#) (1)
  - [iFixit Opening Tools](#) (1)
-

## Step 1 — Motherboard



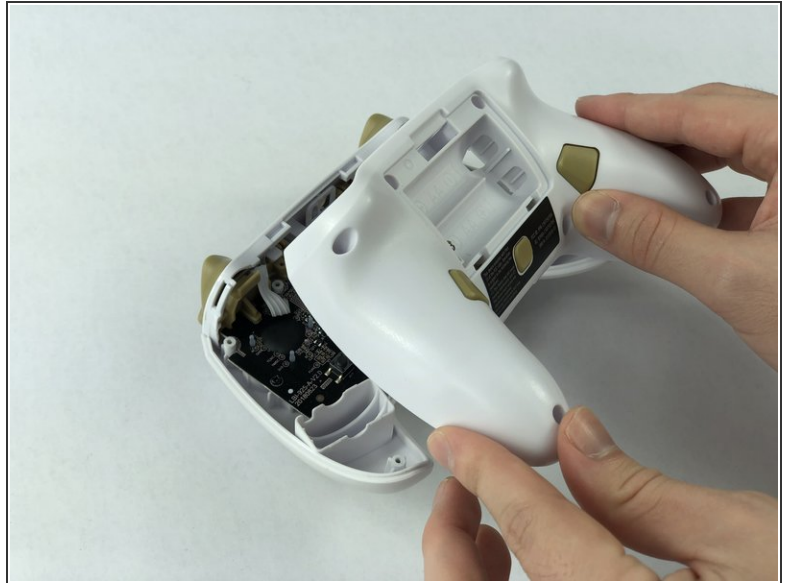
- Remove the battery cover by pressing down on the lever located on the top of the cover.
- Apply pressure until it clicks out of place, and pull it off.

## Step 2



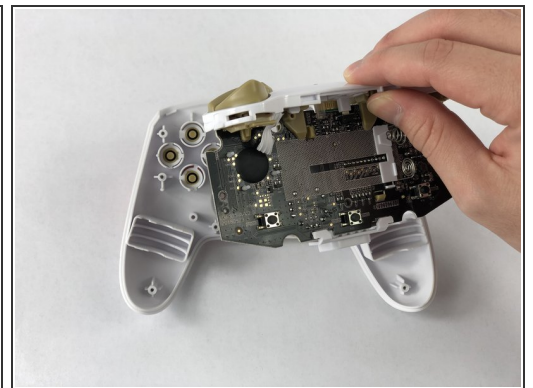
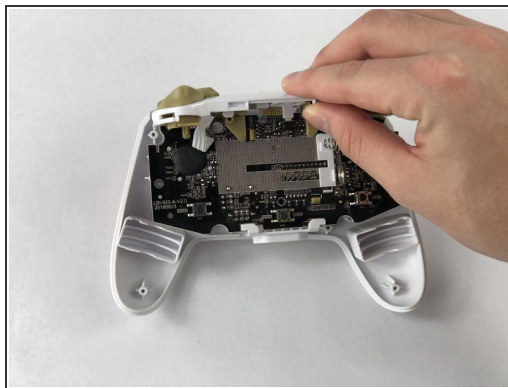
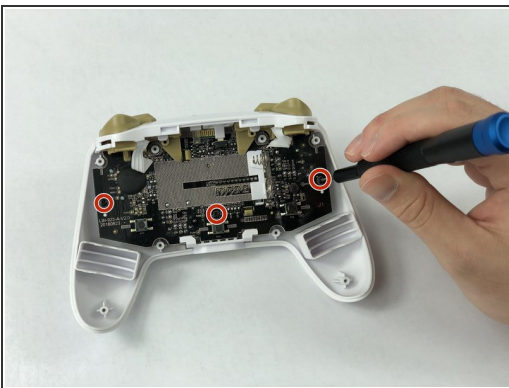
- Remove all eight screws using the J0 screwdriver.

### Step 3



- Insert the iFixit opening tool into the seam and gently pry the cover plate up.
- Remove the cover plate once it is loosened.

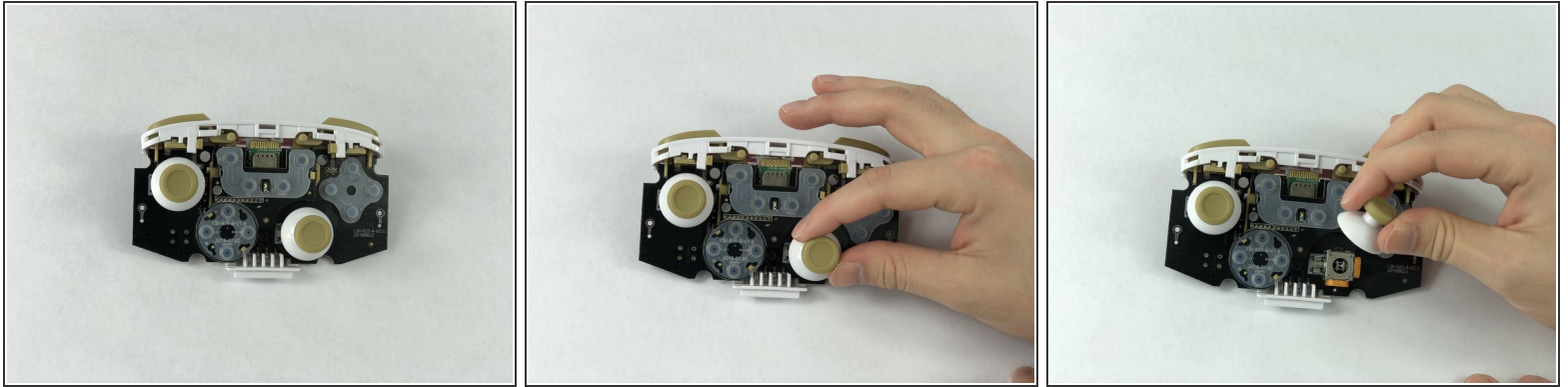
### Step 4



- Remove all three screws securing the motherboard using the J00 screwdriver.
- Remove the motherboard.



## Step 5 — L and R Sticks



- Pull the L and R sticks out of the socket.

To reassemble your device, follow these instructions in reverse order.