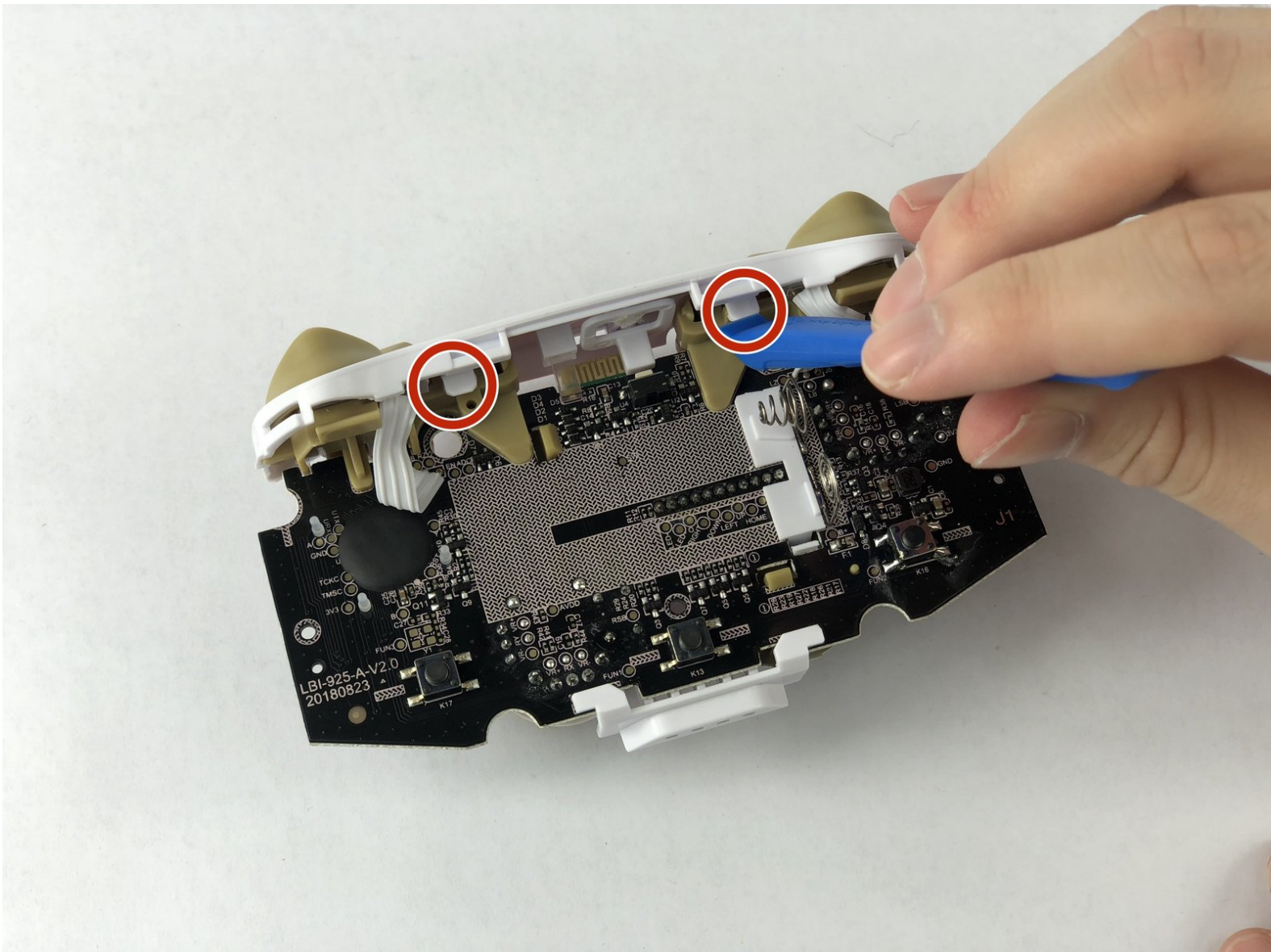




# PowerA Enhanced Wireless Controller L and R buttons Replacement

This guide will show how to remove and replace the L and R buttons of the PowerA Enhanced Wireless Controller.

Written By: Ayjah Montgomery



---

## INTRODUCTION

This guide will show you how to access and replace the L and R buttons of your PowerA Enhanced Wireless Controller. If you need to clean any residue from the L and R button area, removing them will help you do so.



### TOOLS:

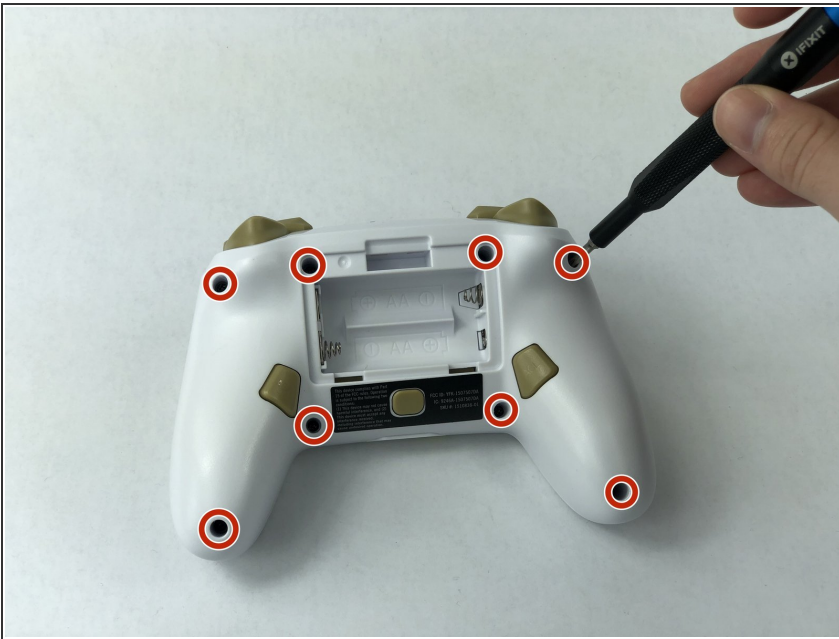
- [JIS Driver Set](#) (1)
  - [iFixit Opening Tools](#) (1)
  - [Tweezers](#) (1)
-

## Step 1 — Motherboard



- Remove the battery cover by pressing down on the lever located on the top of the cover.
- Apply pressure until it clicks out of place, and pull it off.

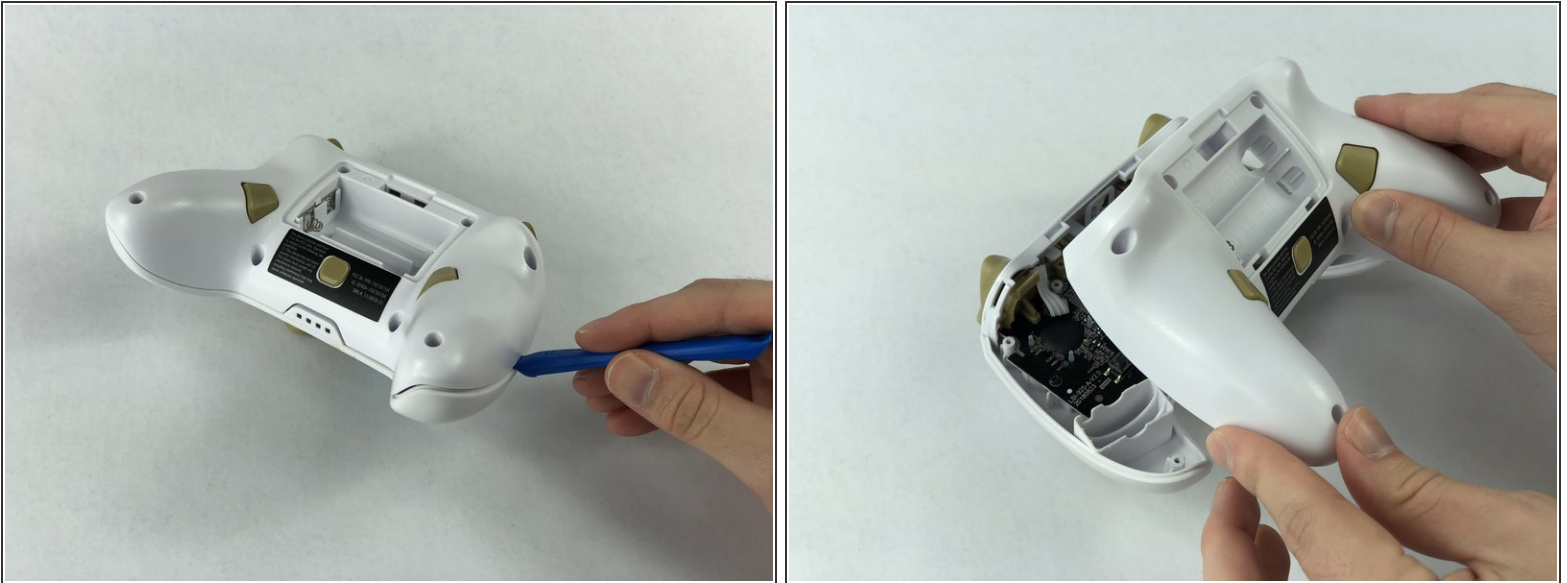
## Step 2



- Remove all eight screws using the J0 screwdriver.



### Step 3



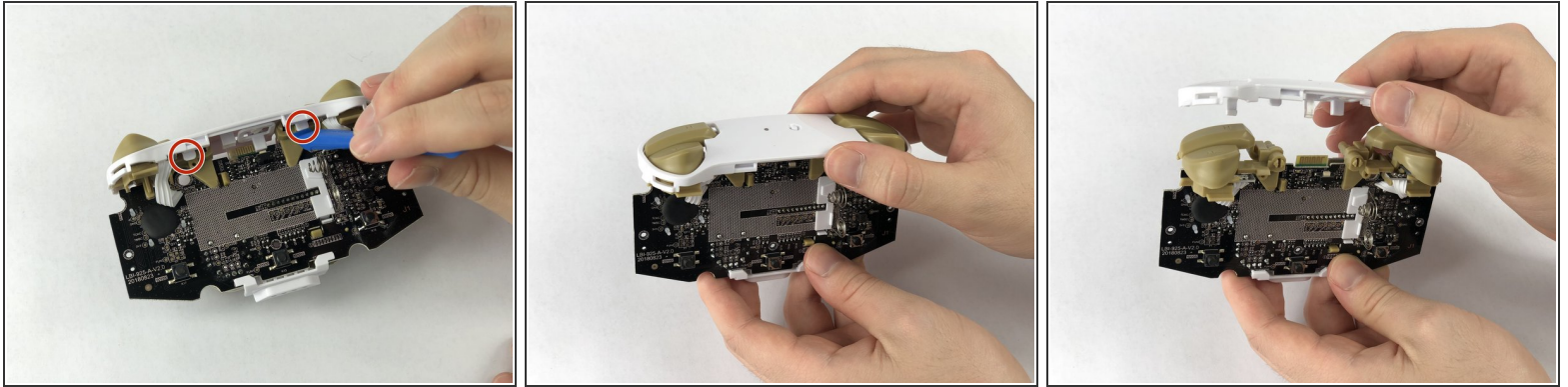
- Insert the iFixit opening tool into the seam and gently pry the cover plate up.
- Remove the cover plate once it is loosened.

### Step 4



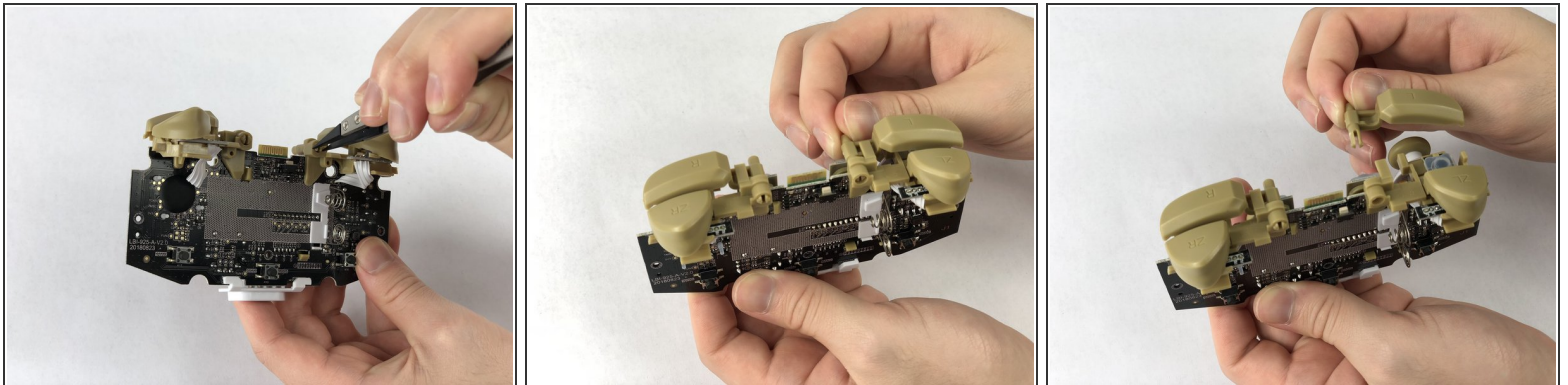
- Remove all three screws securing the motherboard using the J00 screwdriver.
- Remove the motherboard.

## Step 5 — L and R buttons



- Lift the two white latches using the iFixit opening tool.
- Lift the white covering off.

## Step 6



- Squeeze the buttons with rubber tweezers and push them in.
- Grab it from the back and pull it out.

To reassemble your device, follow these instructions in reverse order.