



# PowerA Enhanced Wireless Controller Motherboard Replacement

This guide will show how to take out and replace the PowerA Enhanced Wireless Controller's motherboard.

Written By: Alberto Del Calvo Lopez



---

## INTRODUCTION

This guide will show you how to access and replace the motherboard of your PowerA Enhanced Wireless Controller.

---



### TOOLS:

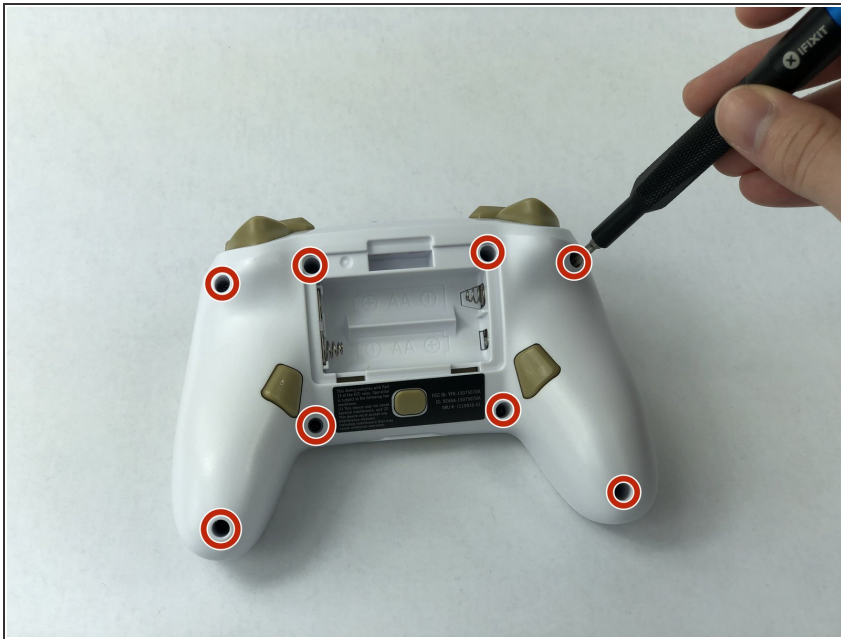
- [iFixit Opening Tools](#) (1)
  - [JIS Driver Set](#) (1)
-

## Step 1 — Motherboard



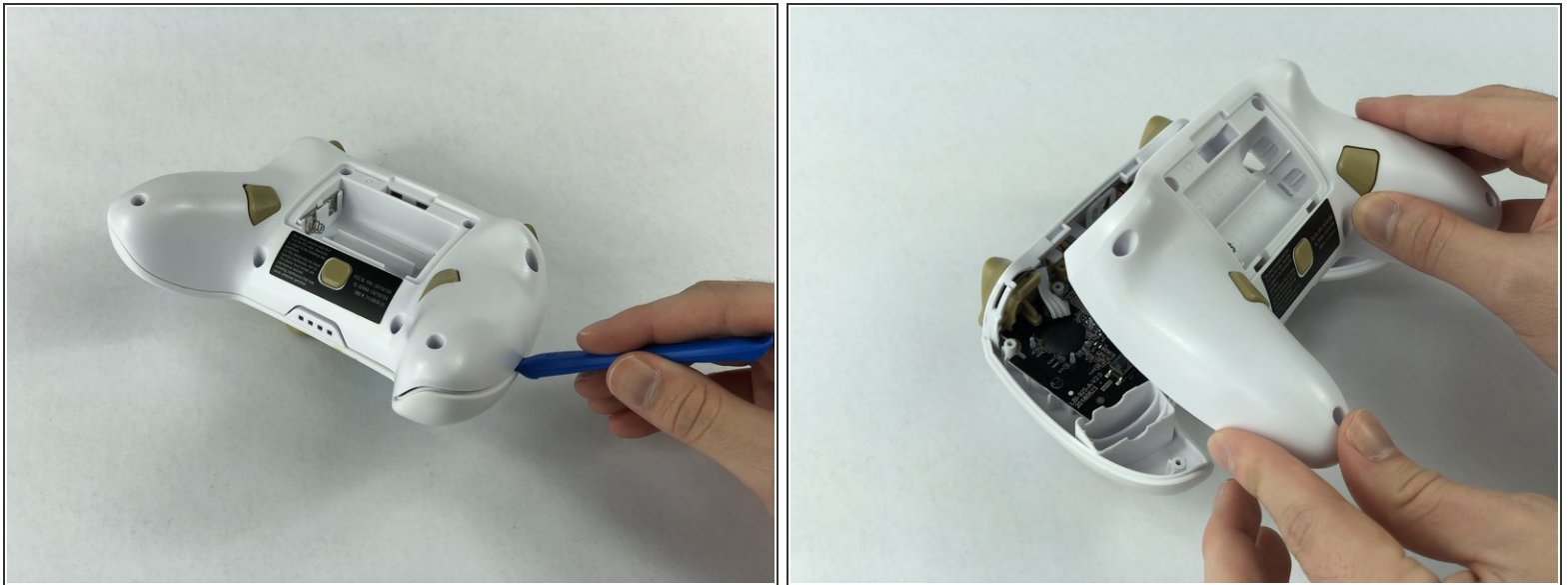
- Remove the battery cover by pressing down on the lever located on the top of the cover.
- Apply pressure until it clicks out of place, and pull it off.

## Step 2



- Remove all eight screws using the J0 screwdriver.

### Step 3



- Insert the iFixit opening tool into the seam and gently pry the cover plate up.
- Remove the cover plate once it is loosened.

### Step 4



- Remove all three screws securing the motherboard using the J00 screwdriver.
- Remove the motherboard.

To reassemble your device, follow these instructions in reverse order.