



PowerBook 180 Ram Replacement

Install new ram into the PowerBook 180.

Written By: Jack Byrnes



INTRODUCTION

The PowerBook 180 was one of Apple's top of the line notebook computers at around 1993. It was in high demand through all of its life, and had a selling price of about \$3900 base model. This computer can run System 7 - 8.1 (through Born Again) and has a 68030 processor running at 33mhz.



TOOLS:

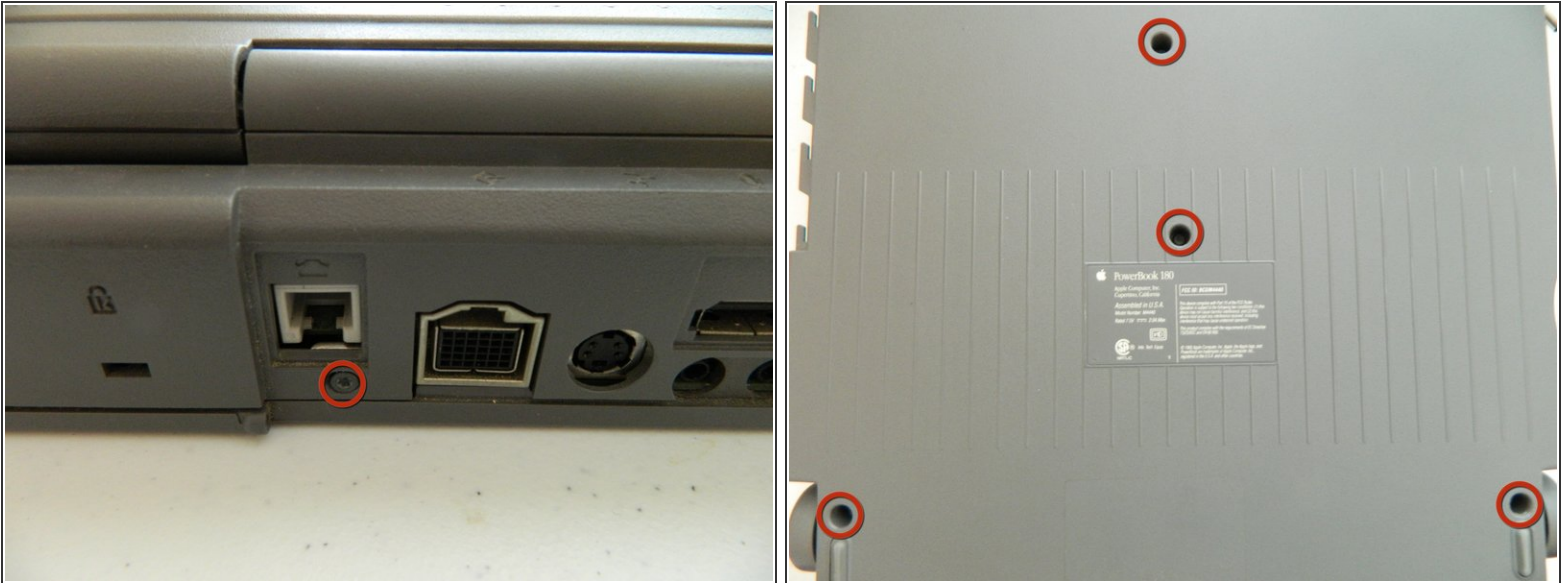
- [T8 Torx Screwdriver](#) (1)
-

Step 1 — Ram



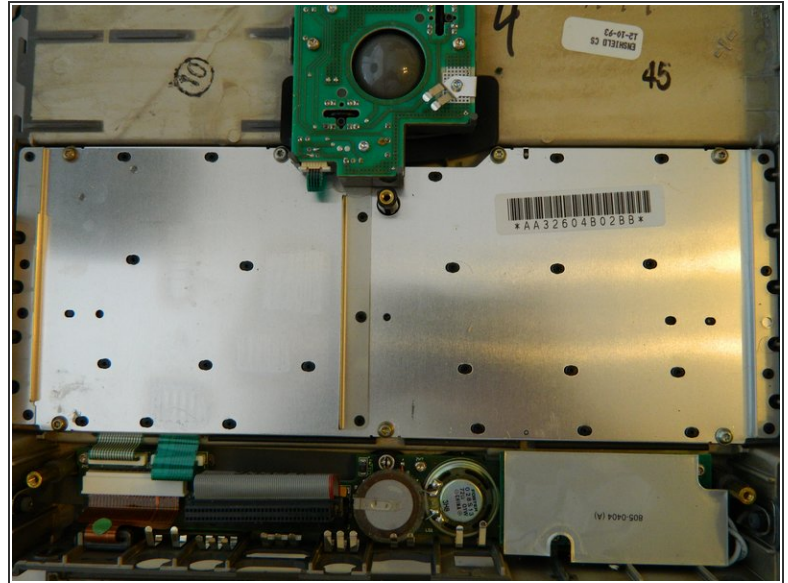
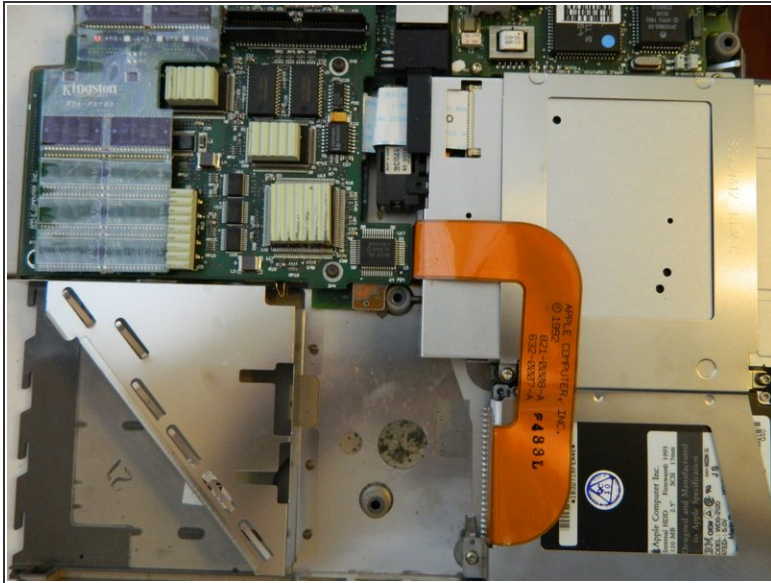
- The PowerBook 180 has a removable Ni-Cad battery on the side. Before we start this repair, we need to make sure the computer does not have any power source - so you don't get shocked and the computer doesn't die.
- Slide the battery door to the front of the computer, as directed by the arrows.
- Pull out the battery.

Step 2



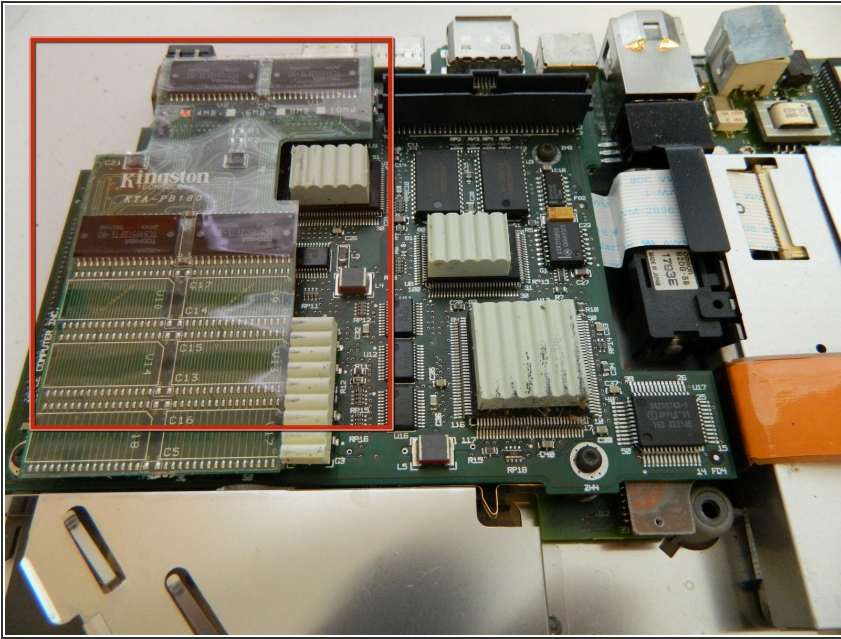
- There are 5 Torx T8 screws that hold the bottom of the PowerBook 180.
- 4 are on the side, and one is above the modem port at the back of the computer.
- Remove these screws.

Step 3



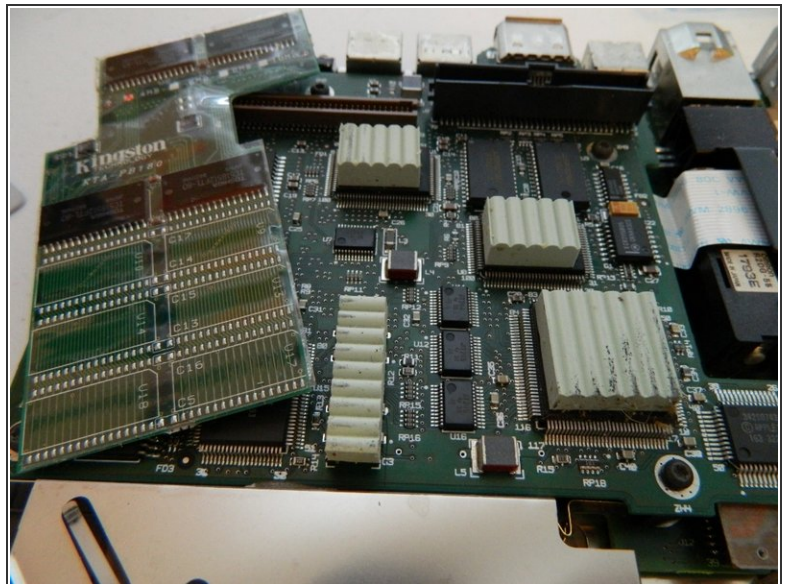
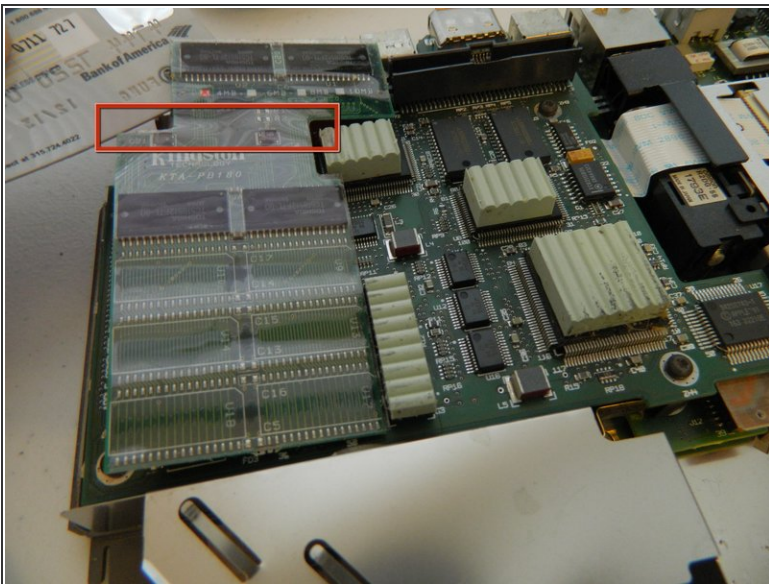
- Remove the bottom plate by prying up with either a flathead screwdriver or plastic object, such as a credit card.
- Keep in mind the bottom left and right corners of the PowerBook 180 is very hard to open - you may need to use some extra force to open that side.
- Your PowerBook 180 should look like the two pictures - with separate top and bottom halves.

Step 4



- Identify the RAM in the PowerBook 180. It is marked in red in the picture.
- For this PowerBook, there is 4mb of Kingston RAM - a lot back in those times!

Step 5



- Remove the RAM by using a plastic object (such as a credit card) along the red marked area in the picture. The RAM is very flexible, so be very careful.
- Now place the new RAM into the empty socket.
- Follow these instructions in reverse order to reassemble the PowerBook 180.

This document was generated on 2019-10-02 01:39:47 AM (MST).

To reassemble your device, follow these instructions in reverse order.