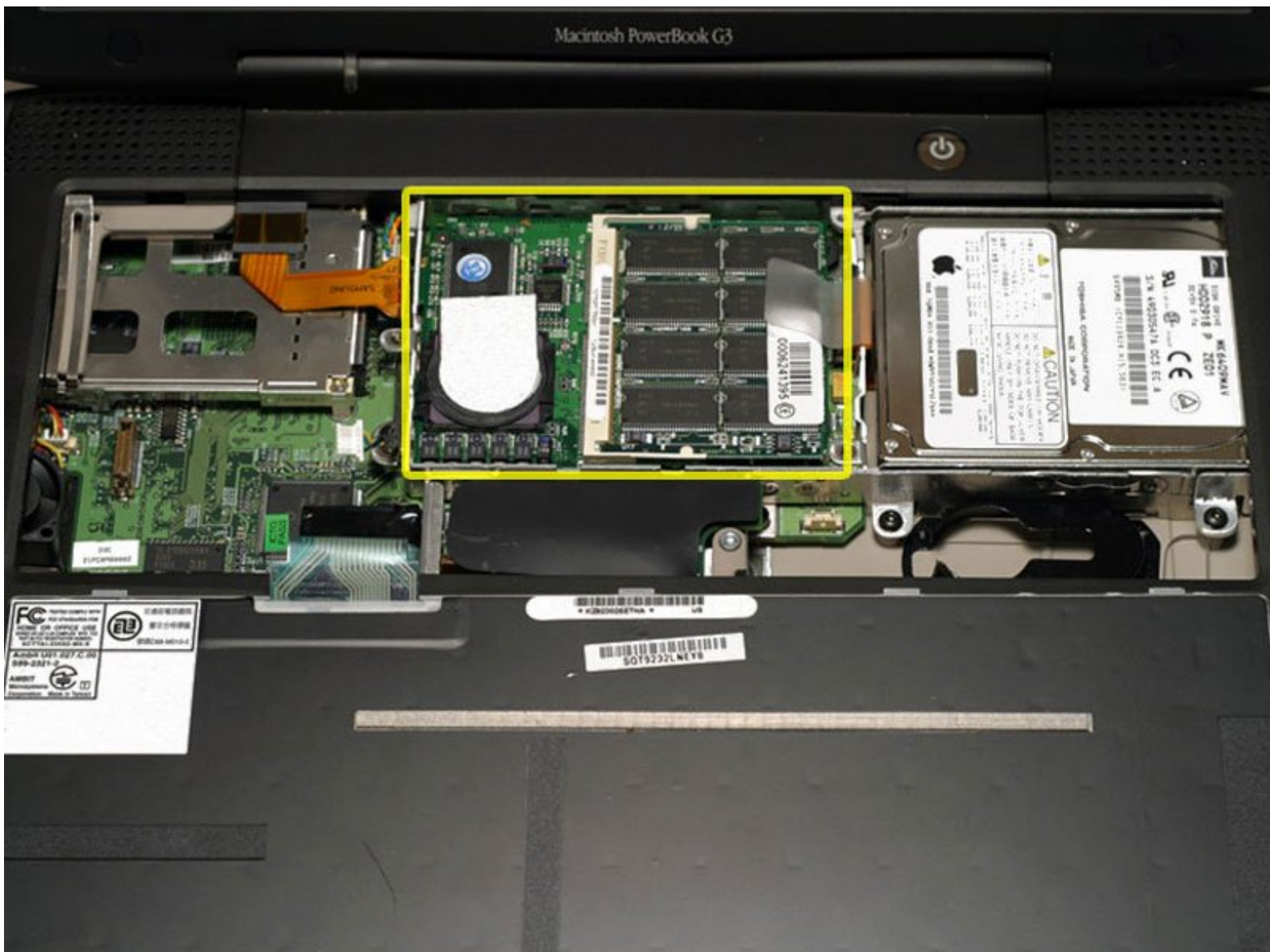




# PowerBook G3 Lombard Processor Replacement

Written By: iRobot



## INTRODUCTION

This processor board also includes L2 cache. It is not soldered to the logic board, so installing a replacement is very easy.



### TOOLS:

- [Anti-Static Wrist Strap](#) (1)
- [Phillips #0 Screwdriver](#) (1)
- [Spudger](#) (1)



### PARTS:

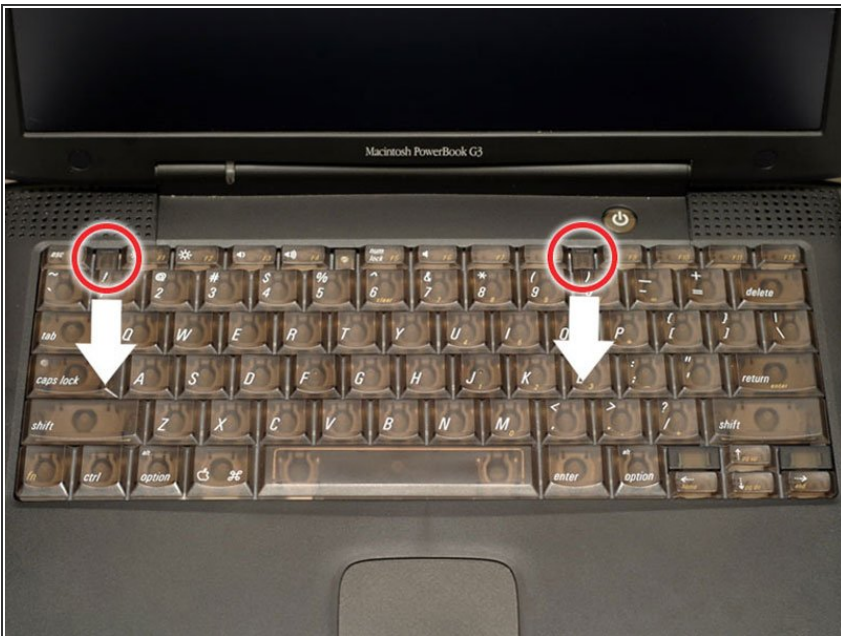
- [G3 Lombard 333 MHz Processor](#) (1)
- [G3 Lombard 400 MHz Processor](#) (1)

## Step 1 — Keyboard



- Turn the computer so that the ports are facing you.
- If the keyboard is locked, open the port cover and turn the keyboard locking screw until the keyboard is unlocked.

## Step 2



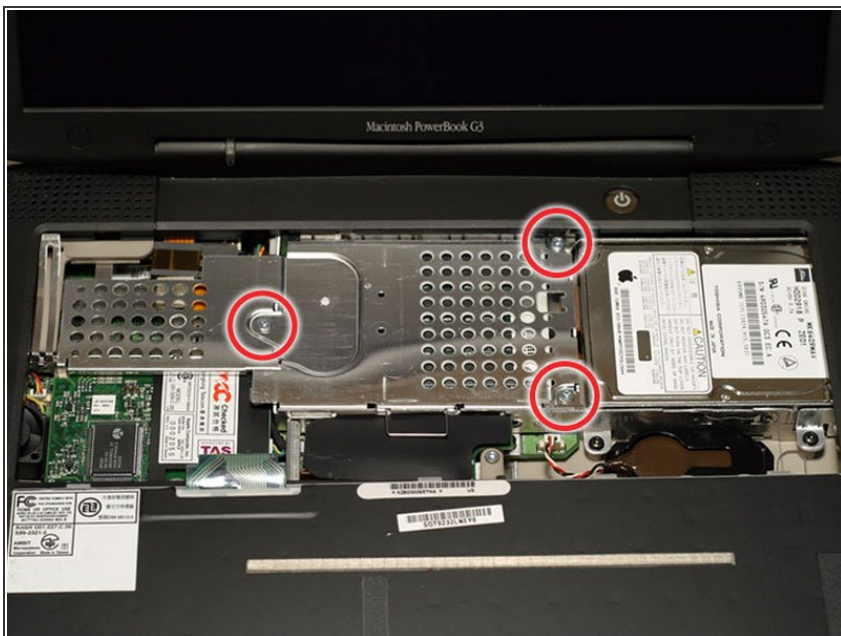
- Pull the keyboard release tabs toward you and lift up on the keyboard until it pops free.
- ⓘ Make sure you have removed the laptop battery and CD/DVD module from the expansion bays before proceeding.

## Step 3



- Lift the keyboard out by pulling it up and away from you. Rest the keyboard, face down, on top of the trackpad.
- ⓘ In order to replace the keyboard, you must first remove the modem.

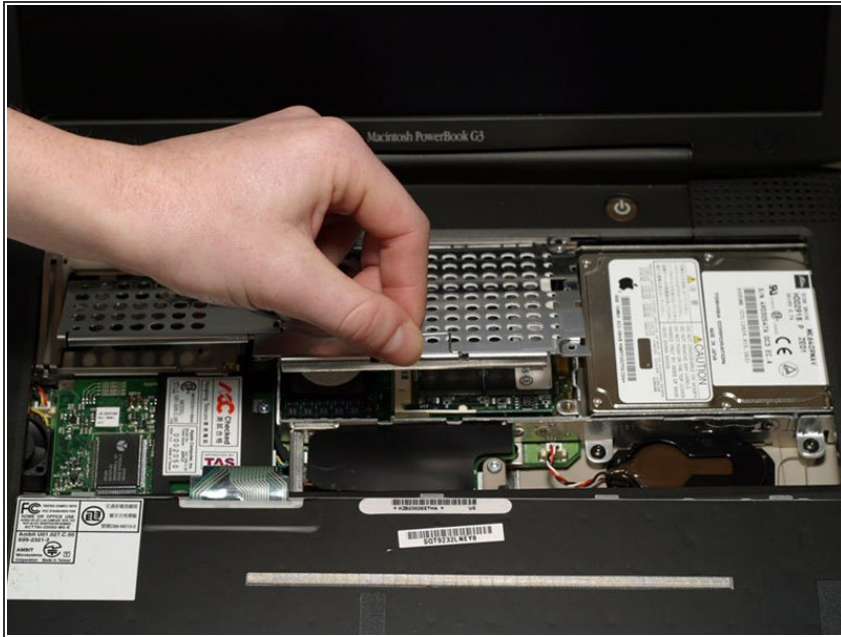
## Step 4 — Heat Shield



- Remove the three silver Phillips screws that attach the heat shield to the internal metal framework.



## Step 5



- Lift the heat shield up and pull it toward you.

## Step 6



- Your laptop should look approximately like this.

## Step 7 — PRAM Battery



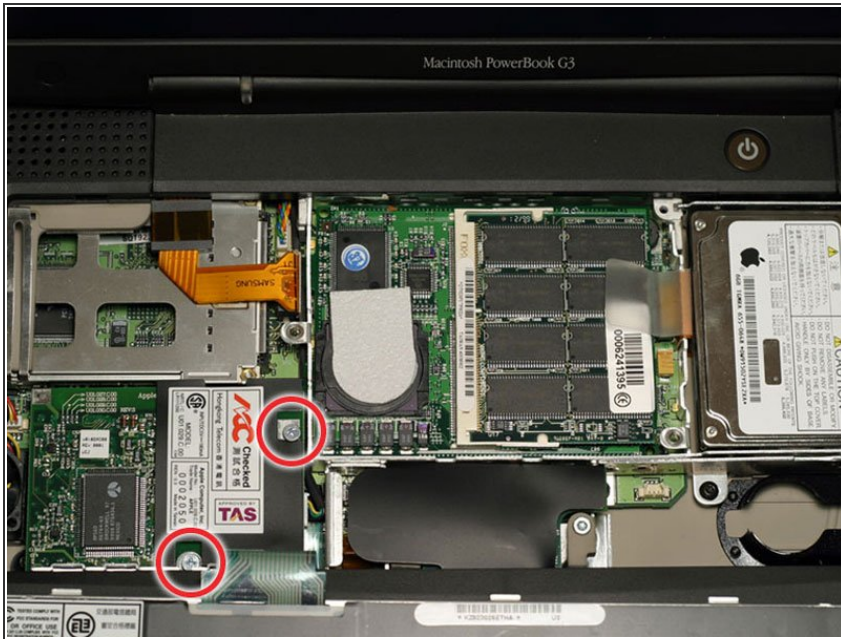
- Pull the battery cable directly up from the logic board.

## Step 8



- Remove the battery from its holder by pulling up and to the left.

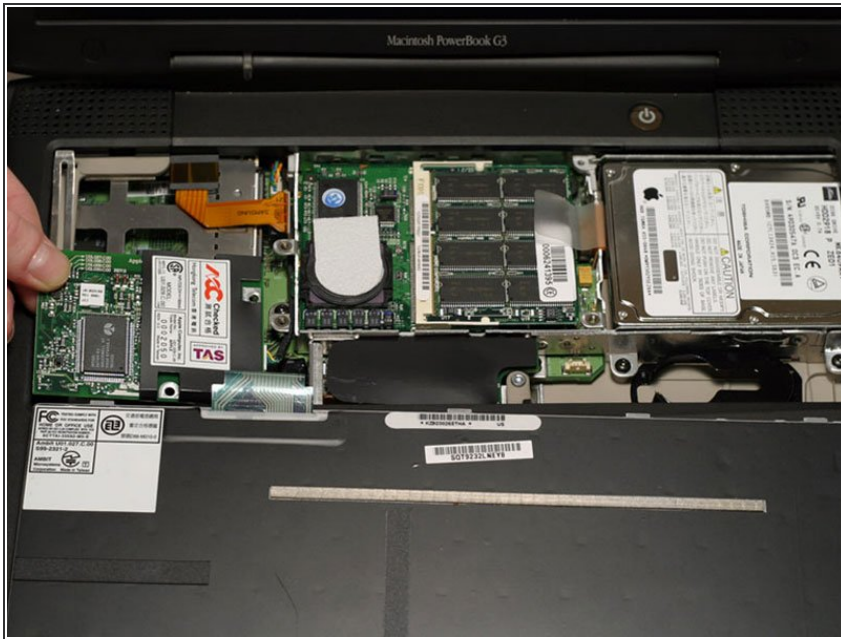
## Step 9 — Modem



- Remove the two silver Phillips screws from the modem.

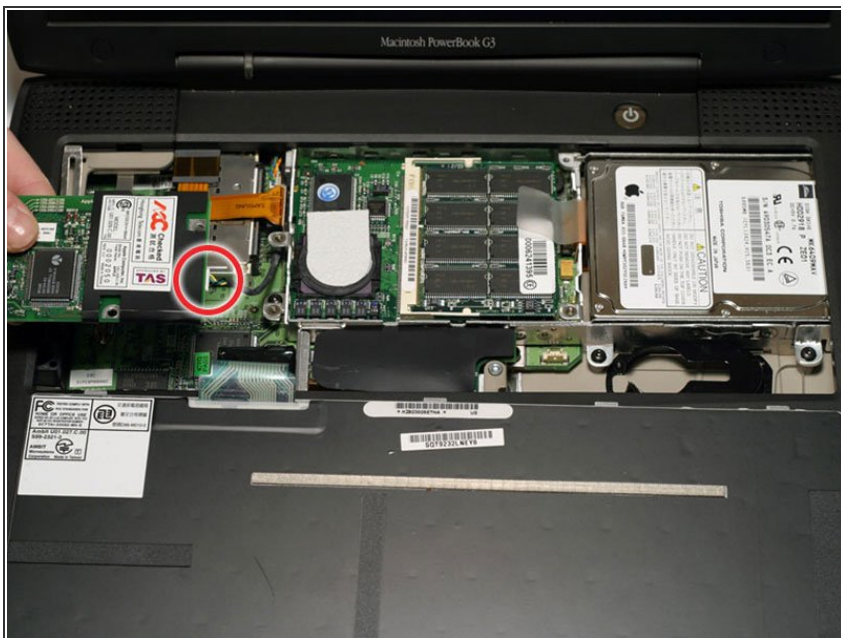


## Step 10



- Use a spudger, the tips of your fingers, or a flat non-metal tool to get under the modem's edge and pry it up from its socket as shown in the picture.

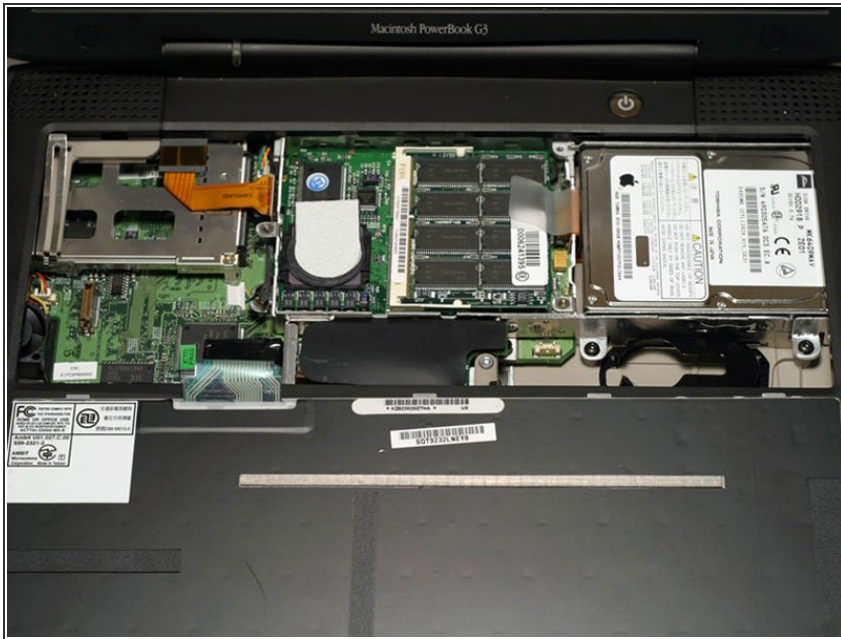
## Step 11



- Disconnect the cable from the right side of the modem.

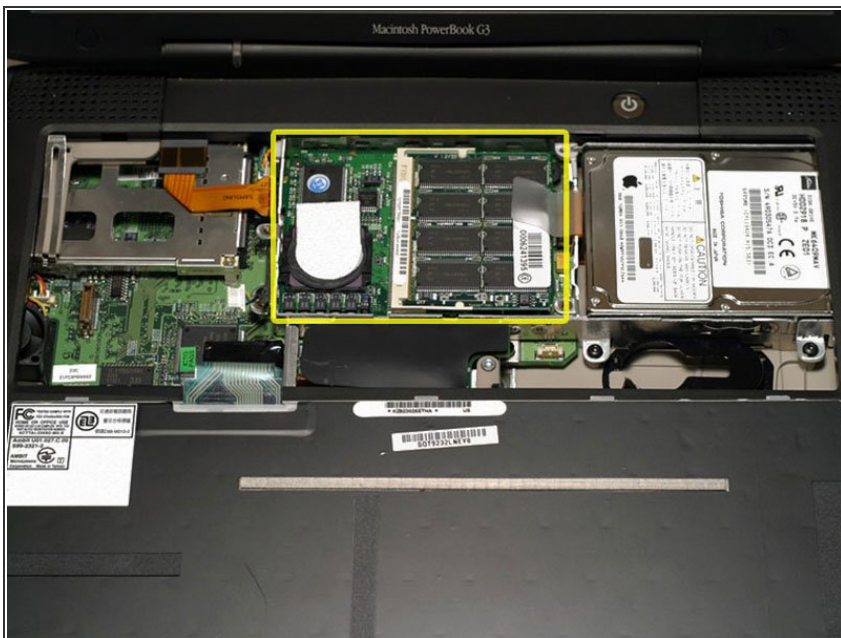


## Step 12



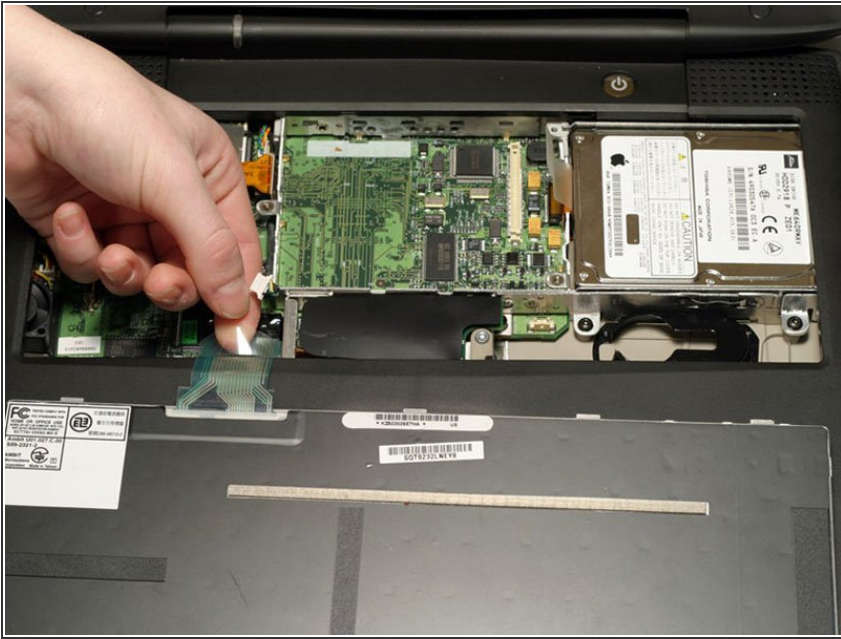
- Your laptop should look approximately like this.

## Step 13 — Processor



- Use a spudger, the tips of your fingers, or a flat non-metal tool to pry up the processor's right side.

## Step 14



- Disconnect the keyboard cable from the logic board by pulling directly up on the clear plastic loop.
- ⓘ This step is out of sequence with the keyboard because in order to remove the keyboard you must first remove the modem.

## Step 15



- Your laptop should look approximately like this.

To reassemble your device, follow these instructions in reverse order.