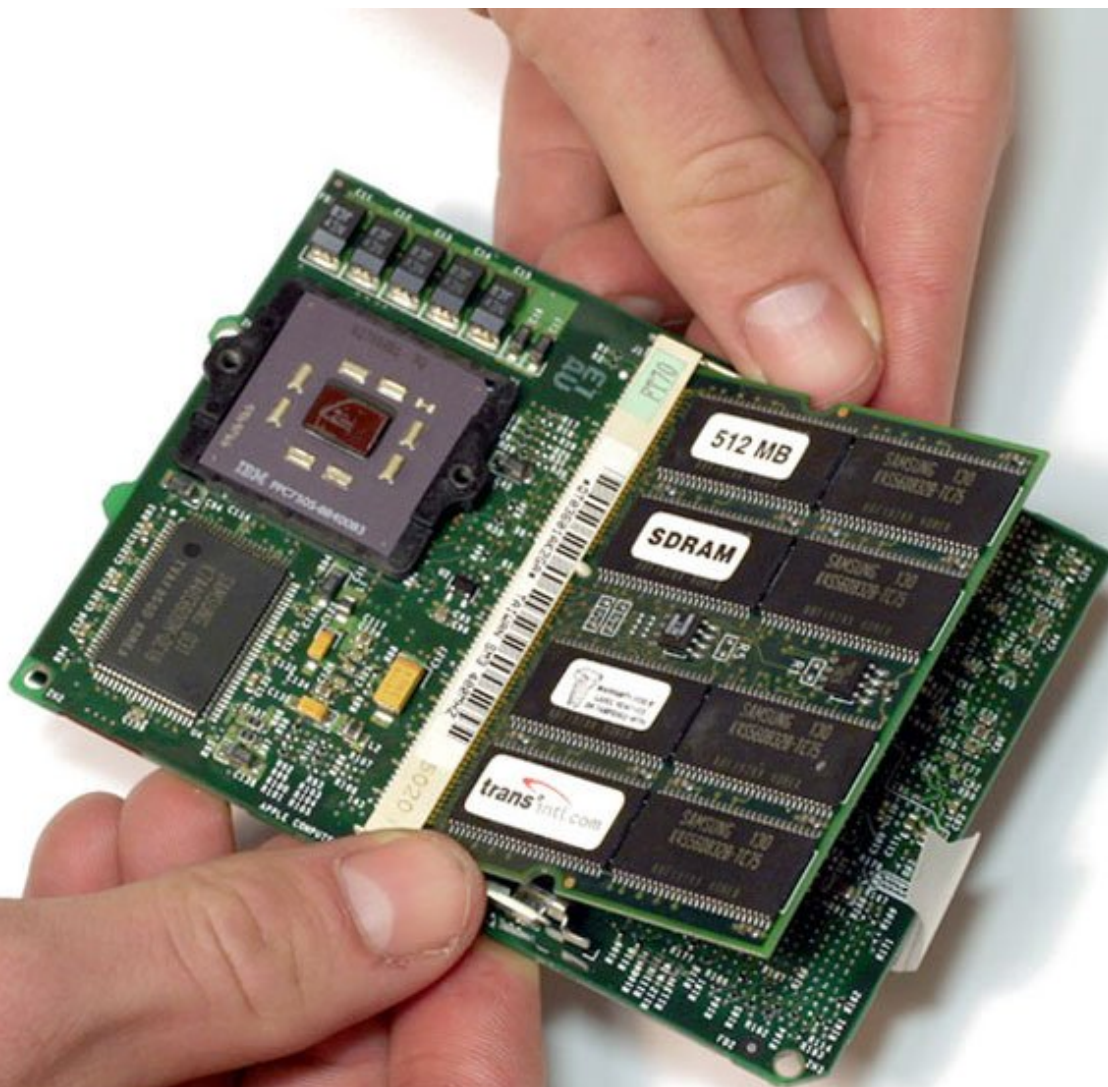




PowerBook G3 Pismo RAM Replacement

Written By: iRobot



INTRODUCTION

Two RAM slots allow up to 1 GB of PC100 or PC133 RAM.



TOOLS:

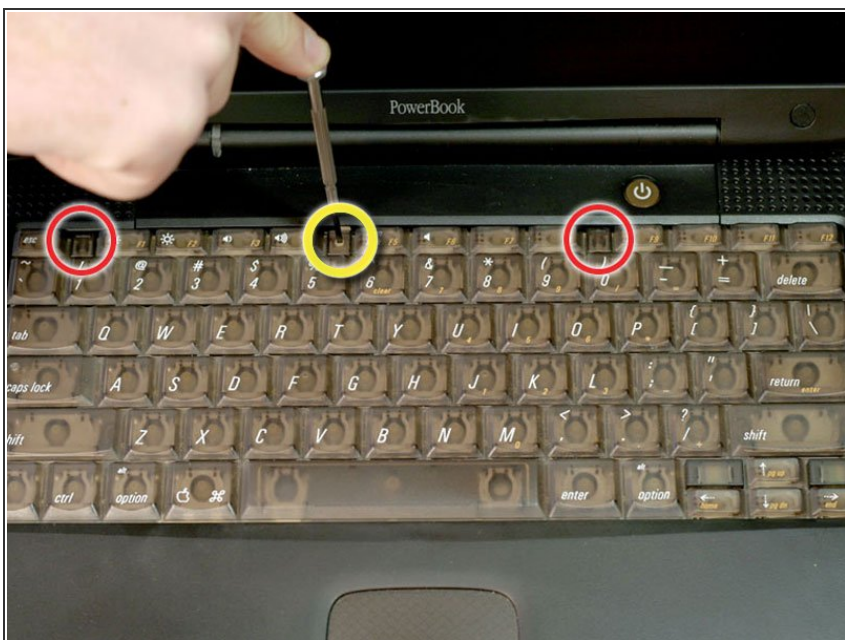
- [Anti-Static Wrist Strap](#) (1)
- [Phillips #00 Screwdriver](#) (1)
- [Spudger](#) (1)
- [T8 Torx Screwdriver](#) (1)



PARTS:

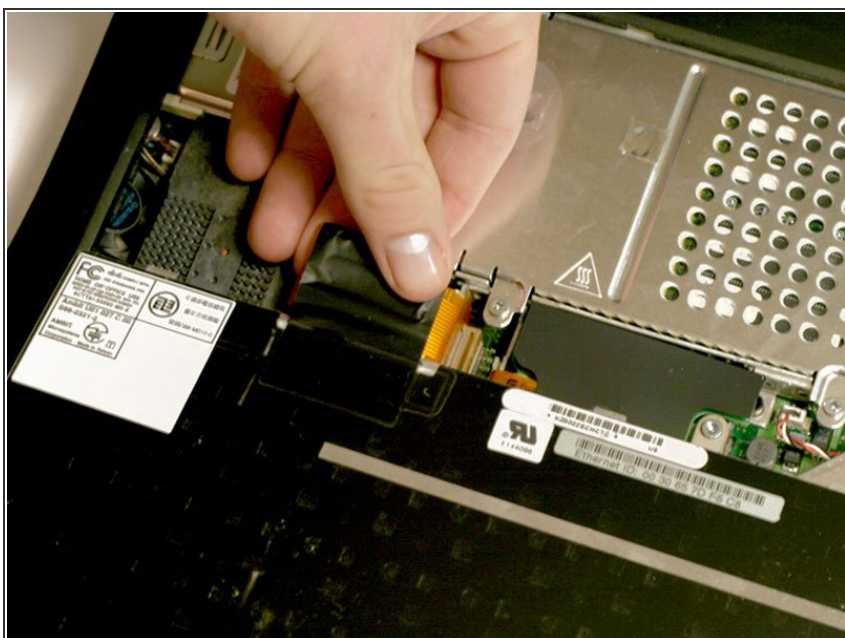
- [PC100 32 MB RAM Chip](#) (1)
- [PC133 256 MB RAM Chip](#) (1)
- [PC133 512 MB RAM Chip](#) (1)
- [PC100 64 MB RAM Chip](#) (1)
- [PC100 128 MB RAM Chip Full-Profile](#) (1)
- [PC100 128 MB RAM Chip](#) (1)
- [PC100 256 MB RAM Chip Full-Profile \(Dual Layer\)](#) (1)
- [PC100 256 MB RAM Chip \(Dual Layer\)](#) (1)
- [PC100 512 MB RAM Chip Full-Profile](#) (1)
- [PC133 128 MB RAM Chip](#) (1)

Step 1 — Keyboard



- Turn the keyboard locking screw so that it is parallel to the space bar.
- Pull the keyboard release tabs toward you and lift up on the keyboard until it pops free.
- Lift the keyboard out by pulling it up and away from you. Rest the keyboard, face down, on top of the track pad.

Step 2



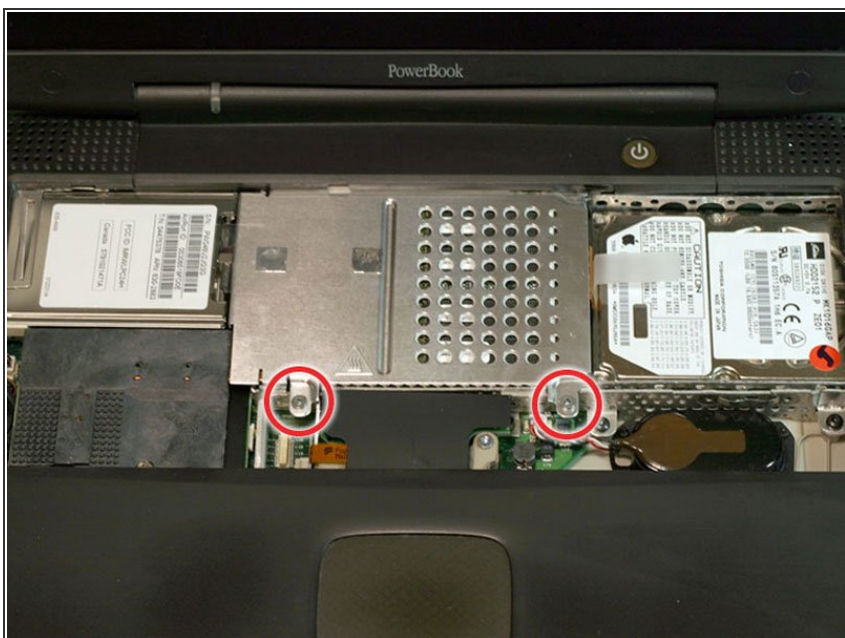
- Pull the keyboard ribbon straight up from the logic board. Place the keyboard aside.
- ⓘ The connector may be tight. Gently rock the connector from side to side while pulling directly upward to free it. You can use this technique on many of the cards and cables you'll be disconnecting.
- ⓘ Make sure you have removed the laptop battery and CD/DVD modules from the expansion bays before proceeding.

Step 3



- Your laptop should look approximately like this.

Step 4 — Heat Shield



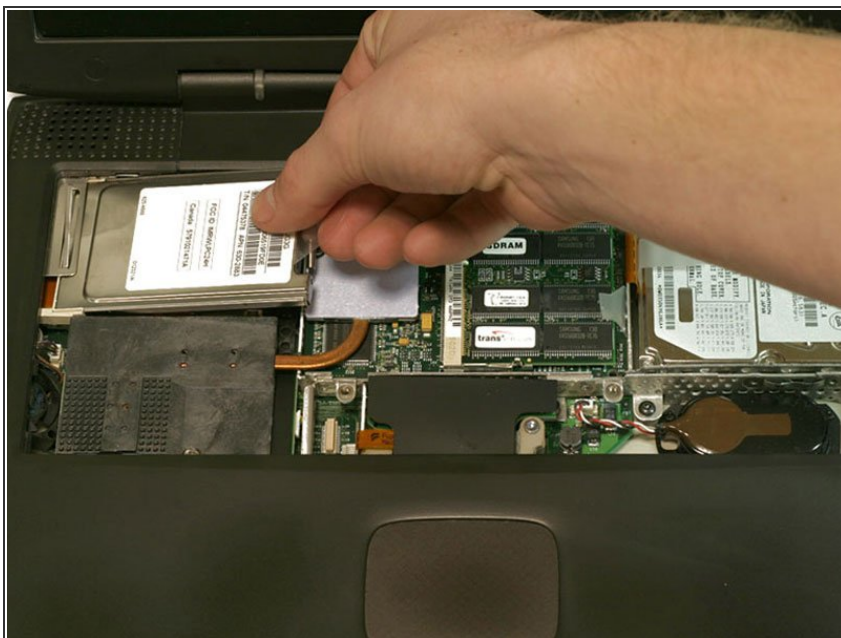
- Remove the two silver Phillips #1 screws that attach the heat shield to the internal metal framework.
- Lift the heat shield up and pull it toward you.

Step 5



- Your laptop should look approximately like this.

Step 6 — Airport Card



- ⓘ Skip this step if your computer does not have an Airport card installed.
- Firmly grasp the plastic tab attached to the Airport card and pull up and then to the right.
- ⓘ The Airport card is still attached to the antenna cable, so don't just yank it out of the slot.

Step 7



- Disconnect the antenna cable from the Airport card.

Step 8 — PRAM Battery



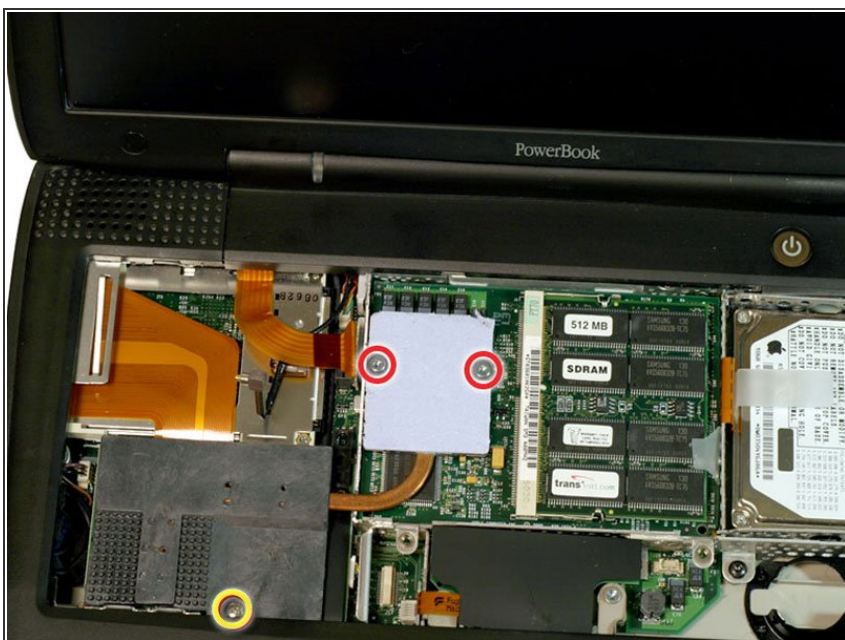
- Pull the battery cable directly up from the logic board.
- Remove the battery from its holder by pulling up and to the left.

Step 9



- Your laptop should look approximately like this.

Step 10 — Heat Sink



- Remove the long silver Phillips #1 screw from the heat sink.
- Remove the two T8 Torx screws that attach the heat sink to the processor.

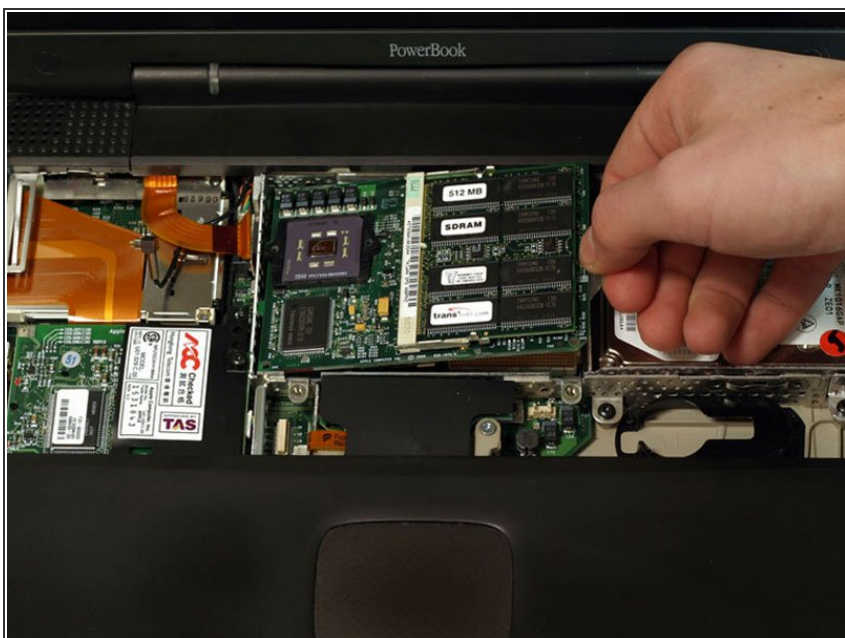
Step 11



- Lift the heat sink up from the left side and pull it out.

ⓘ If you need to mount the heat sink back into the laptop, we have a [thermal paste guide](#) that makes replacing the thermal compound easy.

Step 12 — Processor



- Grasp the plastic tab on the processor's right side and pull it directly up.

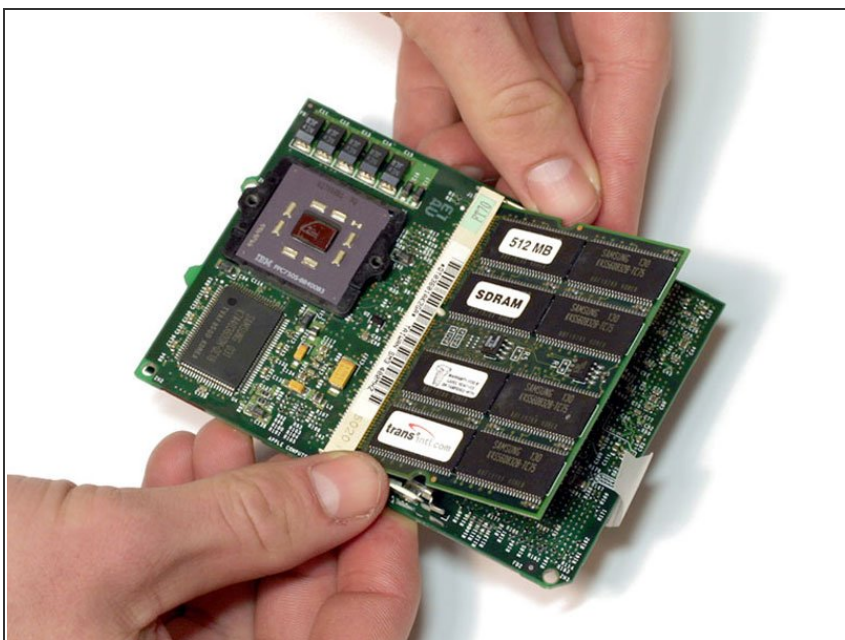
ⓘ Some processors may be missing the plastic pull tab. In this case, we suggest using a non-metal tool to gently pry up the processor. Slip the tool's thin edge under the front right corner of the processor and carefully pry it up.

Step 13



- Your laptop should look approximately like this.

Step 14 — RAM



- Release the tabs on each side of the RAM chip at the same time. These tabs lock the chip in place and

releasing them will cause the chip to "pop" up.

- Pull the RAM chip out.
 - ⓘ There are RAM slots on both sides of the processor. We recommend installing higher capacity chips on the bottom so that if you want to upgrade later, you won't have to remove the processor.
-

To reassemble your device, follow these instructions in reverse order.