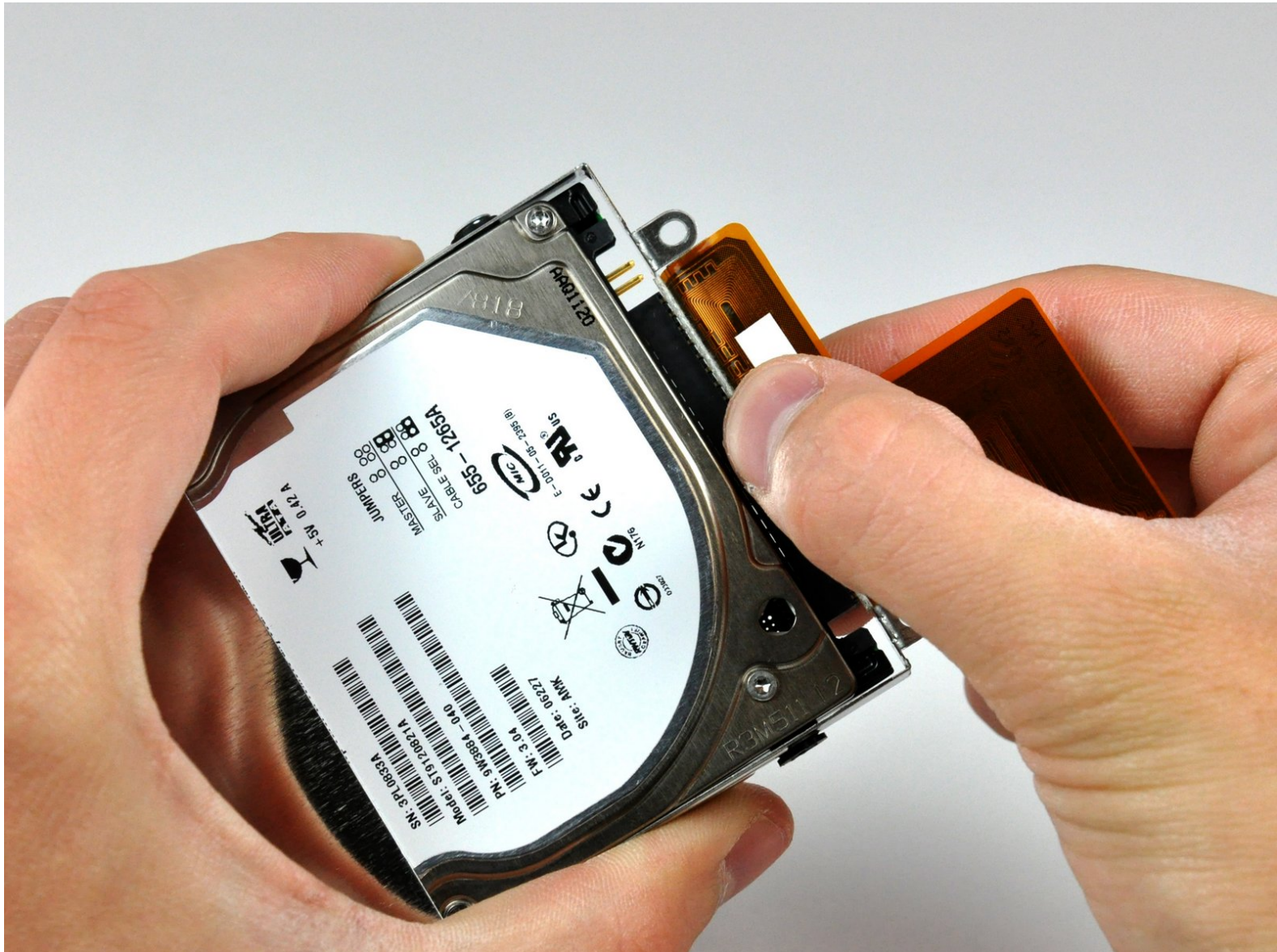




# PowerBook G4 Aluminum 17" 1.67 GHz (High-Res) Hard Drive Replacement

Replace the hard drive in your PowerBook G4 Aluminum 17" 1.67 GHz (High-Res).

Written By: Walter Galan



# INTRODUCTION

Upgrade your hard drive for more storage space.



## TOOLS:

- [Phillips #00 Screwdriver](#) (1)
- [Spudger](#) (1)
- [T8 Torx Screwdriver](#) (1)

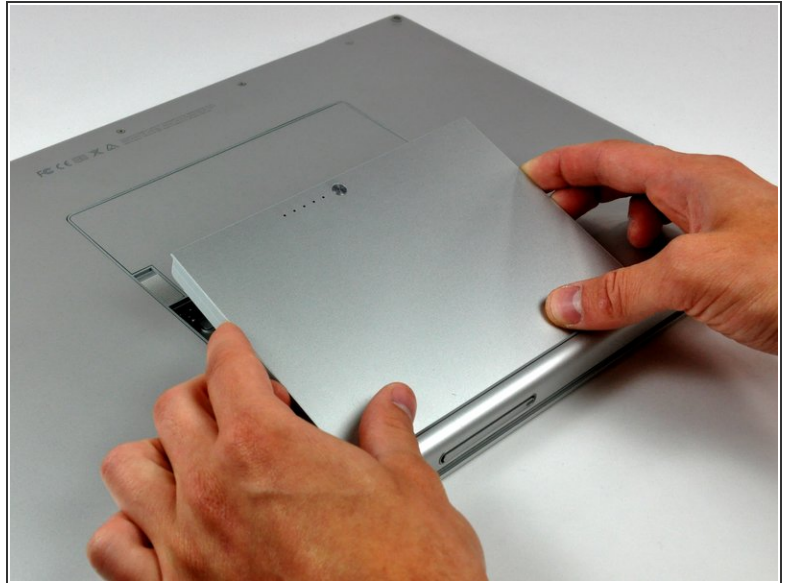


## PARTS:

- [160 GB 5400 RPM ATA Hard Drive](#) (1)
- [320 GB 5400 RPM ATA Hard Drive \(New\)](#) (1)
- [G4 Aluminum 17" 1.67 GHz \(HR\) Hard Drive Bracket & Cable](#) (1)



## Step 1 — Battery



- Use your thumbs to push the two battery retaining tabs away from the battery.
- The battery should pop up enough to rotate it toward yourself and lift it out of the lower case.

## Step 2 — Memory Door



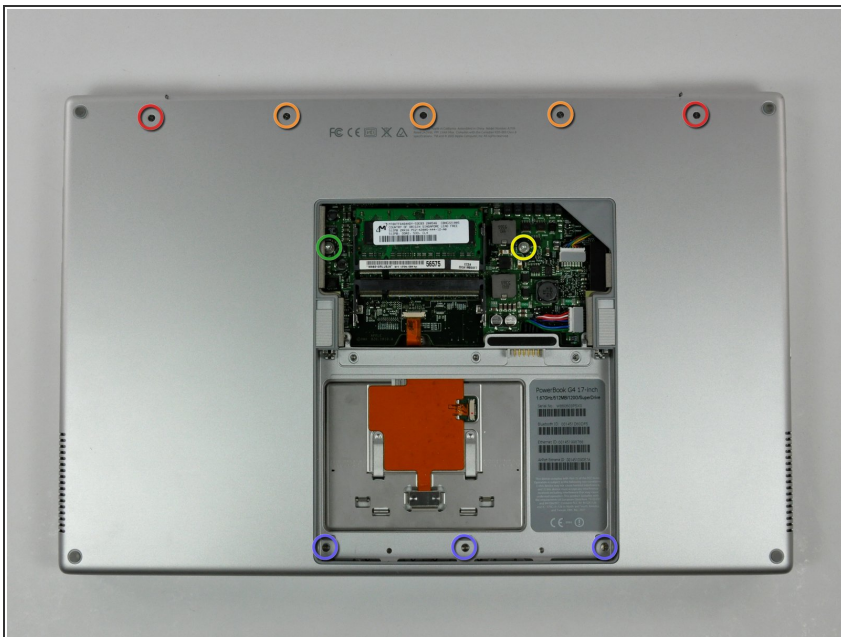
- Remove the three 2.3 mm Phillips screws securing the memory cover to the lower case.

### Step 3



- Lift the memory cover slightly and pull it toward yourself to remove it from the lower case.

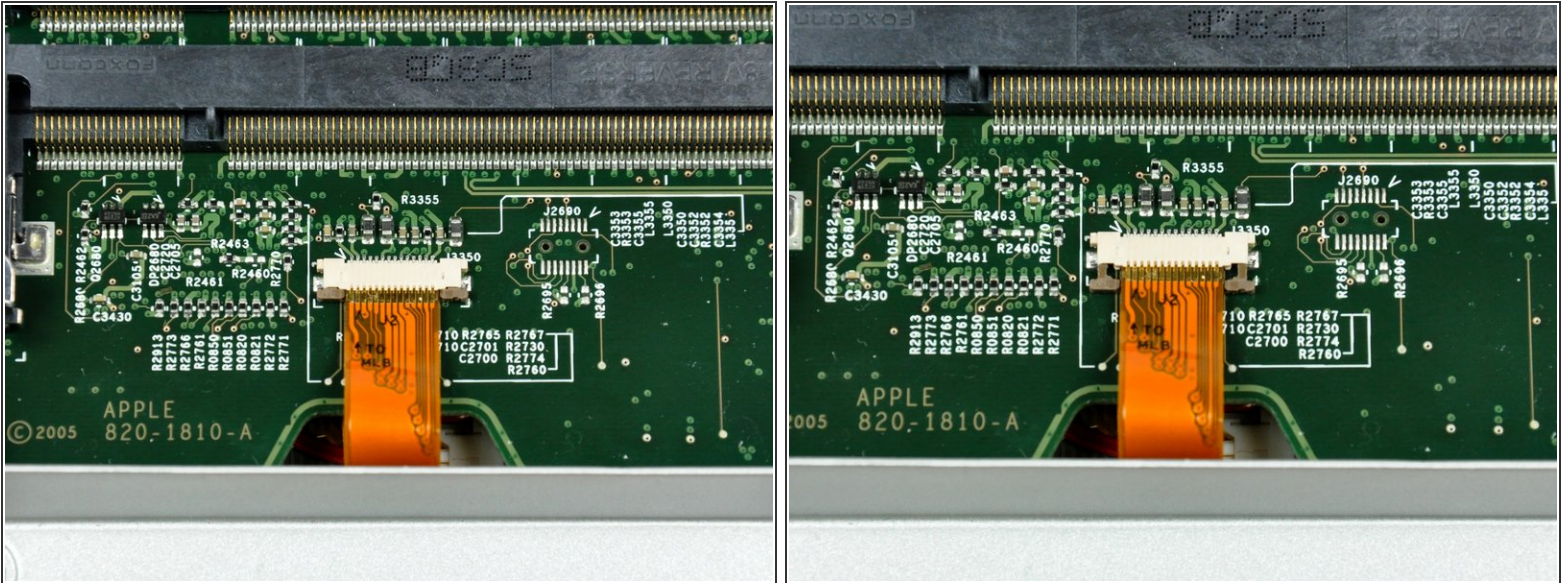
### Step 4 — Upper Case



- Remove the following ten screws:
  - Two 14.7 mm shouldered Phillips.
  - Three 12.3 mm Phillips.
  - One 3.8 mm T8 Torx.
  - One 6.8 mm T8 Torx.
  - Three 1.3 mm Phillips.

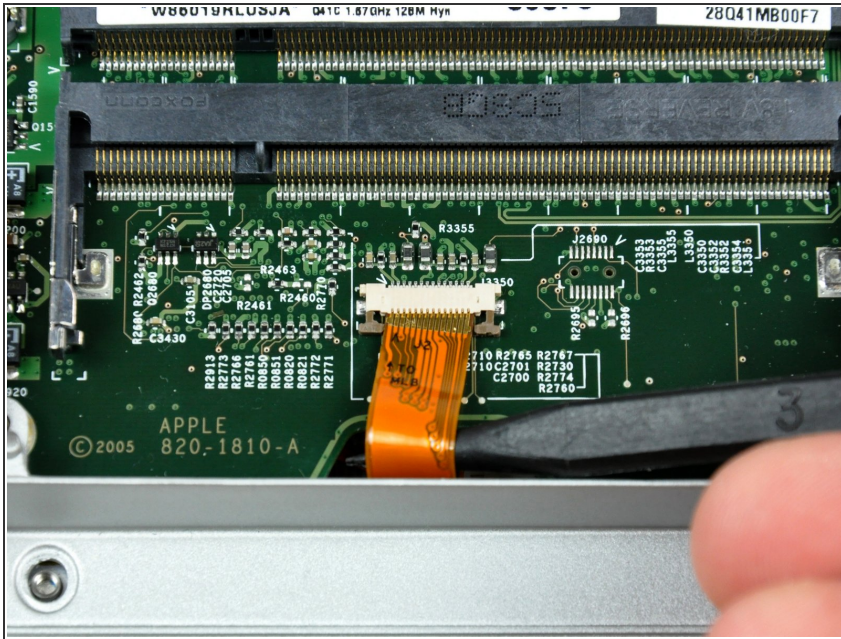


## Step 5



- The ZIF cable is located underneath the bottom RAM slot. If your PowerBook has both RAM slots occupied, make sure to [remove](#) the RAM chip.
- Use your fingernails to separate the ZIF cable lock away from its socket. (Move the two brown bits down 1mm)
- ⚠ The ZIF cable lock will move about a millimeter away from the socket before it stops (see picture 2). **Do not** try to remove the ZIF cable lock.

## Step 6



- Use the tip of a spudger to slide the trackpad ribbon cable out of its socket.

## Step 7



- Remove the four 3.4 mm Phillips screws from the PC card side of the PowerBook.
- ☑ When replacing these screws, you must reinstall each screw in the correct order. Begin by installing the screw closest to the display hinge, and go out from there.

## Step 8



- Remove the four 3.4 mm Phillips screws from the DVI connector side of the PowerBook.
- ★ When replacing these screws, you must reinstall each screw in the correct order. Begin by installing the screw closest to the display hinge, and go out from there.
- ⓘ During reassembly, make sure to reinstall the two screws on the right into their appropriate locations, and not the DVI port anchor holes.

## Step 9



- Depress the display latch release button and open your display.

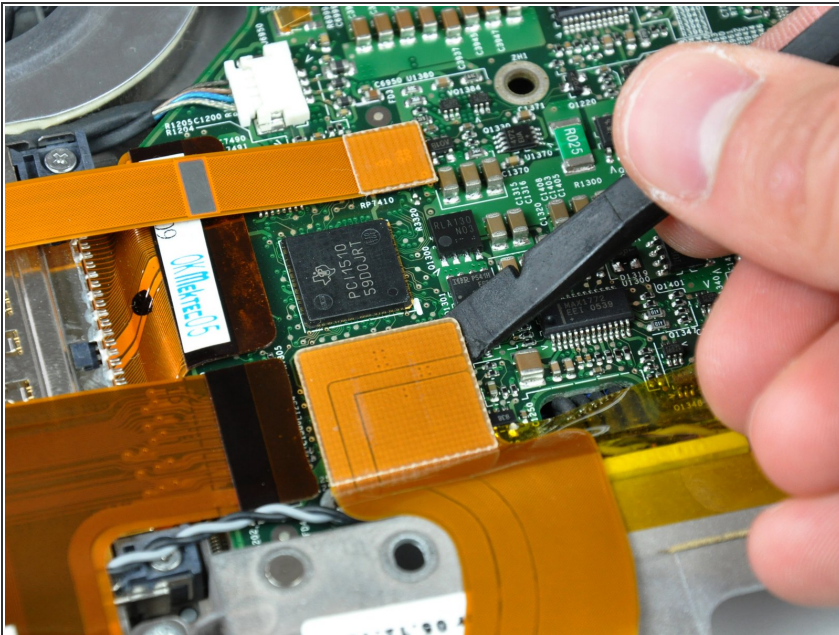


## Step 10



- Starting near the display, lift the upper case straight up off the lower case, minding any cables that may get caught.

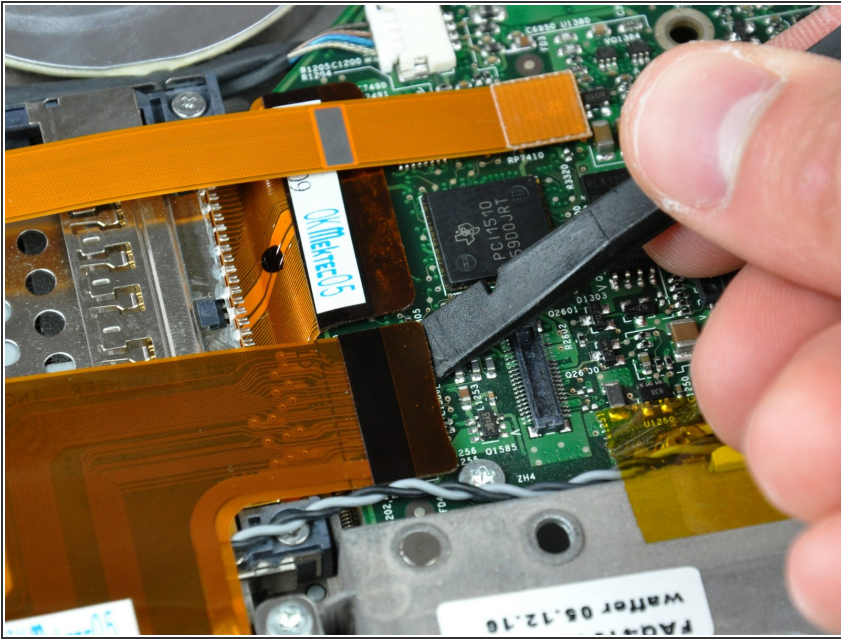
## Step 11 — Hard Drive



- Use the flat end of a spudger to pry the sound card ribbon cable connector up off the logic board.
- Move the sound card ribbon cable away from the face of the hard drive.
- ⓘ It is not necessary to disconnect the sound card ribbon cable from the sound card.



## Step 12



- Use the flat end of a spudger to pry the hard drive ribbon cable connector up off the logic board.

## Step 13



- Remove the following four screws:
  - Three 11.1 mm T8 Torx.
  - One 3.9 mm T8 Torx.
- Lift the hard drive out of the lower case.

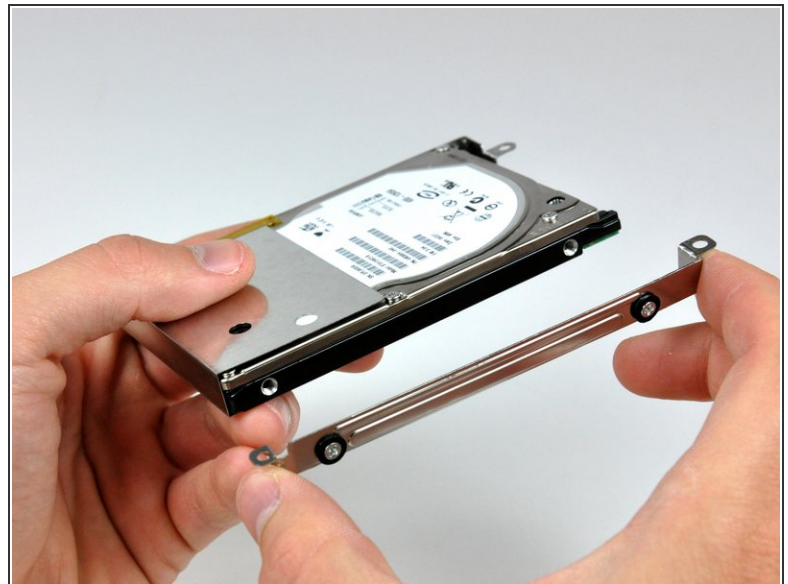


## Step 14 — Hard Drive



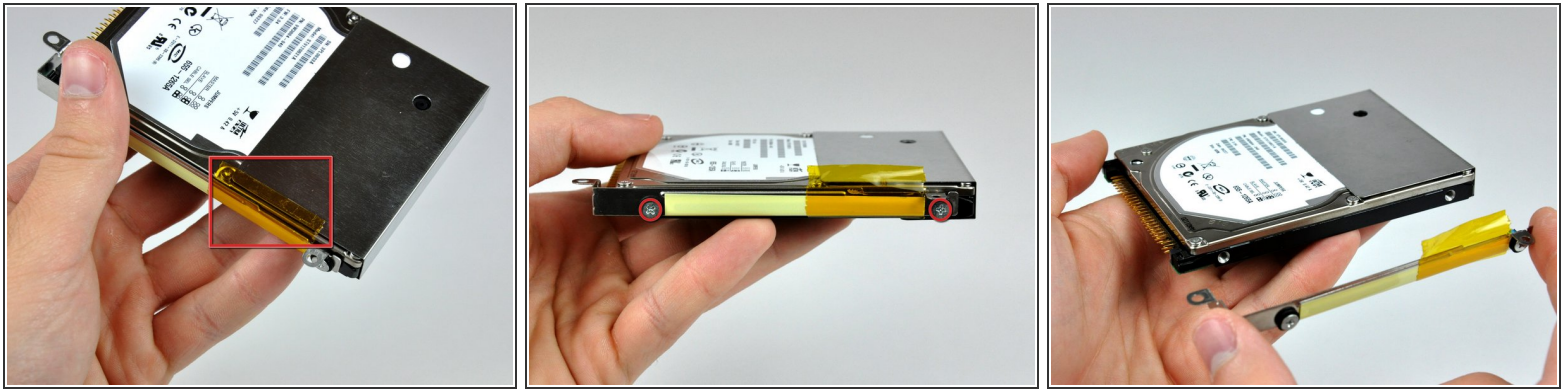
- Pull the hard drive cable straight away from the hard drive. It is helpful to wiggle the connector while pulling it away from the hard drive.
- ⓘ If you happen to bend the hard drive pins during removal, use the connector as a guide to bend them straight.

## Step 15



- Remove the two Phillips screws from the right side of the hard drive.
- Pull the right hard drive bracket away from the hard drive.

## Step 16



- If necessary, peel the piece of tape holding the left hard drive bracket to the hard drive shield off the hard drive shield.
- ⓘ It is not necessary to completely remove this piece of tape.
- Remove the two Phillips screws from the left side of the hard drive.
- Pull the hard drive bracket away from the hard drive.

## Step 17



- Use the flat end of a spudger to separate the adhesive holding the hard drive shield on the hard drive.



## Step 18



- Pull the hard drive shield off the hard drive.

To reassemble your device, follow these instructions in reverse order.