



PowerBook G4 Aluminum 17" 1.67 GHz (High-Res) Modem Replacement

Written By: Walter Galan



INTRODUCTION

Replace your modem to regain dial-up internet access.



TOOLS:

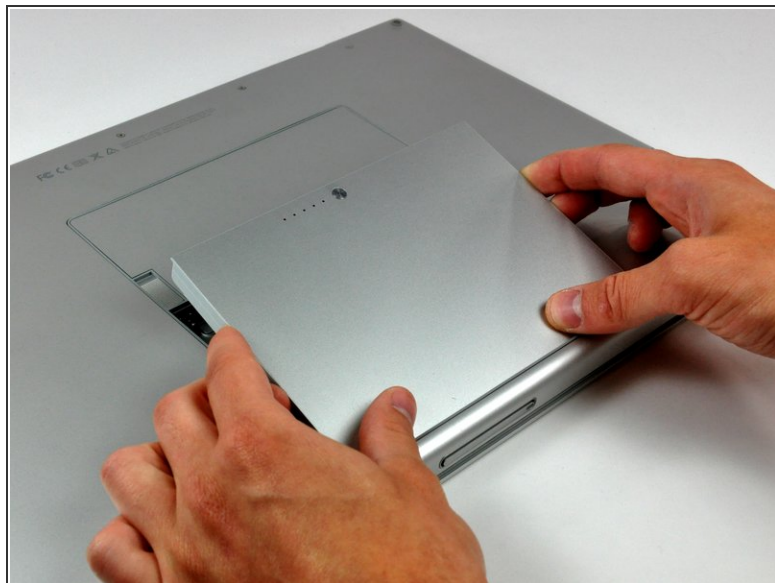
- [4mm Nut Driver](#) (1)
- [Phillips #00 Screwdriver](#) (1)
- [Spudger](#) (1)
- [T8 Torx Screwdriver](#) (1)



PARTS:

- [G4 Aluminum 15" 1.33/1.5/1.67 GHz Modem](#) (1)
- [G4 Aluminum 17" 1.67 GHz \(HR\) Modem Cable](#) (1)

Step 1 — Battery



- Use your thumbs to push the two battery retaining tabs away from the battery.
- The battery should pop up enough to rotate it toward yourself and lift it out of the lower case.

Step 2 — Memory Door



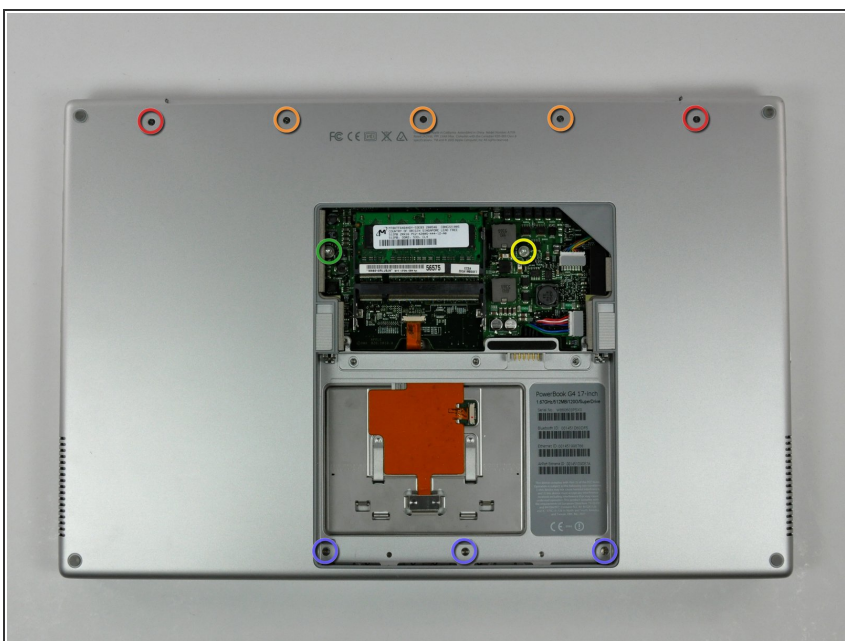
- Remove the three 2.3 mm Phillips screws securing the memory cover to the lower case.

Step 3



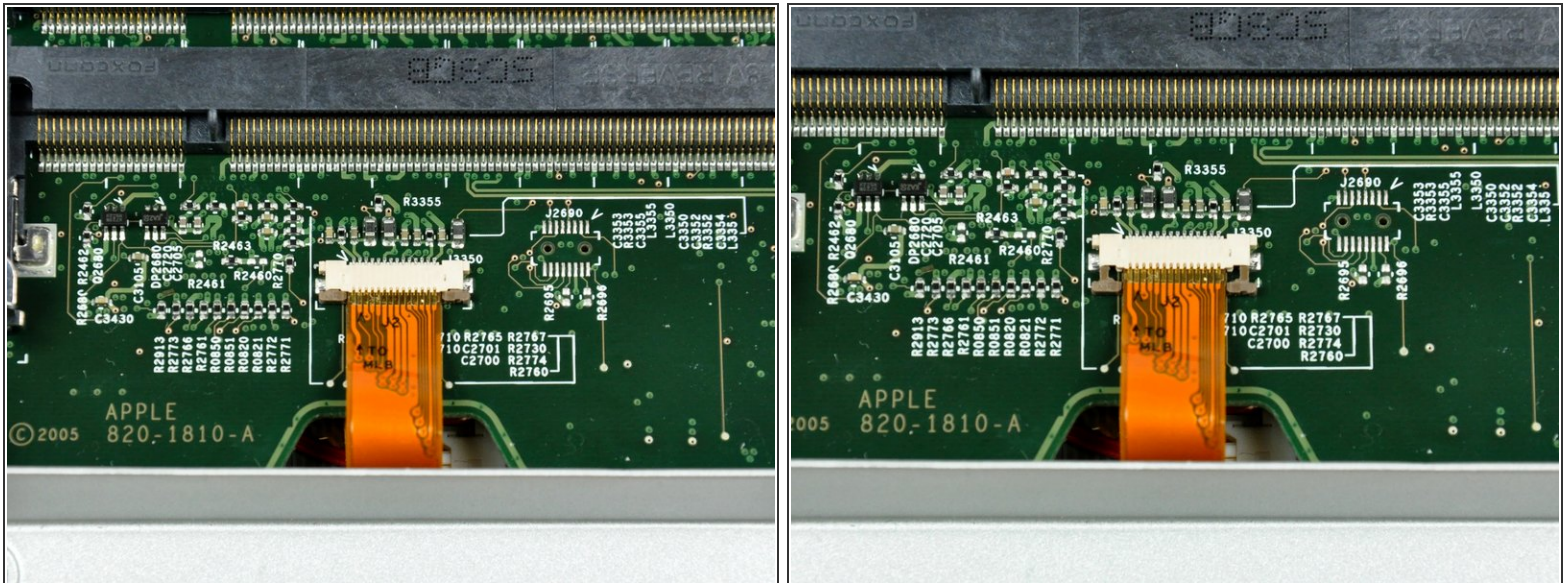
- Lift the memory cover slightly and pull it toward yourself to remove it from the lower case.

Step 4 — Upper Case



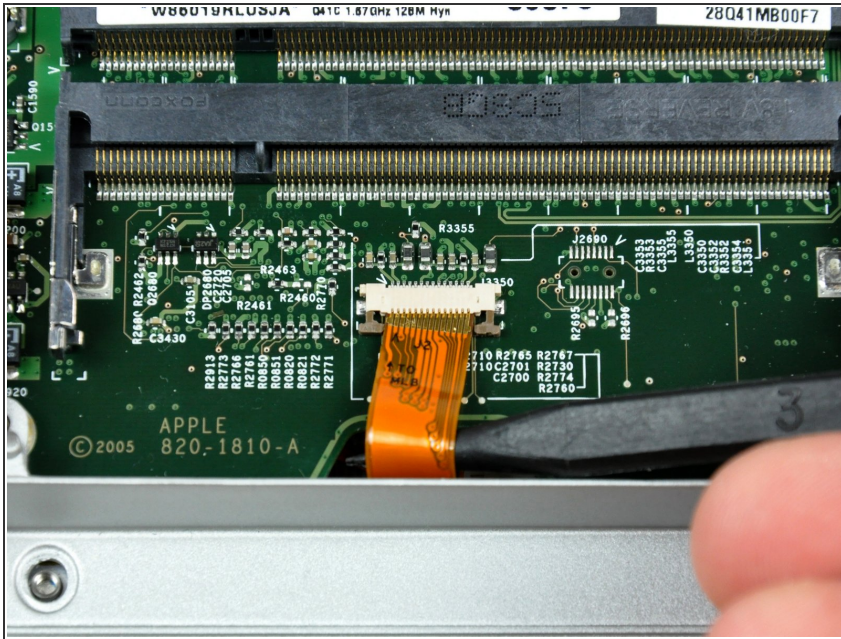
- Remove the following ten screws:
 - Two 14.7 mm shouldered Phillips.
 - Three 12.3 mm Phillips.
 - One 3.8 mm T8 Torx.
 - One 6.8 mm T8 Torx.
 - Three 1.3 mm Phillips.

Step 5



- The ZIF cable is located underneath the bottom RAM slot. If your PowerBook has both RAM slots occupied, make sure to [remove](#) the RAM chip.
- Use your fingernails to separate the ZIF cable lock away from its socket. (Move the two brown bits down 1mm)
- The ZIF cable lock will move about a millimeter away from the socket before it stops (see picture 2). **Do not** try to remove the ZIF cable lock.

Step 6



- Use the tip of a spudger to slide the trackpad ribbon cable out of its socket.

Step 7



- Remove the four 3.4 mm Phillips screws from the PC card side of the PowerBook.
- ☑ When replacing these screws, you must reinstall each screw in the correct order. Begin by installing the screw closest to the display hinge, and go out from there.

Step 8



- Remove the four 3.4 mm Phillips screws from the DVI connector side of the PowerBook.
- 📌 When replacing these screws, you must reinstall each screw in the correct order. Begin by installing the screw closest to the display hinge, and go out from there.
- ℹ️ During reassembly, make sure to reinstall the two screws on the right into their appropriate locations, and not the DVI port anchor holes.

Step 9



- Depress the display latch release button and open your display.

Step 10



- Starting near the display, lift the upper case straight up off the lower case, minding any cables that may get caught.

Step 11 — Modem



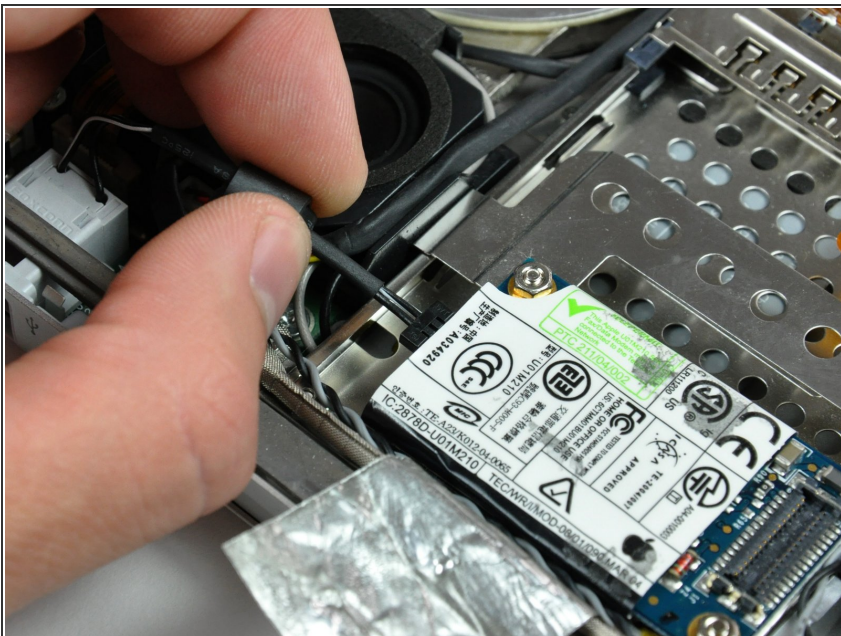
- If necessary, peel back the strip of aluminum tape covering the modem cable.

Step 12



- Use the flat end of a spudger to pry the modem cable connector up off the modem.

Step 13



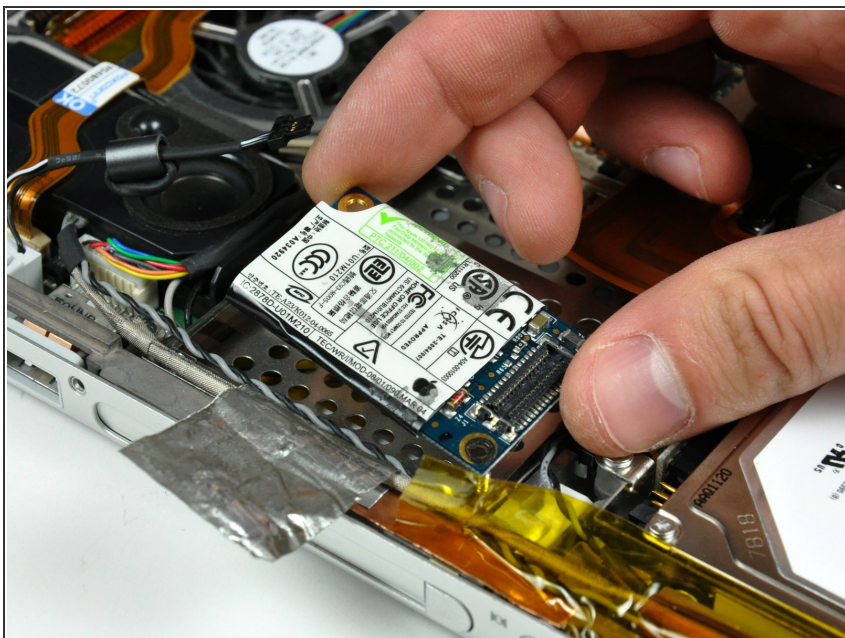
- Disconnect the RJ-11 cable from the modem.

Step 14



- Use a 4 mm nut driver to remove the two nuts securing the modem to the PC card cage.

Step 15



- Lift the modem straight up off the studs on the PC card cage.

To reassemble your device, follow these instructions in reverse order.