



PowerBook G4 Aluminum 17" 1.67 GHz (High-Res) PRAM Battery & USB Board Replacement

Written By: Walter Galan



INTRODUCTION

Replace your PRAM battery & USB board to preserve date and time after system shutdowns and to fix an unresponsive front USB port.



TOOLS:

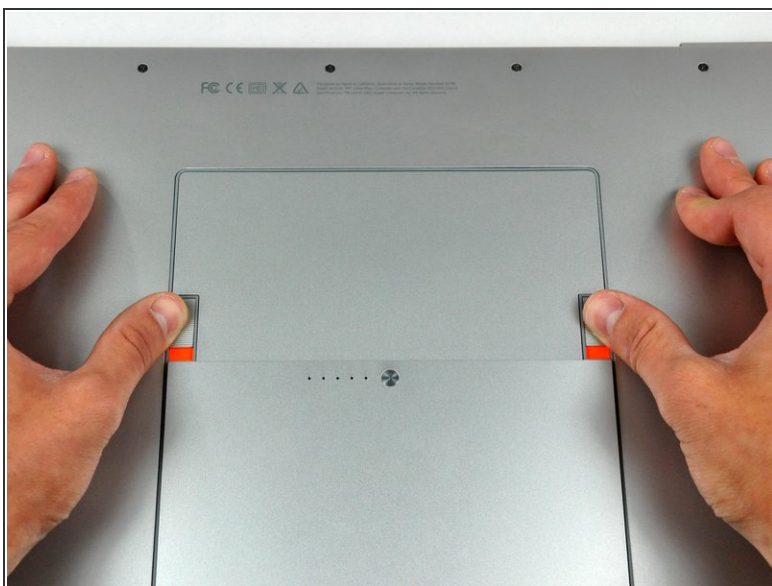
- [Phillips #00 Screwdriver](#) (1)
- [Spudger](#) (1)
- [T8 Torx Screwdriver](#) (1)



PARTS:

- [G4 Aluminum 17" 1.67 GHz \(HR\) PRAM Battery & USB Board](#) (1)

Step 1 — Battery



- Use your thumbs to push the two battery retaining tabs away from the battery.
- The battery should pop up enough to rotate it toward yourself and lift it out of the lower case.

Step 2 — Memory Door



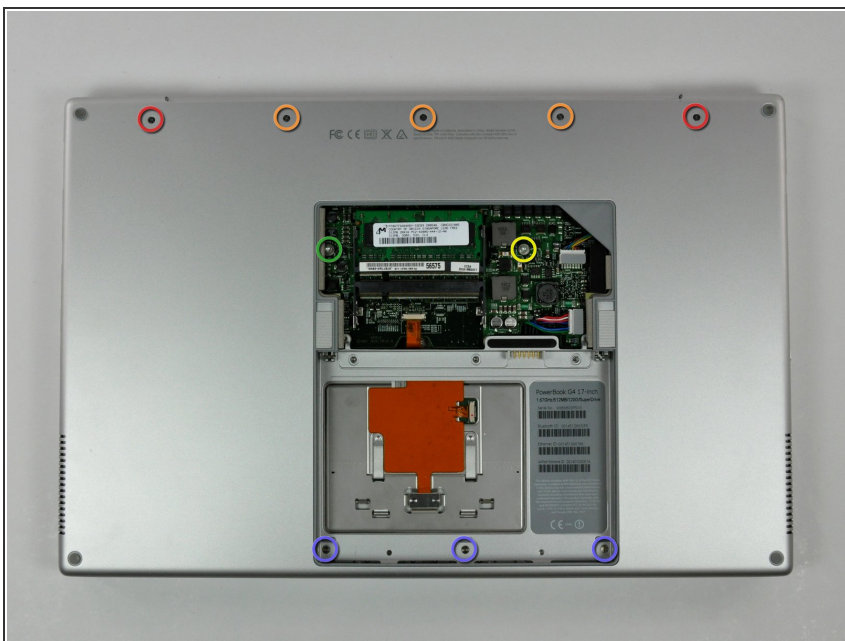
- Remove the three 2.3 mm Phillips screws securing the memory cover to the lower case.

Step 3



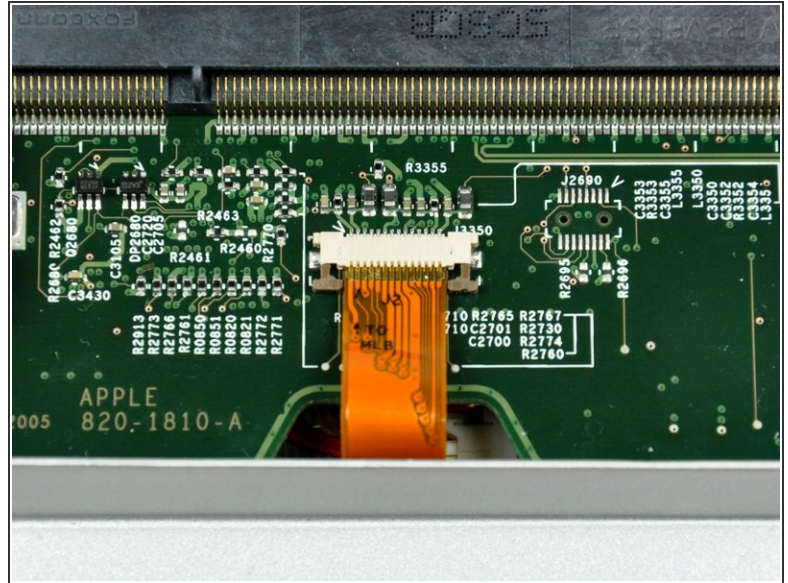
- Lift the memory cover slightly and pull it toward yourself to remove it from the lower case.

Step 4 — Upper Case



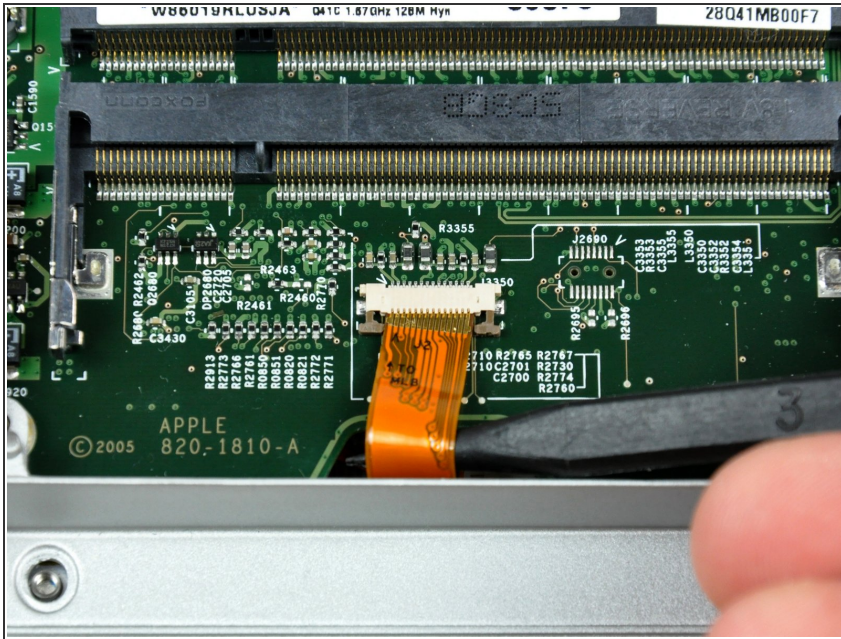
- Remove the following ten screws:
 - Two 14.7 mm shouldered Phillips.
 - Three 12.3 mm Phillips.
 - One 3.8 mm T8 Torx.
 - One 6.8 mm T8 Torx.
 - Three 1.3 mm Phillips.

Step 5



- The ZIF cable is located underneath the bottom RAM slot. If your PowerBook has both RAM slots occupied, make sure to [remove](#) the RAM chip.
- Use your fingernails to separate the ZIF cable lock away from its socket. (Move the two brown bits down 1mm)
- The ZIF cable lock will move about a millimeter away from the socket before it stops (see picture 2). **Do not** try to remove the ZIF cable lock.

Step 6



- Use the tip of a spudger to slide the trackpad ribbon cable out of its socket.

Step 7



- Remove the four 3.4 mm Phillips screws from the PC card side of the PowerBook.
- ☑ When replacing these screws, you must reinstall each screw in the correct order. Begin by installing the screw closest to the display hinge, and go out from there.

Step 8



- Remove the four 3.4 mm Phillips screws from the DVI connector side of the PowerBook.
- ★ When replacing these screws, you must reinstall each screw in the correct order. Begin by installing the screw closest to the display hinge, and go out from there.
- ⓘ During reassembly, make sure to reinstall the two screws on the right into their appropriate locations, and not the DVI port anchor holes.

Step 9



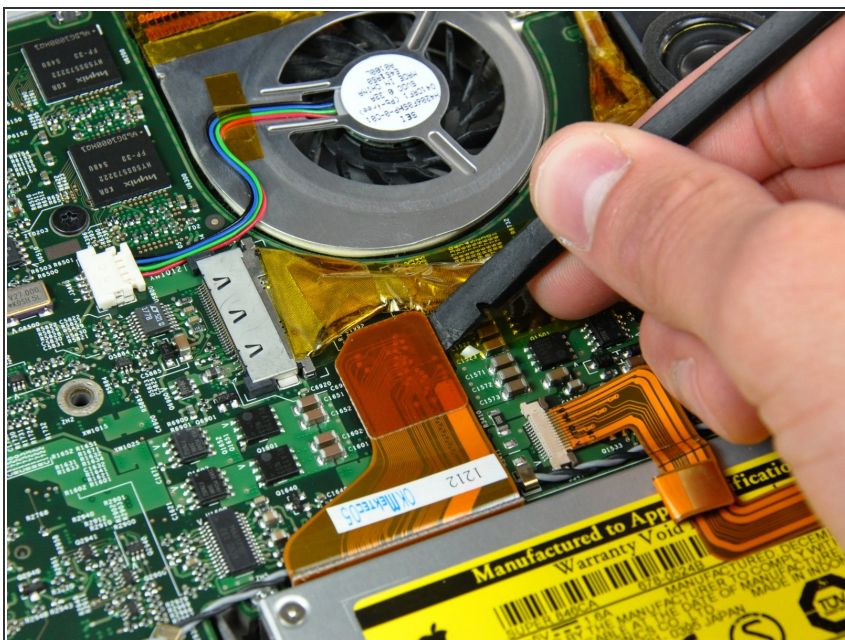
- Depress the display latch release button and open your display.

Step 10



- Starting near the display, lift the upper case straight up off the lower case, minding any cables that may get caught.

Step 11 — Optical Drive



- Use the flat end of a spudger to pry the optical drive cable connector up off the logic board.

Step 12



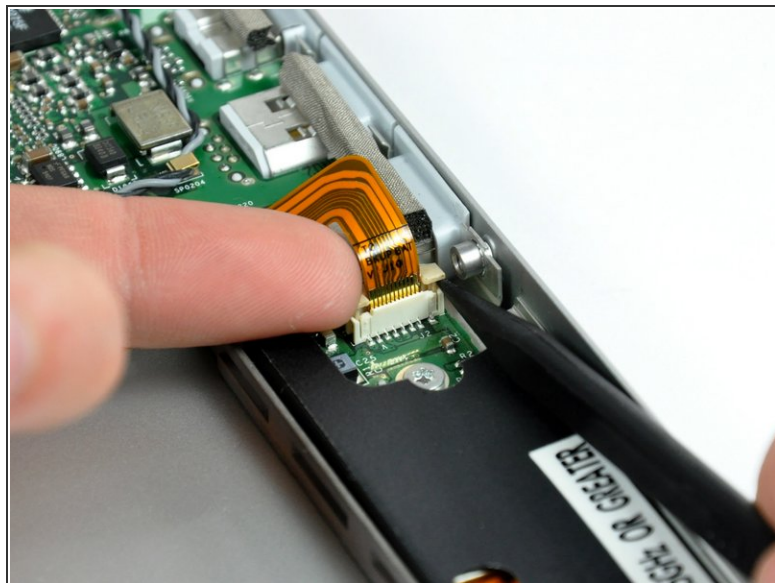
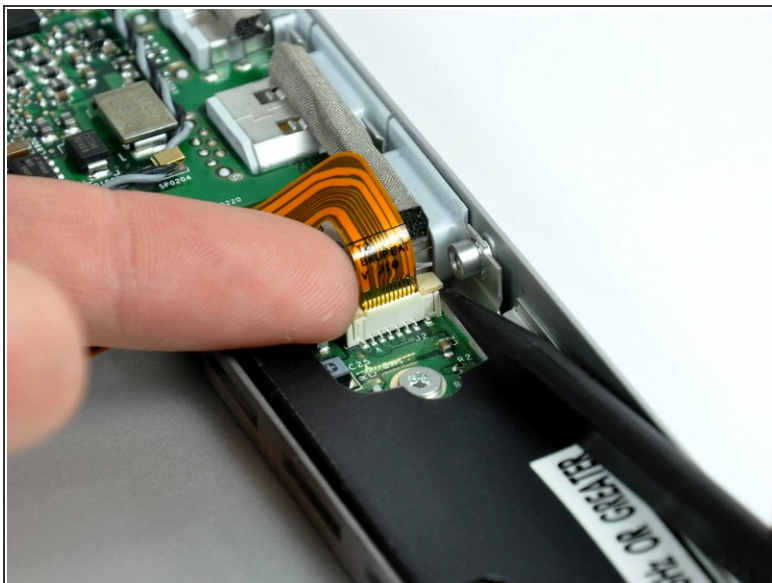
- Remove the following four screws securing the optical drive to the lower case:
 - Three 6.8 mm T8 Torx.
 - One 3.8 mm T8 Torx.

Step 13



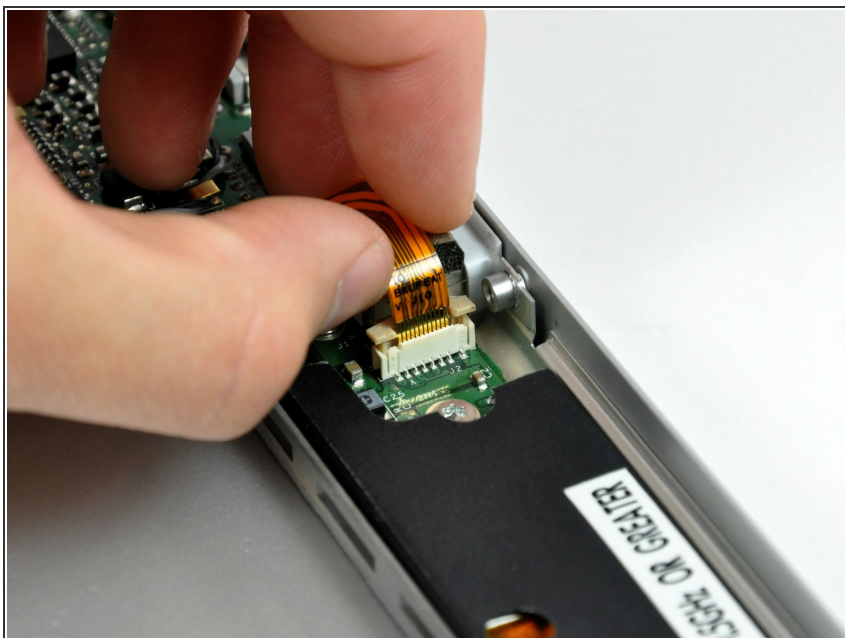
- Lift the optical drive out of the lower case, being careful not to disturb the PRAM battery & USB board ribbon cable.

Step 14 — PRAM Battery & USB Board



- Use your fingernail and the tip of a spudger to raise the ZIF cable lock slightly up off its socket.
- ⓘ The ZIF cable lock should raise about 1 mm and stop. **Do not** attempt to completely remove the ZIF cable lock.

Step 15



- Pull the ribbon cable straight up out of the ZIF socket.

Step 16



- Remove the two T8 Torx screws securing the PRAM battery & USB board to the lower case.
- Pull the board away from the side of the lower case to separate the USB socket from the bezel on the lower case.

Step 17



- Lift the board slightly out of the lower case and peel the small foam EMI gasket off the USB socket, then remove the PRAM battery & USB board from your powerbook.

To reassemble your device, follow these instructions in reverse order.