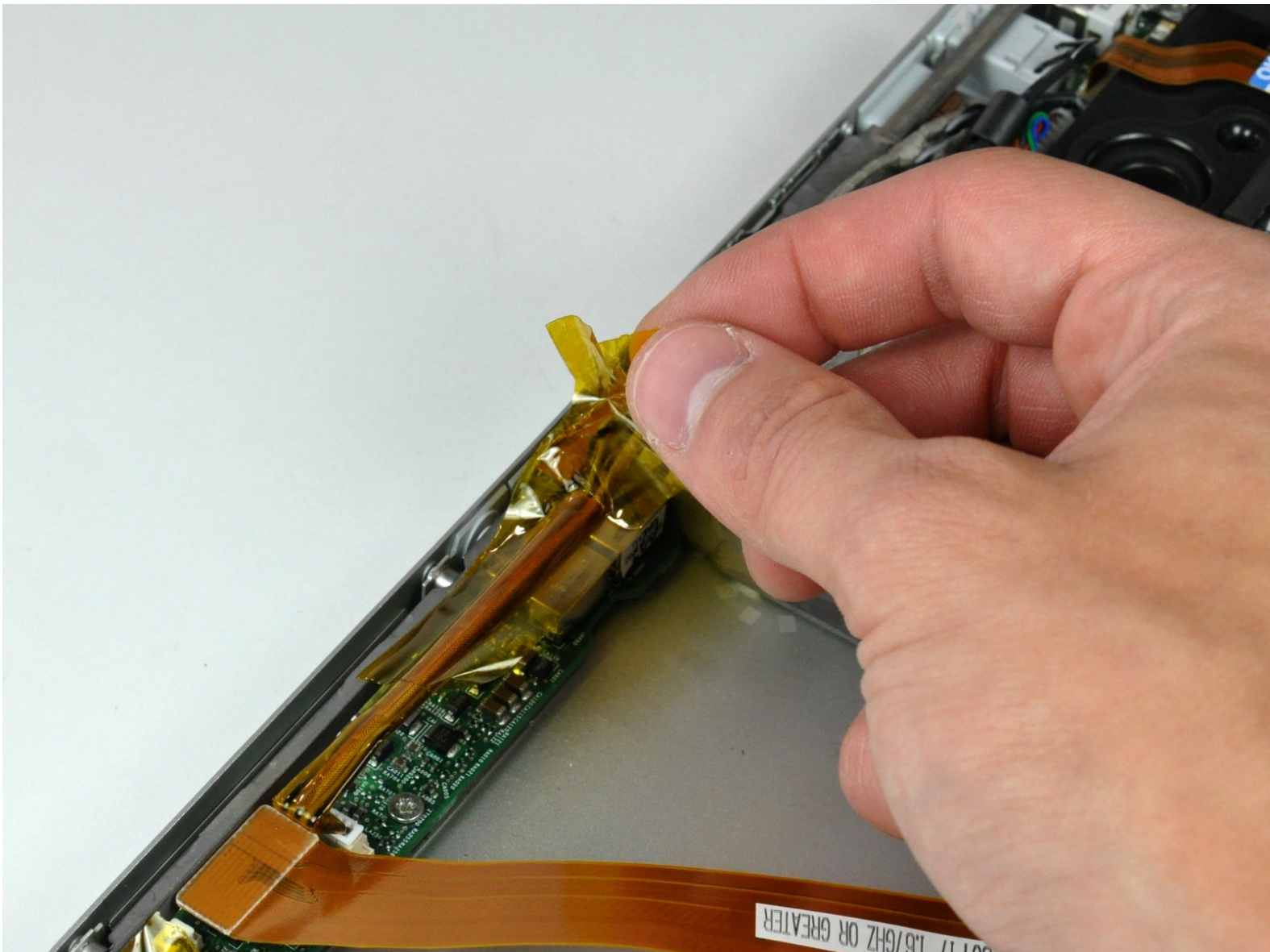




# PowerBook G4 Aluminum 17" 1.67 GHz (High-Res) Sound Card Replacement

Written By: Walter Galan



# INTRODUCTION

Replace your sound card to regain audio functionality.



## TOOLS:

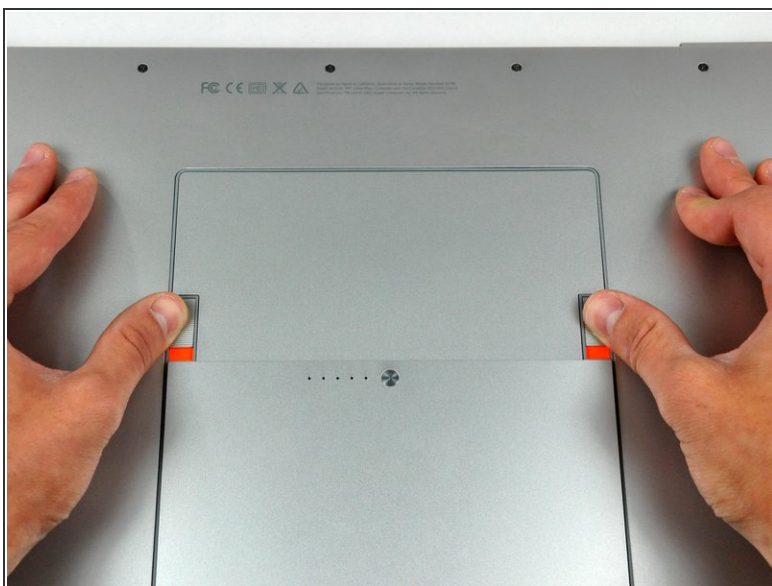
- [Phillips #00 Screwdriver](#) (1)
- [Spudger](#) (1)
- [T8 Torx Screwdriver](#) (1)



## PARTS:

- [G4 Aluminum 17" 1.67 GHz \(HR\) Sound Card](#) (1)
- [G4 Aluminum 17" 1.67 GHz \(HR\) Sound Cable](#) (1)

## Step 1 — Battery



- Use your thumbs to push the two battery retaining tabs away from the battery.
- The battery should pop up enough to rotate it toward yourself and lift it out of the lower case.

## Step 2 — Memory Door



- Remove the three 2.3 mm Phillips screws securing the memory cover to the lower case.

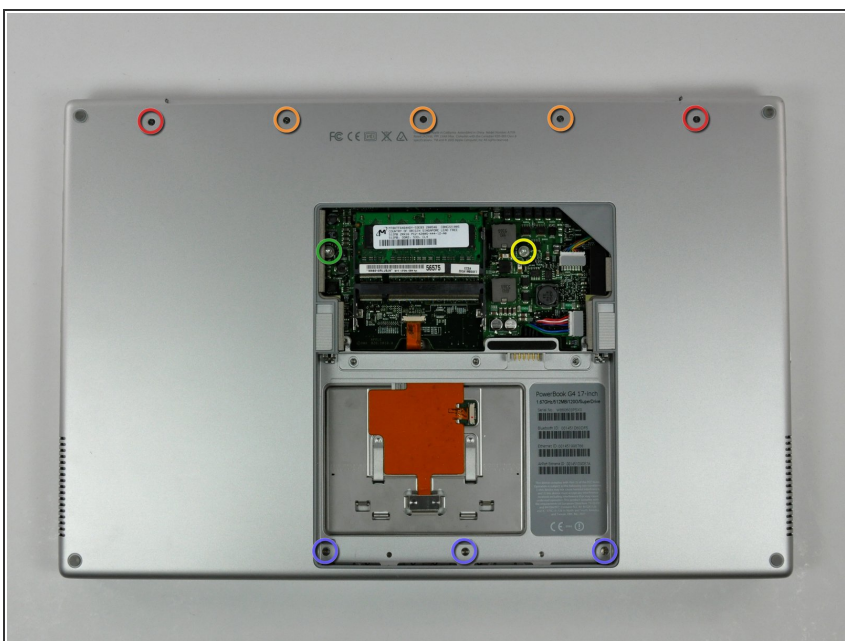


## Step 3



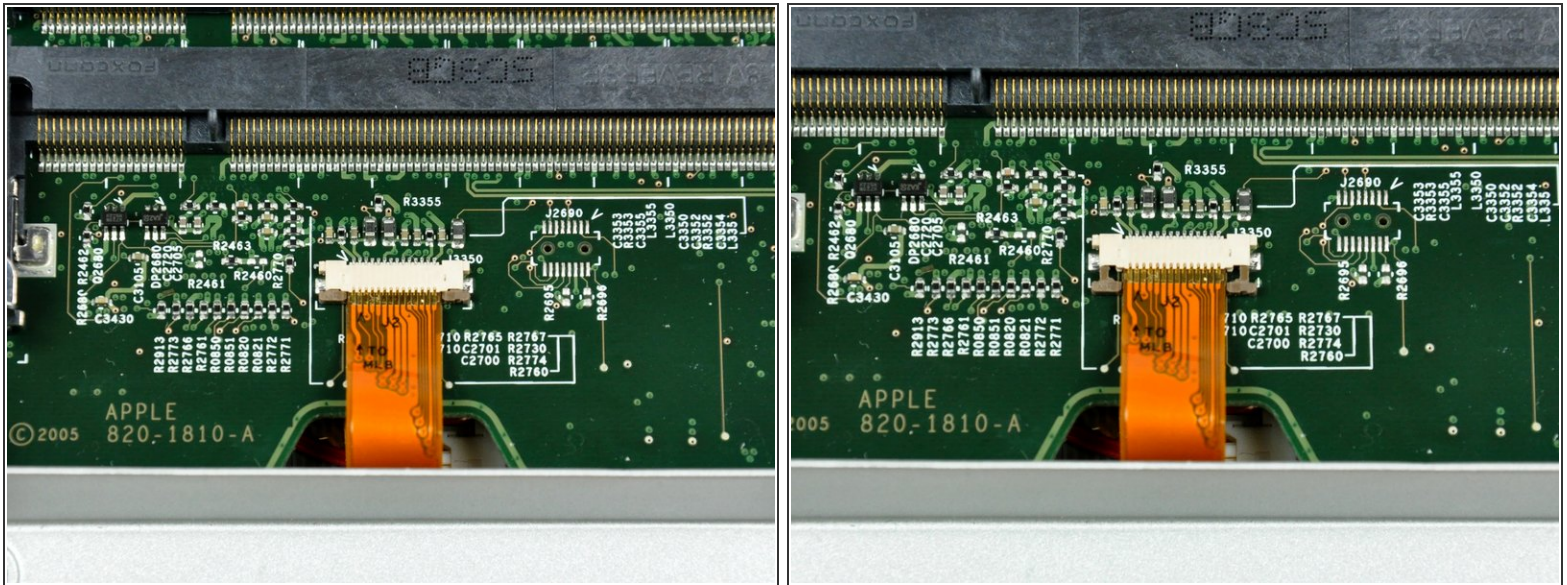
- Lift the memory cover slightly and pull it toward yourself to remove it from the lower case.



## Step 4 — Upper Case



- Remove the following ten screws:
  - Two 14.7 mm shouldered Phillips.
  - Three 12.3 mm Phillips.
  - One 3.8 mm T8 Torx.
  - One 6.8 mm T8 Torx.
  - Three 1.3 mm Phillips.

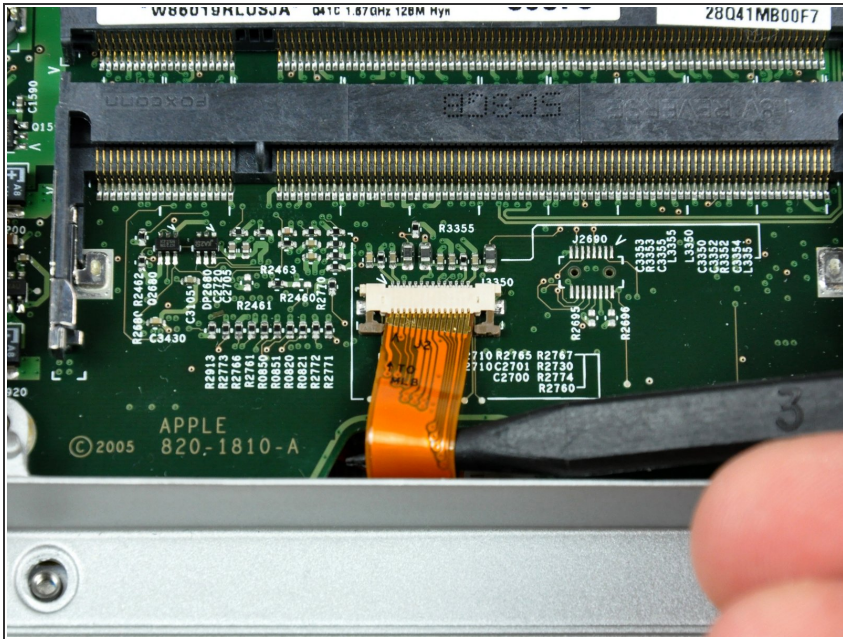
## Step 5



-  The ZIF cable is located underneath the bottom RAM slot. If your PowerBook has both RAM slots occupied, make sure to [remove](#) the RAM chip.
- Use your fingernails to separate the ZIF cable lock away from its socket. (Move the two brown bits down 1mm)
-  The ZIF cable lock will move about a millimeter away from the socket before it stops (see picture 2). **Do not** try to remove the ZIF cable lock.




## Step 6



- Use the tip of a spudger to slide the trackpad ribbon cable out of its socket.

## Step 7



- Remove the four 3.4 mm Phillips screws from the PC card side of the PowerBook.
-  When replacing these screws, you must reinstall each screw in the correct order. Begin by installing the screw closest to the display hinge, and go out from there.

## Step 8



- Remove the four 3.4 mm Phillips screws from the DVI connector side of the PowerBook.
- ★ When replacing these screws, you must reinstall each screw in the correct order. Begin by installing the screw closest to the display hinge, and go out from there.
- ⓘ During reassembly, make sure to reinstall the two screws on the right into their appropriate locations, and not the DVI port anchor holes.

## Step 9



- Depress the display latch release button and open your display.

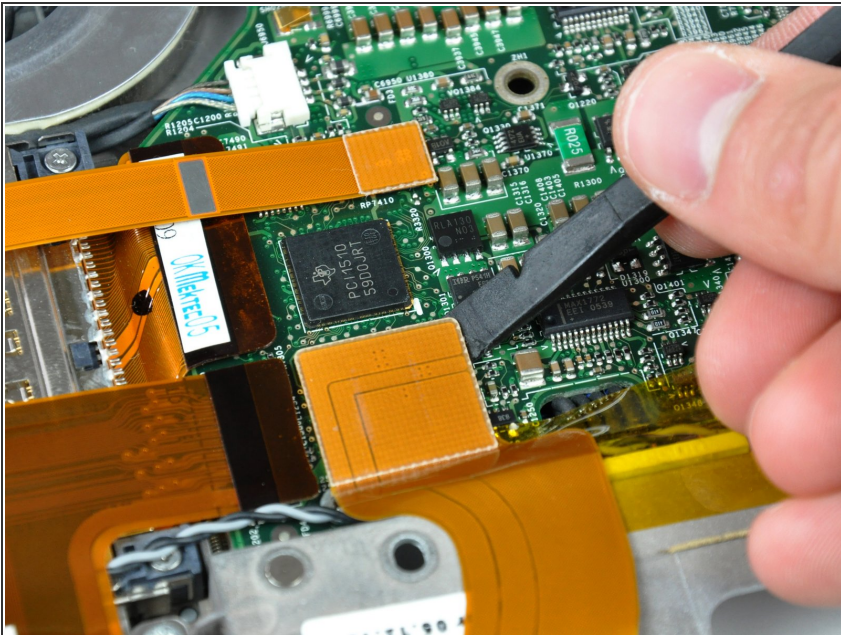


## Step 10



- Starting near the display, lift the upper case straight up off the lower case, minding any cables that may get caught.

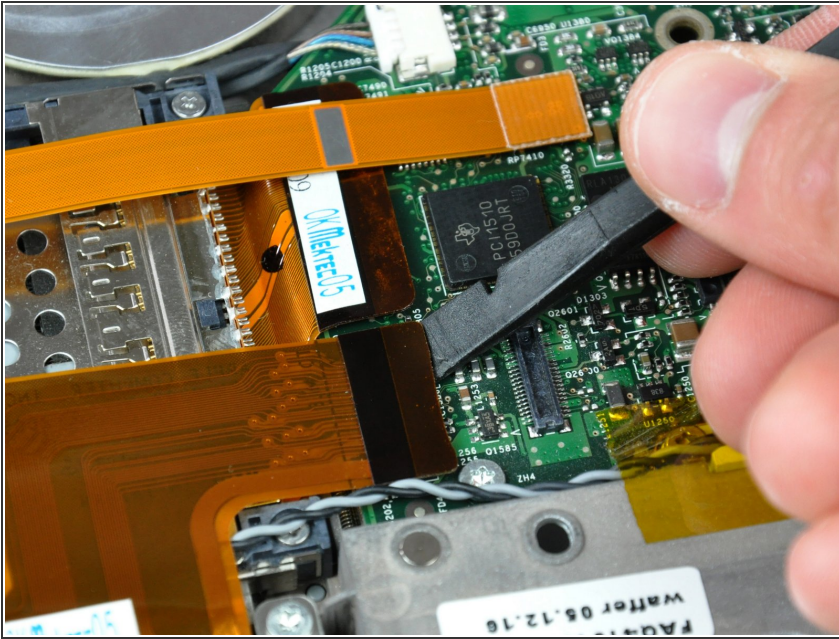
## Step 11 — Hard Drive



- Use the flat end of a spudger to pry the sound card ribbon cable connector up off the logic board.
- Move the sound card ribbon cable away from the face of the hard drive.
- ⓘ It is not necessary to disconnect the sound card ribbon cable from the sound card.



## Step 12



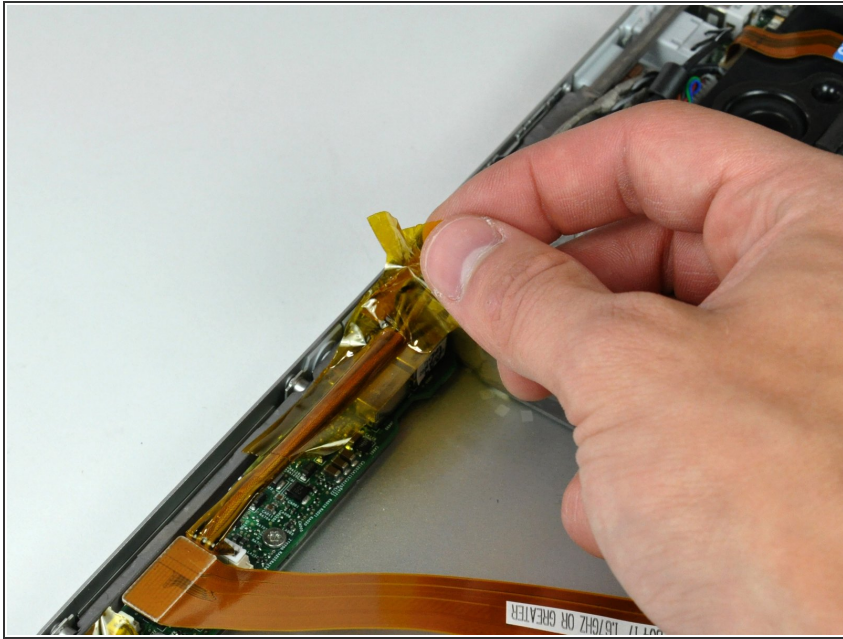
- Use the flat end of a spudger to pry the hard drive ribbon cable connector up off the logic board.

## Step 13



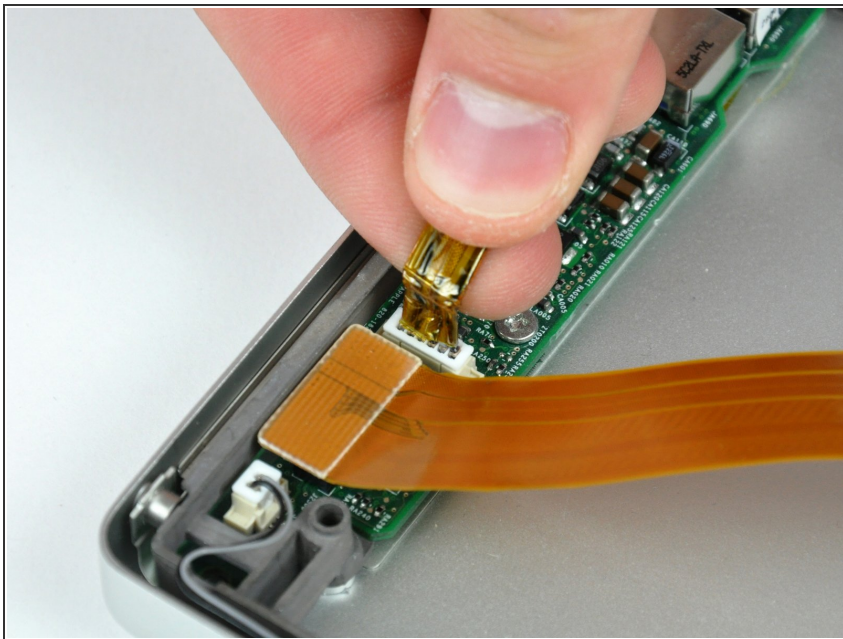
- Remove the following four screws:
  - Three 11.1 mm T8 Torx.
  - One 3.9 mm T8 Torx.
- Lift the hard drive out of the lower case.

## Step 14 — Sound Card



- If necessary, remove the strip of tape covering the speaker cable.

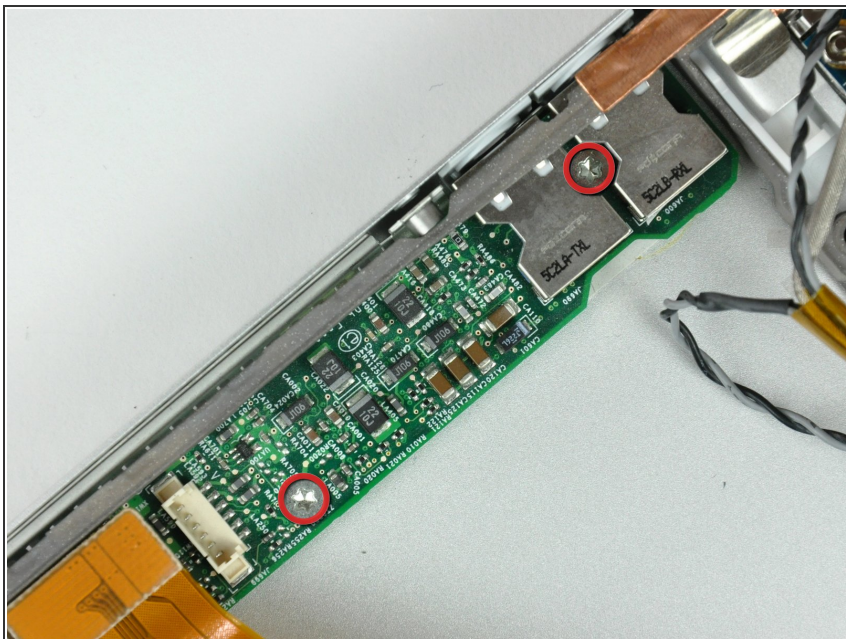
## Step 15



- Pull the speaker cable connector straight up to disconnect it from the sound card.



## Step 16



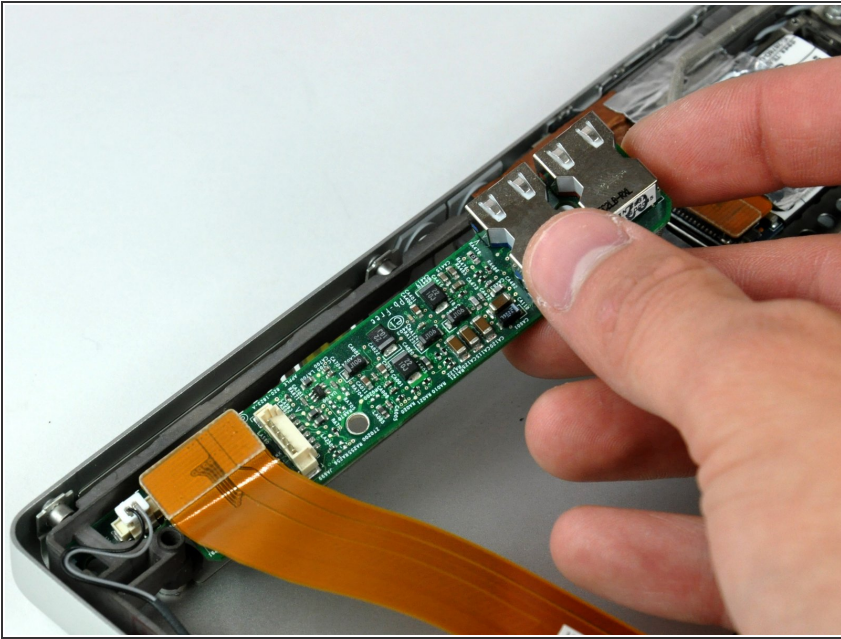
- Remove the two T8 Torx screws securing the sound card to the lower case.

## Step 17



- Use the flat end of a spudger to pry the USB sockets away from the left edge of the lower case.

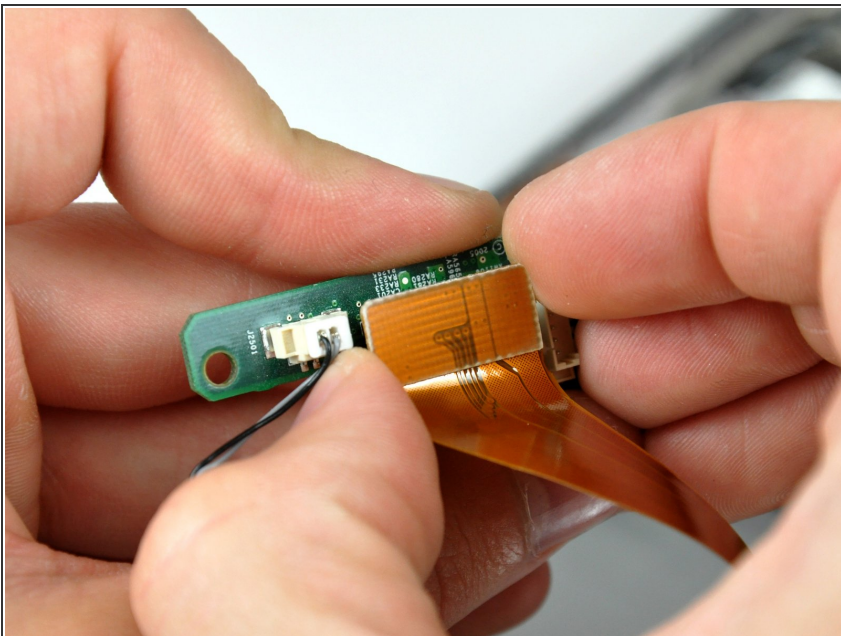
## Step 18



- Lift the sound card slightly out of the lower case, minding the fragile lower portion holding the microphone connector.

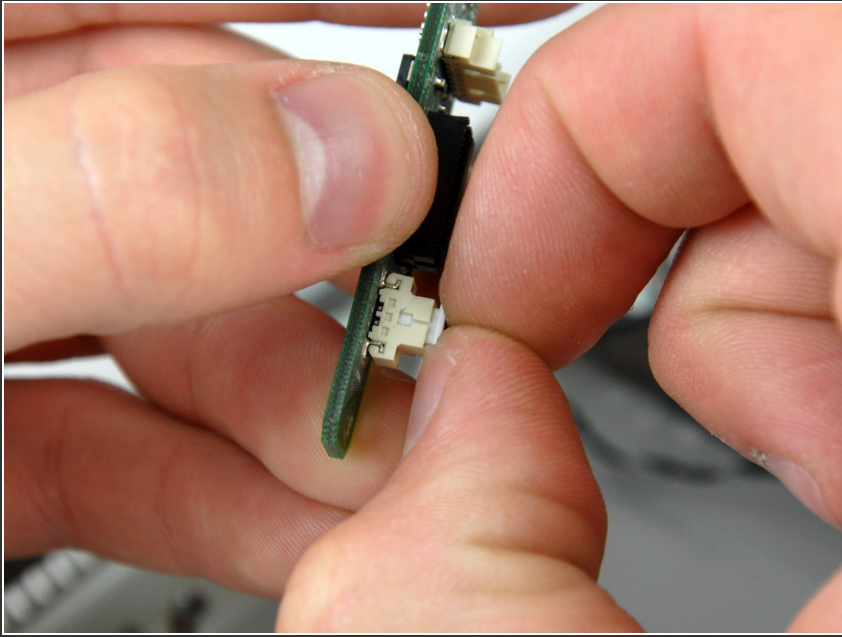
⚠ The sound card is still attached to the PowerBook by the microphone cable.

## Step 19



- Pull the sound card ribbon cable straight away from its socket on the sound card.

## Step 20



- Use your fingernails to pull the microphone connector straight away from its socket on the sound card.

To reassemble your device, follow these instructions in reverse order.