



PowerLead Puto PLD003 Back Buttons Replacement

This guide will show you how to replace buttons on the back of the camera.

Written By: Justin Tew



INTRODUCTION

This guide shows how to remove the screws that hold the camera together, how to remove the side panel from the camera, how to remove the back panel, and how to replace the back buttons.



TOOLS:

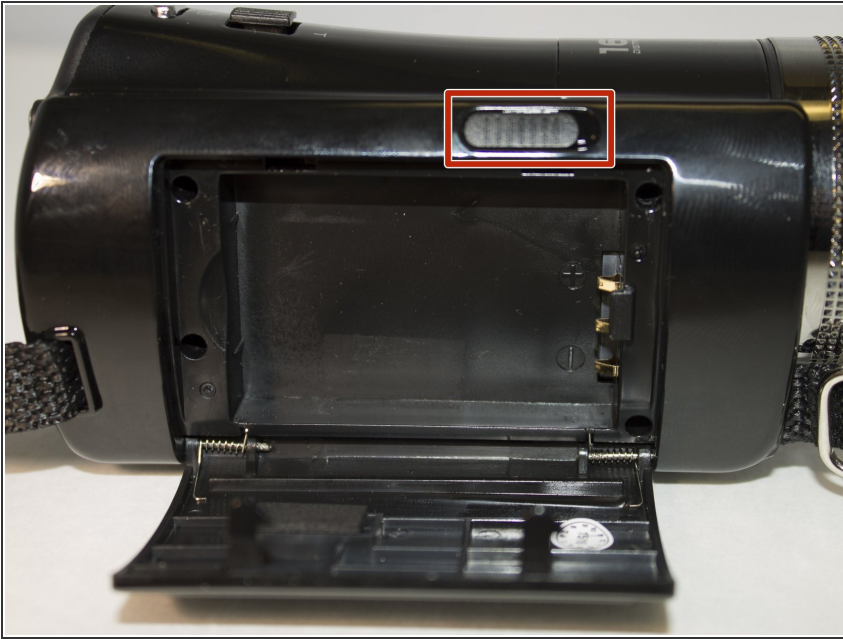
- [Phillips #1 Screwdriver](#) (1)



PARTS:

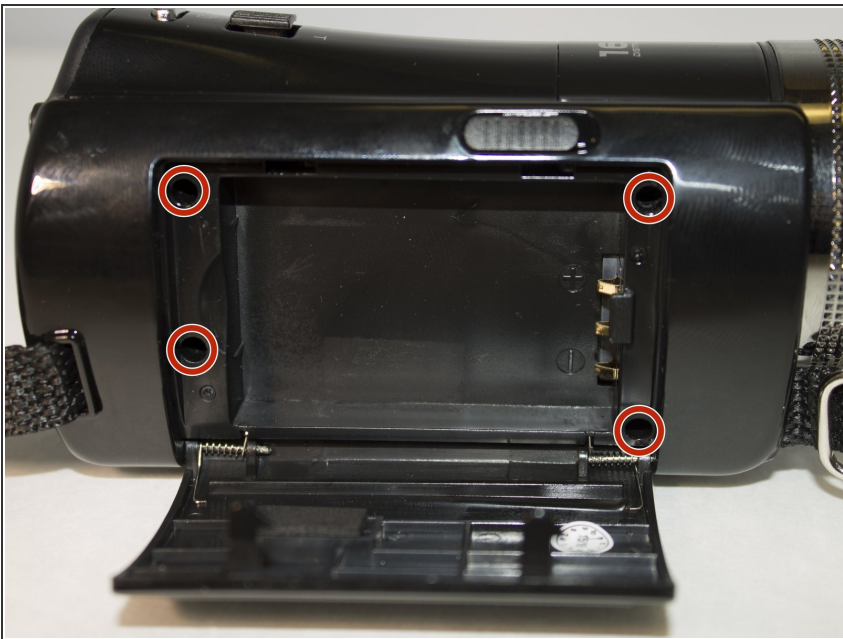
- [Replacement Button\(s\)](#) (1)

Step 1 — Side Panel



- Slide the battery eject button to open the battery door.

Step 2



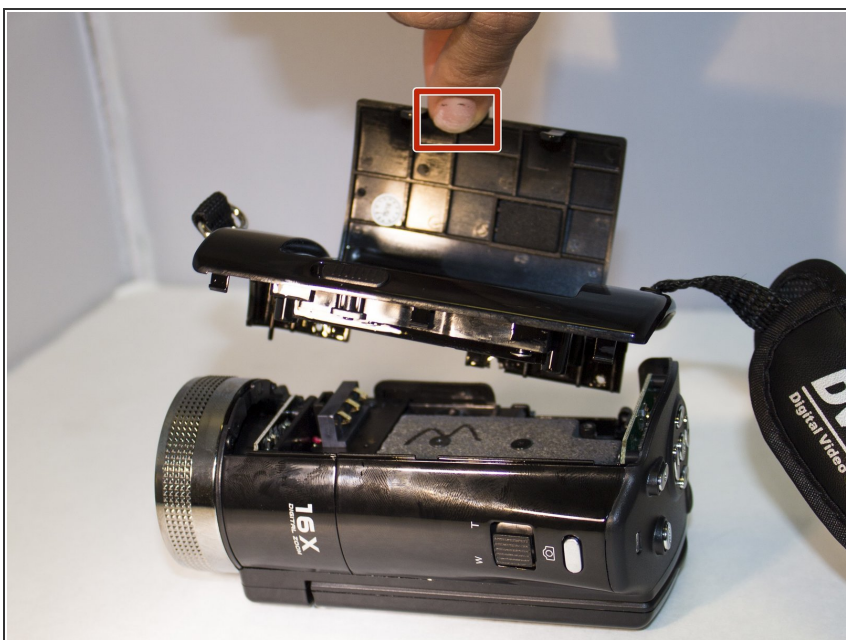
- With the battery door open, carefully unscrew all four 5mm Phillips #1 screws.

Step 3



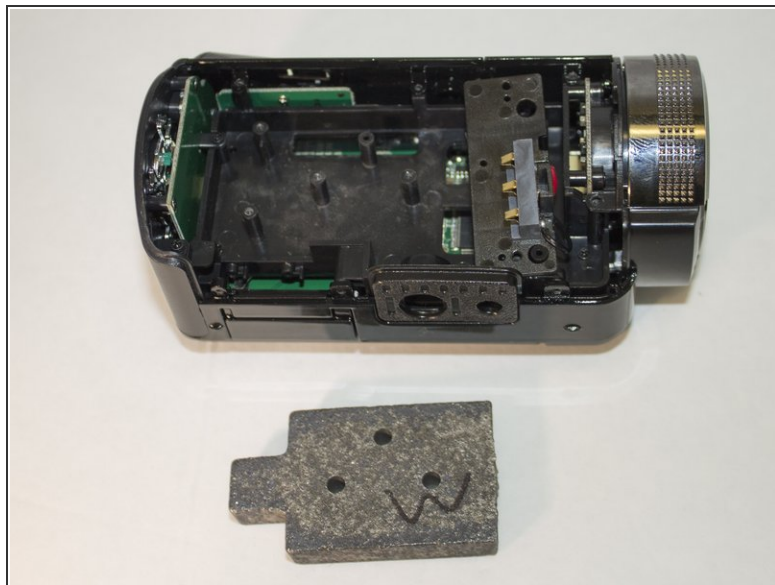
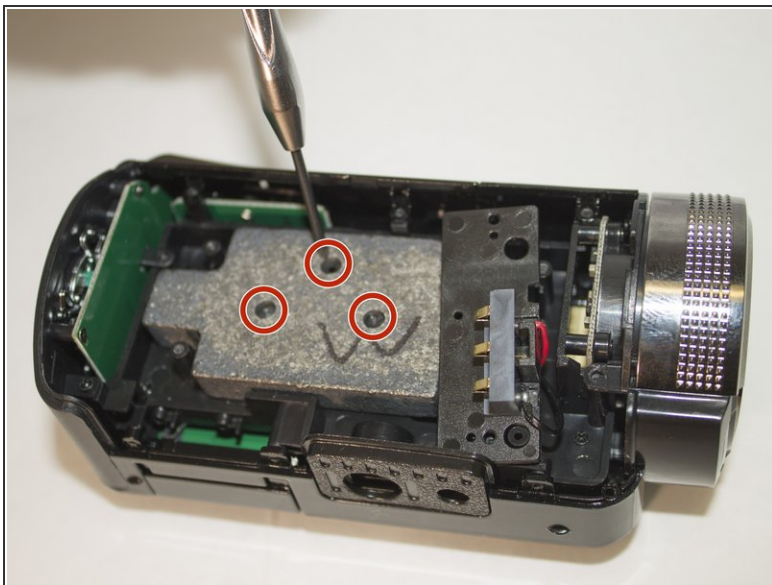
- Place the camera so that the underside is facing up.
- Remove the four 5mm Phillips #1 screws.

Step 4



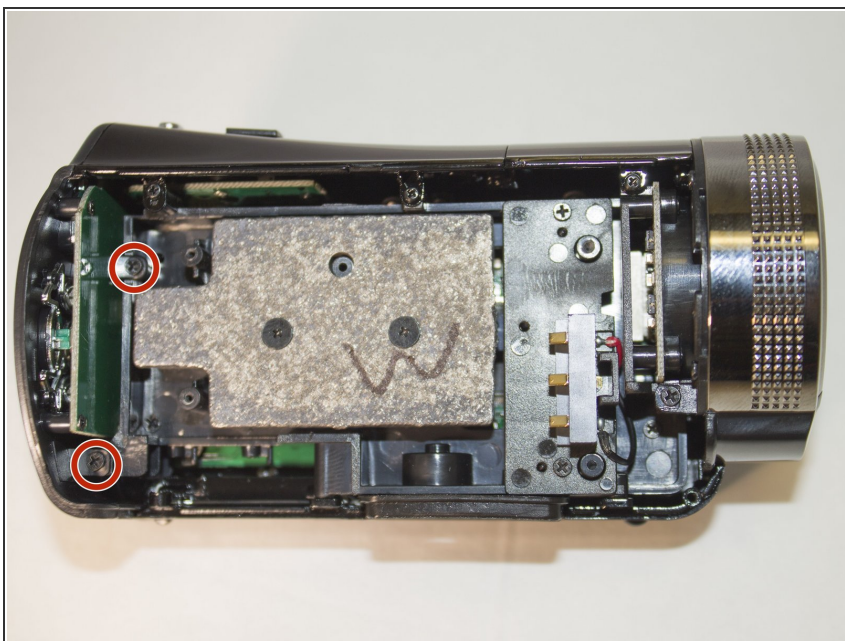
- Place the camera on a flat surface with its underside facing you.
- Gently pull up on the side panel to remove it from the camera.

Step 5 — Back Buttons



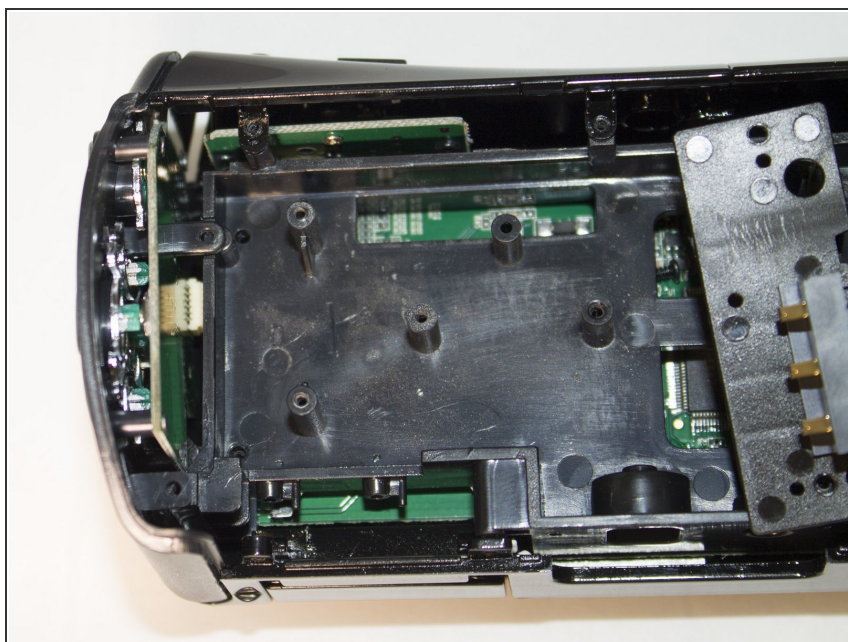
- Remove the three 4 mm Phillips #1 screws holding the weight.
- Remove the weight.

Step 6



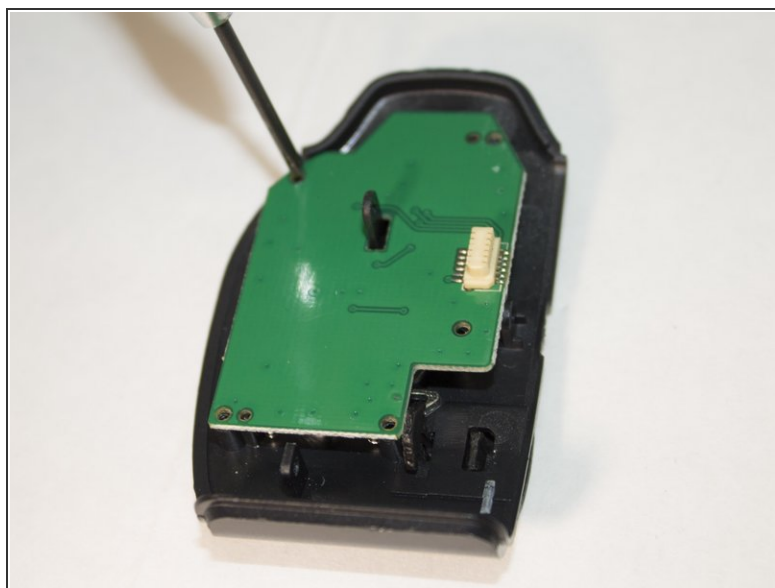
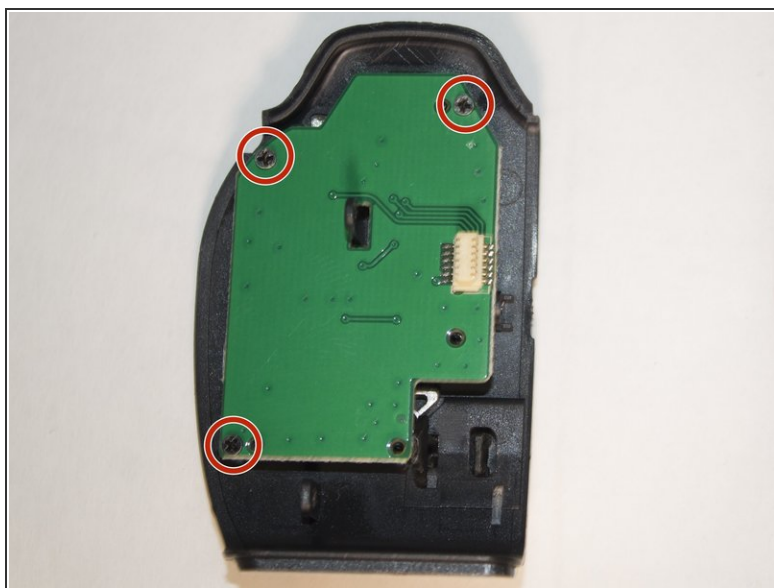
- Remove the two 4 mm Phillips #1 screws holding the back panel in place.

Step 7



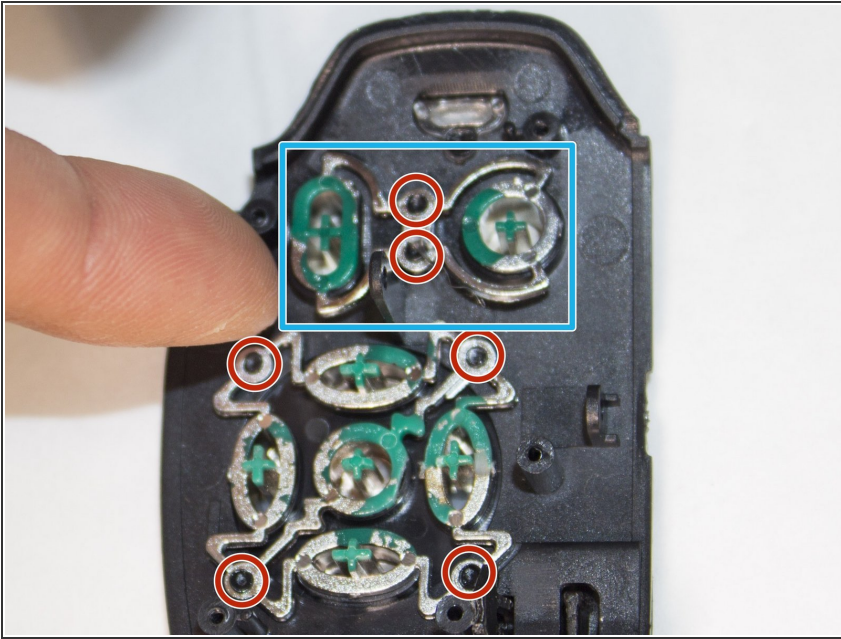
- Apply pressure to the back panel, away from the camera to remove.

Step 8



- Place the back panel so the buttons are facing down and the circuit board is facing up.
- Remove the three 4 mm Phillips #1 screws holding the circuit board in place.

Step 9



- Set aside the circuit board.
- These nubs are what is currently holding the buttons in place.
- Carefully apply pressure and remove the set of buttons from the nubs.

To reassemble your device, follow these instructions in reverse order.