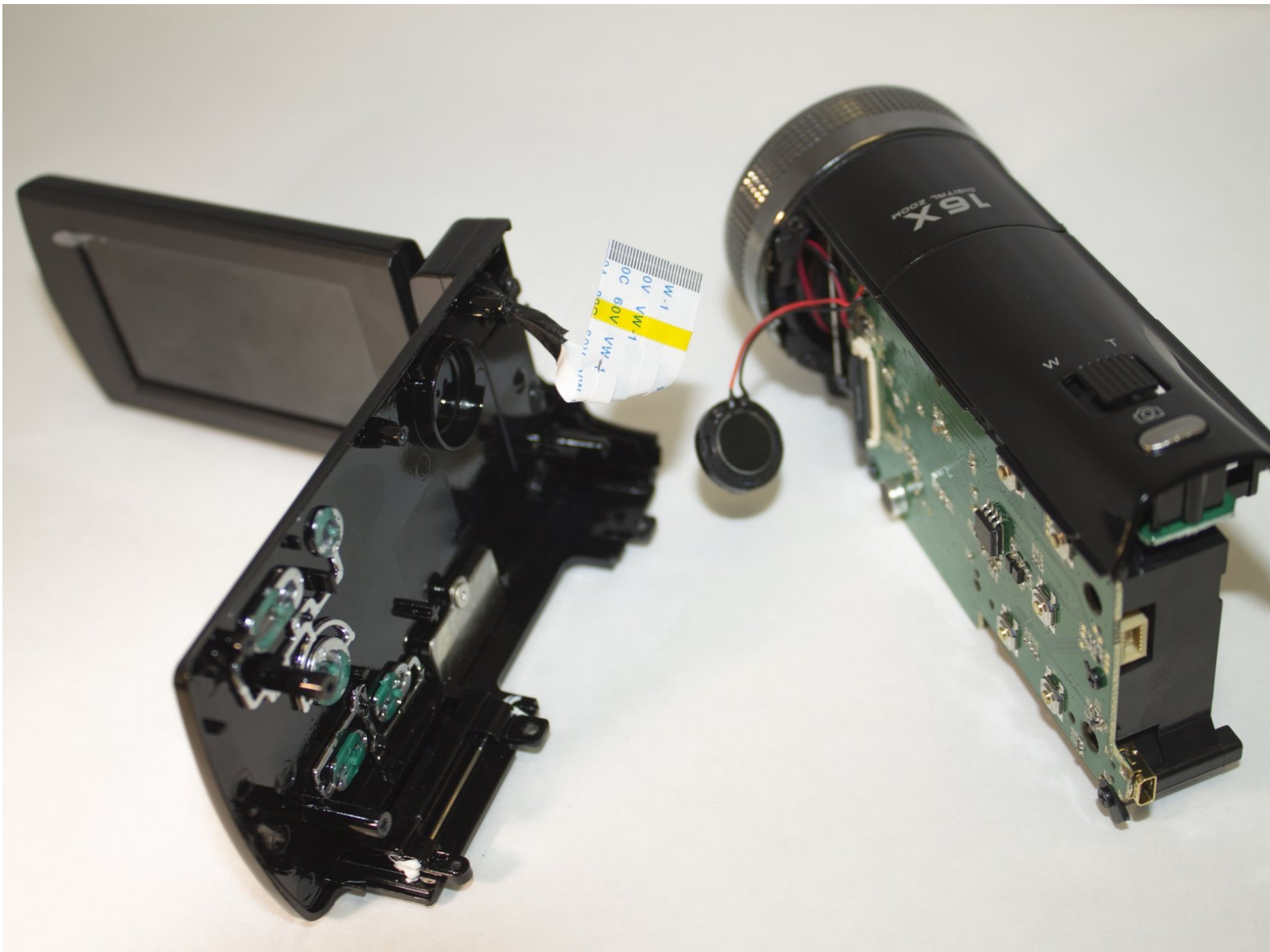




PowerLead Puto PLD003 Screen Replacement

This guide shows you how to replace the PowerLead Puto PLD003 LCD screen.

Written By: Justin Tew



INTRODUCTION

This guide shows how to remove the side panel from the camera, how to remove the back panel, and how to replace the LCD screen.



TOOLS:

- [Phillips #1 Screwdriver](#) (1)



PARTS:

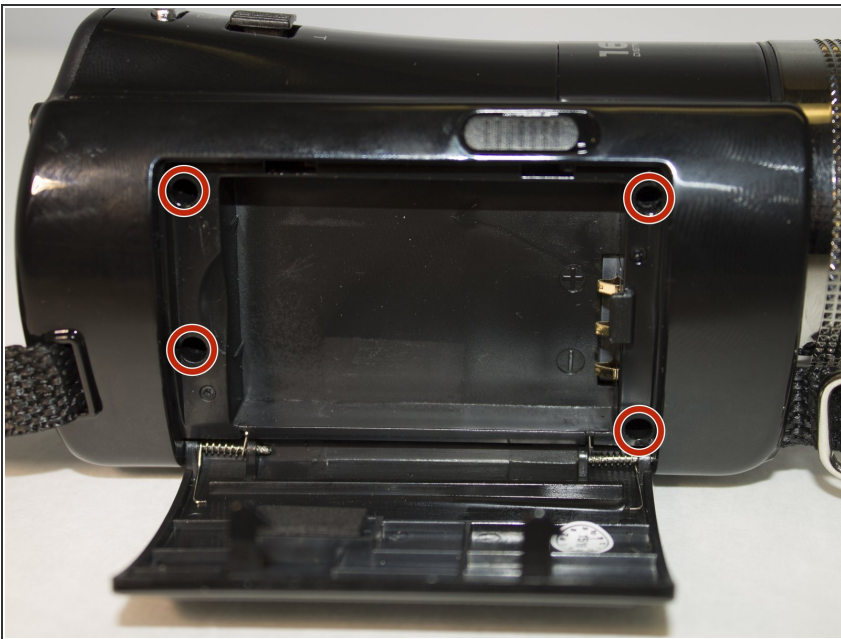
- [replacement LCD screen](#) (1)

Step 1 — Side Panel



- Slide the battery eject button to open the battery door.

Step 2



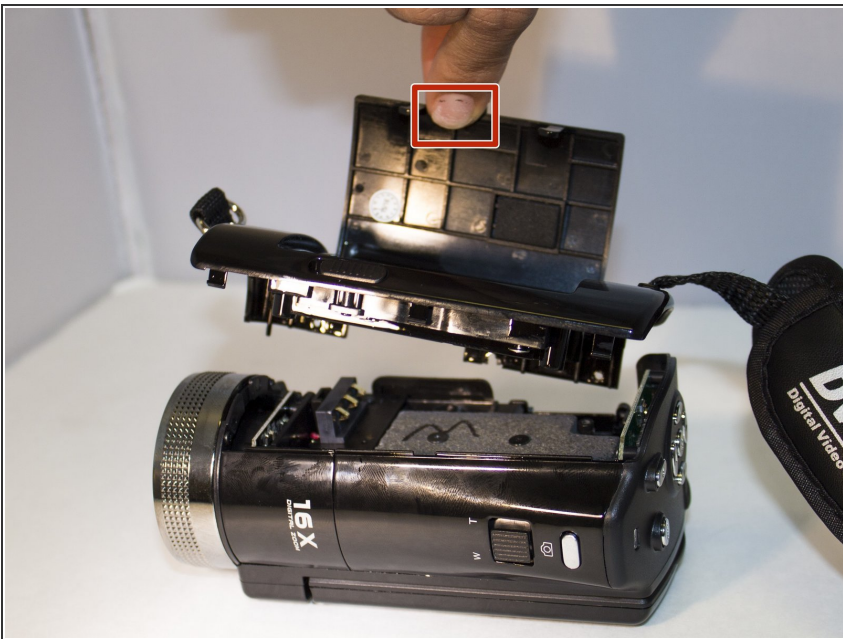
- With the battery door open, carefully unscrew all four 5mm Phillips #1 screws.

Step 3



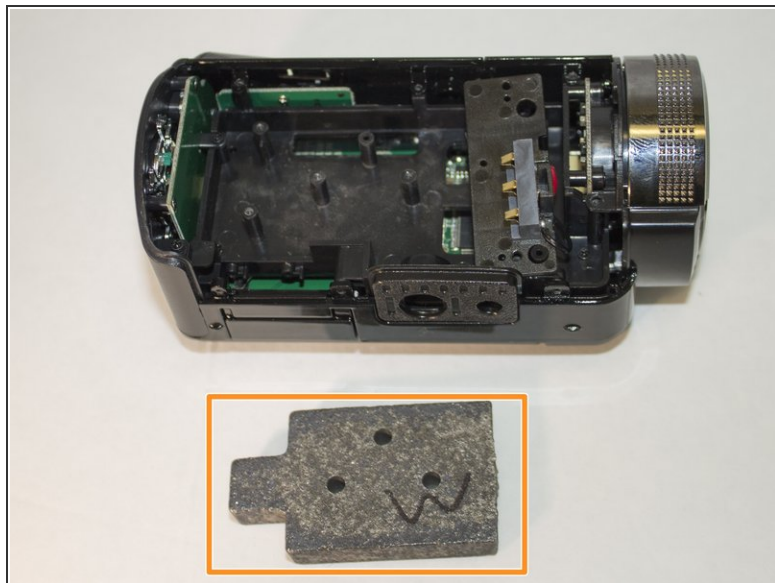
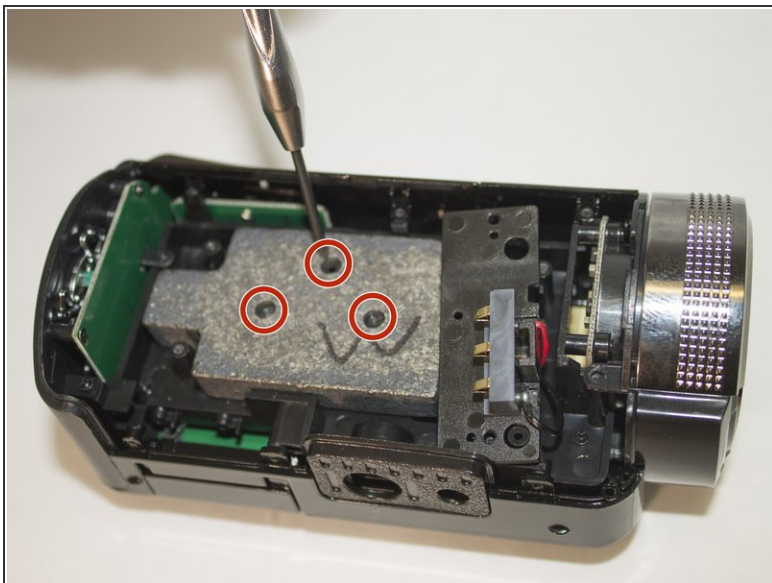
- Place the camera so that the underside is facing up.
- Remove the four 5mm Phillips #1 screws.

Step 4



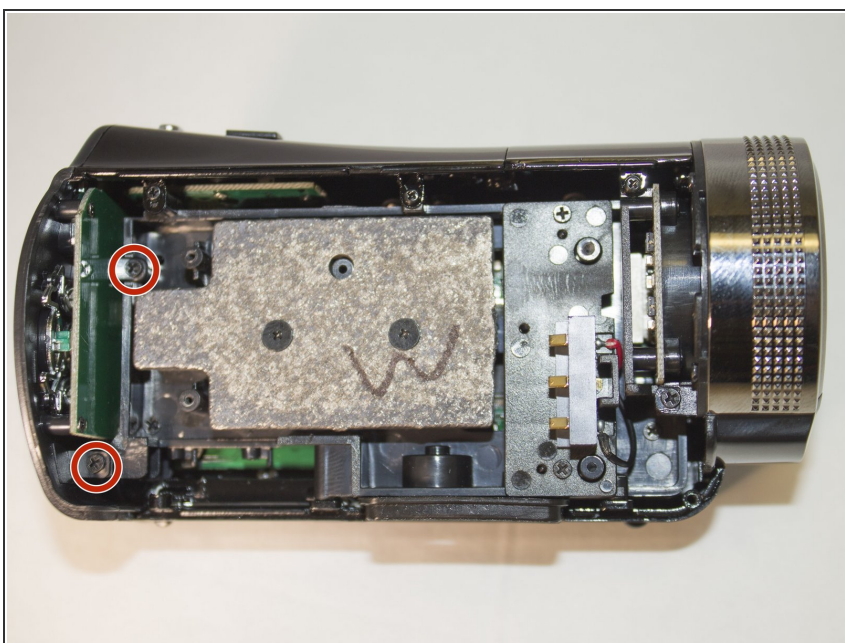
- Place the camera on a flat surface with its underside facing you.
- Gently pull up on the side panel to remove it from the camera.

Step 5 — Screen



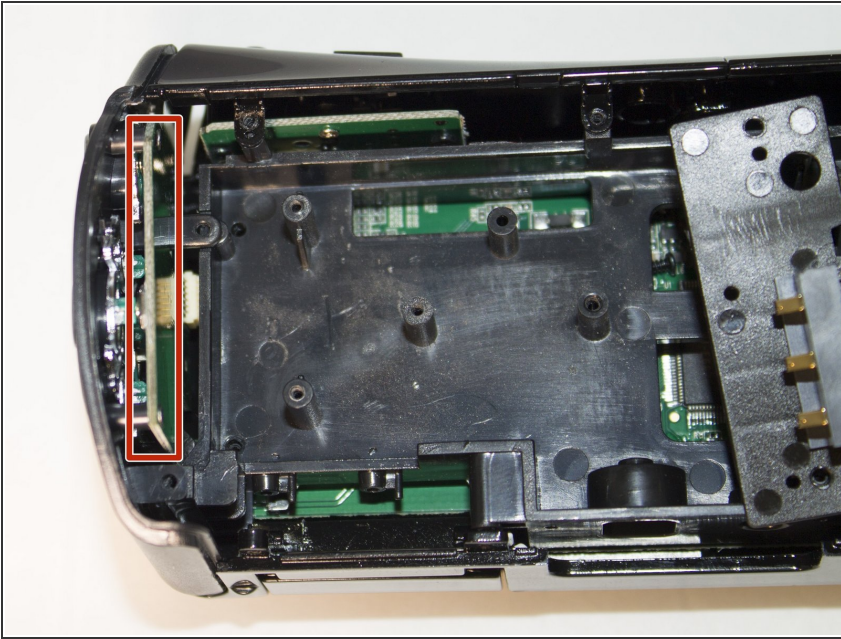
- Remove the three 4 mm Phillips #1 screws holding the weight.
- Remove the weight.

Step 6



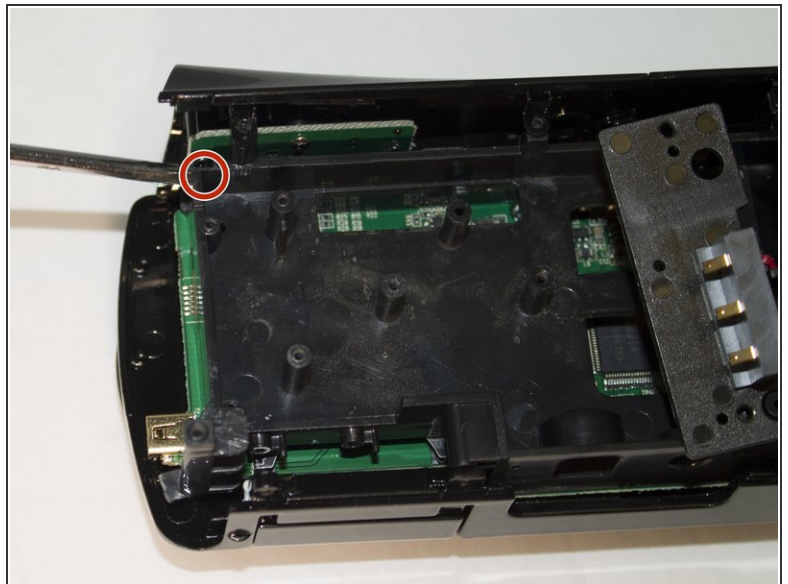
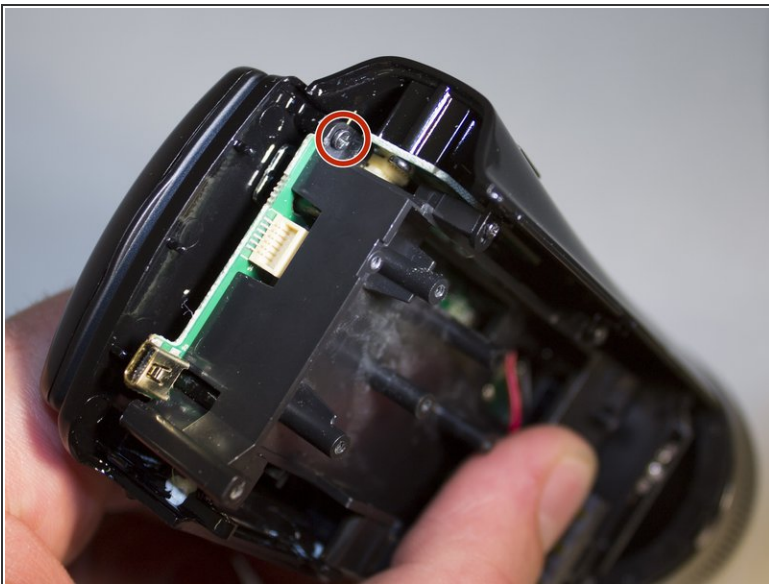
- Remove the two 4 mm Phillips #1 screws holding the back panel in place.

Step 7



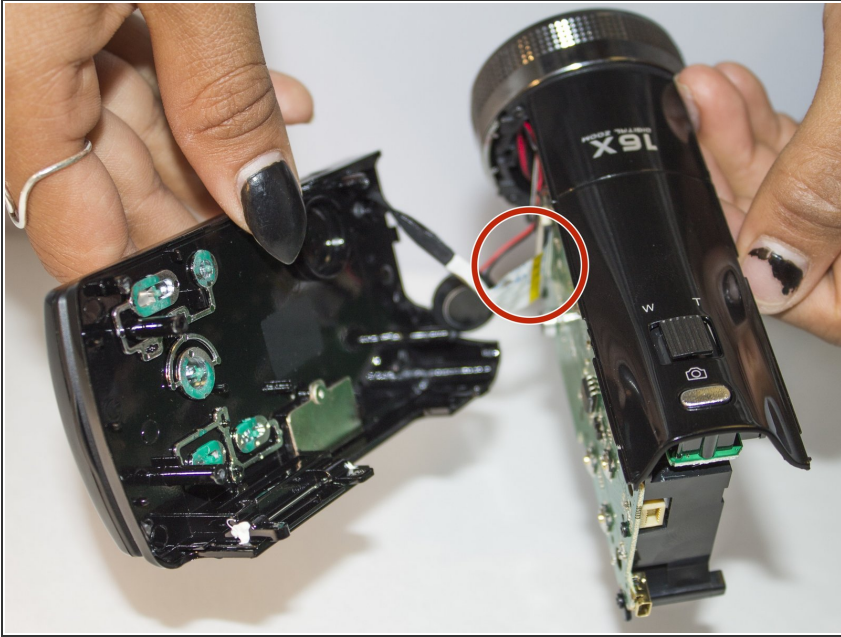
- Remove the back panel away from the camera by applying pressure to it.

Step 8



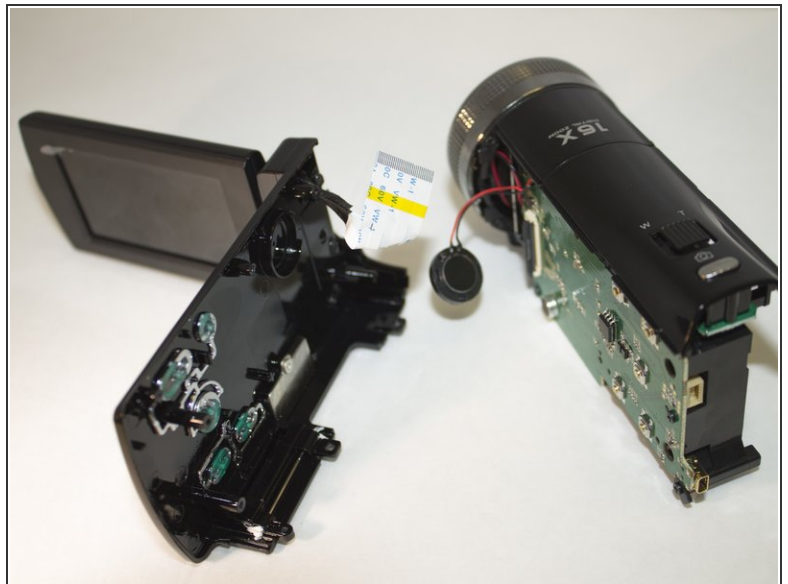
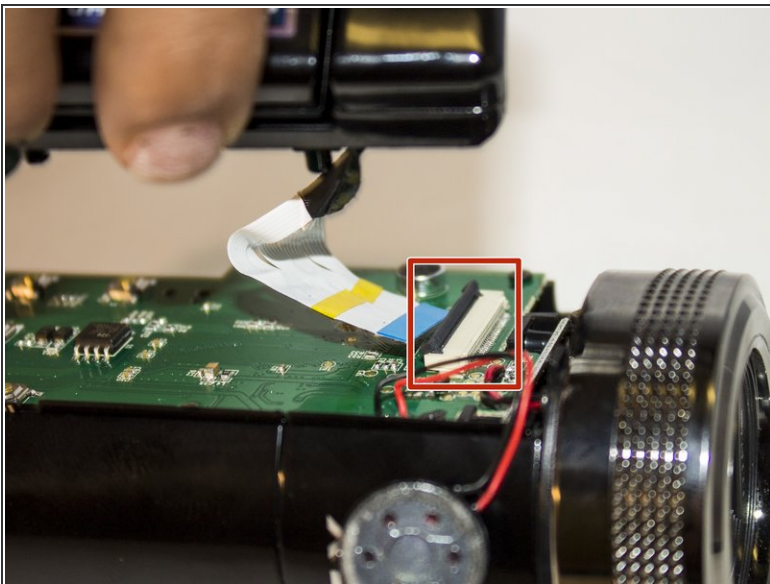
- Set aside back panel for now.
- Remove the final 4 mm Phillips #1 screw holding the screen in place. It is very small and hard to see.

Step 9



- Carefully apply pressure, away from the camera, to the screen to detach it from the body.
- The white cord should still be connected to the body.

Step 10



- Lift the black clip upward.
- With the clip up, pull the white cord to the left. This will detach the screen from the body.

To reassemble your device, follow these instructions in reverse order.