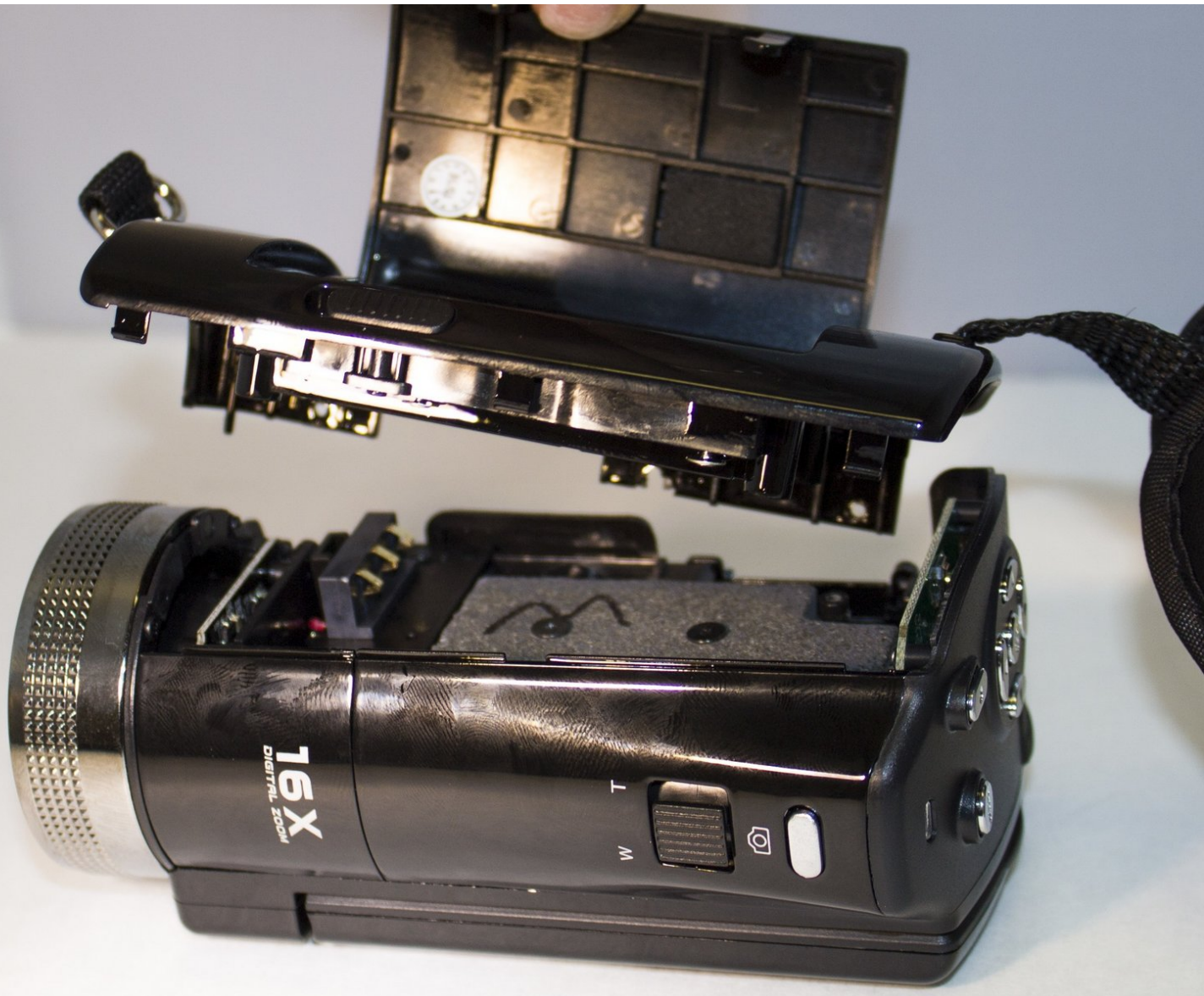




# PowerLead Puto PLD003 Side Panel Replacement

This guide will show you how to remove the PowerLead Puto PLD003 side panel.

Written By: Justin Tew



---

## INTRODUCTION

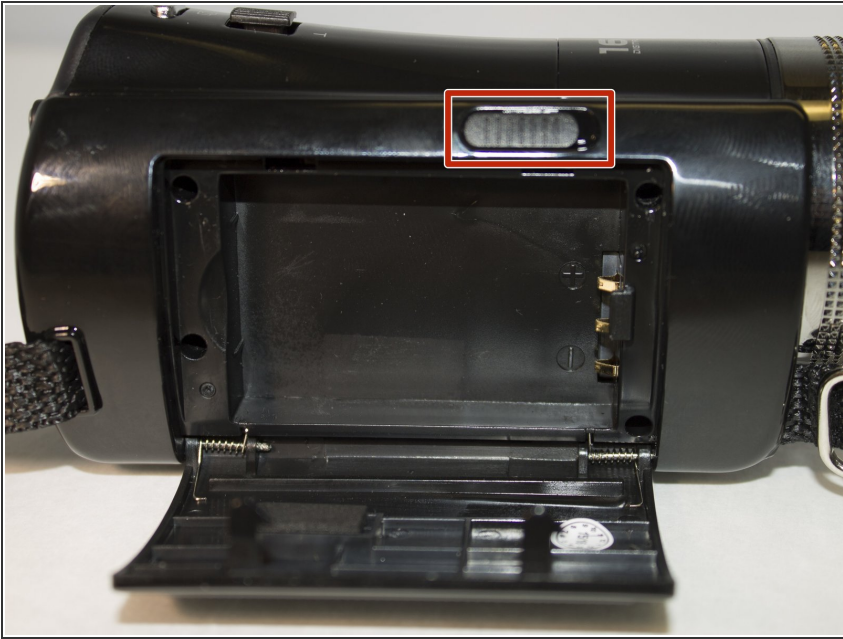
This guide will show you how to remove the PowerLead Puto PLD003 side panel. Removing the side panel is necessary in order to replace most parts.



### TOOLS:

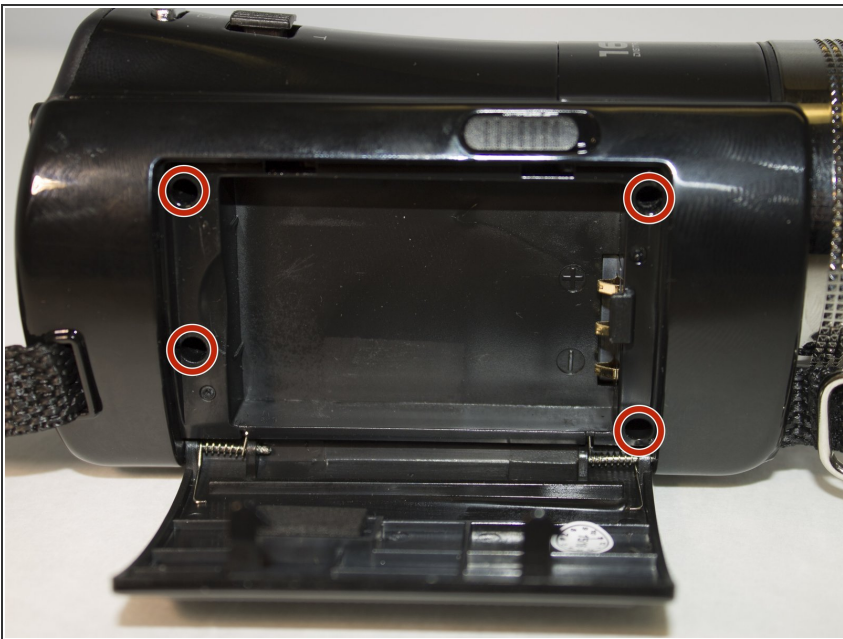
- [Phillips #1 Screwdriver](#) (1)
-

## Step 1 — Side Panel



- Slide the battery eject button to open the battery door.

## Step 2



- With the battery door open, carefully unscrew all four 5mm Phillips #1 screws.

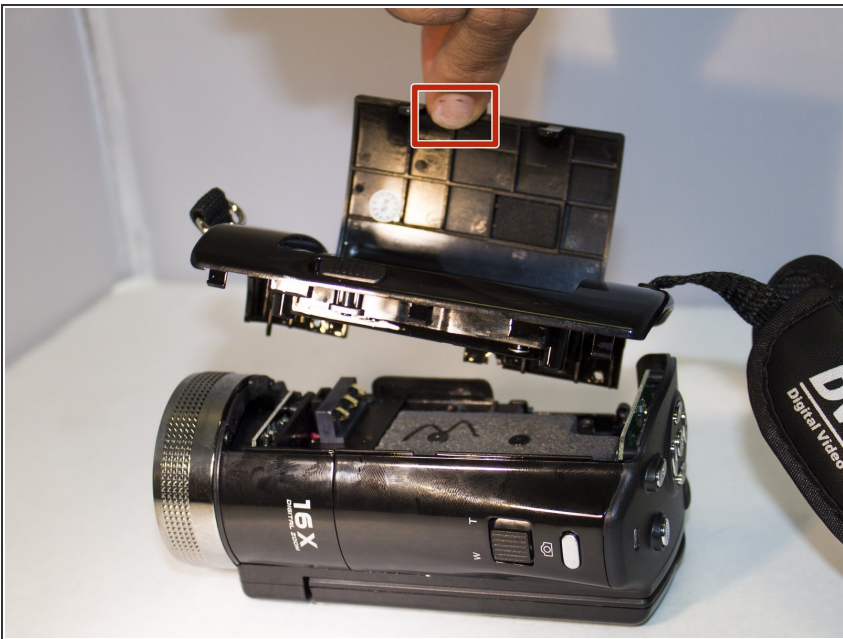


### Step 3



- Place the camera so that the underside is facing up.
- Remove the four 5mm Phillips #1 screws.

### Step 4



- Place the camera on a flat surface with its underside facing you.
- Gently pull up on the side panel to remove it from the camera.

To reassemble your device, follow these instructions in reverse order.