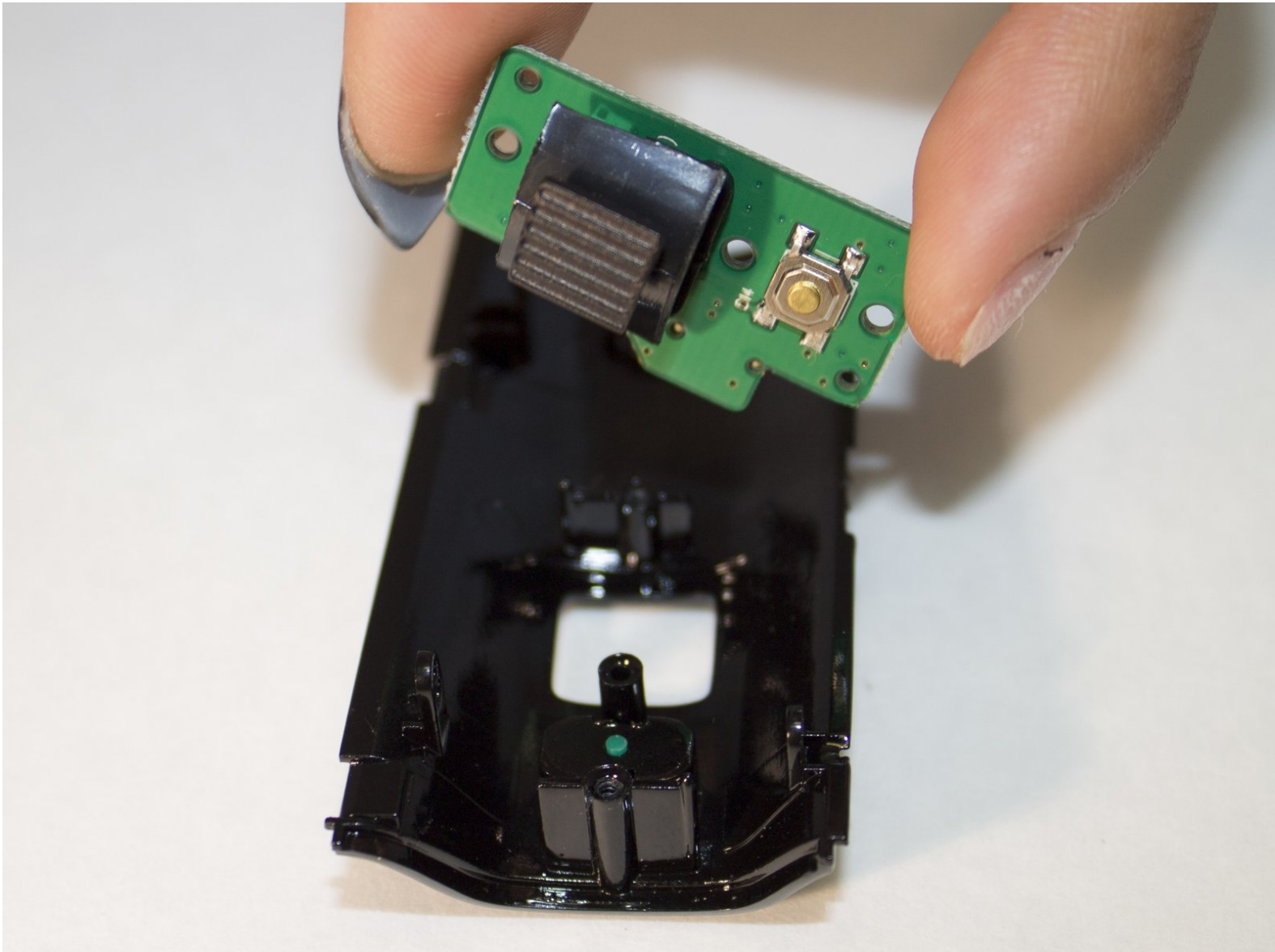




# PowerLead Puto PLD003 Zoom Button Replacement

This guide will show you how to replace the zoom button.

Written By: Justin Tew



## INTRODUCTION

This guide shows how to remove the side panel from the camera, how to remove the back panel, and how to replace the zoom button.



### TOOLS:

- [Phillips #1 Screwdriver](#) (1)



### PARTS:

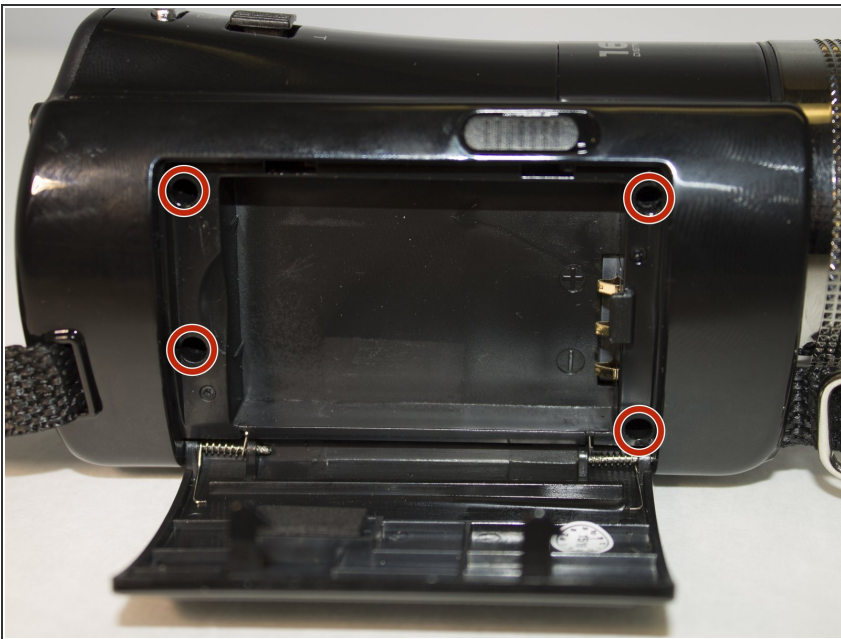
- [Replacement Zoom Button](#) (1)

## Step 1 — Side Panel



- Slide the battery eject button to open the battery door.

## Step 2



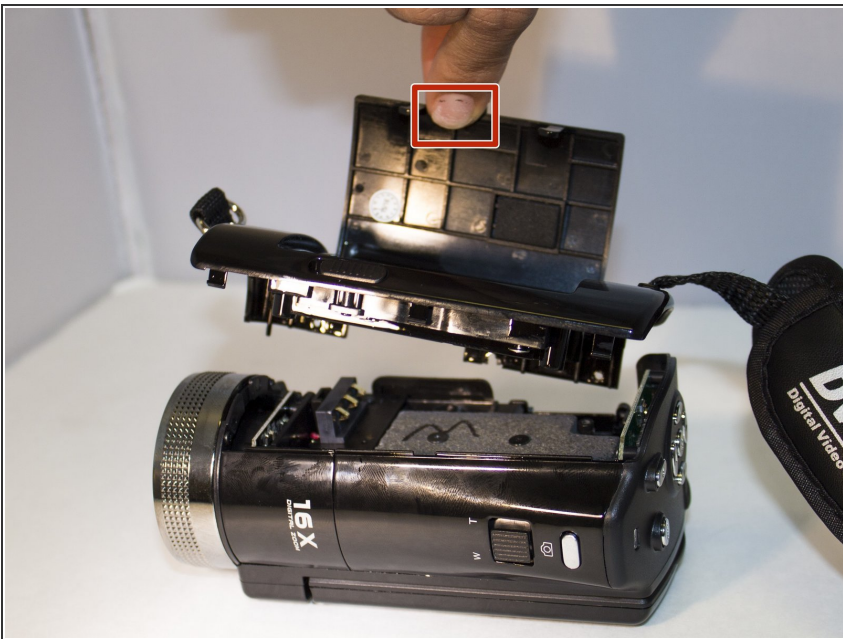
- With the battery door open, carefully unscrew all four 5mm Phillips #1 screws.

### Step 3



- Place the camera so that the underside is facing up.
- Remove the four 5mm Phillips #1 screws.

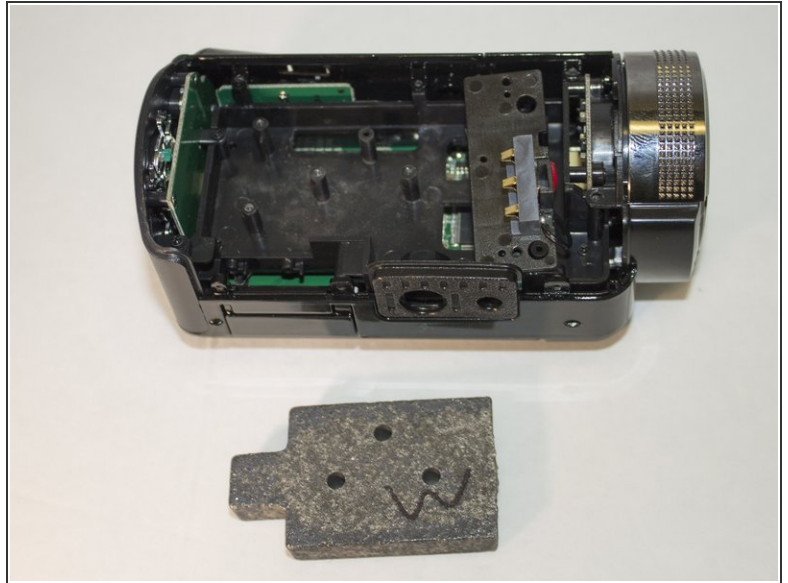
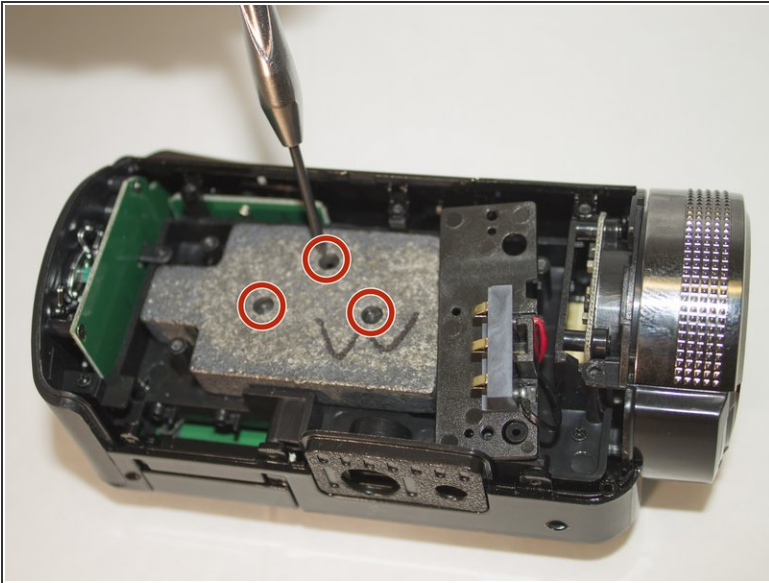
### Step 4



- Place the camera on a flat surface with its underside facing you.
- Gently pull up on the side panel to remove it from the camera.

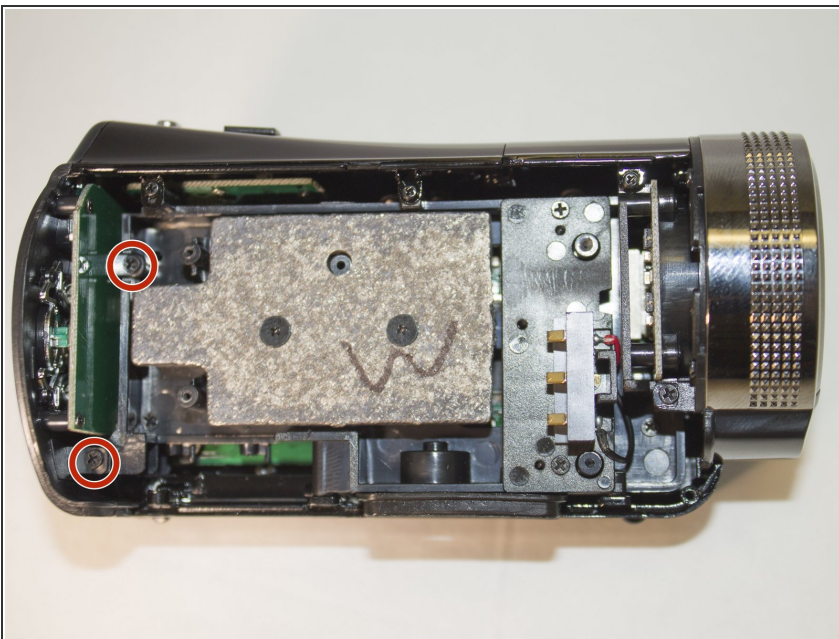


## Step 5 — Zoom Button



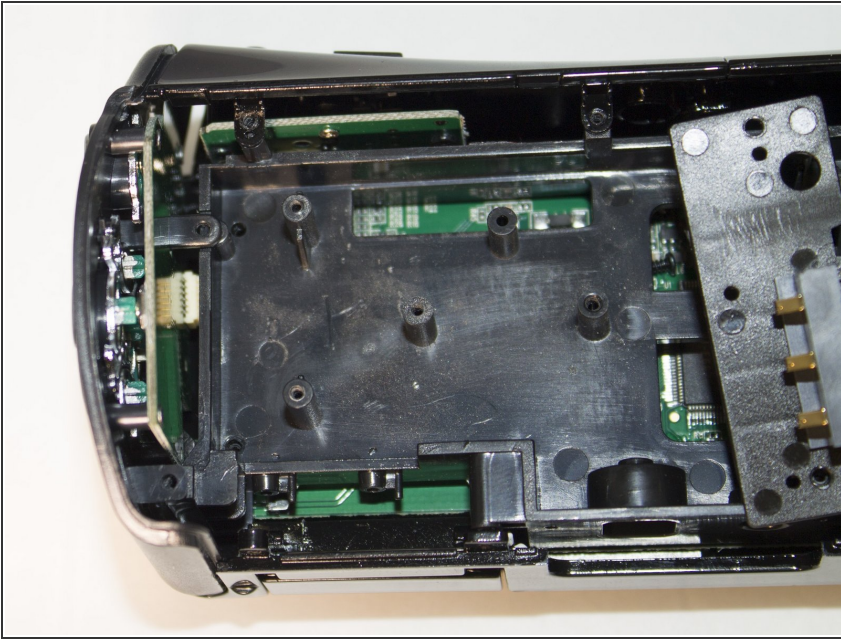
- Remove the 4 mm Phillips #1 screws holding the weight.
- Remove the weight.

## Step 6



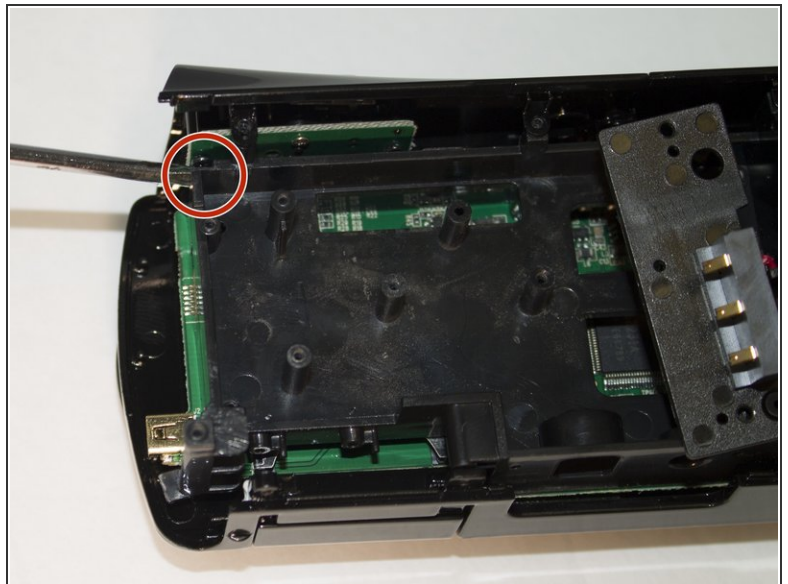
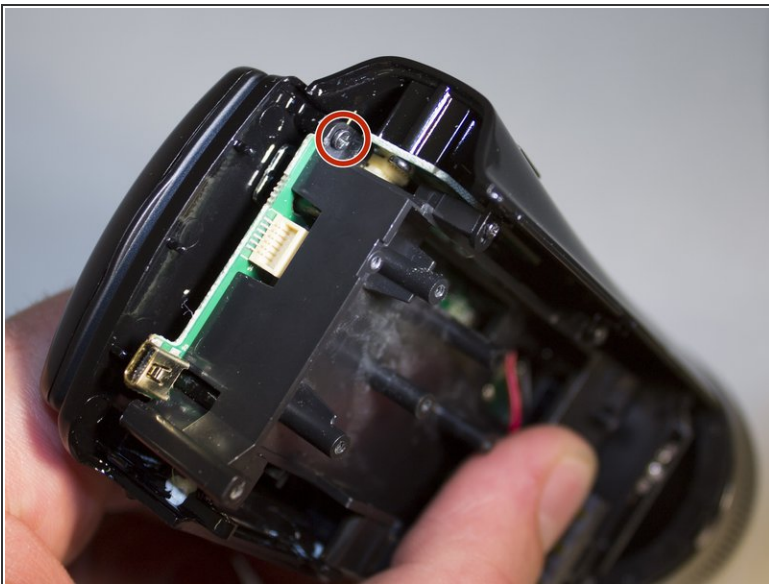
- Remove the two 4 mm Phillips #1 screws holding the back panel in place.

## Step 7



- Apply pressure to the back panel, away from the camera to remove.

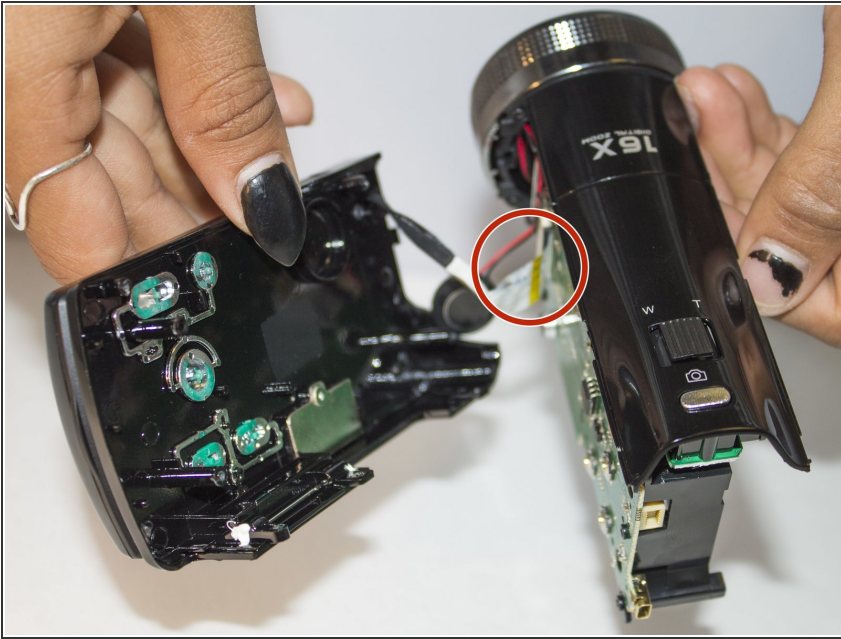
## Step 8



- Set aside back panel for now.
- Remove the final 4 mm Phillips #1 screw holding the screen in place. It is very small and hard to see.

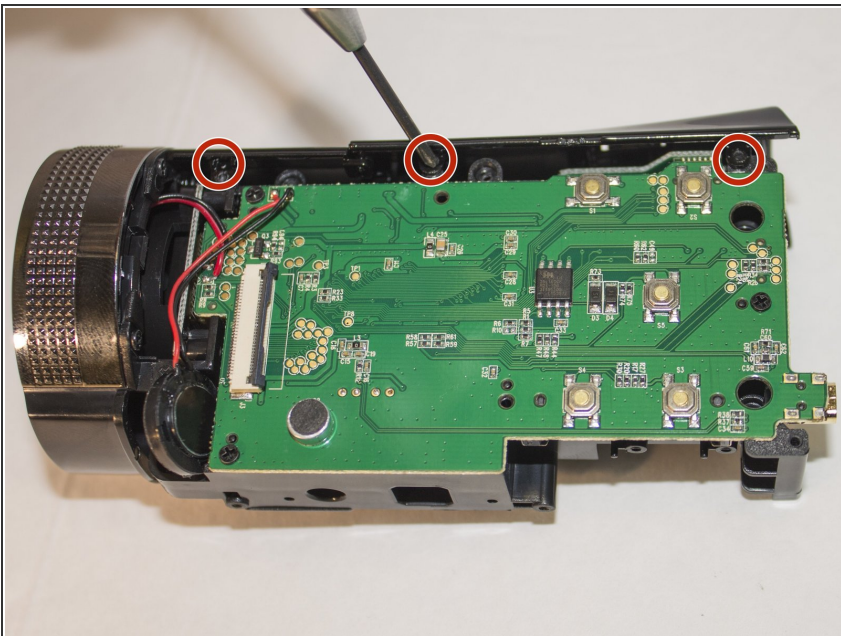


## Step 9



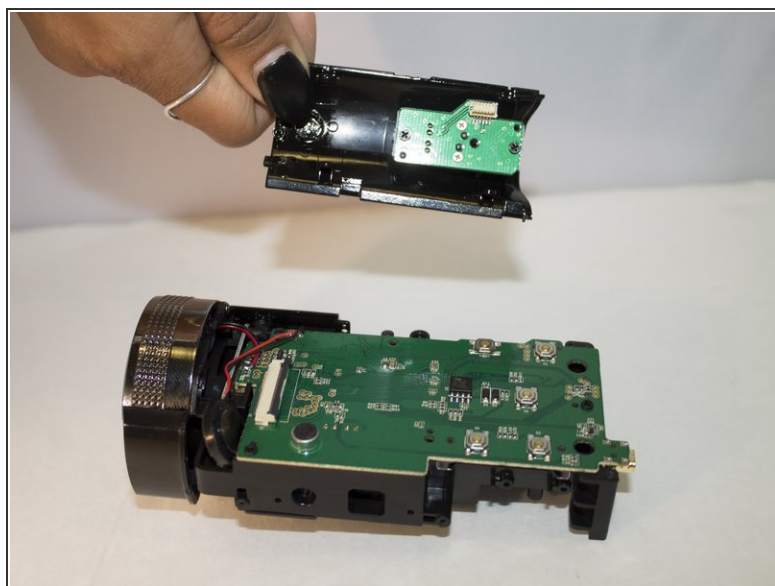
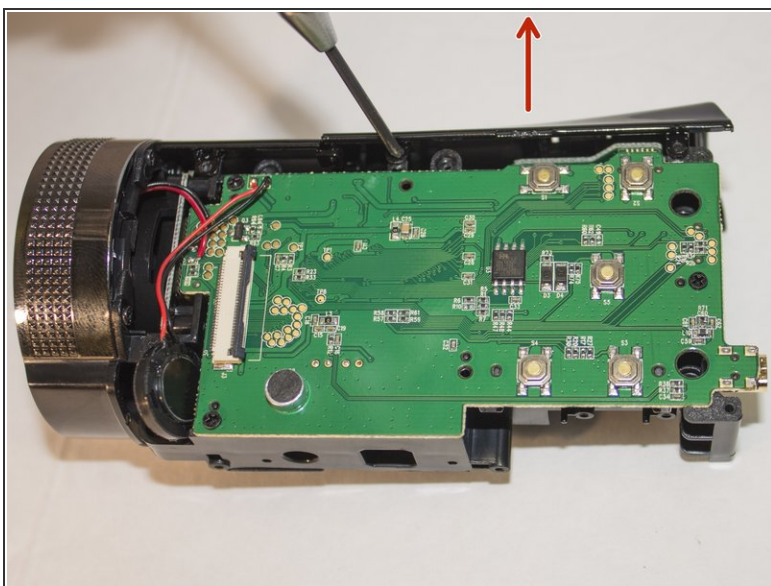
- Carefully apply pressure, away from the camera, to the screen to detach it from the body.
- The white cord should still be connected to the body.
- OPTIONAL: [Remove the screen](#) to make accessing the zoom button easier.

## Step 10



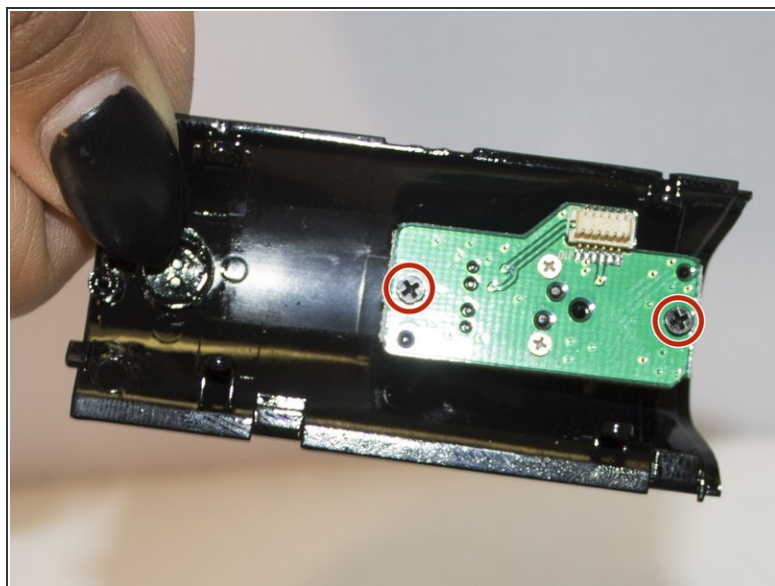
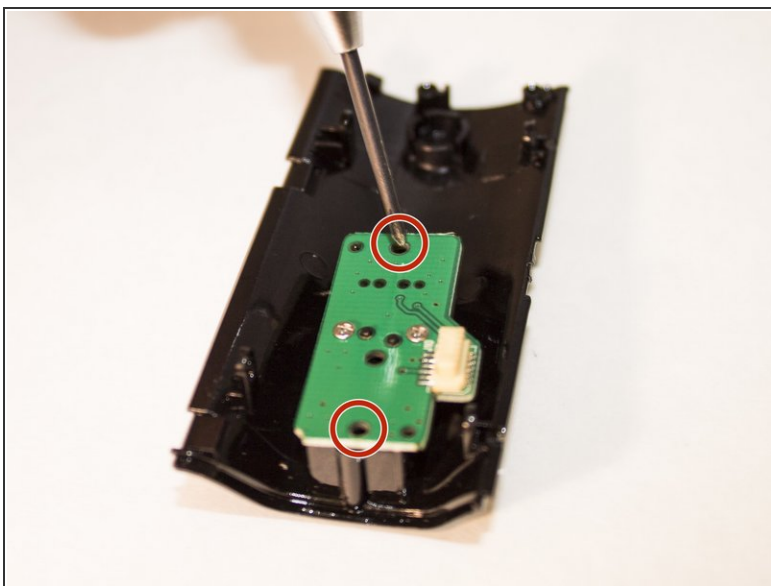
- Remove the three 4 mm Phillips #1 screws holding the top panel in place.

## Step 11



- Push upward on the top panel to remove it from the body of the camera.

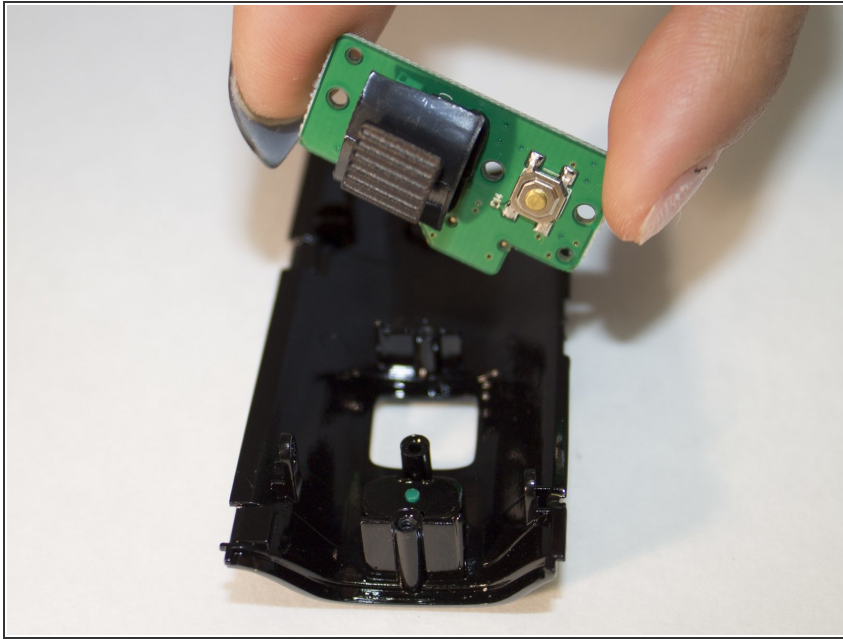
## Step 12



- Remove the two 4 mm Phillips #1 screws holding the circuit board in place.
- Do not remove the silver screws.



## Step 13



- Lift the circuit board out of the plastic casing.
- Gently pull on zoom button to remove it from the circuit board.

To reassemble your device, follow these instructions in reverse order.