



# Prerequisite Lower Half Casing Disassembly

This guide details how to remove the plastic casing from the lower half of the iHome iP37.

Written By: Jerrell



---

## INTRODUCTION

This guide will show you how to remove the plastic casing from the lower half of the iHome iP37. This step is necessary in order to replace any components housed in the lower half.

---



### TOOLS:

- [Phillips #2 Screwdriver](#) (1)
-

## Step 1 — Exterior Housing



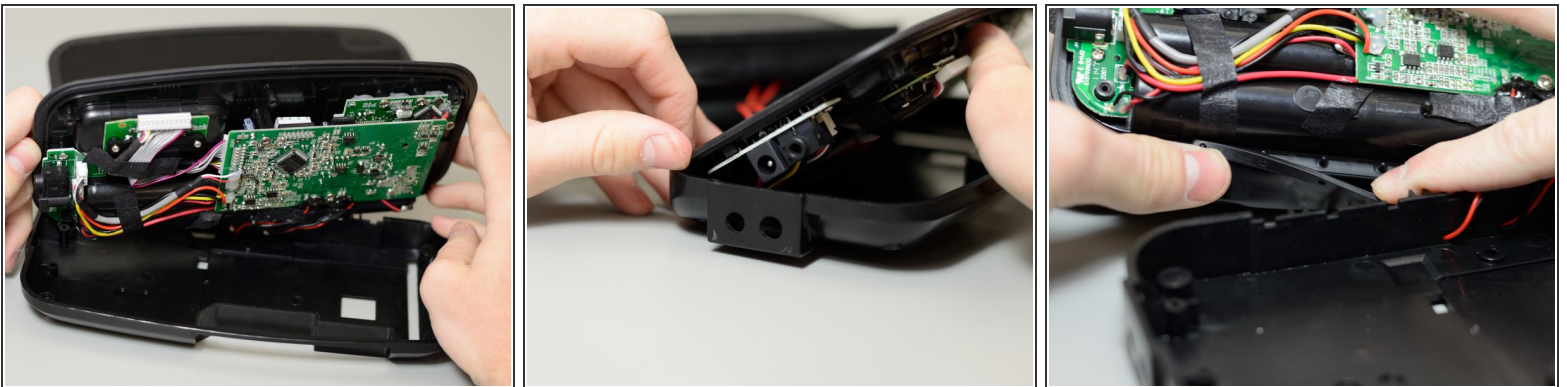
- Pry the exterior housing off the iHome iP37. You may need extra leverage to do this.
- ⓘ Note: This step is the most difficult due to the way it is attached. The glue holding the exterior housing to the internals does not break easily. You may want to use iFixit's [iOpener](#) to soften the glue.
- ⓘ Note: The process is the same for both the upper half and the lower half. To identify the halves, look for these details: the upper half has a metal grid, and the lower half has buttons. If you are replacing any other components, pry off the lower half.



## Step 2 — Lower Half Casing



- Remove these four 9 mm screws from the plastic casing; you will need a Phillips #2 driver to do this.
- Remove the flanged 9 mm screw from the counterweight; you will need a Phillips #2 driver to do this.
- Lift and remove the counterweight.

## Step 3



- Lift and remove the plastic casing.
-  Note: It is best to lift the casing starting from the side without the protruding 3.5mm audio port and power port.
-  Reminder: During this process, a rubber cover will likely be dislodged. Make sure to re-seat this cover on the small pegs before putting the plastic casing back on.

To reassemble your device, follow these instructions in reverse order.