



Prerequisites Only

Prerequisites Only

Written By: Yegor Shea



INTRODUCTION

Prerequisites Only



TOOLS:

- [Spudger](#) (1)
 - [Phillips #0 Screwdriver](#) (1)
 - [Tweezers](#) (1)
-

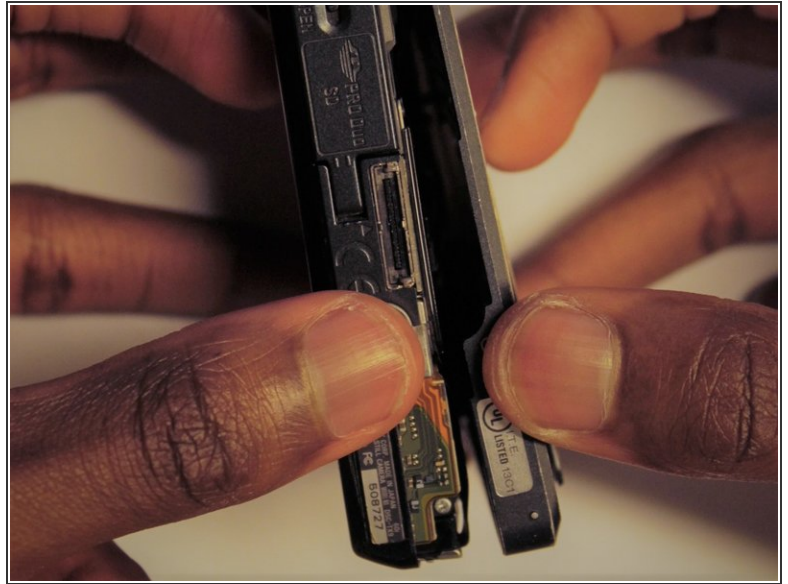
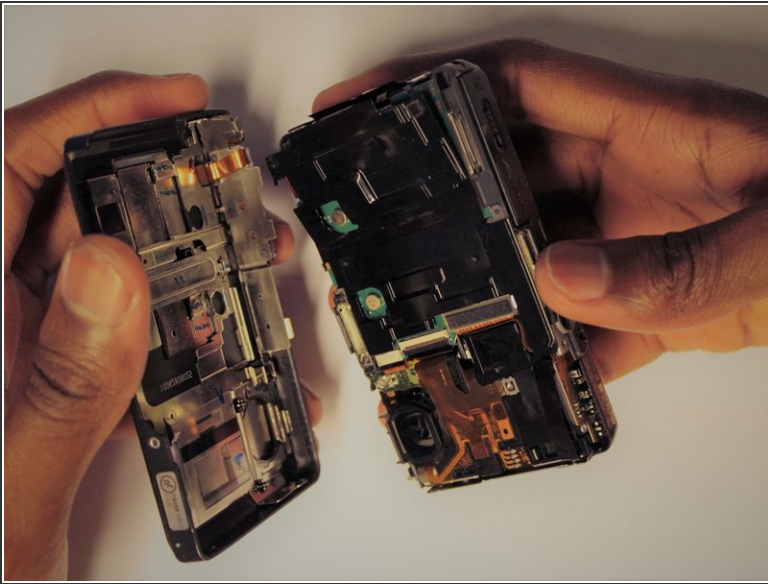
Step 1 — Prerequisites Only



- Use a Phillips #0 screwdriver to unscrew the six 2mm screws on the outer case of the camera.

☞ If there is a battery or SD card inside remove before beginning the process.

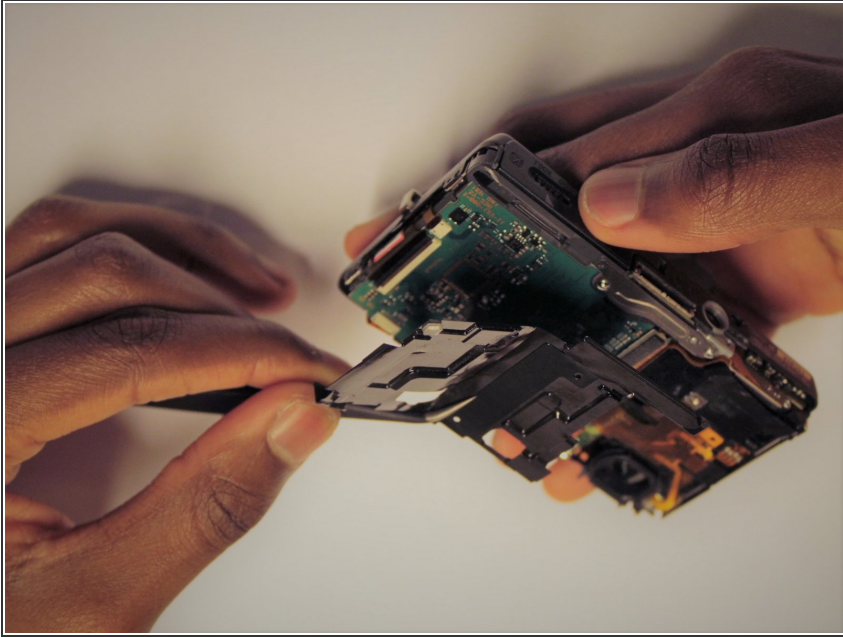
Step 2



- Use your hands or a Spudger to Pull off the front cover of the camera.

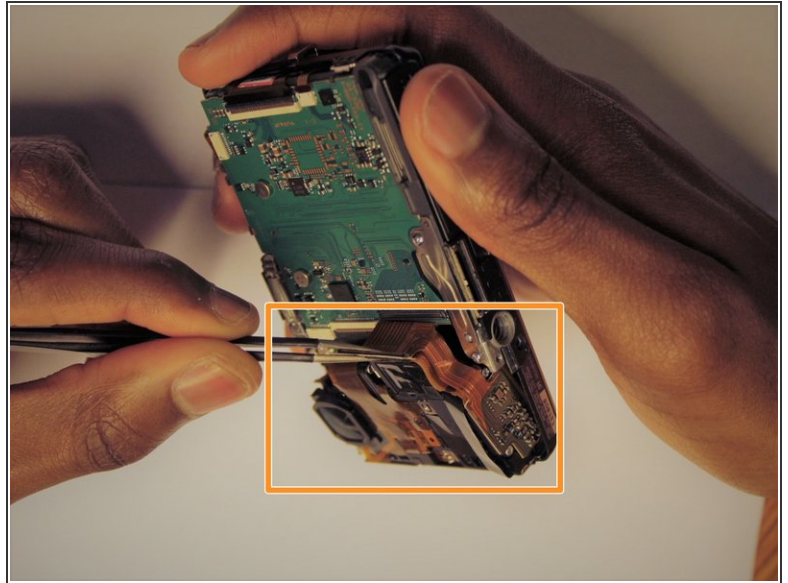
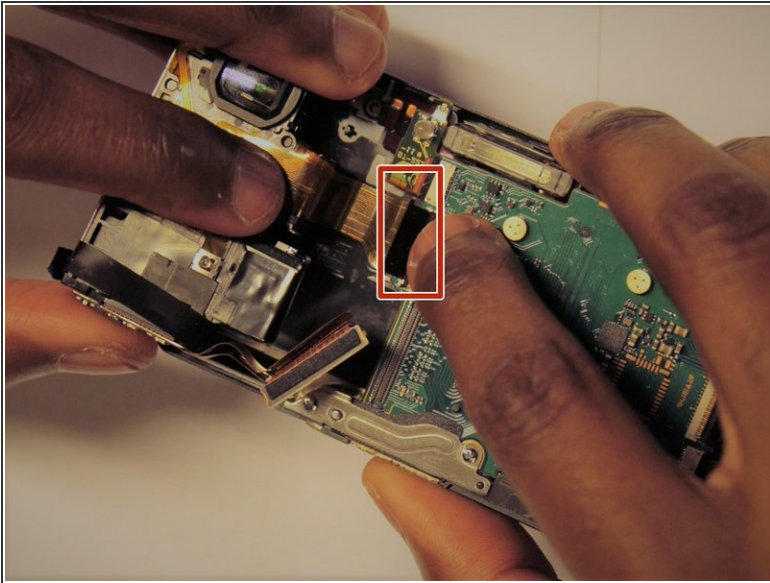
⚠ If the casing is not coming apart easily, do not force it.

Step 3



- Remove the protective black cover layer with your hands and set it aside.
- ⓘ The use of tweezers may be necessary if the cover is difficult to remove.

Step 4



- The ZIF connector can be removed by flipping the small black holder into the upright position and then sliding the ribbon cable out carefully.
- Once this has been done, use tweezers to unplug the flat topped connector for the lens' circuit board from the motherboard.

 **DO NOT** force the ribbon cables or they will rip.

 Refer to the ([Recognizing & Disconnecting Cable Connectors](#)) page for assistance.

To reassemble your device, follow these instructions in reverse order.