



Princess Wand Speaker Replacement

This guide will show you how to repair the speaker inside the wand.

Written By: Samantha



INTRODUCTION

If the speaker has stopped working, and you replaced the batteries, then this one way you can fix the speaker. There are no hazards or special requirements for this guide.



TOOLS:

- [Phillips #0 Screwdriver](#) (1)
-

Step 1 — Speaker



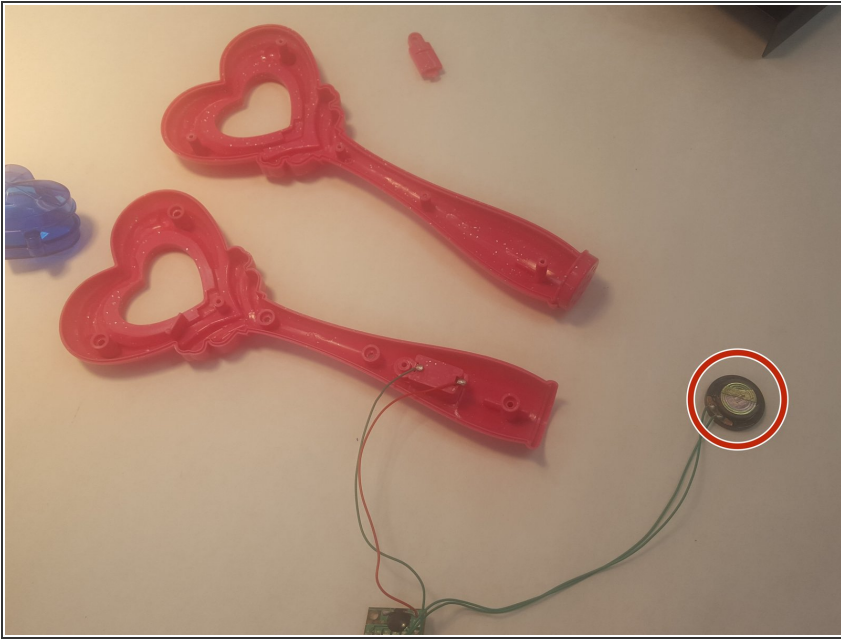
- Use a Phillips #0 screwdriver to remove every screw on the back of the wand.

Step 2



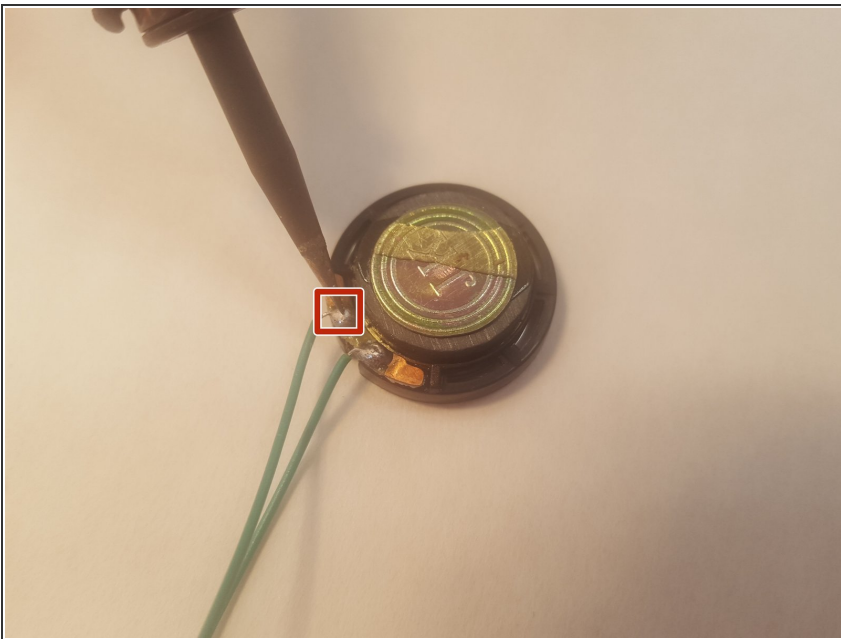
- Next, gently open the wand.

Step 3



- Locate the speaker at the bottom of the wand, and take it out.

Step 4



- Desolder the speaker wires from the terminals on the speaker.

To reassemble your device, follow these instructions in reverse order.