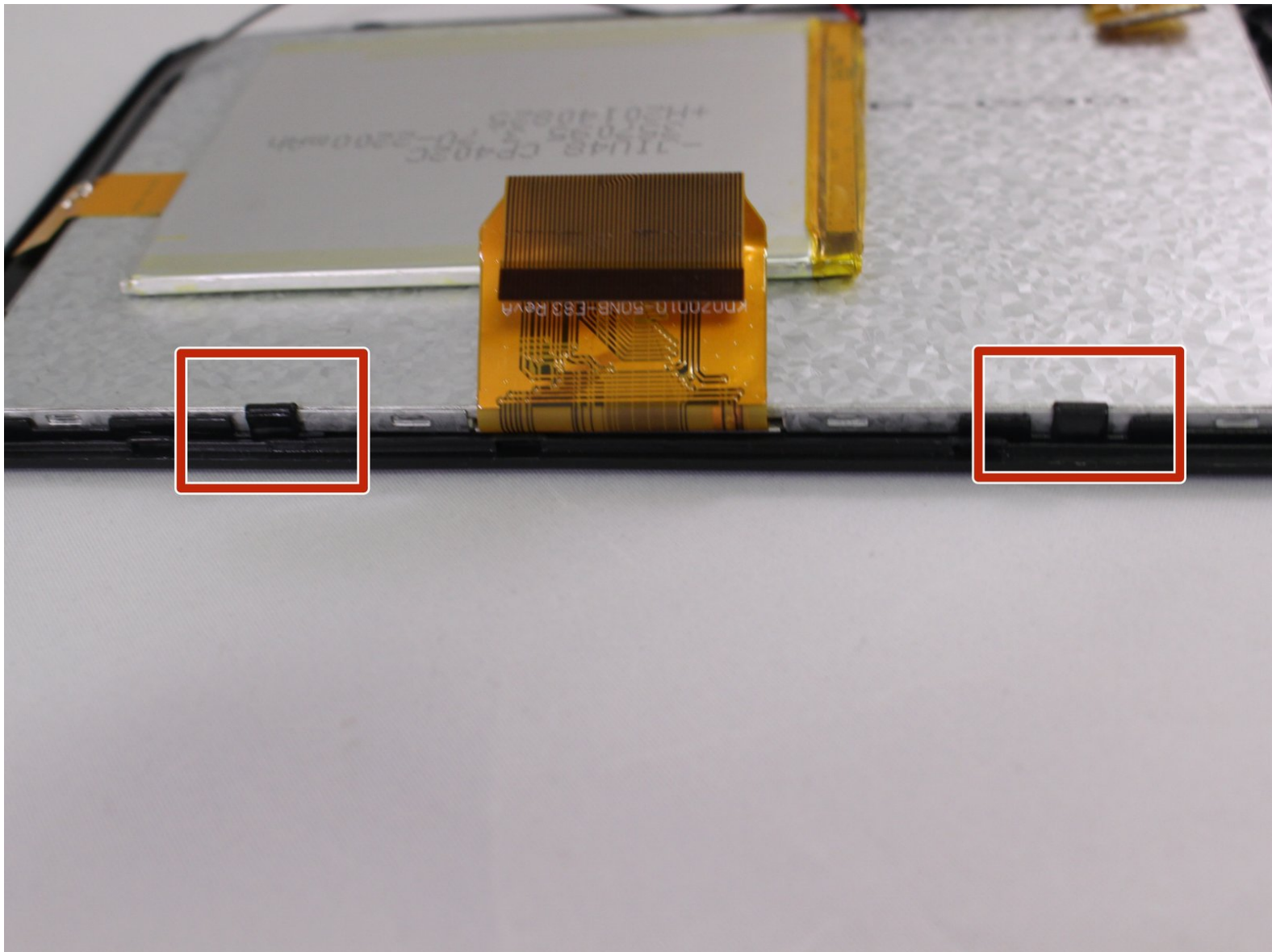




ProScan PLT7050 Screen Replacement

Is the screen of your device cracked or not turning on? Use this guide to replace the screen

Written By: Valerie Landguth



INTRODUCTION

This is the replacement guide for the screen. If the screen is broken , use this guide to replace the screen



TOOLS:

- [iFixit Opening Tools](#) (1)
 - [Soldering Iron](#) (1)
 - [Phillips #00 Screwdriver](#) (1)
-

Step 1 — Open Device



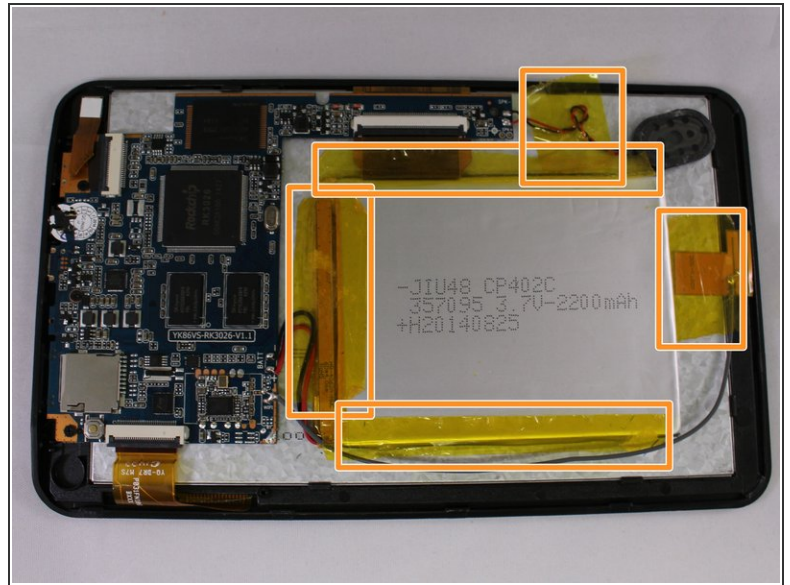
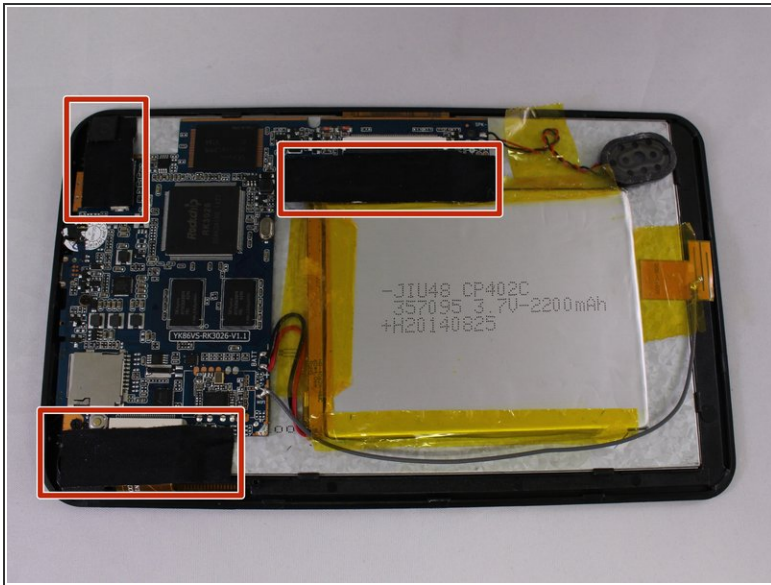
- Make sure device is unplugged and turned off while working on the device.
- Remove 2 Phillips head, 4.3 mm screws from the bottom side of the tablet with a PH00 screwdriver.

Step 2



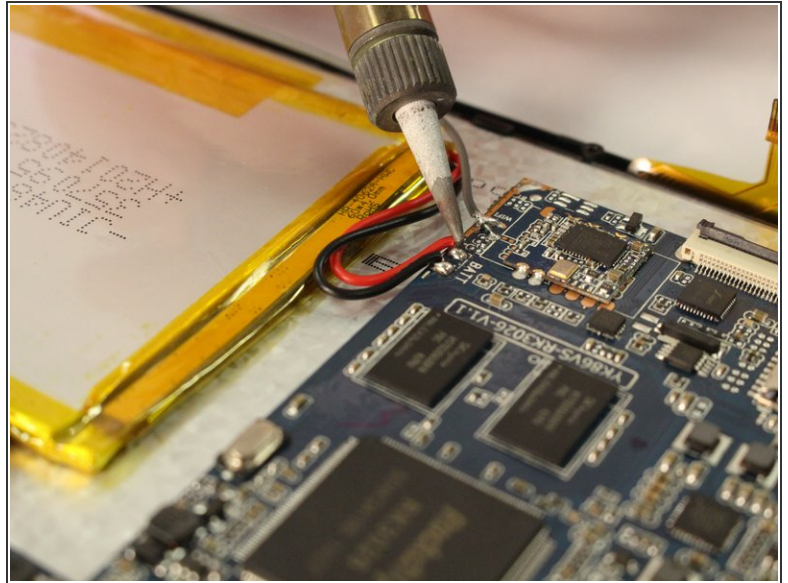
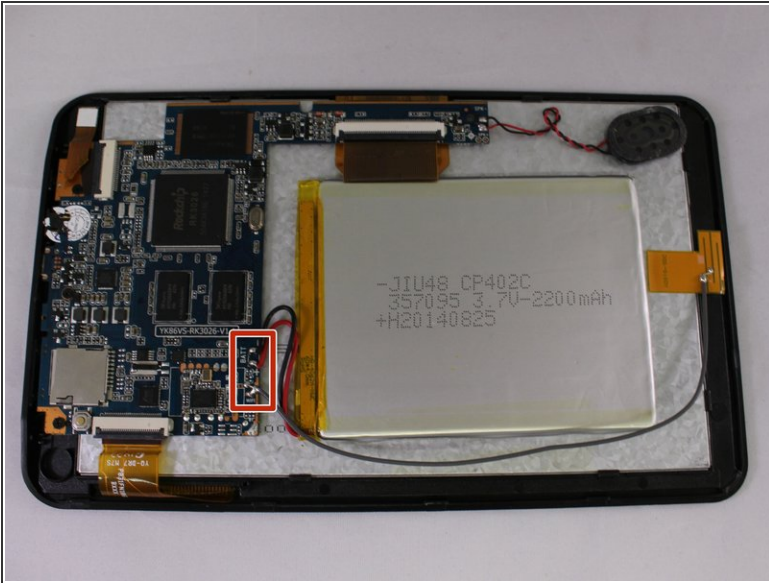
- Use the plastic opening tools to pry the back of the tablet open.
 - You may need to slide the tool along the sides of the device to get it to open. You might hear some popping noises, it is okay.
- i** May be helpful if you start by the microSD slot.

Step 3 — Motherboard



- Remove the 3 black pieces of tape from the device.
- Remove the 5 yellow pieces of tape from the device.

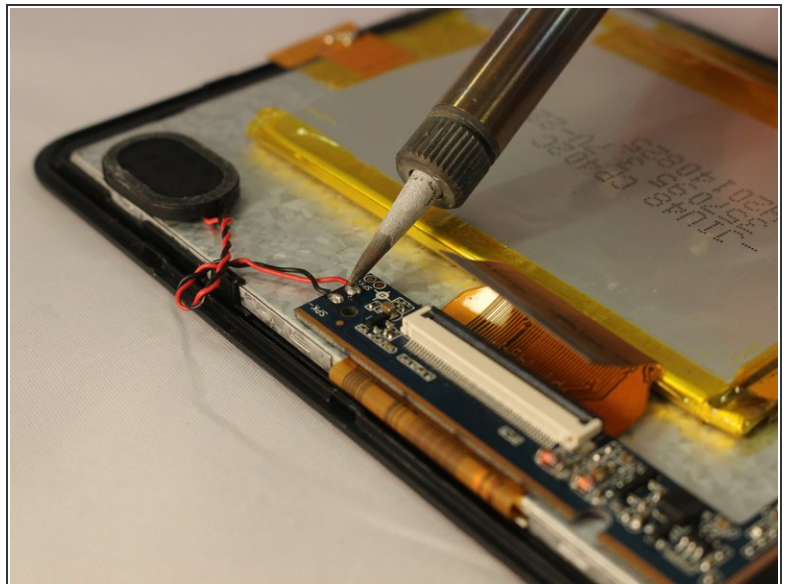
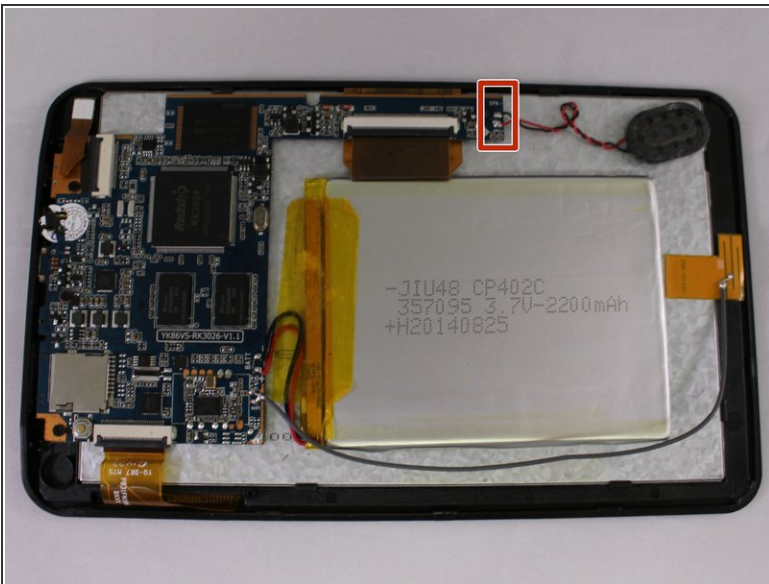
Step 4



- Use the soldering tool to remove the 3 wires from the mother board to the battery (black, red, gray).

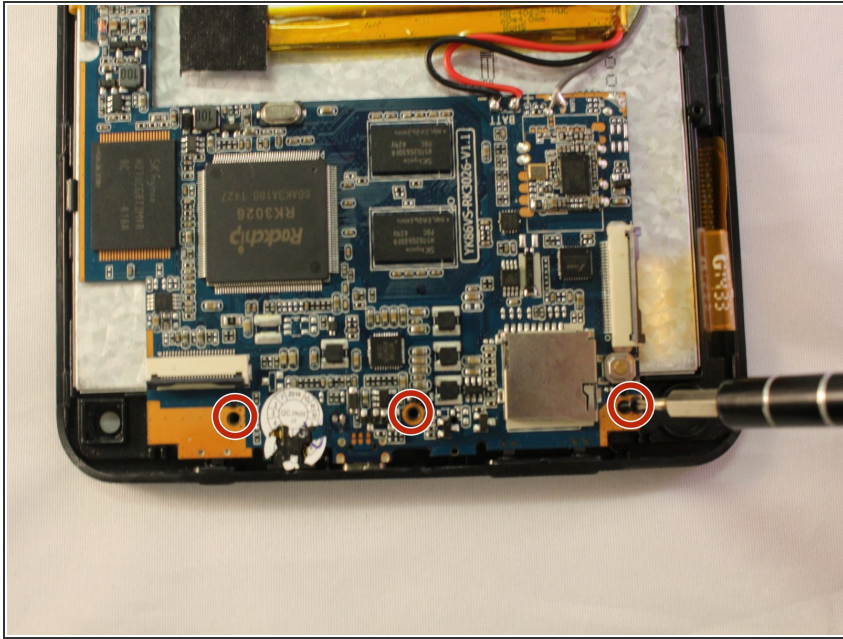
⚠ Soldering tool will get hot.

Step 5



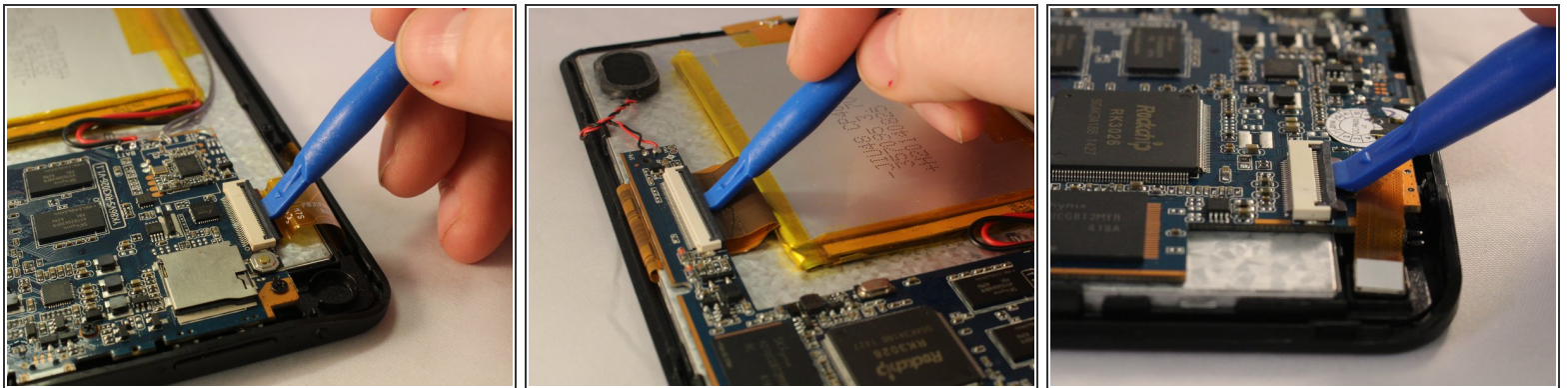
- Remove the speaker wires from the motherboard with the soldering tool.

Step 6



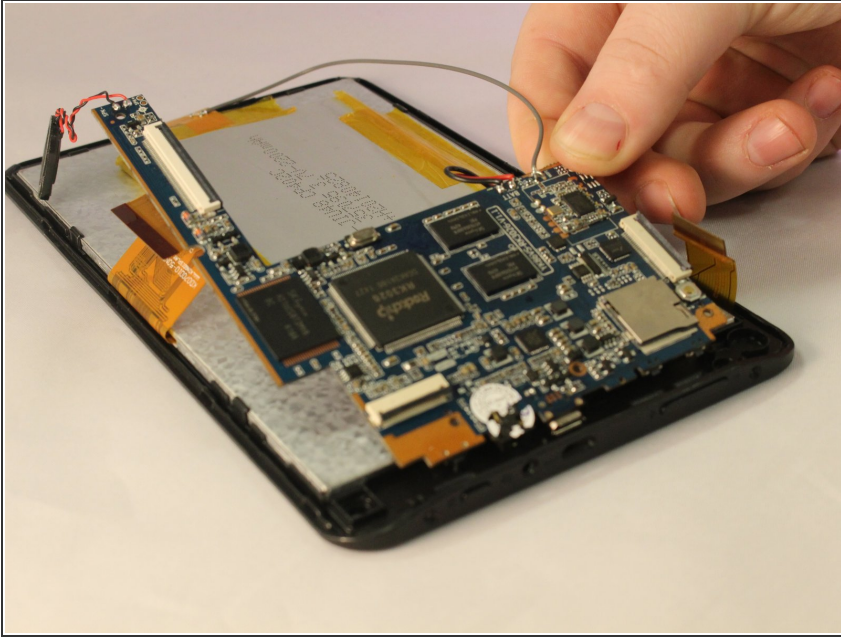
- Remove 3 Phillips head, 4.3 mm screws from the bottom side of the tablet with a PH00 screwdriver.

Step 7



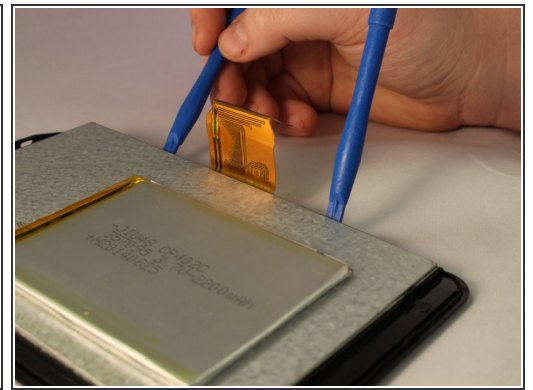
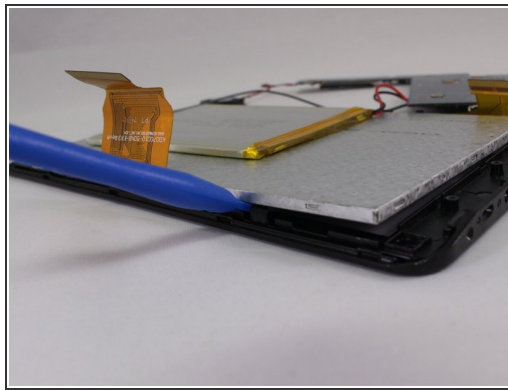
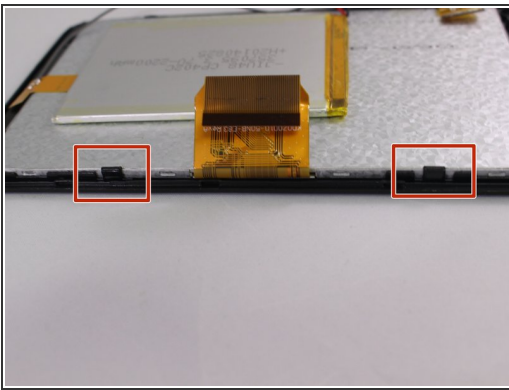
- Use the plastic opening tool to pop open all 3 ZIF connector tabs connected to the motherboard.
- Remove each ribbon from the ZIF connector port.

Step 8



- Lift the motherboard off the device taking care to pull the ports out of the casing.

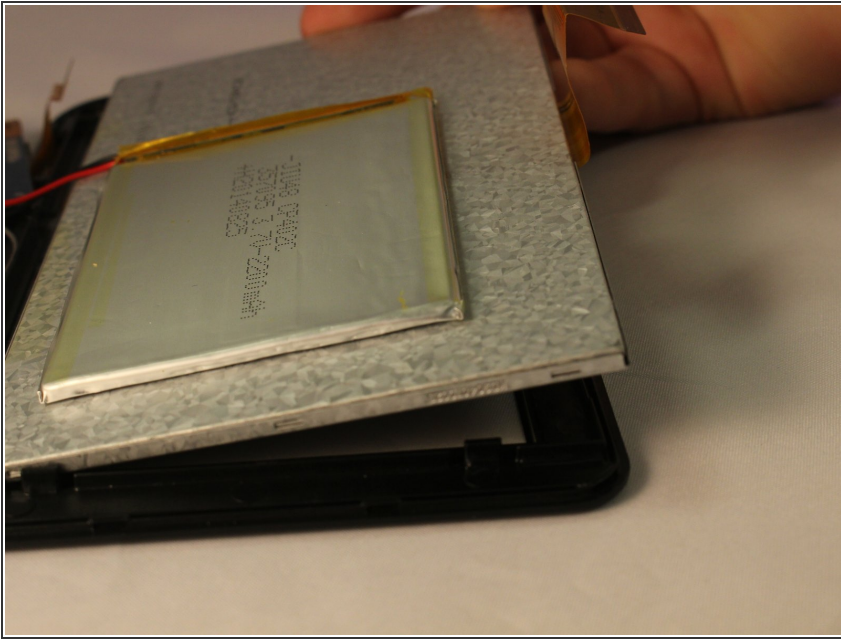
Step 9 — Screen



i You will need two plastic opening tools.

- Use one of the plastic opening tools next to one of the black clips on the side of silver screen.
- Use the second plastic opening tool to push back the black clip next to the one you have worked on. Push the second plastic opening tool under the screen.

Step 10



- Wiggle the screen and pull it from the casing.

To reassemble your device, follow these instructions in reverse order.