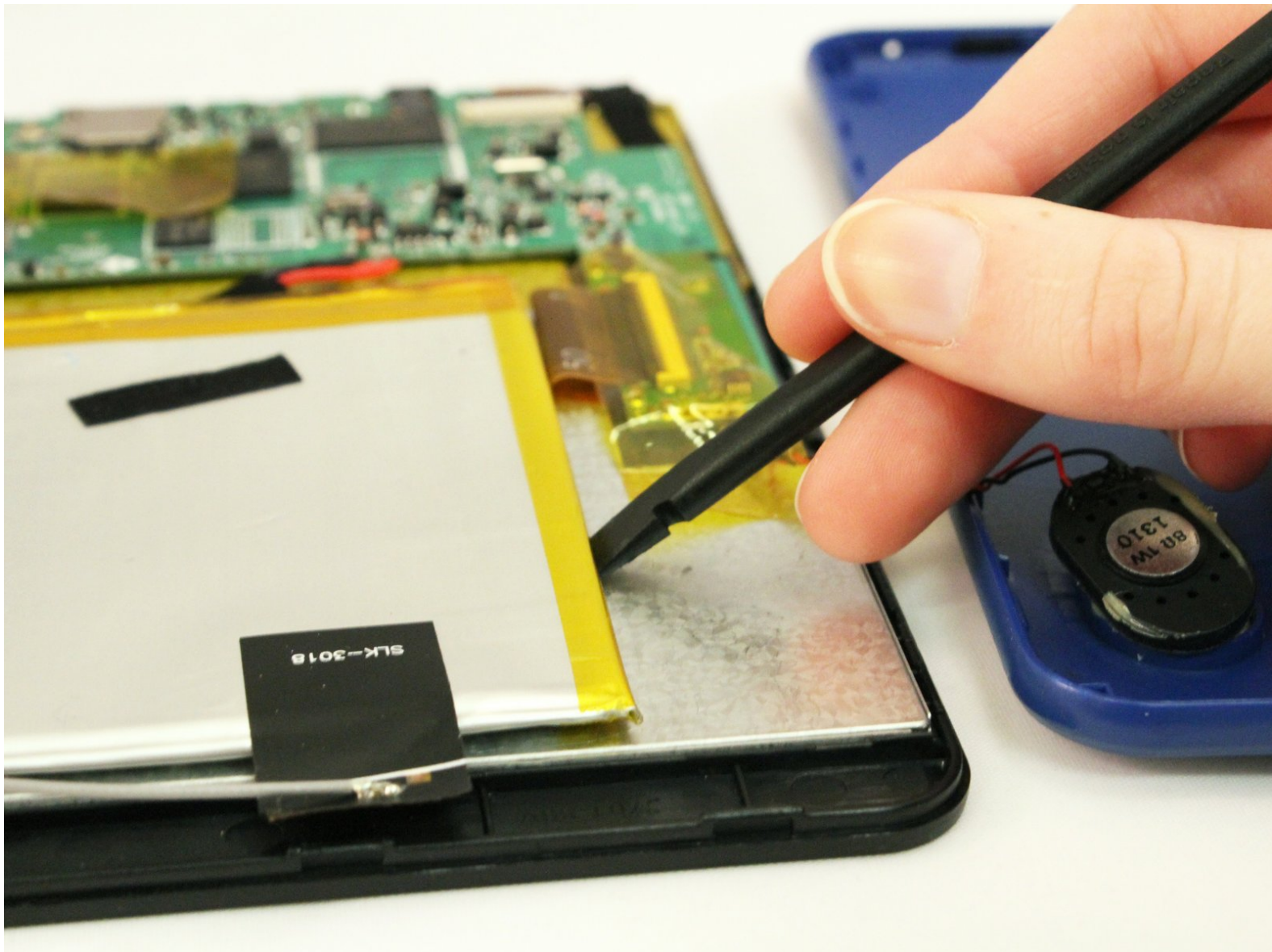




# ProScan PLT7223G Battery Replacement

Replace your broken battery

Written By: Nathaniel Girard



# INTRODUCTION

If your device will not turn on at all, use this guide to replace your dead or dying battery and make your device functional again.

---

## TOOLS:

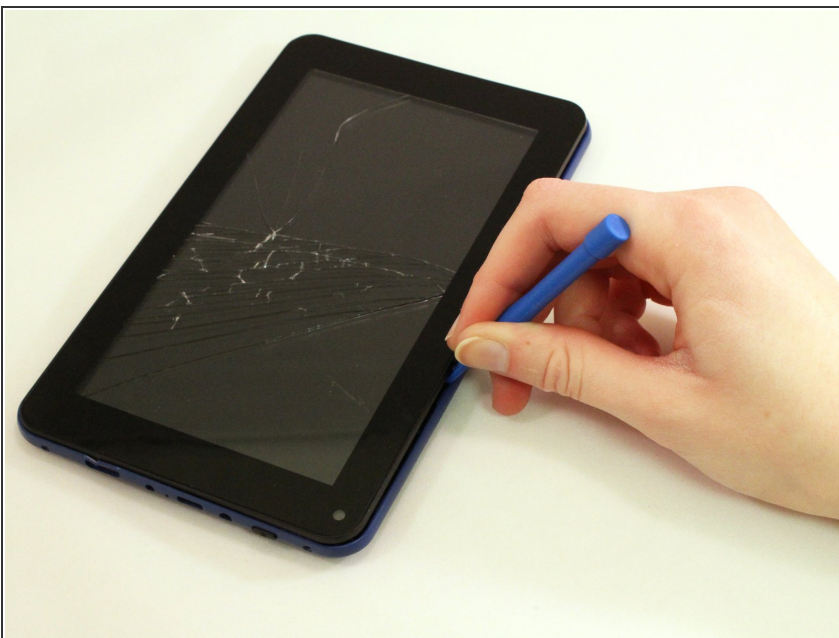
- [Phillips #00 Screwdriver](#) (1)
  - [iFixit Opening Tools](#) (1)
  - [Soldering Iron](#) (1)
  - [Heavy-Duty Spudger](#) (1)
-

## Step 1 — Battery



- Remove both 4 mm screws on the top of the tablet with a PH00 screw driver.

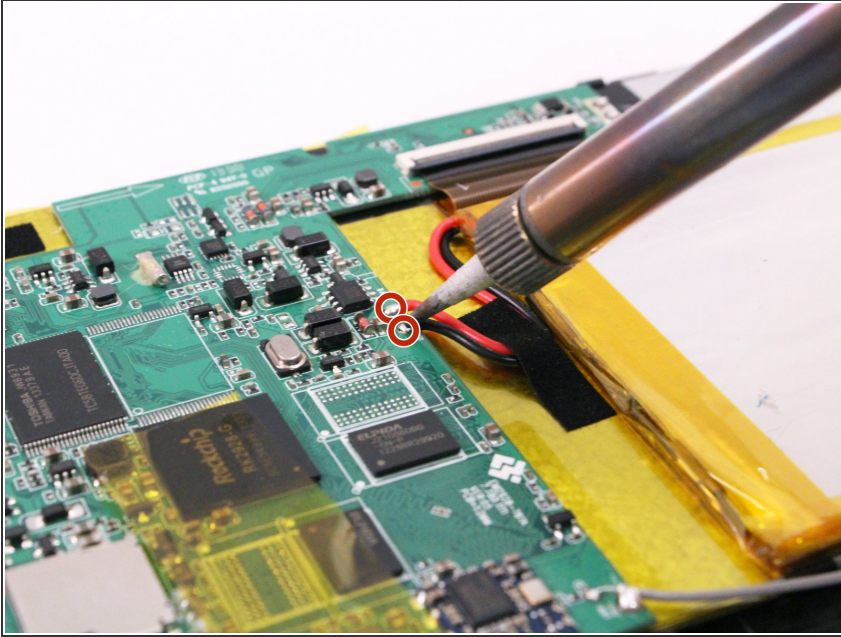
## Step 2



- Use the blue plastic opening tool to pry open the tablet.
- ⓘ You will hear popping sounds. That's okay.
- ⚠ Be careful when using the blue plastic opening tool on the side of the device near the speakers, as there is a wire here that connects the speakers to the motherboard.

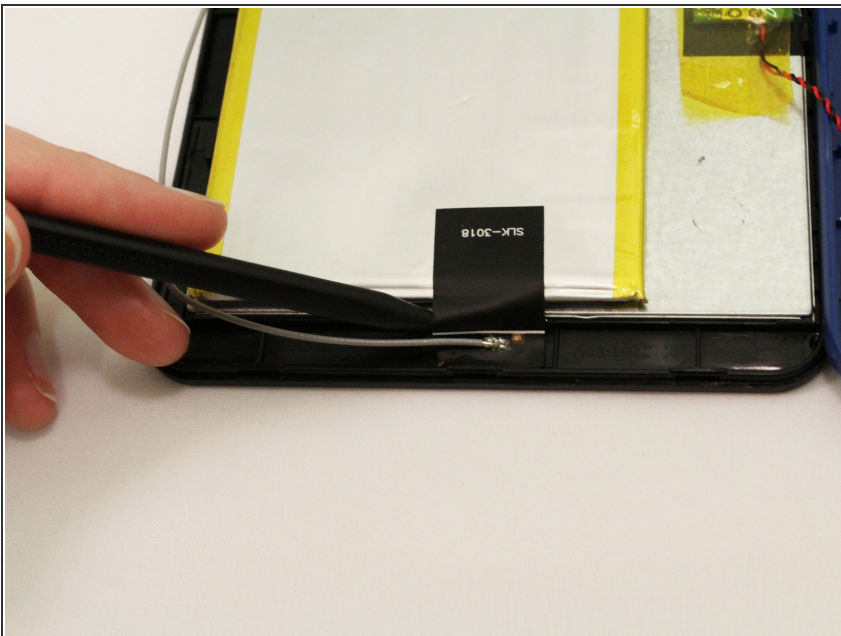


## Step 3



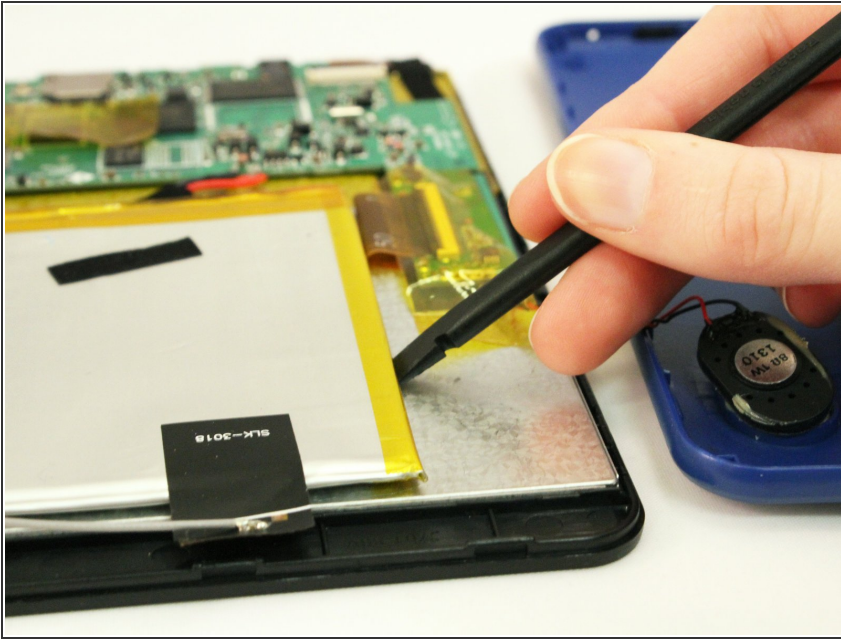
- Use a soldering tool and tweezers to remove the black and red wire from the motherboard.
- ⓘ Be sure to pay attention to where each wire goes so that you attach them in the correct order when reassembling the device.
- ⚠ Soldering tool will get hot, handle with care.

## Step 4



- Use a spudger to remove the black tape from the battery.

## Step 5



- Using the flat end of a spudger, carefully separate the battery from the base of the device.
- ⓘ There is an adhesive holding the charger in place.

To reassemble your device, follow these instructions in reverse order.