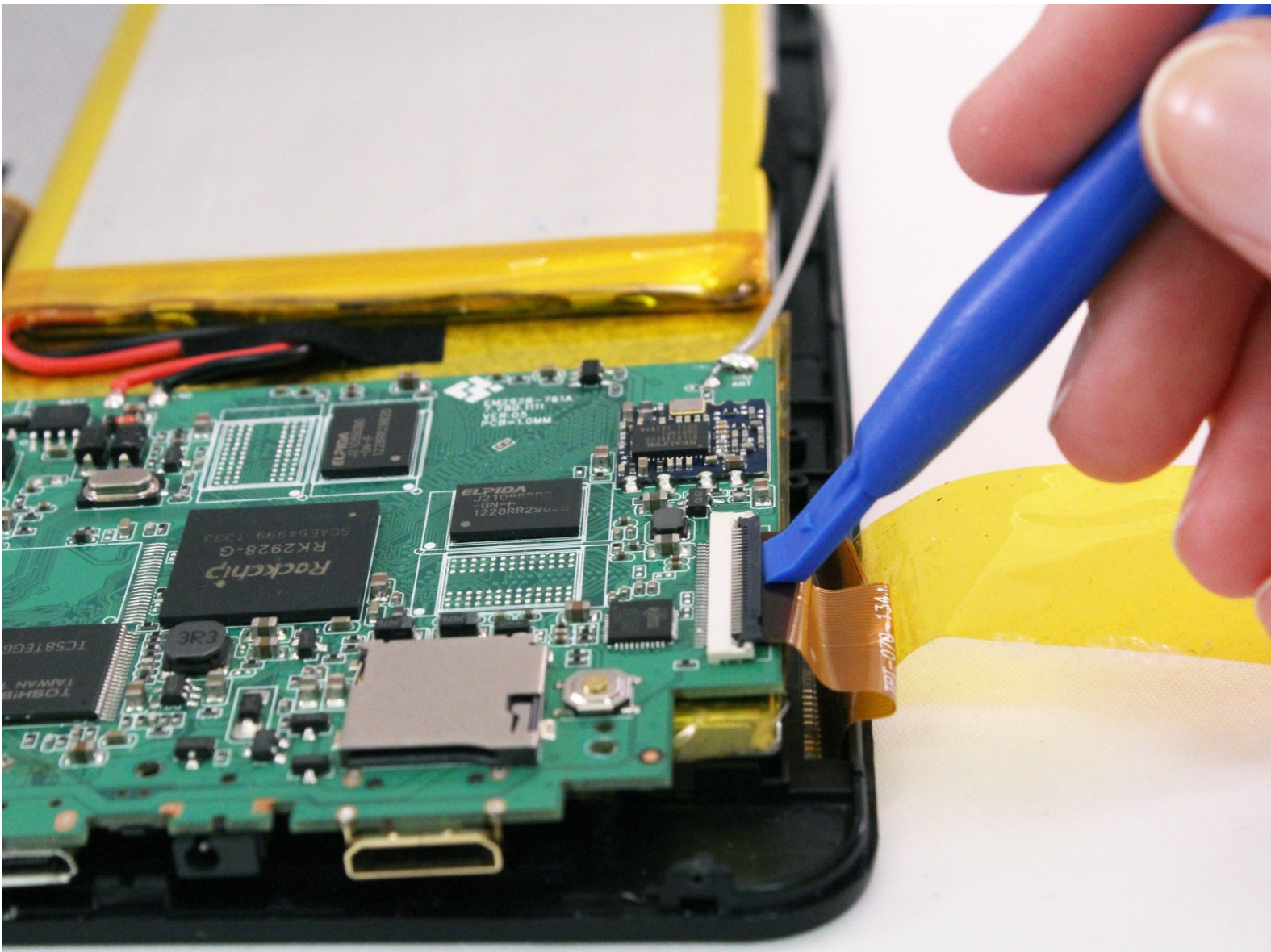




ProScan PLT7223G Motherboard Replacement

You will able to replace your tablet's faulty motherboard.

Written By: Daniel Hernandez



INTRODUCTION

If your device isn't working and other troubleshooting methods have failed, or a component of the motherboard has failed, use this guide to replace the motherboard and make your device functional again.



TOOLS:

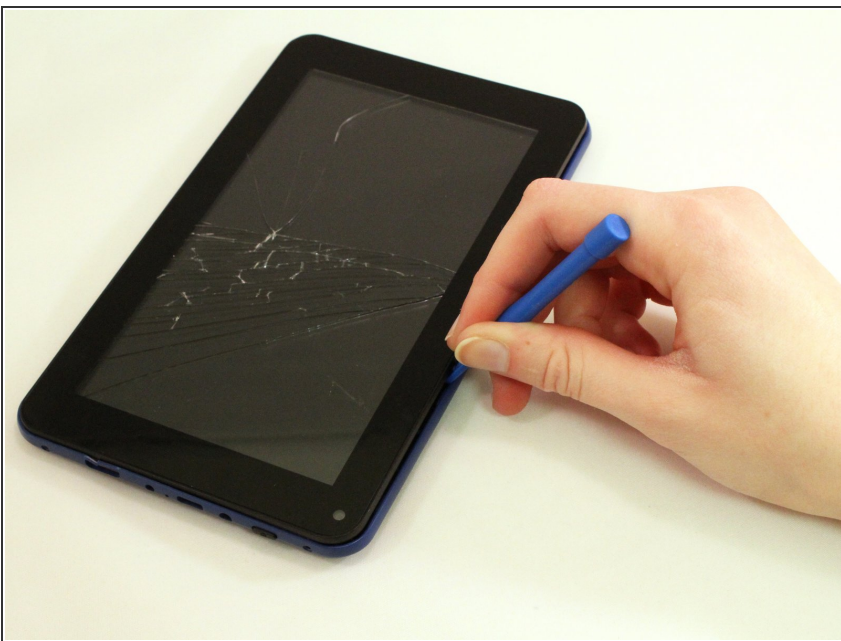
- [Phillips #00 Screwdriver](#) (1)
 - [iFixit Opening Tools](#) (1)
 - [Soldering Iron](#) (1)
-

Step 1 — Motherboard



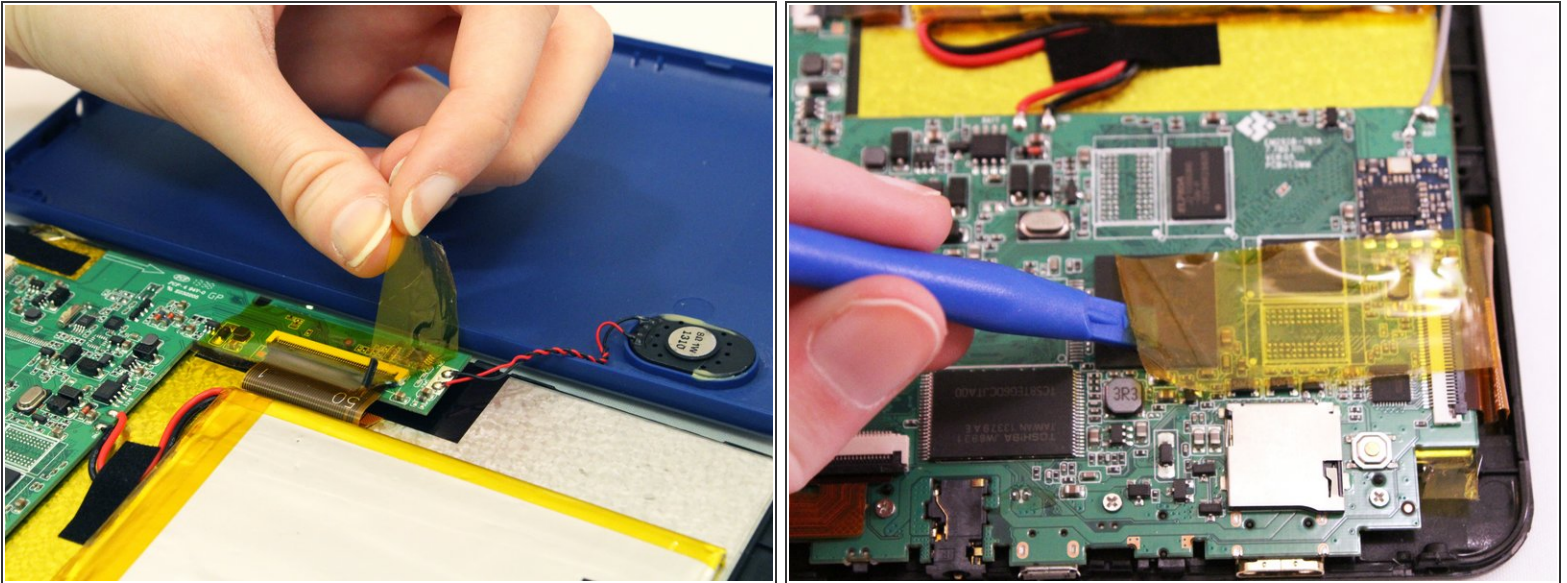
- Remove both 4 mm screws from the top of the tablet using a PH00 screw driver.

Step 2



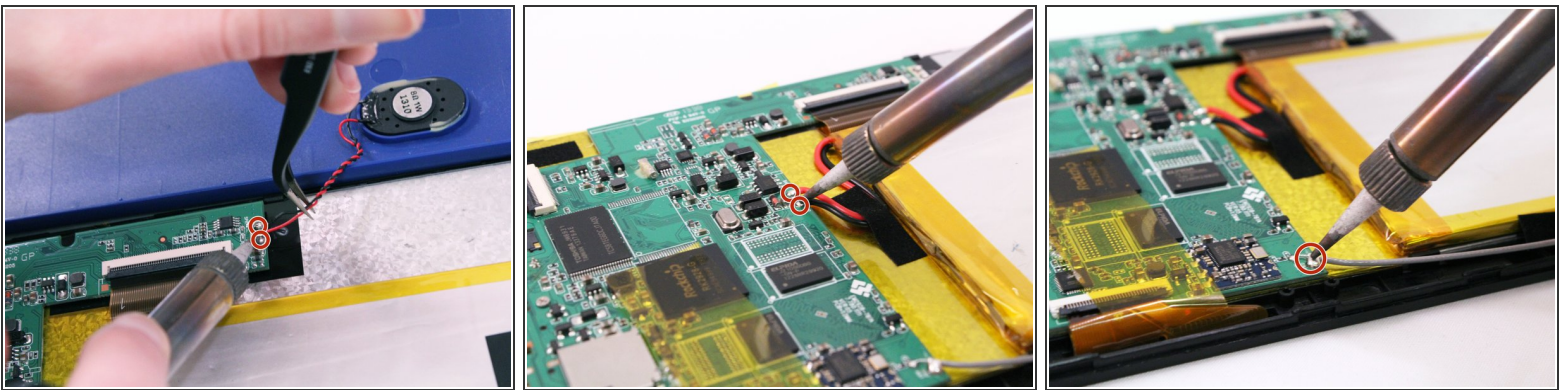
- Use the blue opening tool to pry the tablet open.

Step 3




- Remove all yellow tape from the motherboard.

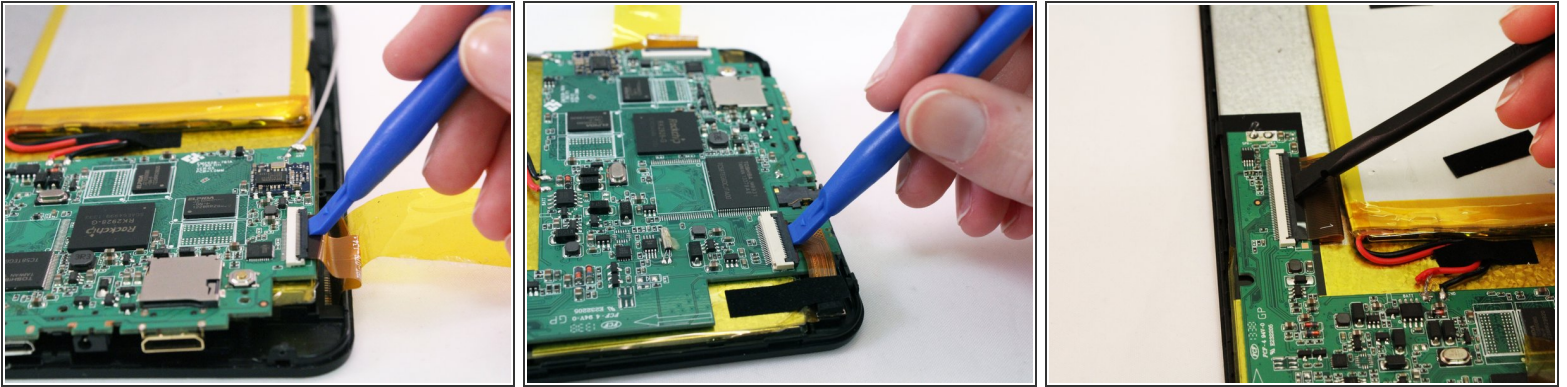
Step 4



- With the soldering tool remove the speaker wires, battery wires and gray wire that are connected to the motherboard.

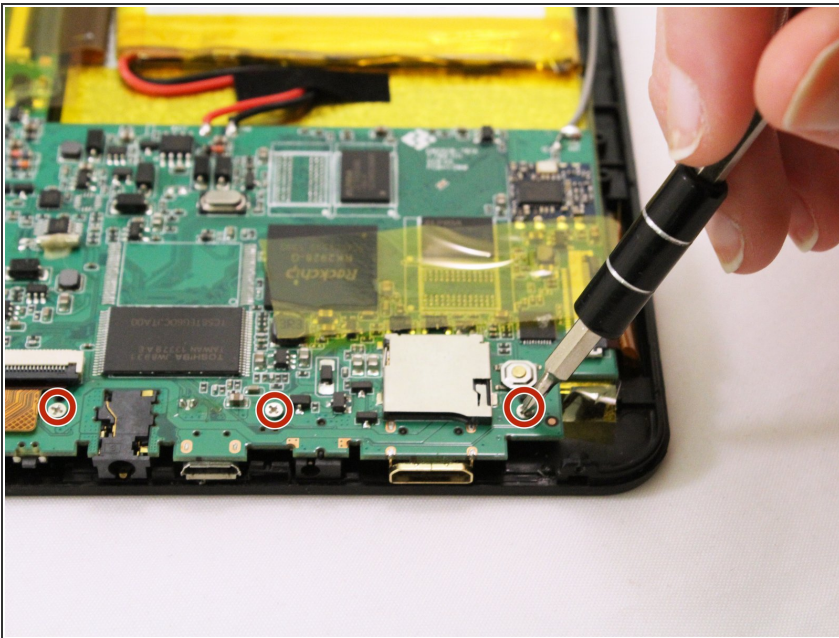
 Pay close attention to where each wire goes, so that you reconnect them in the correct order.

Step 5



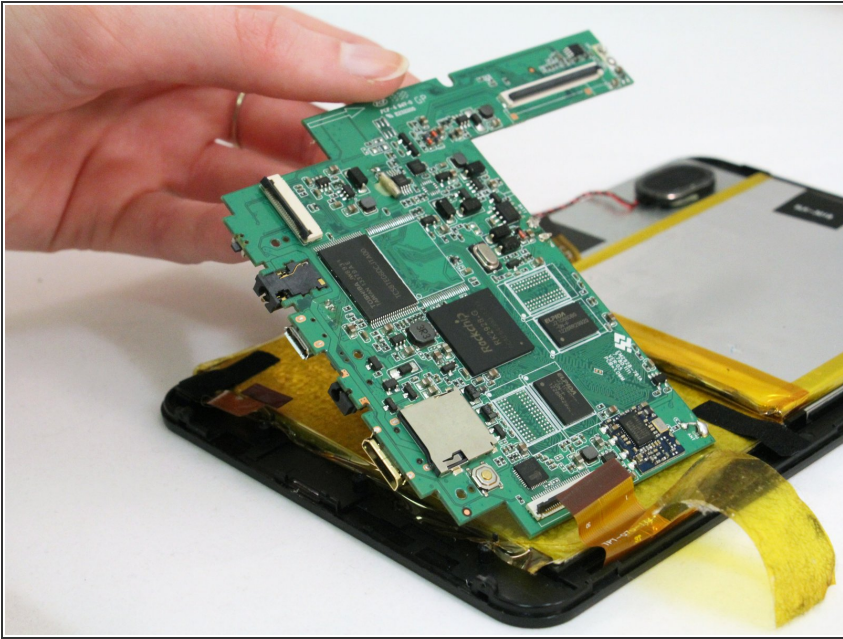
- Lift all three ZIF connectors to disconnect the ribbon wire.

Step 6



- Use a PH00 screw driver to remove the three 4 mm screws holding the motherboard down.

Step 7



- Lift the motherboard off the device.

To reassemble your device, follow these instructions in reverse order.