



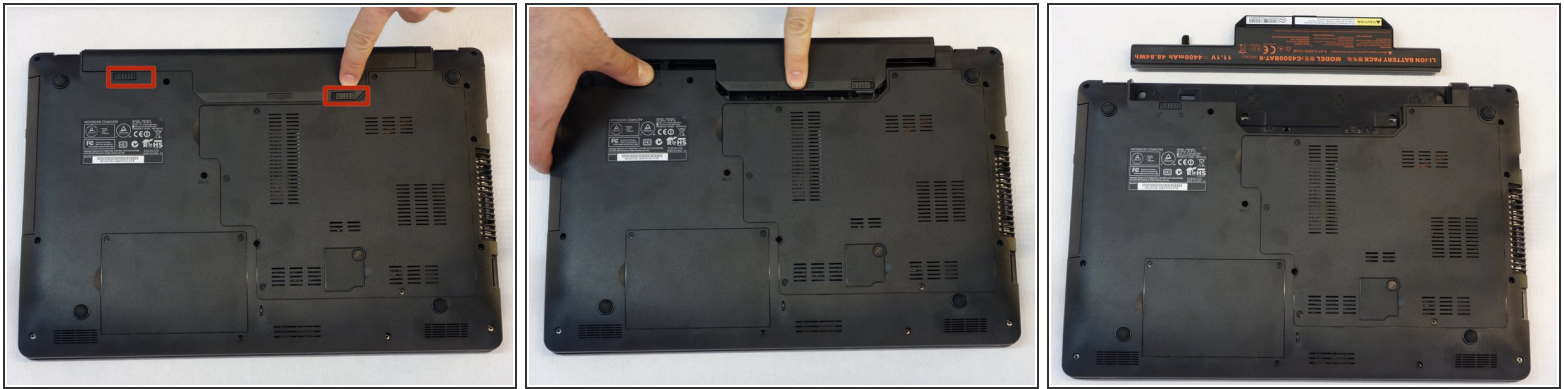
Processor of why! Replace W253EU (English)

Replace processor (CPU) Intel 3210M.

Written By: Felice Suglia

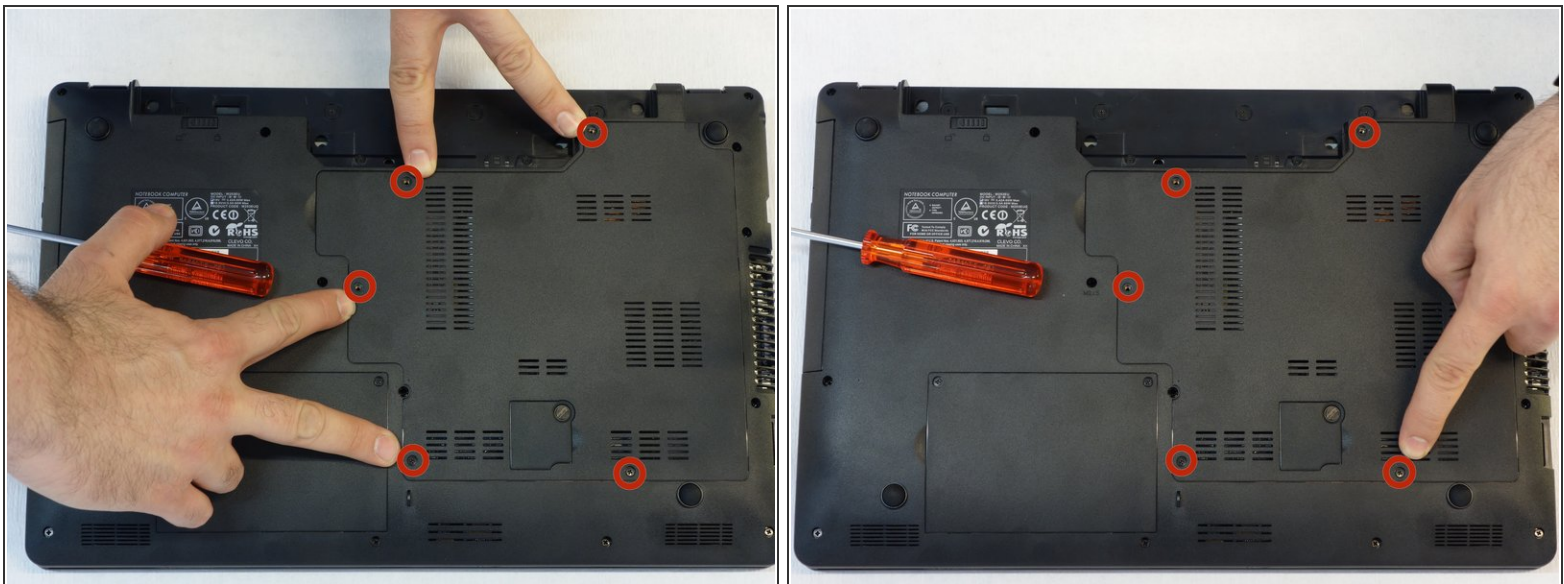


Step 1 — Battery from why! Remove W253EU



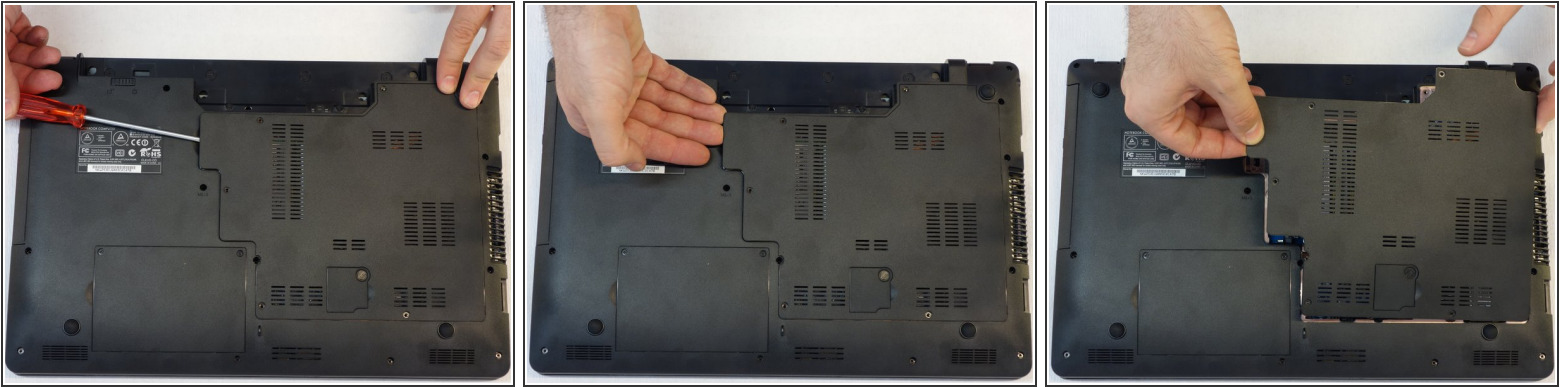
- Turn off the computer.
- ⓘ Before each operation it is important to start with the removal of the accumulator.
- Take the slide unlocked into position, remove the battery.

Step 2 — Access to RAM and CPU from why! W253EU (German)



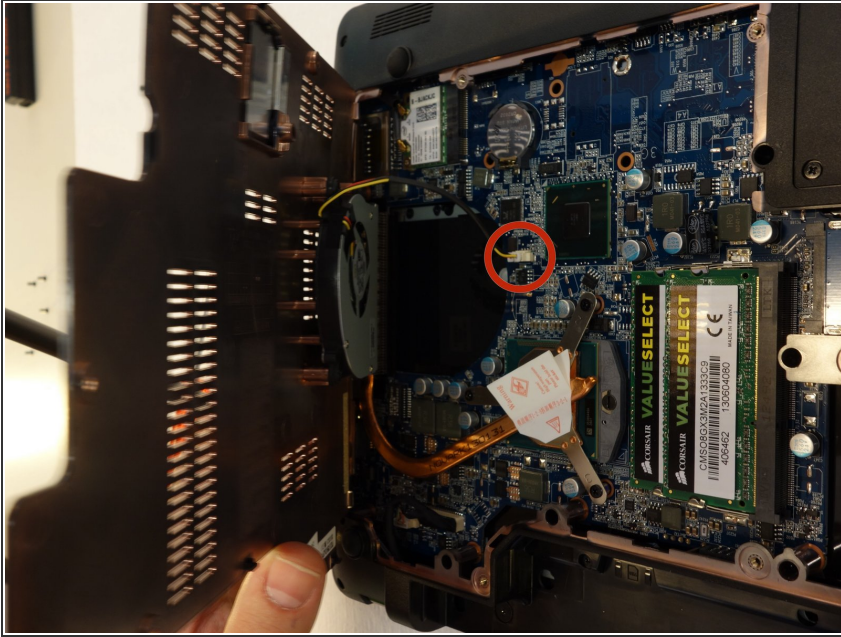
- Using the screwdriver Philips # 1, unscrew the 5 fixing screws of the cover.

Step 3



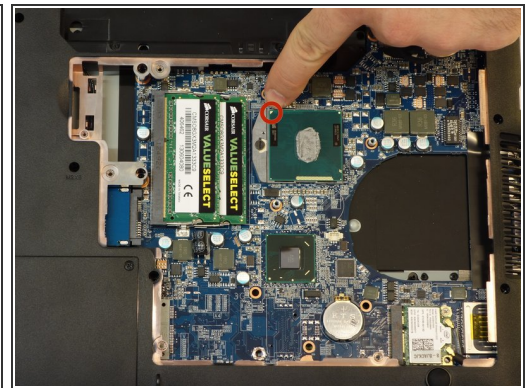
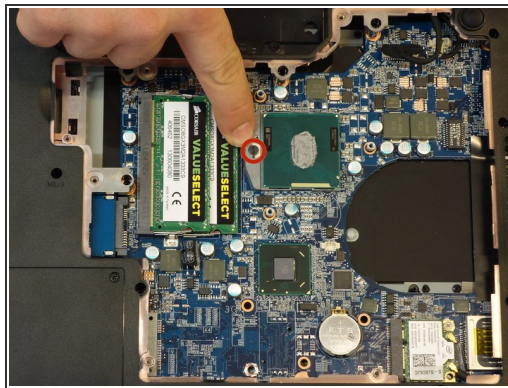
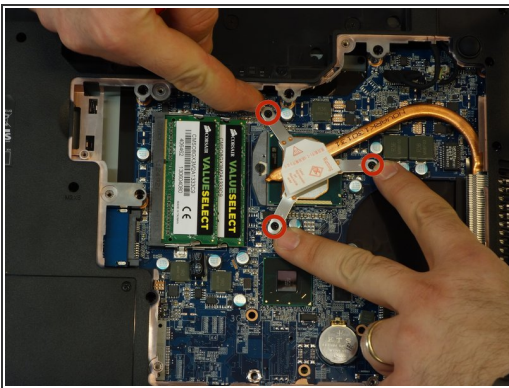
- Push the screwdriver a few millimeters under the cover so that it can be touched with your fingers.
- Now lift the cover carefully.
- Attention! Disconnect the ventillator cable so that the cover can be completely removed (see next step).

Step 4



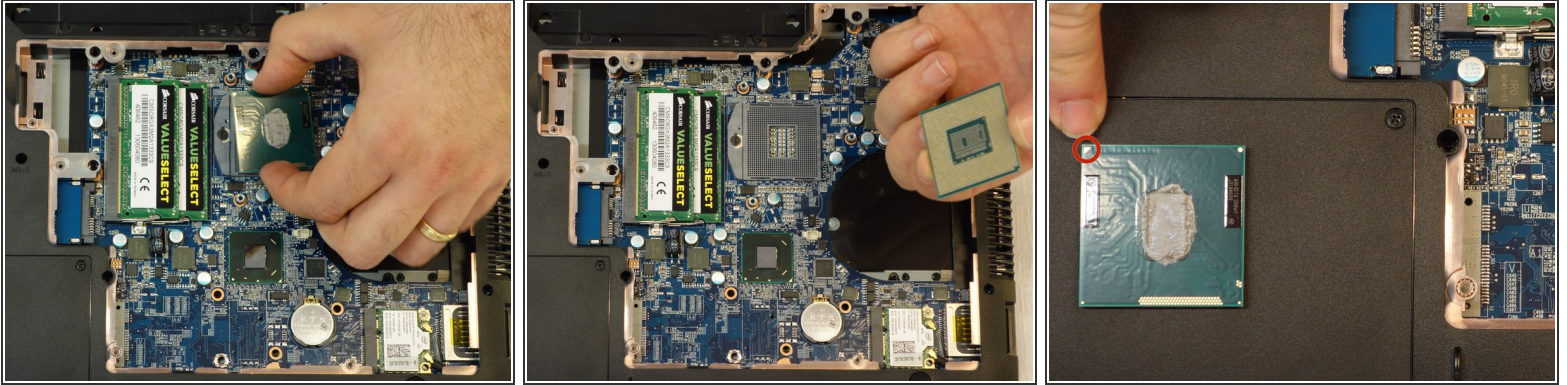
- Since the ventilator is mounted under the cover, its power supply cable must first be disconnected so that the cover can then be completely removed.

Step 5 — processor



- Using the Phillips # 1 screwdriver, unscrew the 3 mounting screws of the processor heat sink.
- ⓘ Note position of marker triangle as this will determine the positioning of the processor during replacement.
- Unlock the coupling system of the processor with a classic screwdriver.
- Make sure that you do not remove the heat-dissipating paste between the processor and the heat sink, as this is the only way to ensure that the processor is properly cooled.

Step 6



- Carefully disconnect the processor from its holder.
- Now place the processor aside, taking into account the position of the triangle.

For reassembly, follow the instructions in the reverse order