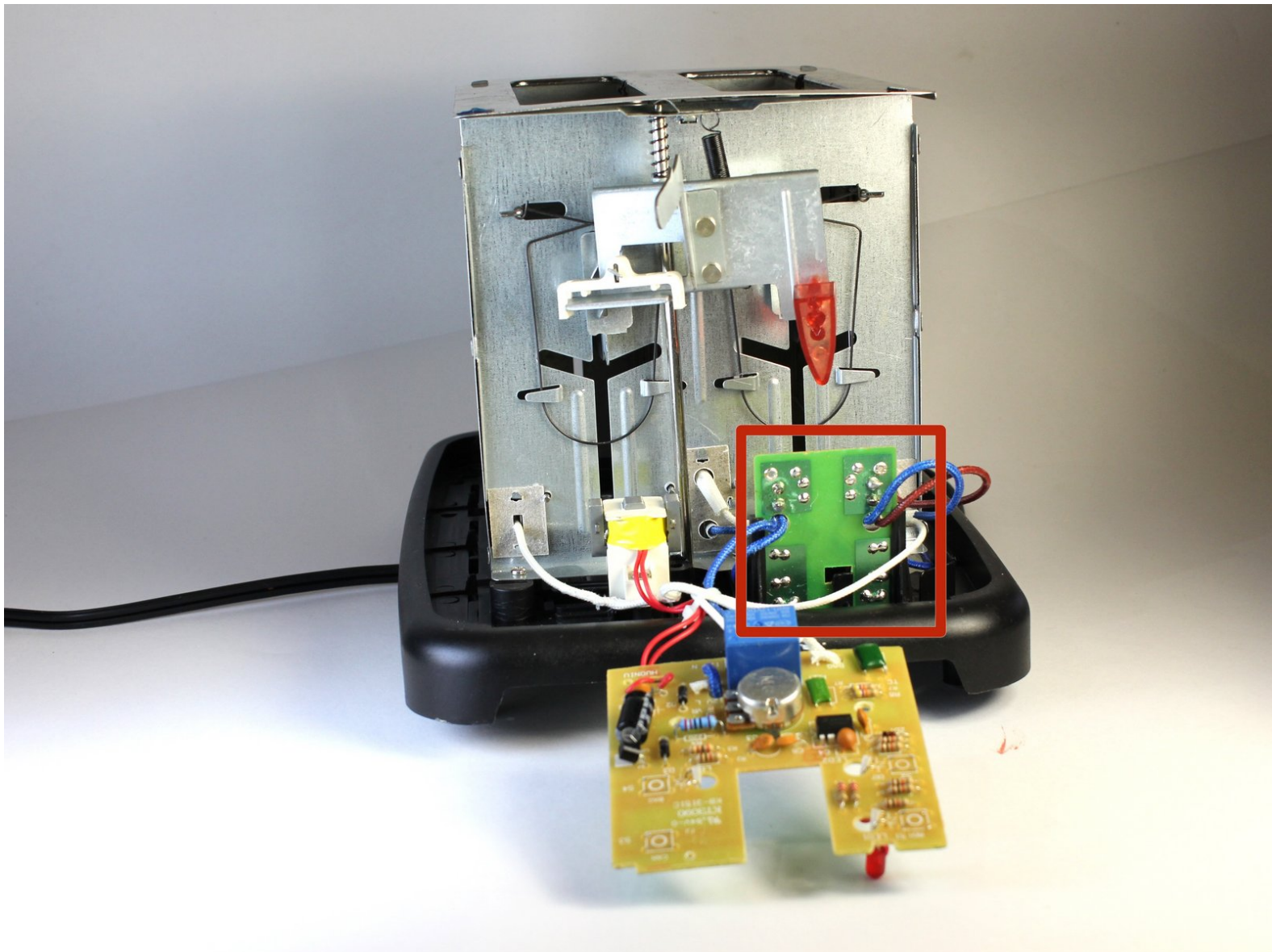




Professional Series PS77401 Chassis Replacement

This guide will cover replacing the chassis of a Professional Series PS77401 toaster. Disassembly of most of the major components on the toaster is required.

Written By: Kevin



INTRODUCTION

This guide will show how to remove the chassis from a Professional Series PS77401 toaster. The chassis may be damaged from a high height drop and may need replacing to allow even toasting. This guide is not a repair guide and requires a replacement toaster chassis.



TOOLS:

- [T7 Torx Screwdriver](#) (1)
 - [Phillips #2 Screwdriver](#) (1)
-

Step 1 — Shell



- ★ Make sure that the toaster is unplugged before attempting any sort of disassembly!

Step 2



- Grip the black plastic lever nub firmly and *carefully* remove it from the metal lever. Use one hand to hold the toaster in place while you pull the lever nub with the other.

⚠ If this is the first time detaching this piece, it will take some effort to remove. Be careful as pulling too hard can cause damage to the inner lever mechanism.

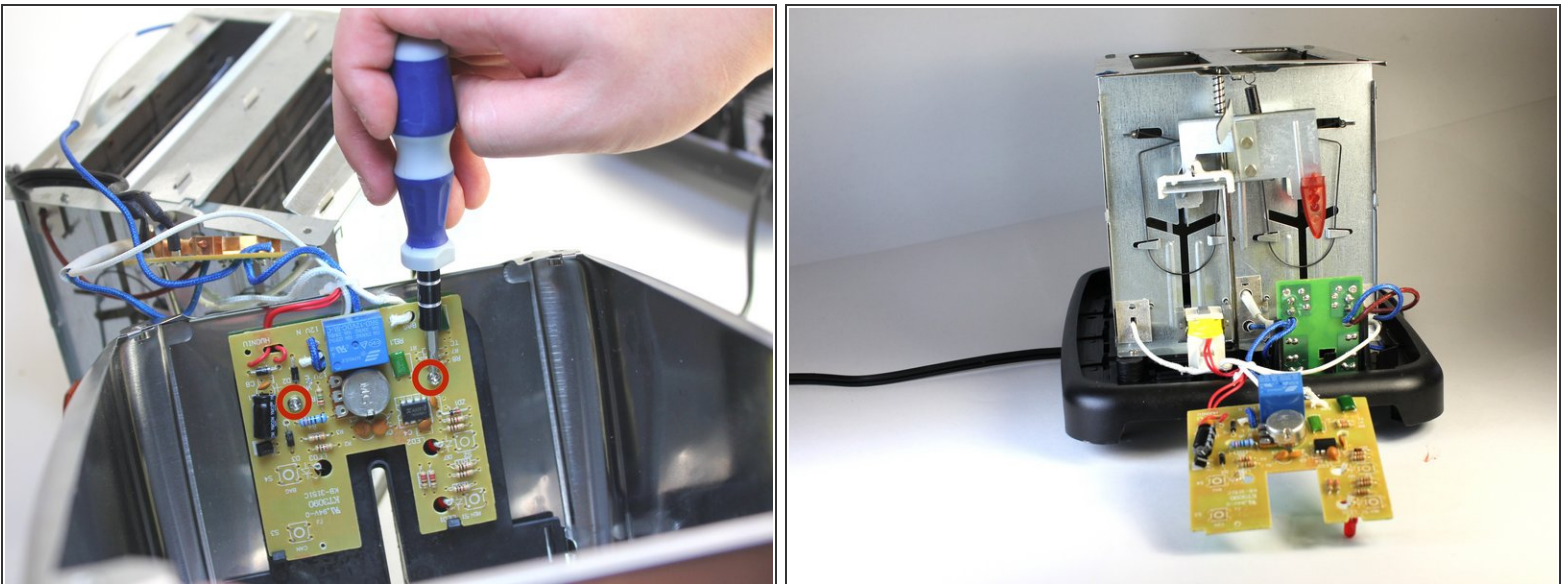
Step 3



- Flipping the toaster upside down, use a T7 Torx Screwdriver to remove the four 10mm screws that keep the outer shell attached.
- Flip the toaster back over and slide off the shell making sure to slip the toaster lever (now without the black plastic nub) through the lever opening in the shell.

i The outer shell should now only be connected by its internal wiring.

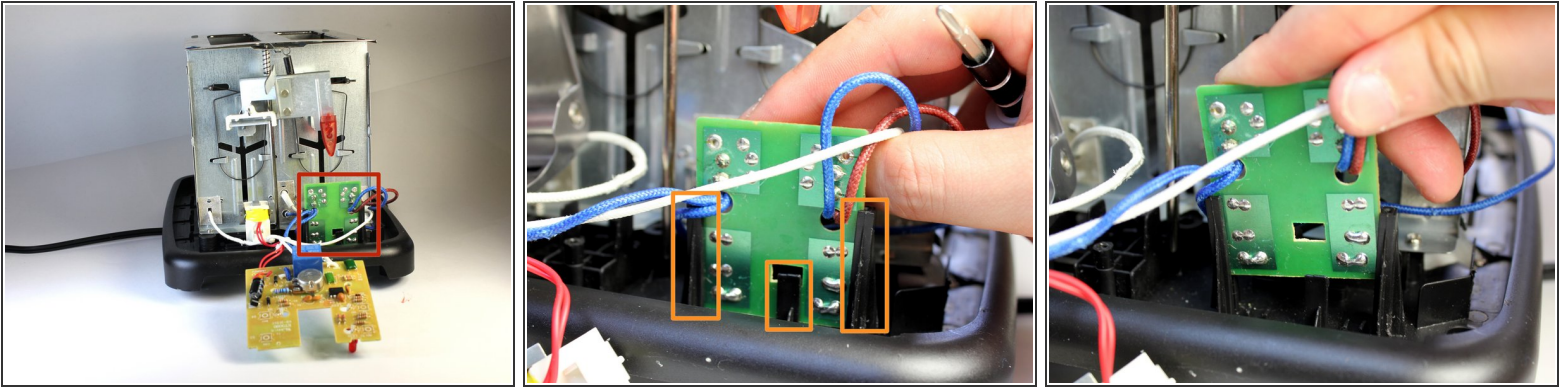
Step 4



- Locate and remove the two 8mm screws that attach the circuit board (located inside of the shell) from the shell itself using the Phillips #2 screwdriver.

i The shell should now be completely separated from the rest of the toaster.

Step 5 — Chassis



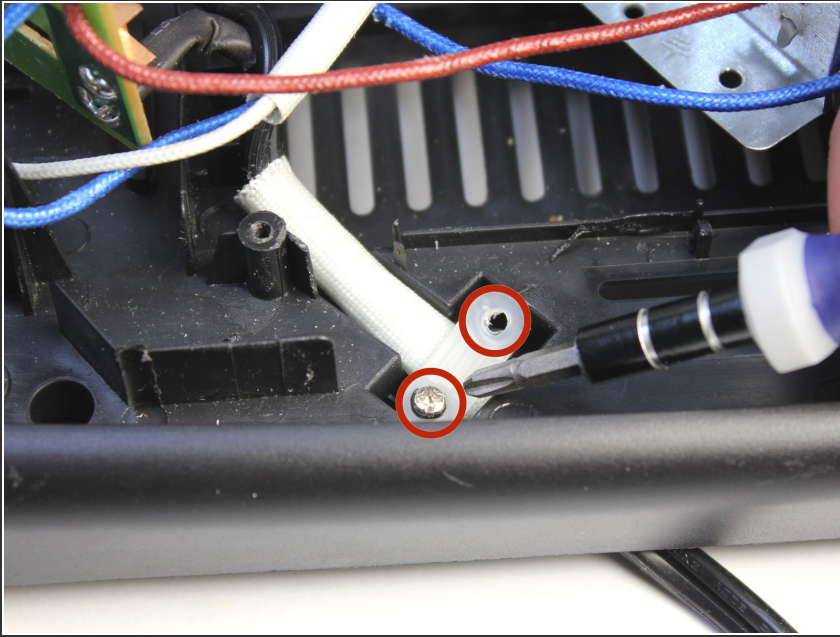
- Locate the small circuit board attached to the base of the toaster.
- To remove the circuit board, pull apart the two side tabs while releasing the middle tab simultaneously.
- Pull the circuit board out of the slot.

Step 6



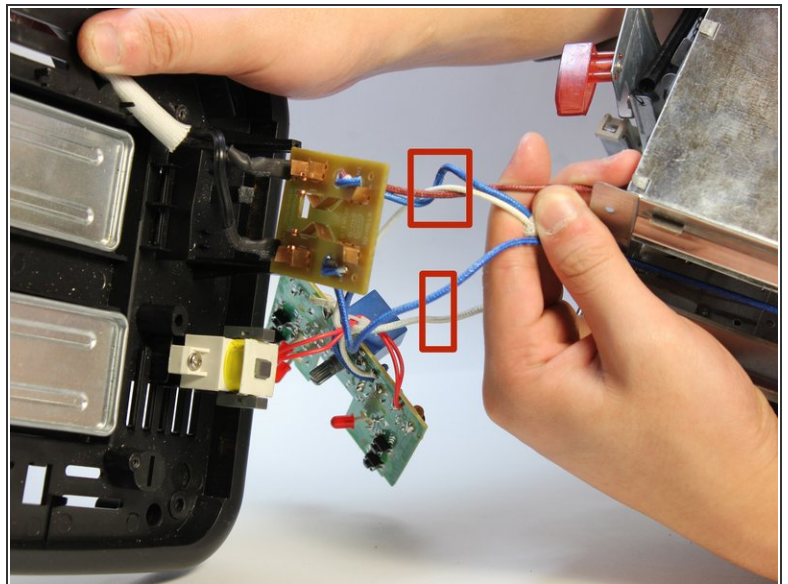
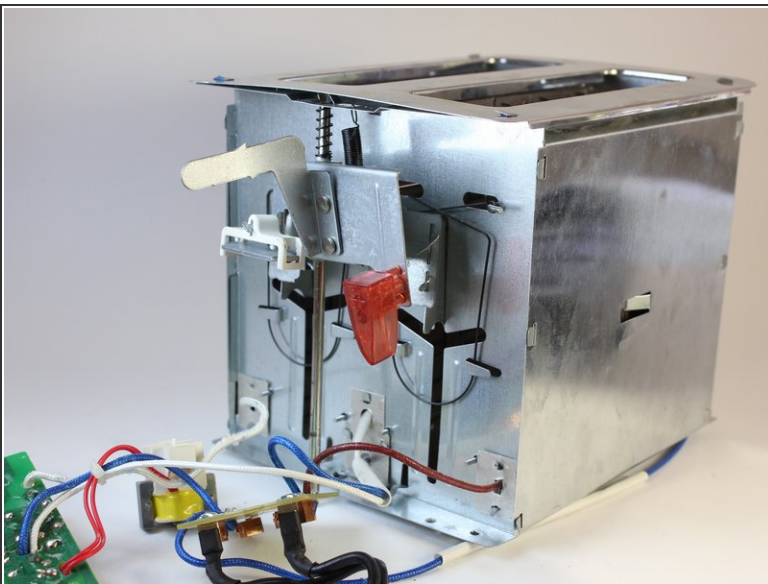
- Using a Phillips #2 screwdriver, remove the front two 8mm screws attaching the chassis to the base.
- Flip the toaster around and proceed to remove the two remaining 8mm screws.
- The toaster chassis should now only be connected to the base via wiring.

Step 7



- There are two phillips 8mm head screws holding the power cable to the base.
- Remove these screws to release the power cable.

Step 8



- The following wires must be disconnected to be able to remove the chassis: Blue x2, White x2, Bronze x1
- ⓘ Disconnecting the cables in the middle is recommended to be able to reconnect new wires from a new chassis easily.

To reassemble your device, follow these instructions in reverse order.