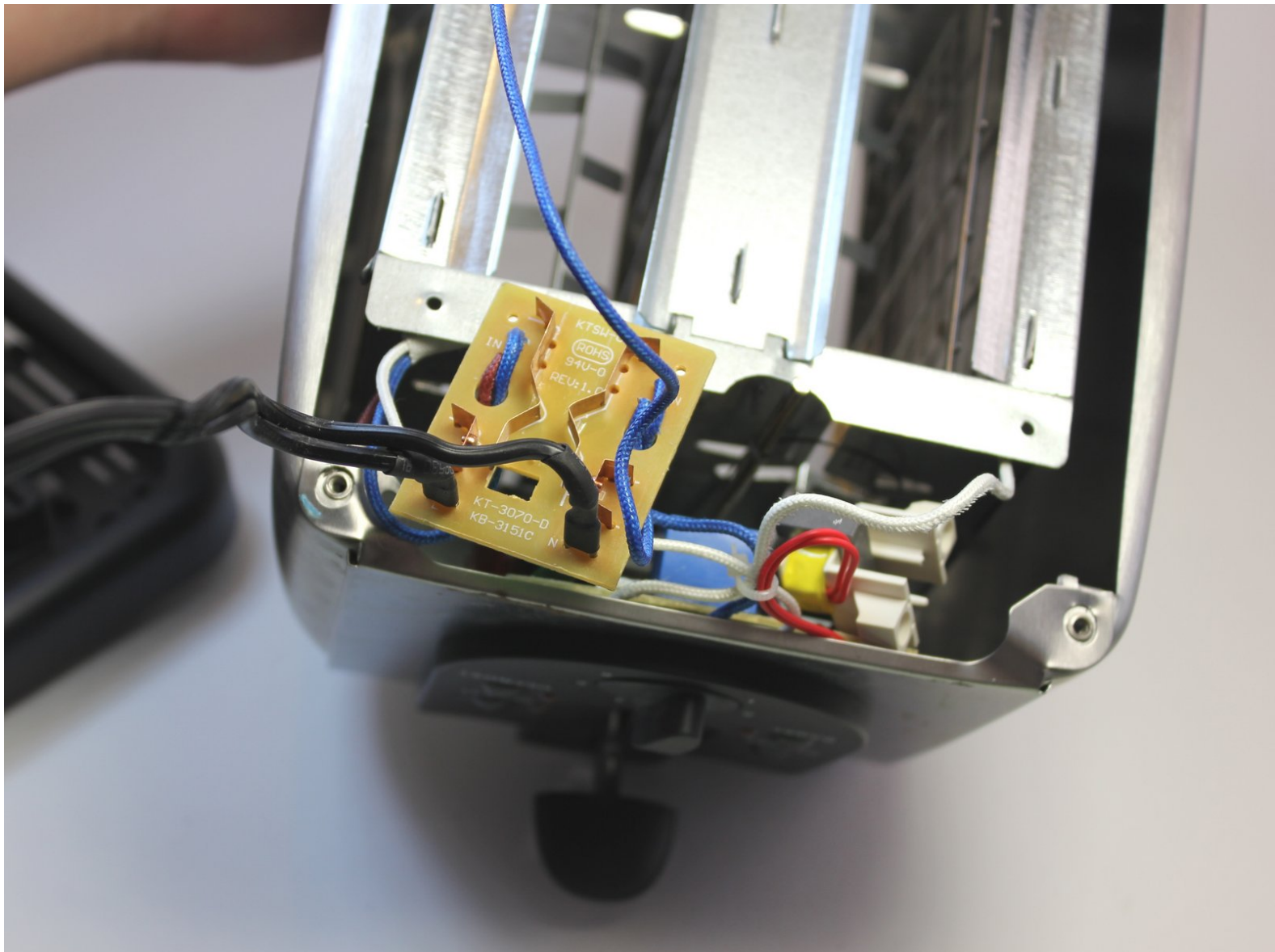




Professional Series PS77401 Power Cord Replacement

Replace the power cord and turn your bread to toast once again

Written By: Zachary



INTRODUCTION

In this guide we will open up the toaster and remove the old faulty power cord.



TOOLS:

- [Soldering Workstation](#) (1)
 - [Phillips #2 Screwdriver](#) (1)
 - [T7 Torx Screwdriver](#) (1)
-

Step 1 — Shell



- ★ Make sure that the toaster is unplugged before attempting any sort of disassembly!

Step 2



- Grip the black plastic lever nub firmly and *carefully* remove it from the metal lever. Use one hand to hold the toaster in place while you pull the lever nub with the other.

⚠ If this is the first time detaching this piece, it will take some effort to remove. Be careful as pulling too hard can cause damage to the inner lever mechanism.

Step 3



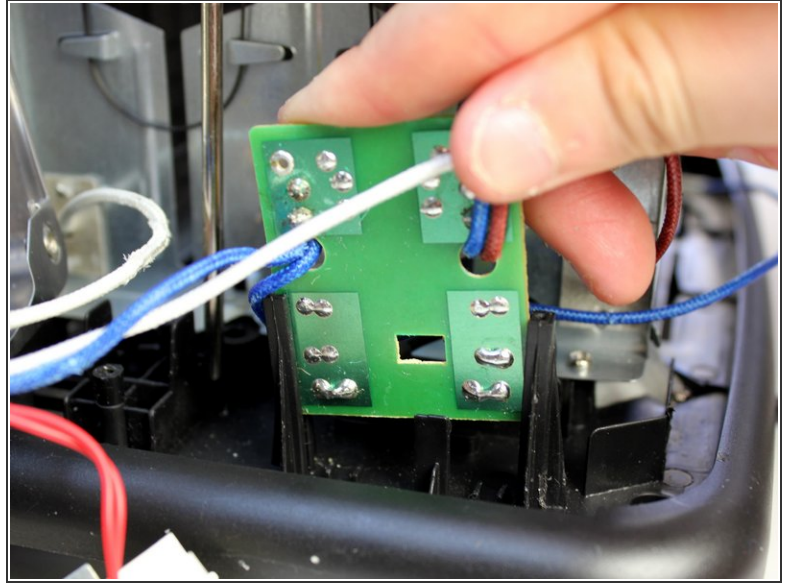
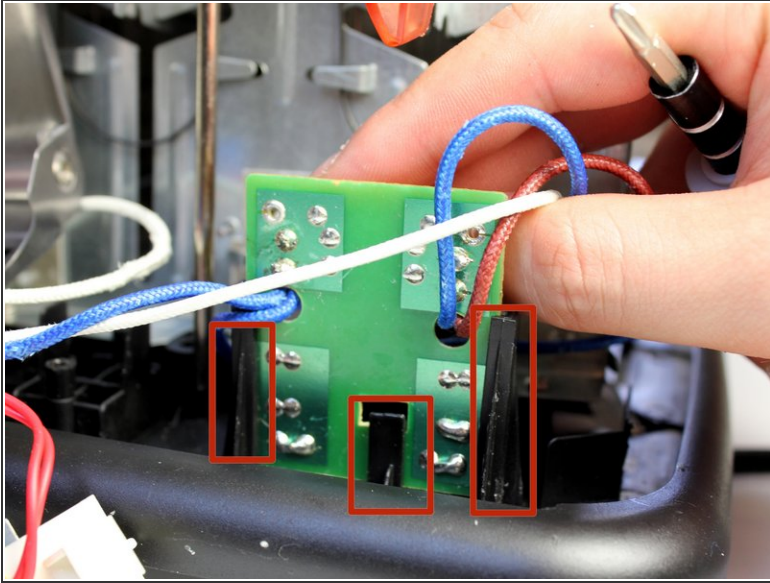
- Flipping the toaster upside down, use a T7 Torx Screwdriver to remove the four 10mm screws that keep the outer shell attached.
 - Flip the toaster back over and slide off the shell making sure to slip the toaster lever (now without the black plastic nub) through the lever opening in the shell.
- i** The outer shell should now only be connected by its internal wiring.

Step 4



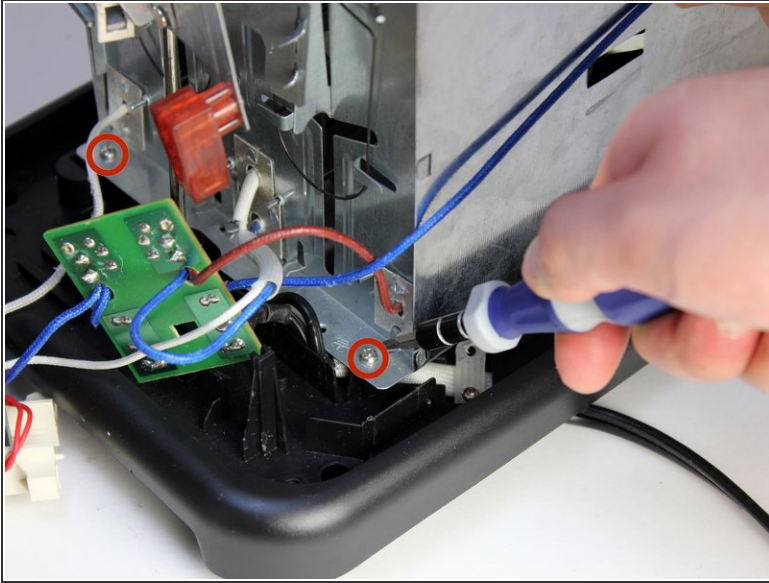
- Locate and remove the two 8mm screws that attach the circuit board (located inside of the shell) from the shell itself using the Phillips #2 screwdriver.
- i** The shell should now be completely separated from the rest of the toaster.

Step 5 — Power Cord



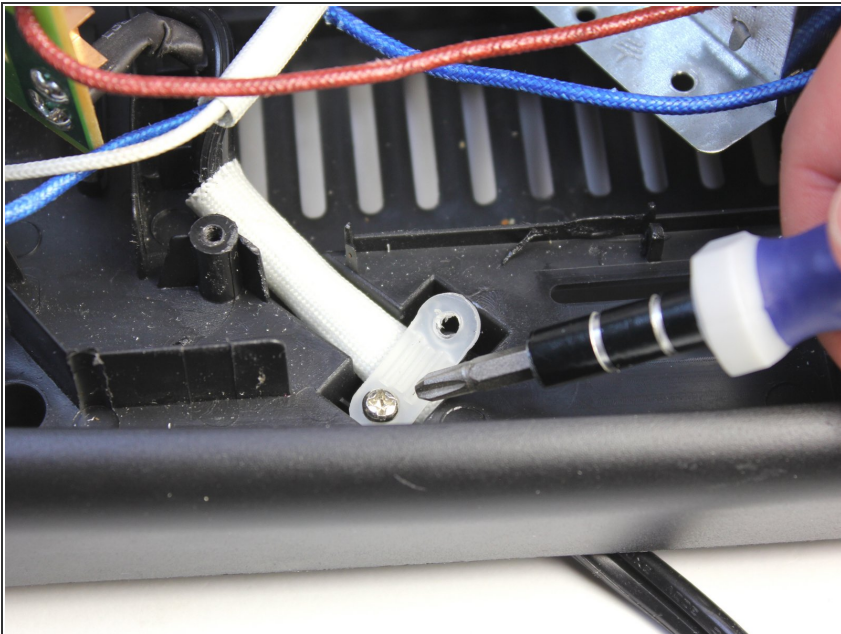
- Remove the small circuit board by pulling on the two side tabs while simultaneously releasing the middle clip.
- Slide the small circuit board out of it's clips.

Step 6



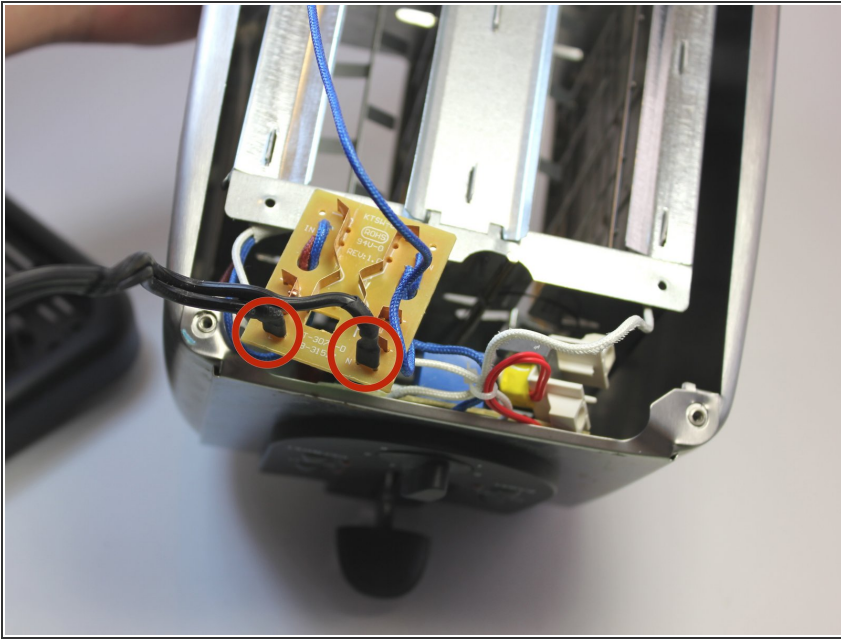
- Using a Philips #2 screwdriver, remove the front two 8mm screws attaching the chassis to the base.
- Flip the toaster around and proceed to remove the two remaining 8mm screws.

Step 7



- Upon removing the chassis, look in the toaster base to find the little white tab holding the power cord in place. Use a Philips screwdriver to remove the two 10mm screws.

Step 8



- De-solder the two power cord wires that are connected to the small circuit board.
- Solder on replacement power cord.
- ⓘ If you're unsure of how to solder here is a helpful guide: [Soldering Guide](#)

To reassemble your device, follow these instructions in reverse order.