



Projector - Vivitek D855ST DMD Chip Board Replacement

A common point of failure with these projectors is over time you will see white dots resembling a starfield on the projection screen.

Written By: dustind



INTRODUCTION

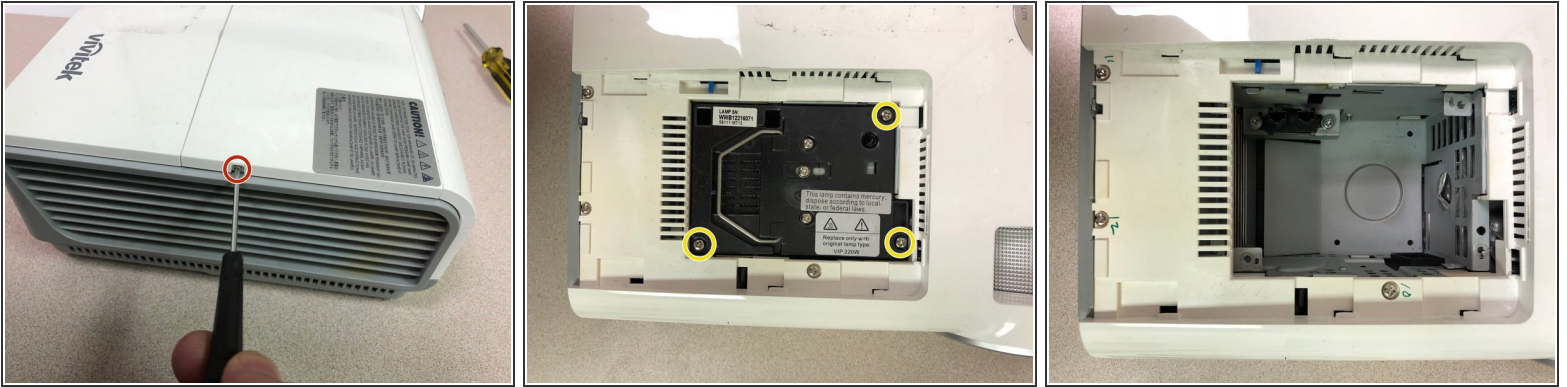
This guide will show you have to replace the DMD board chip.



TOOLS:

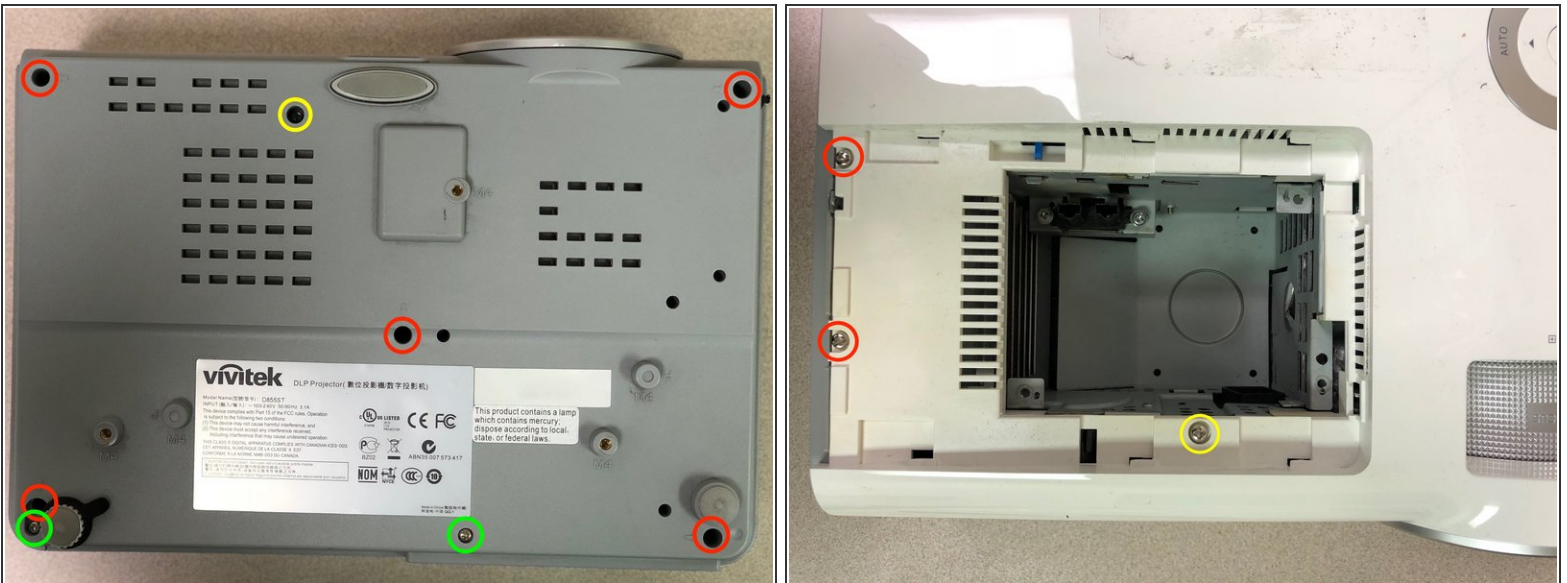
- [Spudger](#) (1)
 - [Phillips #0 Screwdriver](#) (1)
 - [Small Needle Nose Pliers](#) (1)
 - [Phillips 3 Screwdriver](#) (1)
-

Step 1 — Projector - Vivitek D855ST DMD Chip Board Replacement



- First grab a 00 Phillips screwdriver remove the lamp cover.
- Then loosen the 3 captive screws holding the lamp in the projector with a standard Phillips screwdriver.

Step 2 — Remove the housing



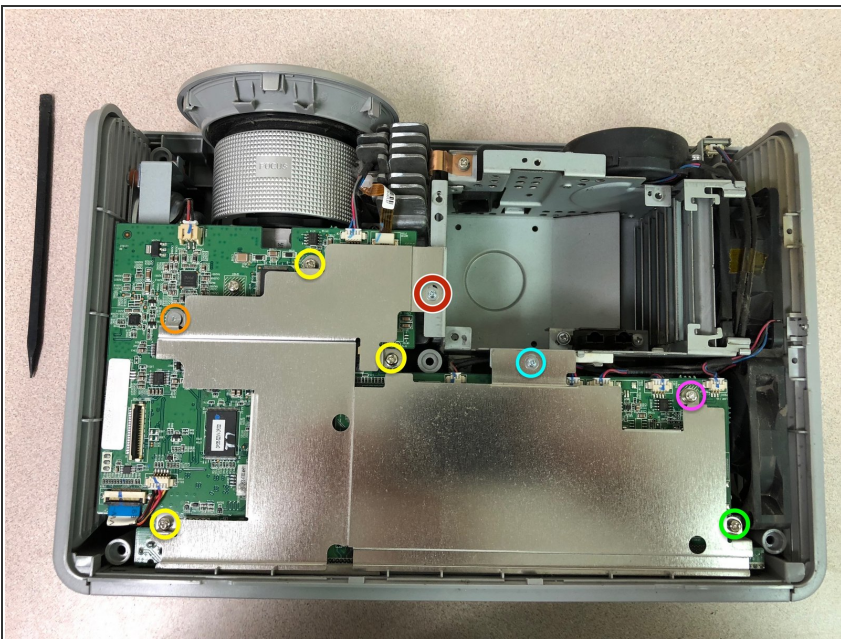
- Remove the following 8 screws securing the bottom housing.
- Remove 3 screws securing the top housing.

Step 3 — Remove the top housing



- Use the flat end of a spudger to pry the top housing around the sides.
- Slightly lift from the front and push it toward the rear of projector to free the mounting tabs.

Step 4 — Remove top shield



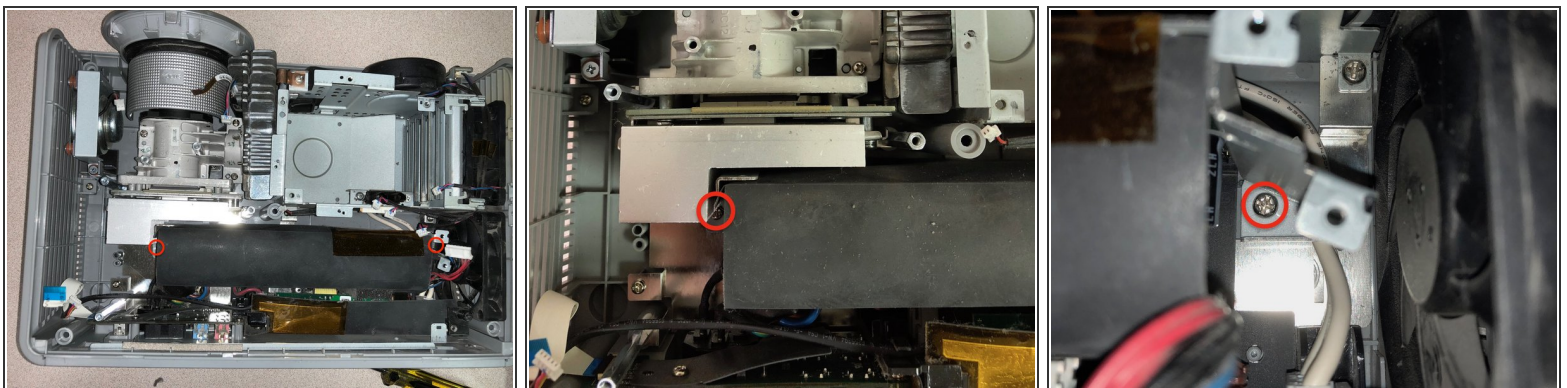
- Remove the following 8 screws of various sizes on the top shield.
- Remove the screw in red very last. It's tight and after removing the others, you can swivel the shield enough to loosen that screw without stripping it.

Step 5 — Remove main board



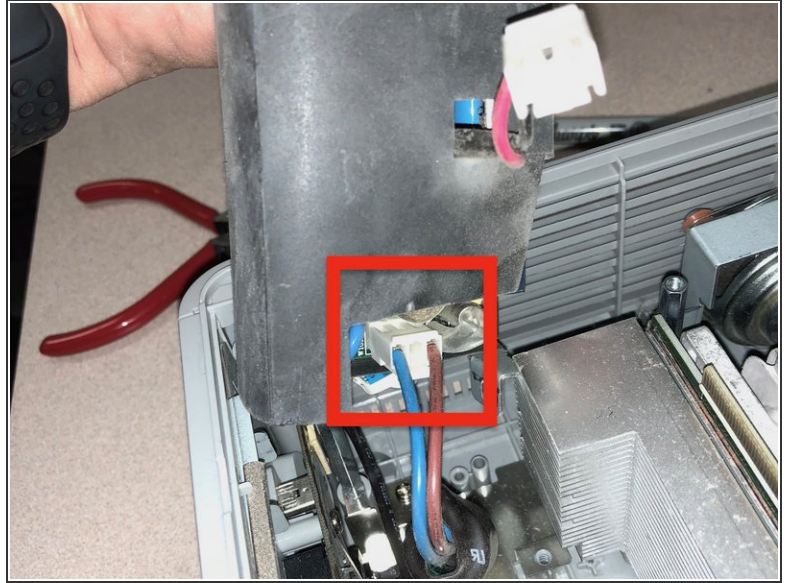
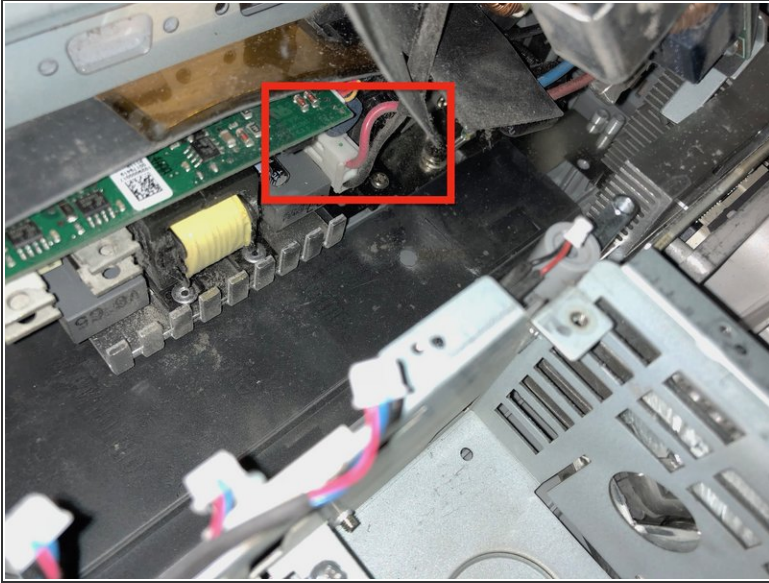
- Remove one screw and the carefully disconnect 2 ribbon cables and 8 cable connectors from the main board.
- Remove the 6 video cable standoffs from the rear of the projector. Needle-nose pliers will loosen them enough then a Torx-8 driver fits perfect to loosen them the rest of the way
- Carefully push the rear of the video ports inward to push the board enough forward and lift up.
- Lift up and disconnect the cable connector on the bottom of the board to the power supply.

Step 6 — Remove power supply



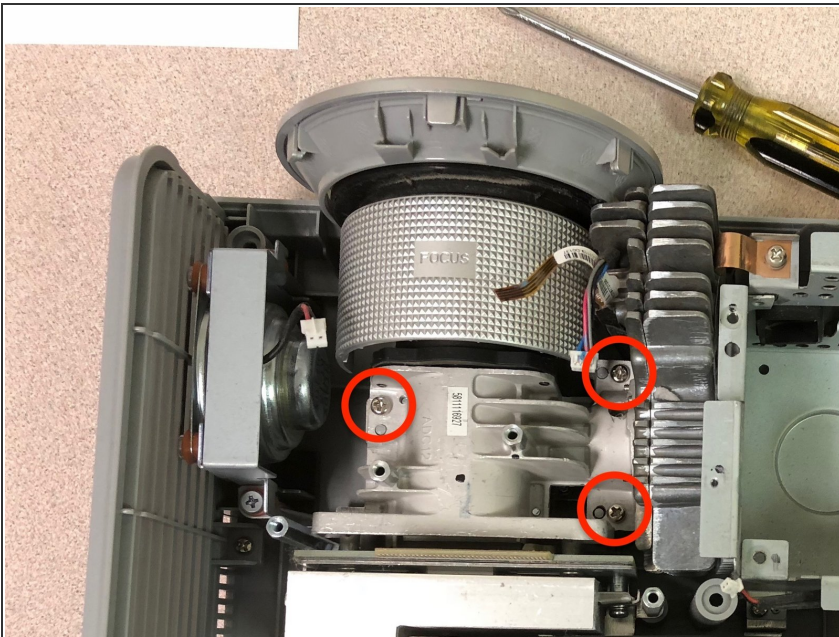
- Remove 2 screws on the right and left sides toward the bottom securing the power supply to the chassis.

Step 7 — Disconnect the power supply



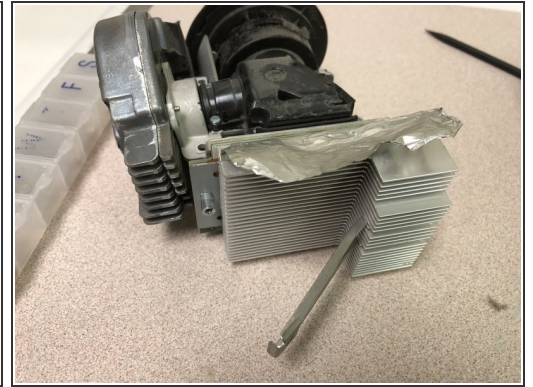
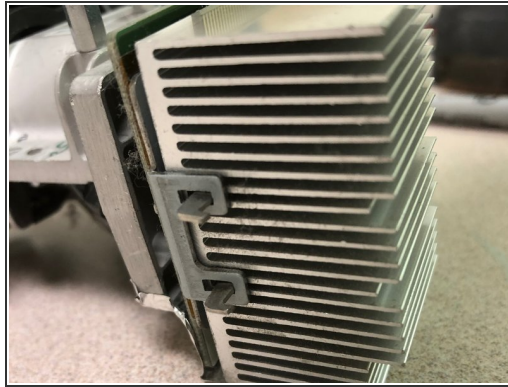
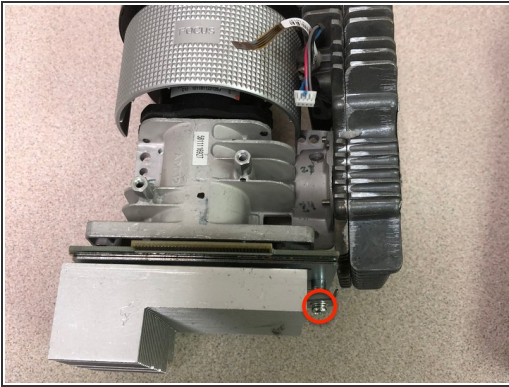
- Disconnect the cable connectors from the left and right sides under the power supply

Step 8 — Remove the lens unit



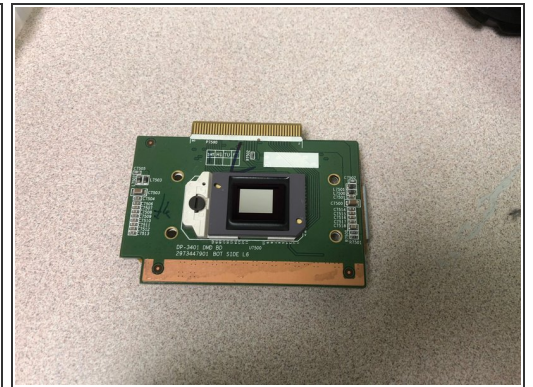
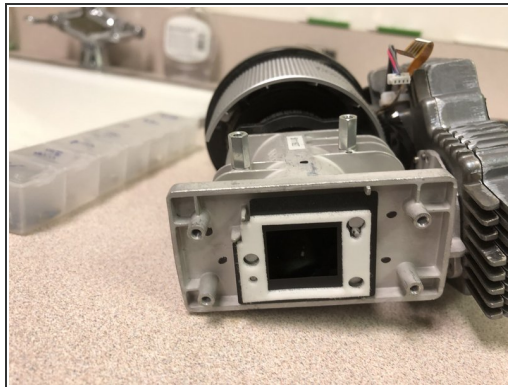
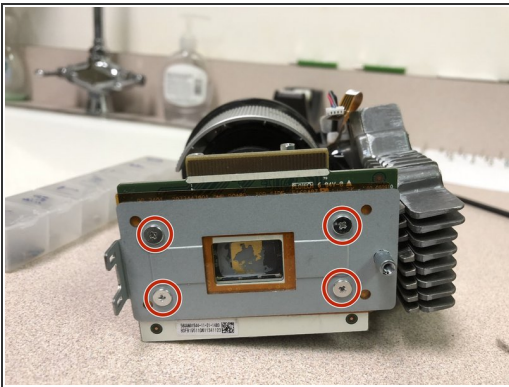
- Remove the following 3 identical screws to remove the lens unit.

Step 9 — Remove the heatsink



- Remove one screw and the tension bar holding the heatsink to the DMD Board
- Pull back the shielding tape from the heatsink to the lens unit.

Step 10 — Access to DMD board



- Remove 4 screws securing the DMD board to the lens unit
- Pull it gently apart. It is held by thermal paste.

To reassemble your device, follow these instructions in reverse order.