



Promowide SP1790 Charging Port Replacement

Replace the charging port of your Promowide SP1790 wireless speaker.

Written By: Joseph Malone



INTRODUCTION

This guide will instruct you on how to replace the charging port in this speaker. This will ensure the performance of the device's wireless function.



TOOLS:

- [Soldering Iron](#) (1)
- [Phillips Screwdriver](#) (1)
- [Wire Stripper](#) (1)



PARTS:

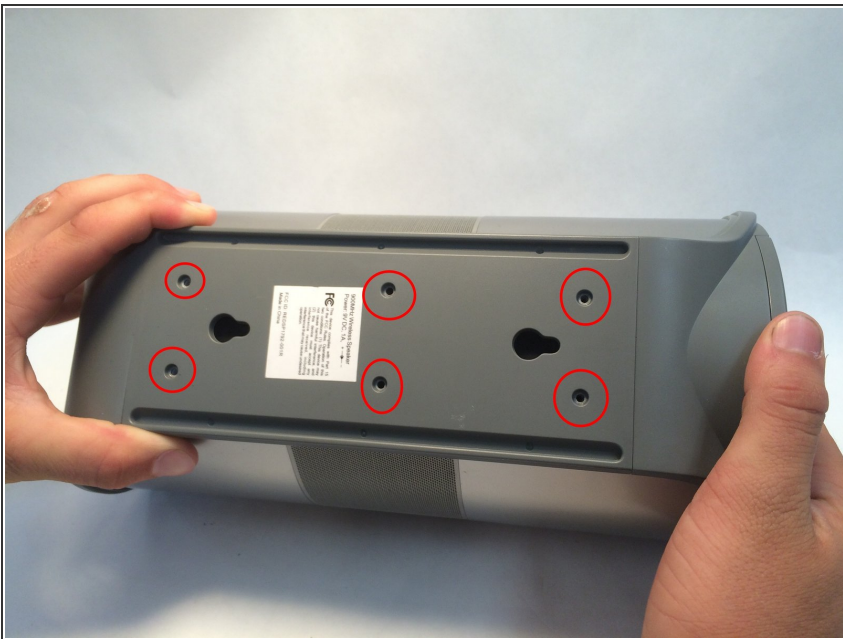
- [Wire](#) (1)

Step 1 — Battery Wire



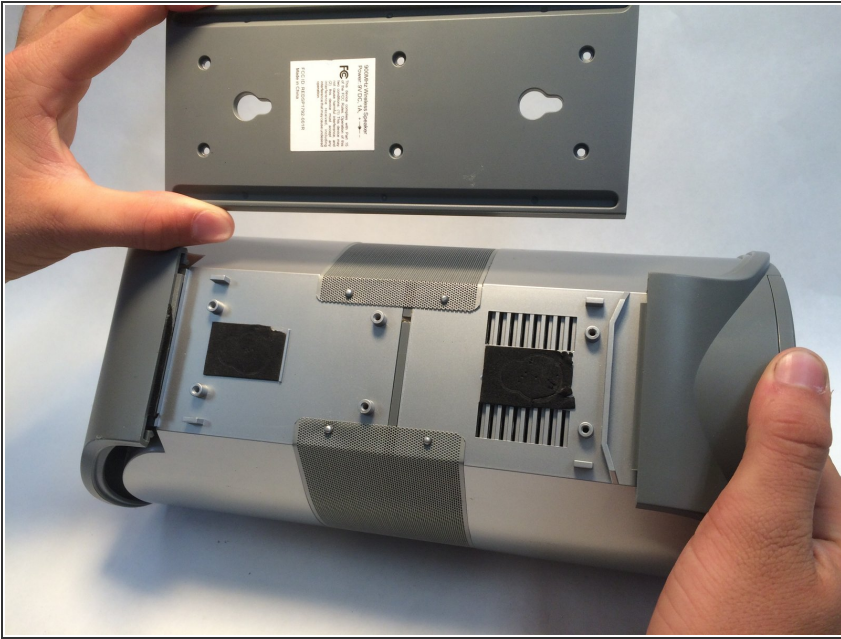
- Locate the six screws on the back of the speaker.

Step 2



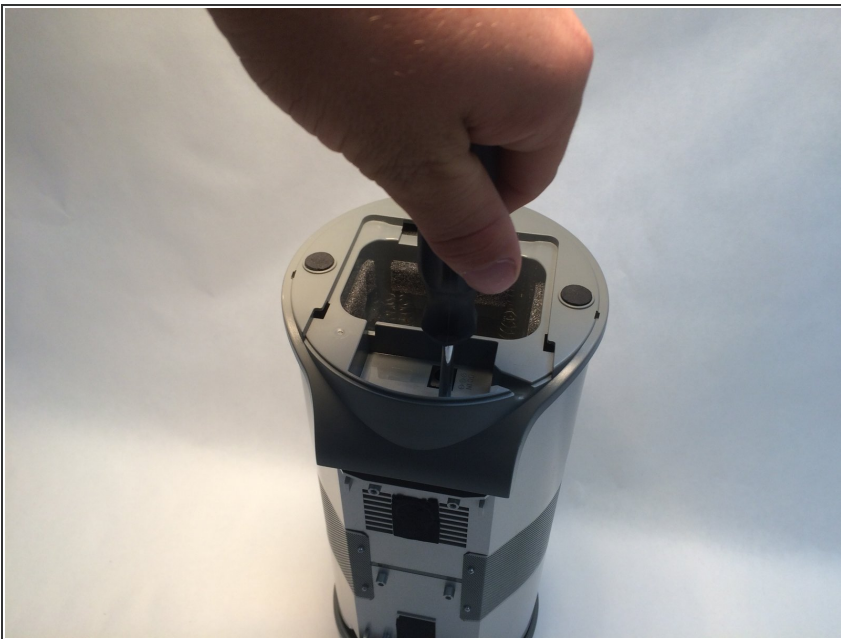
- Unscrew each of the six screws, then set them aside.

Step 3



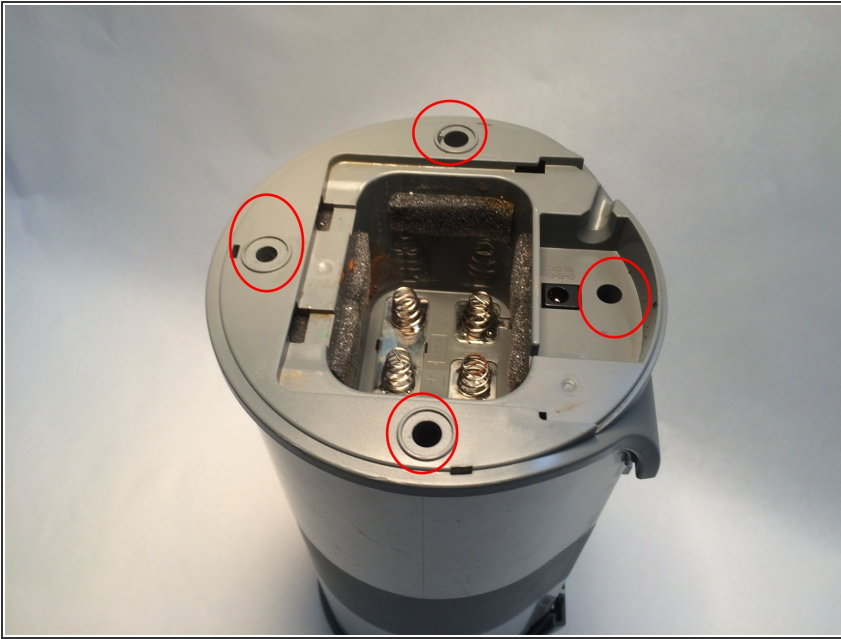
- Gently remove the back cover of the speaker.

Step 4



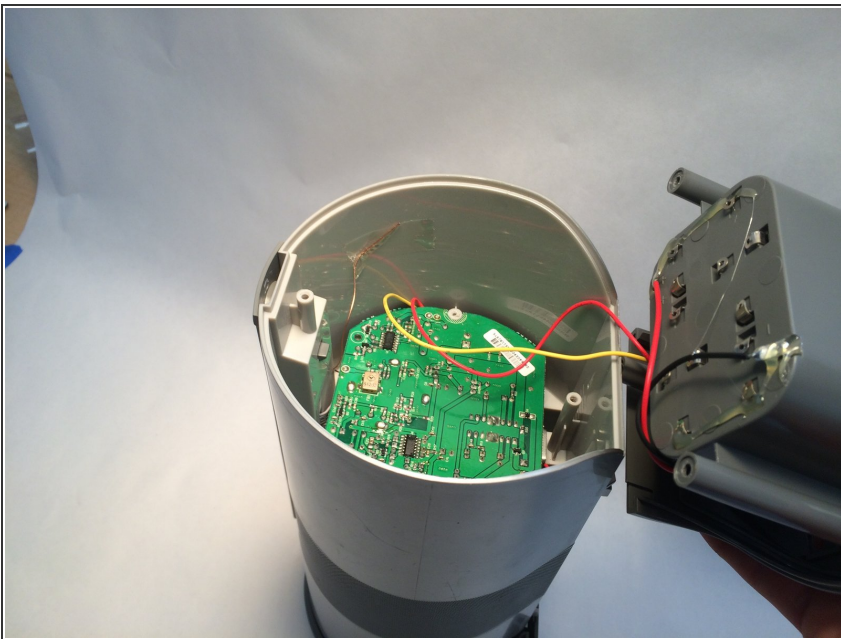
- Place the speaker upside down.
- Remove the battery cover located in the center of the speaker.

Step 5



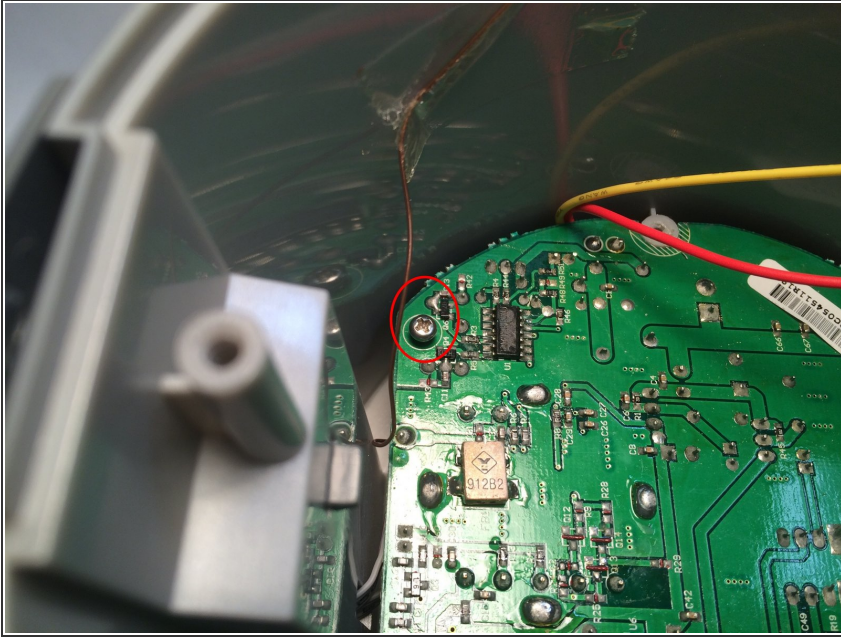
- Locate and remove the four screws under each of the pads near the power socket.

Step 6



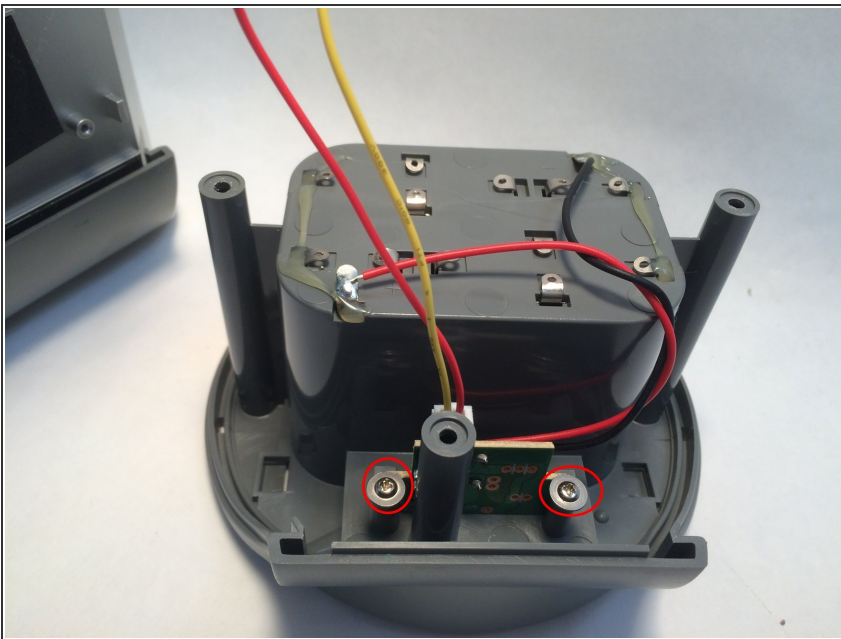
- Gently remove the bottom.
- Do **NOT** pull out or damage wires.

Step 7



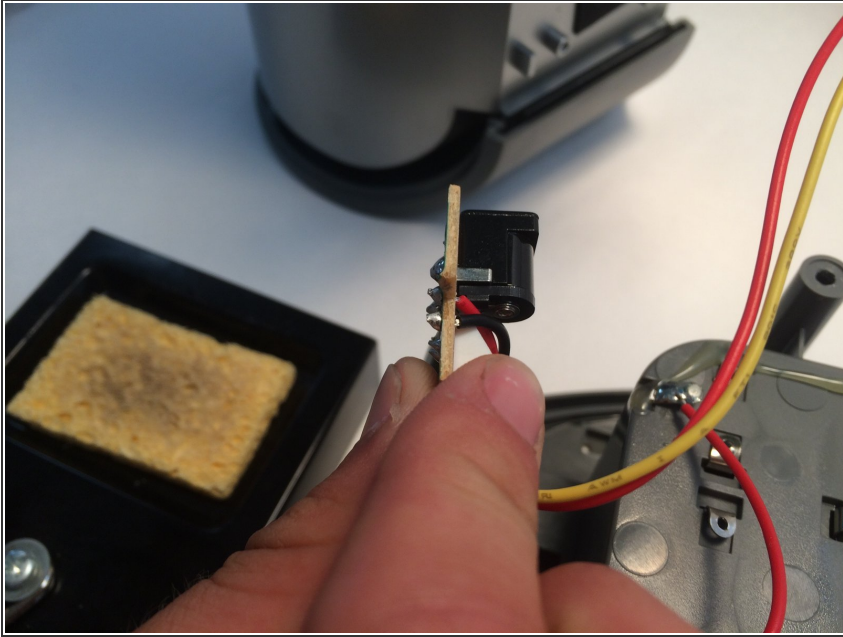
- Remove the single motherboard screw.

Step 8



- Remove both of the screws holding the power socket to the bottom chassis.

Step 9



- Desolder and remove the old wire.
- ☑ Insert the new wire and solder it into place.

To reassemble your device, follow these instructions in reverse order.