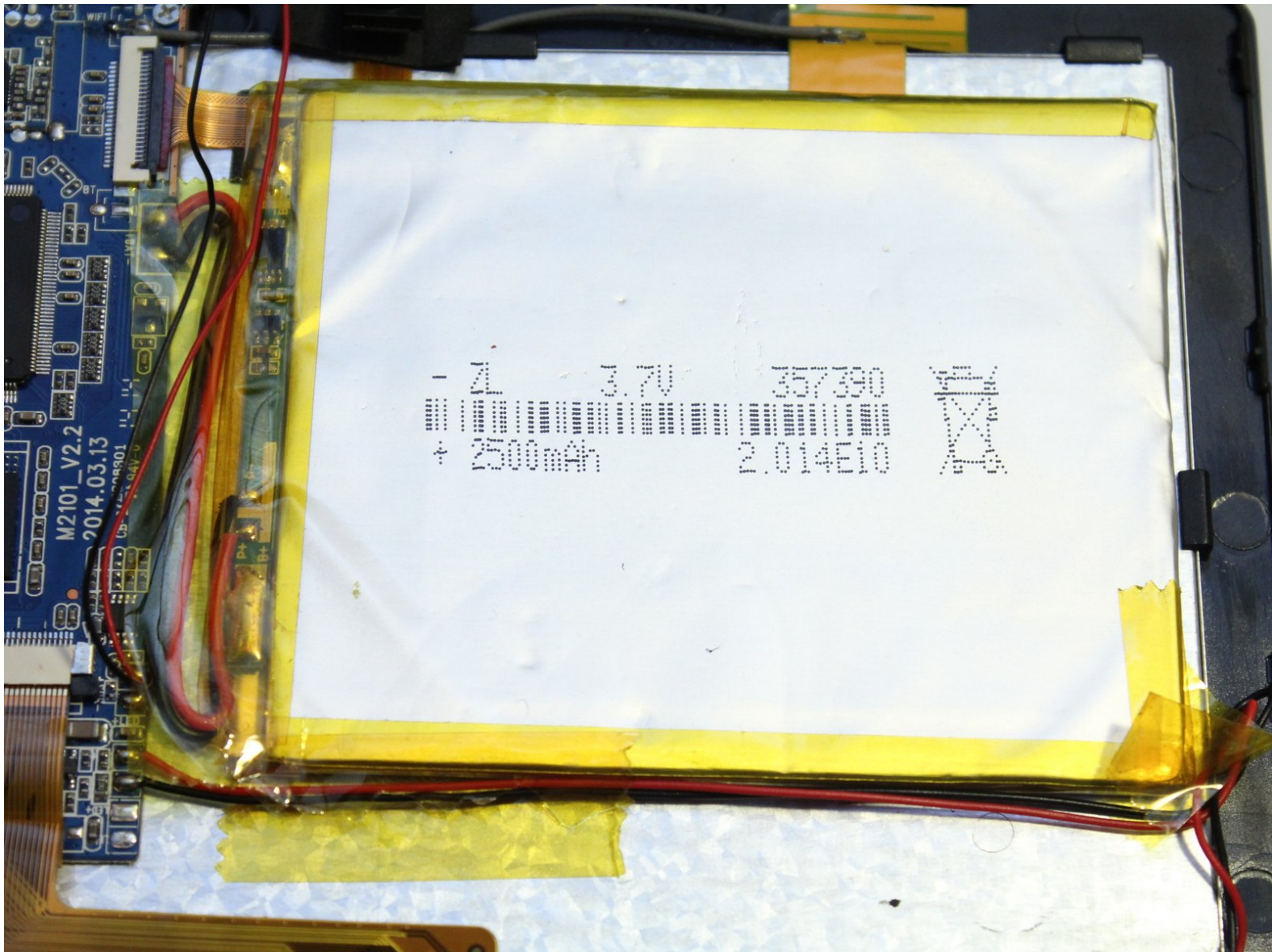




# ProntoTec Axius Battery Replacement

This guide will describe how replace the battery in the ProntoTec Axius tablet

Written By: Antonio Irons



---

## INTRODUCTION

After repeated use of electronic devices, it is common for the battery to lose charge and eventually die. This guide outlines how to access your device's battery and replace it.

---

### TOOLS:

- [Portable Soldering Iron](#) (1)
  - [iFixit Opening Tools](#) (1)
  - [Solder](#) (1)
  - [Soldering Iron](#) (1)
-

## Step 1 — Battery



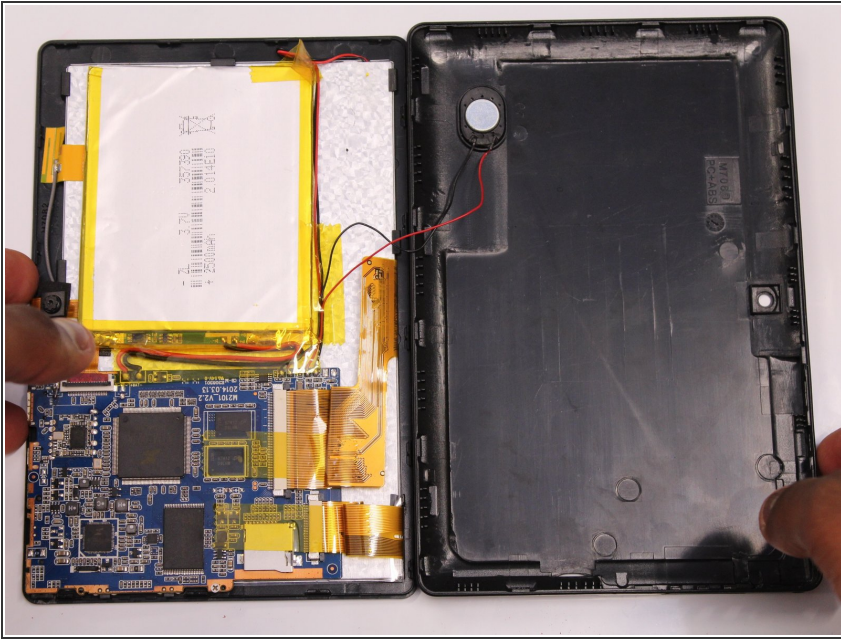
- ⚠ Make sure the device is completely turned off before you begin taking it apart to avoid electrocution risks.
- Place the tablet face-up on a flat table

## Step 2



- Starting near the headphone port, fit the flat end of the spudger in between the screen and back case.
- Pry the back case from the screen around each point on the device to release the clips securing the case halves to each other.

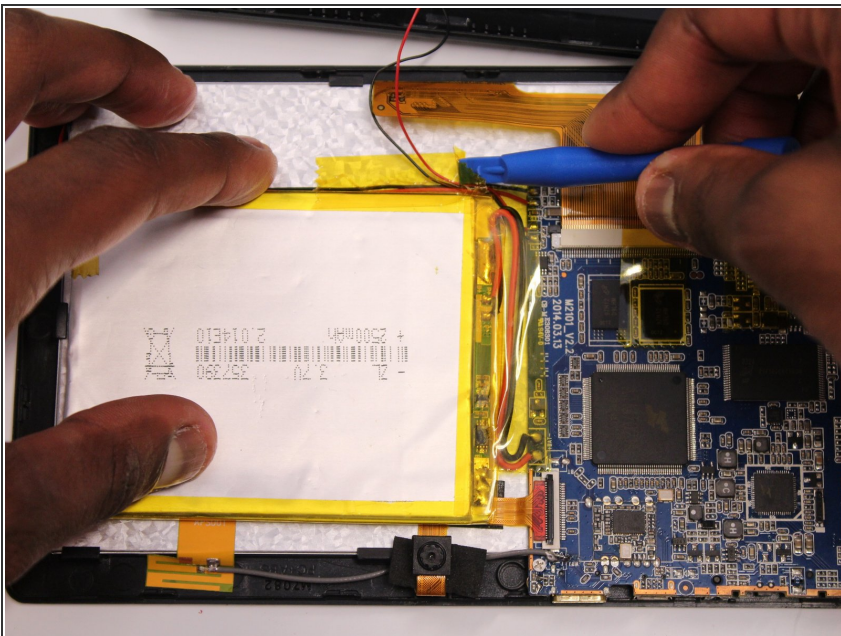
### Step 3



- Gently remove the back case of the device and lay it in a flat surface as shown in the photo.

**⚠ Make sure not to sever the wires (red and black) connected to the speaker that is located in the back case.**

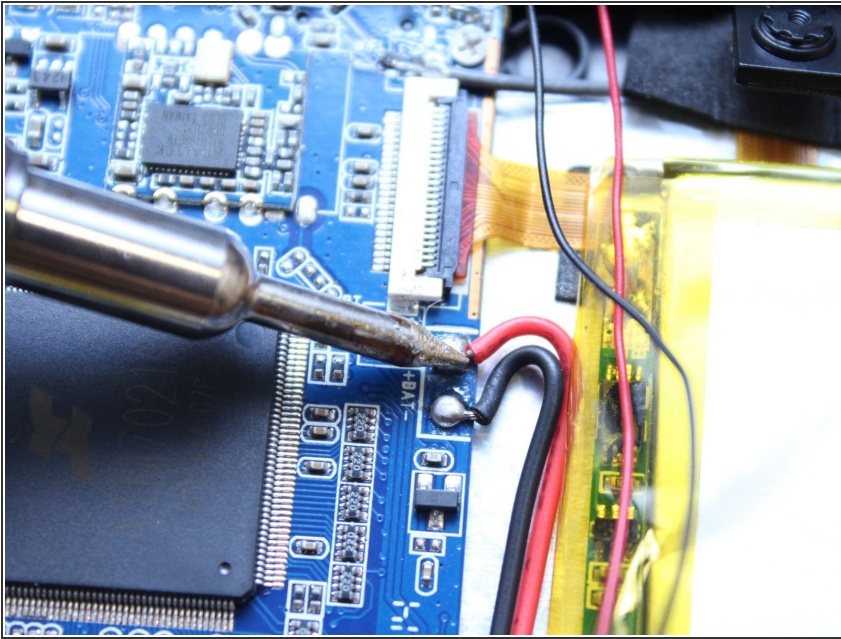
### Step 4



- Using a spudger remove all the tapes that touches the battery.

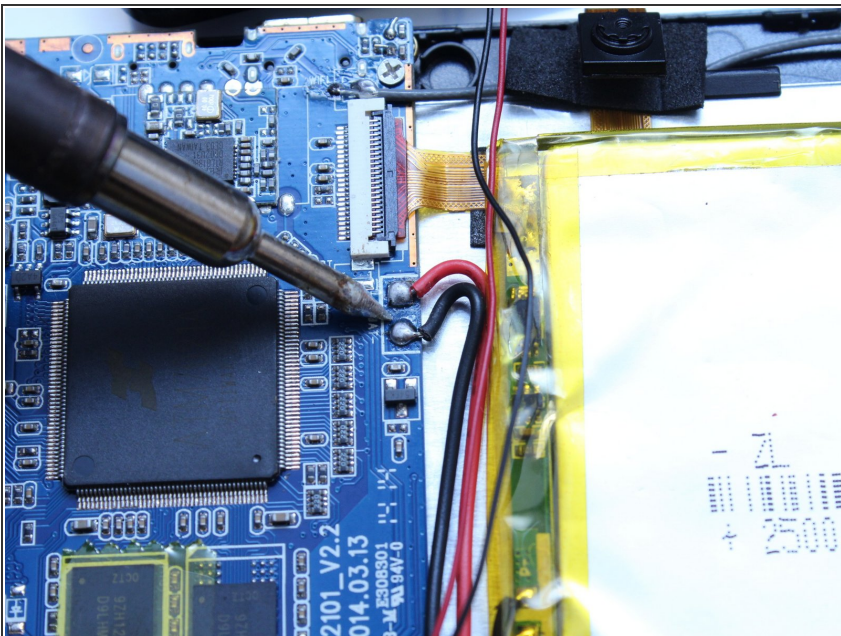
**⚠ Be careful not to cut any wires that are under the tapes**

## Step 5



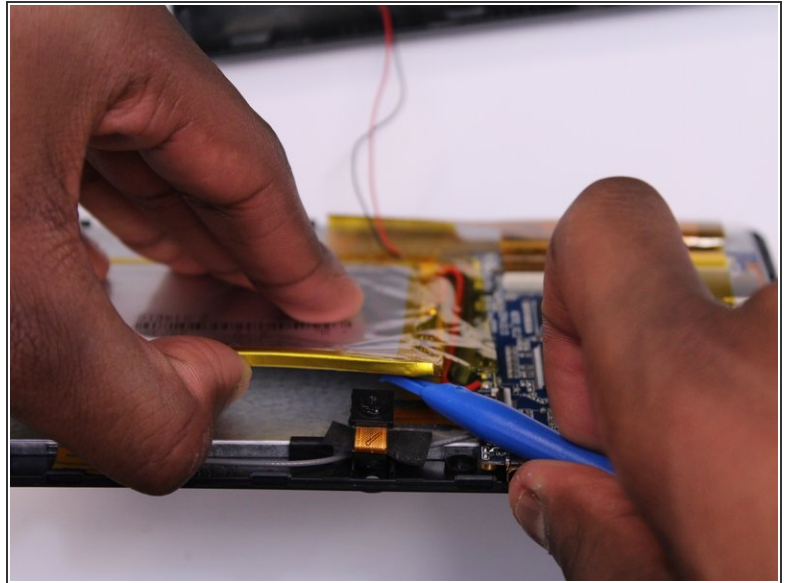
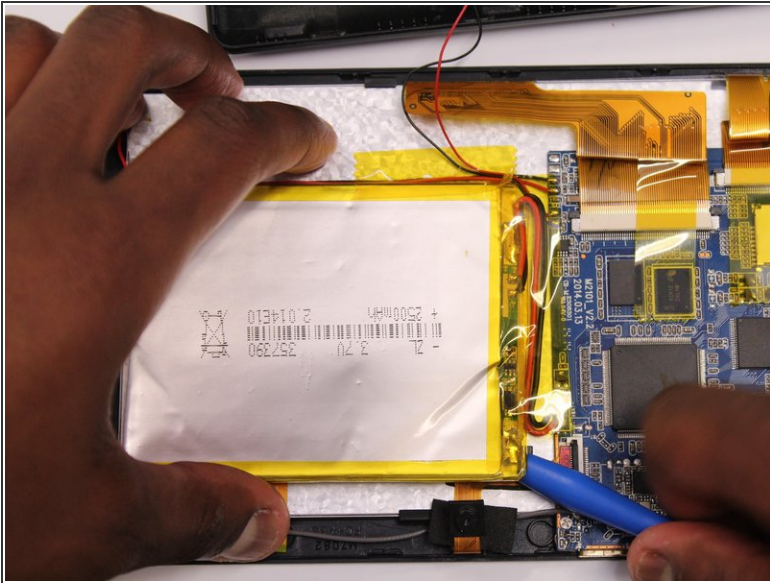
- Using a soldering iron, heat up the contact point of the red wire from the battery and the motherboard.
  - When the solder begins to melt, use pliers to gently pull the wire from the motherboard
- ⚠ Don't leave the soldering iron too long on top of the wire so it doesn't melt any other component in the motherboard or surrounding the area.

## Step 6



- Repeat Step 5 on the black wire connecting the battery to the motherboard as shown in the photo.
- ⚠ Don't leave the soldering iron too long on top of the wire so it doesn't melt any other component in the motherboard or surrounding the area.

## Step 7



- Using a spudger, gently pry the battery from the back of the screen to remove it from the device.

To reassemble your device, follow these instructions in reverse order.