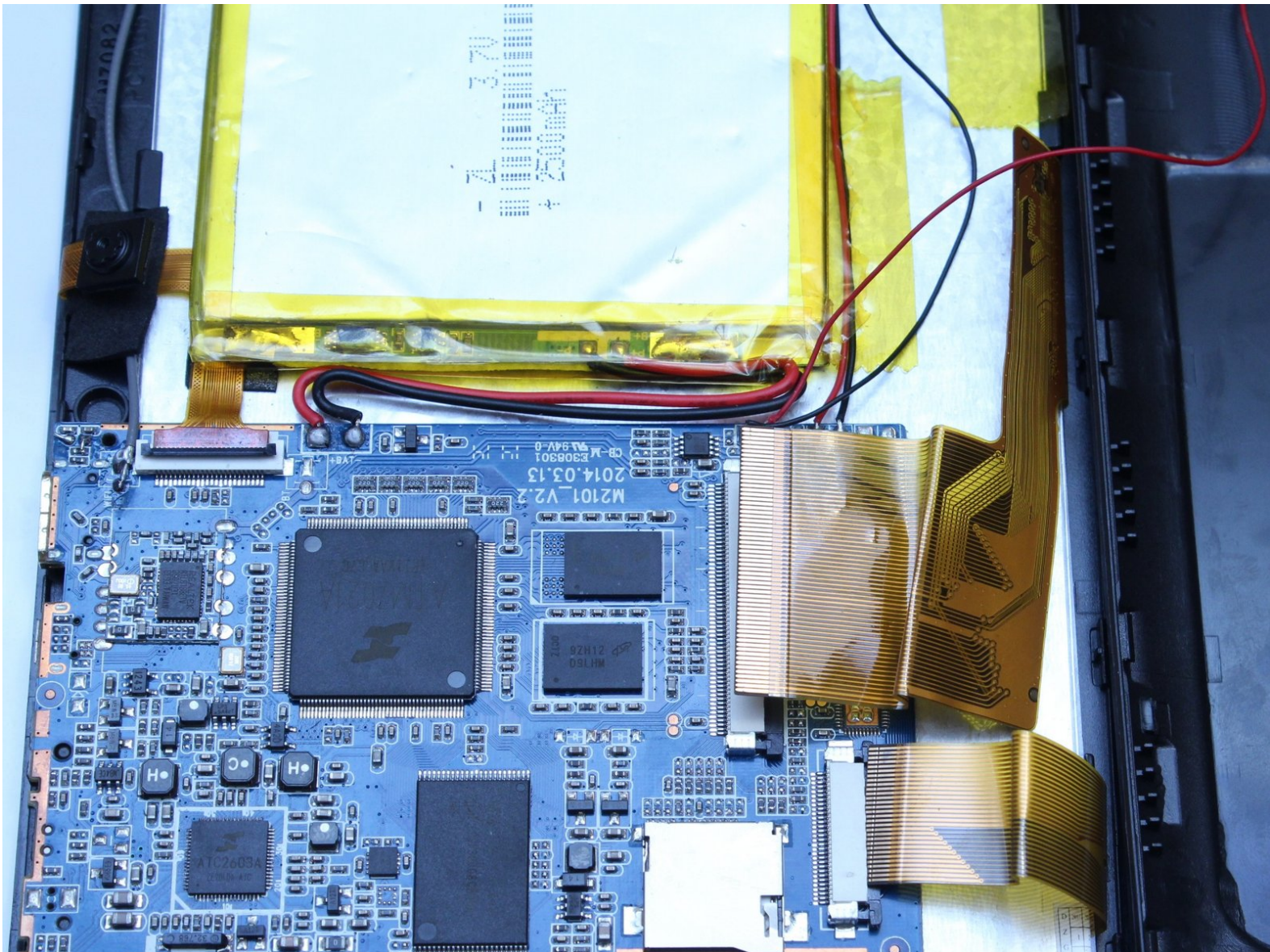




ProntoTec Axis Motherboard Replacement

This guide will demonstrate how to replace the motherboard on the ProntoTec Axis

Written By: Estelle Hatem



INTRODUCTION

All electrical components of the ProntoTec Axius tablet are connected to the motherboard. Water damage, dropping, and any other physical damage can cause the motherboard to short or malfunction; rendering the device unusable. This guide will highlight how to disconnect the motherboard from the other components of the device for replacement.



TOOLS:

- [Phillips #00 Screwdriver](#) (1)
 - [iFixit Opening Tools](#) (1)
 - [Solder](#) (1)
 - [Soldering Iron](#) (1)
-

Step 1 — Motherboard



- ⚠ Make sure the device is completely turned off before you begin taking it apart to avoid electrocution risks.
- Place the tablet face-up on a flat table.

Step 2



- Starting near the headphone port, fit the flat end of the spudger in between the screen and back case.
- Pry the back case from the screen around each point on the device to release the clips securing the case halves to each other.

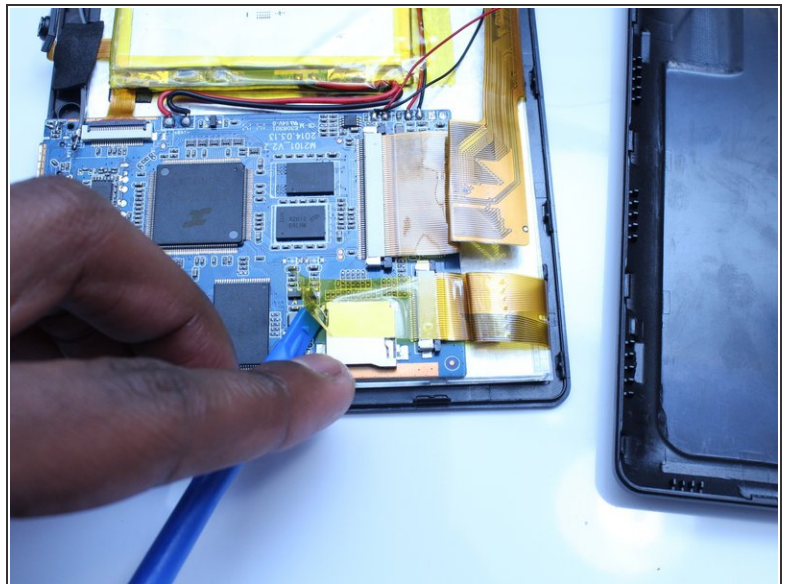
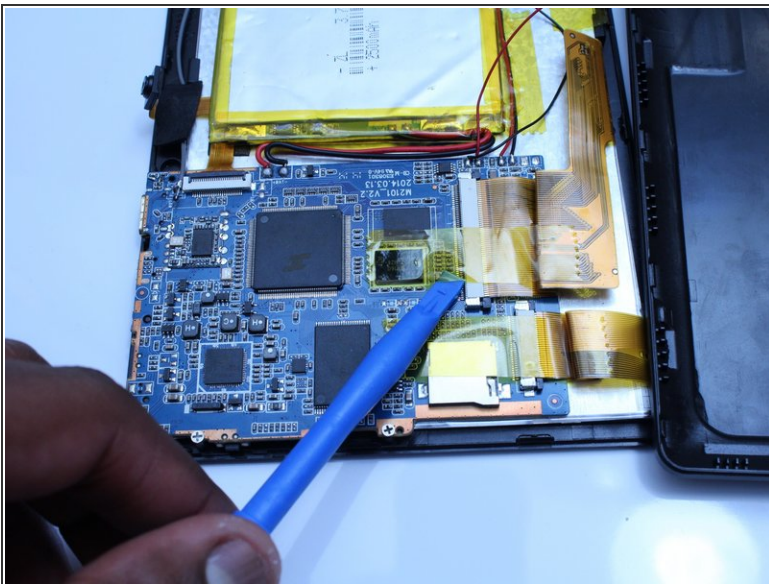
Step 3



- Gently remove the back case of the device and lay it in a flat surface as shown in the photo.

⚠ Make sure not to sever the wires (red and black) connected to the speaker that is located in the back case.

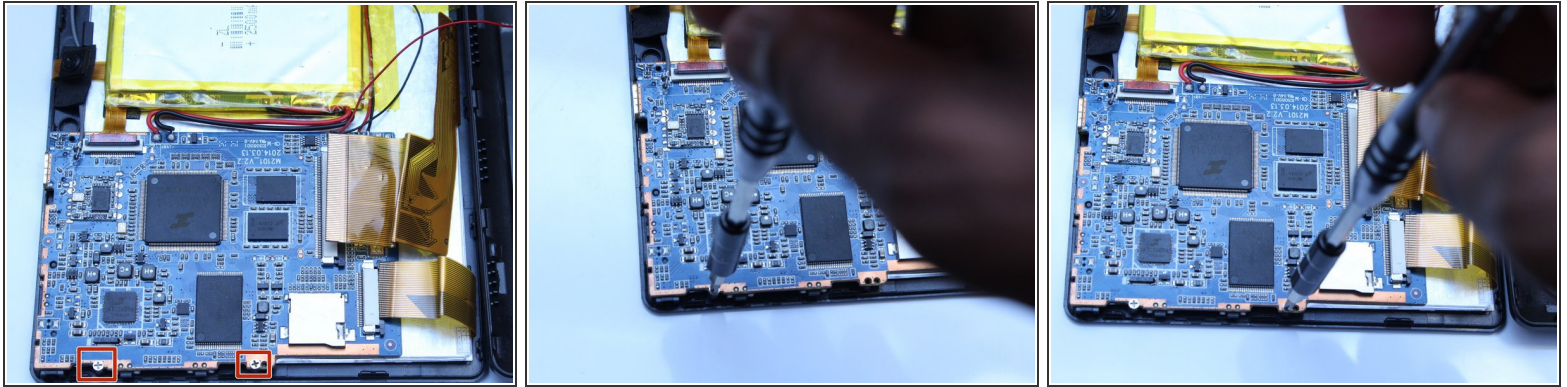
Step 4



- Remove only the yellow tape that touches the motherboard

⚠ Be careful not to cut or damage the wires (red and black) that connect the battery to the motherboard.

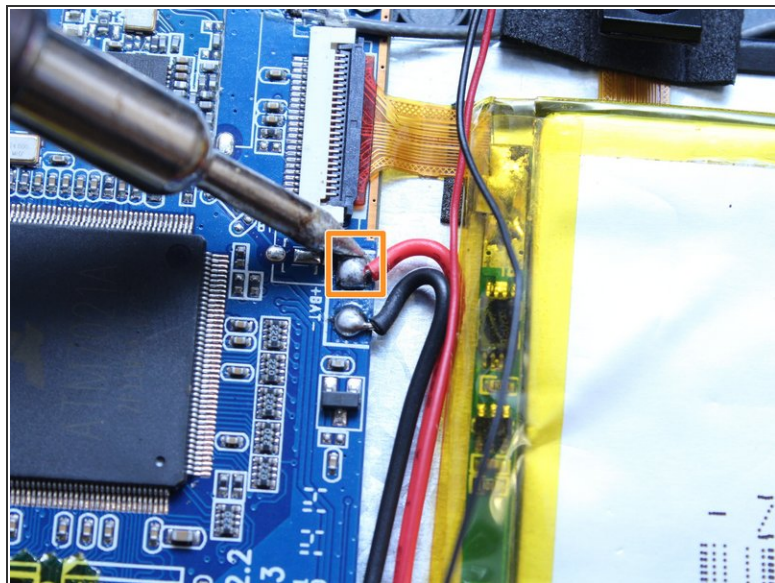
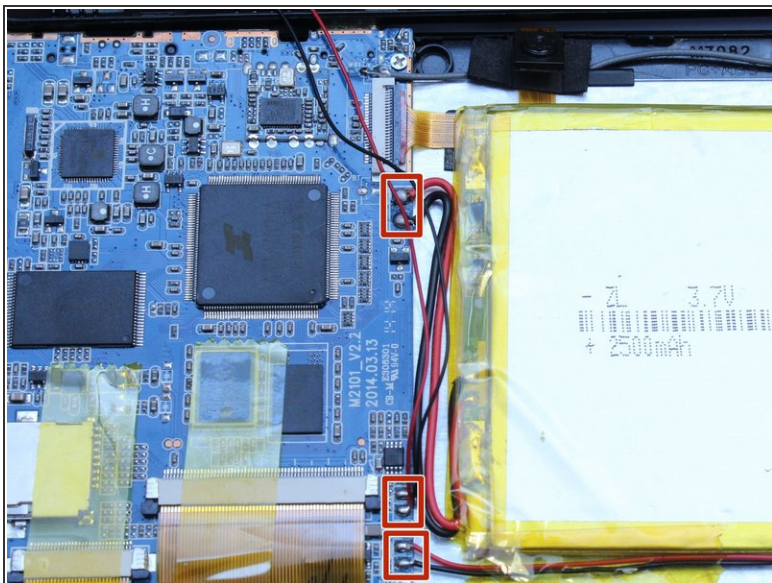
Step 5



- Use a Phillips screwdriver (PH00) to unscrew the two screws that connects the motherboard to the device

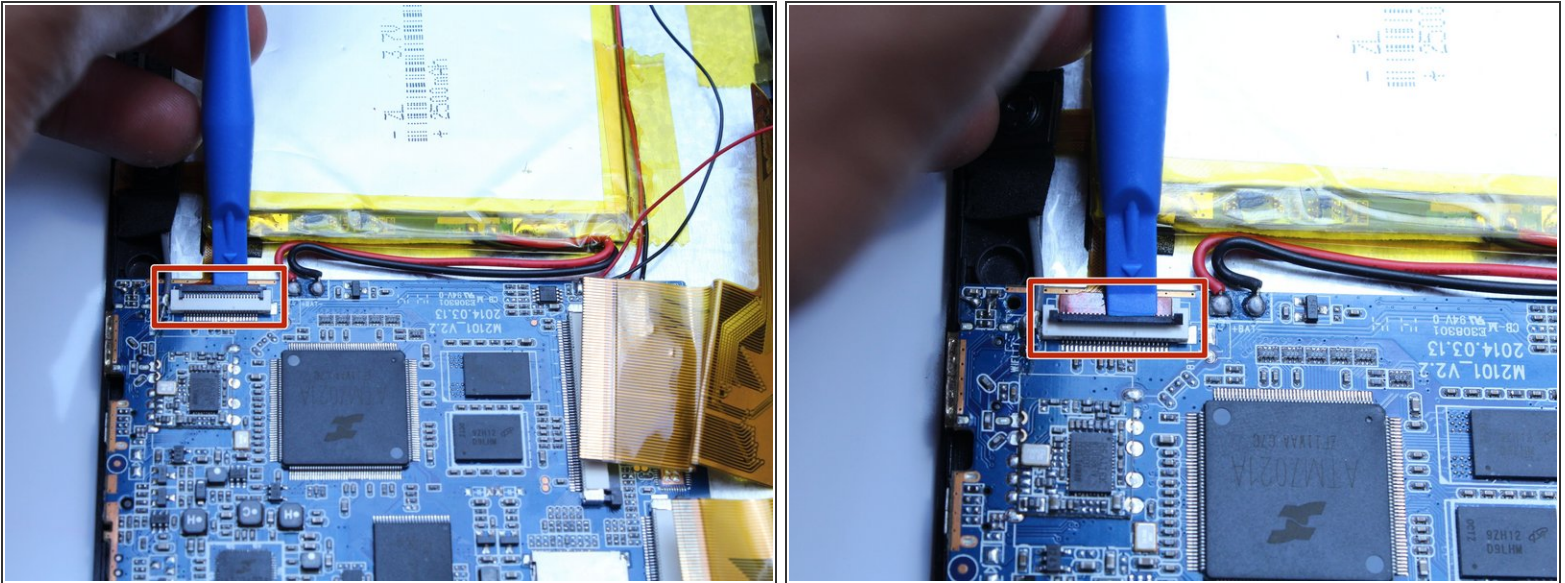
⚠ Be careful not to cut or damage the wires (red and black) that connect the motherboard to the battery.

Step 6



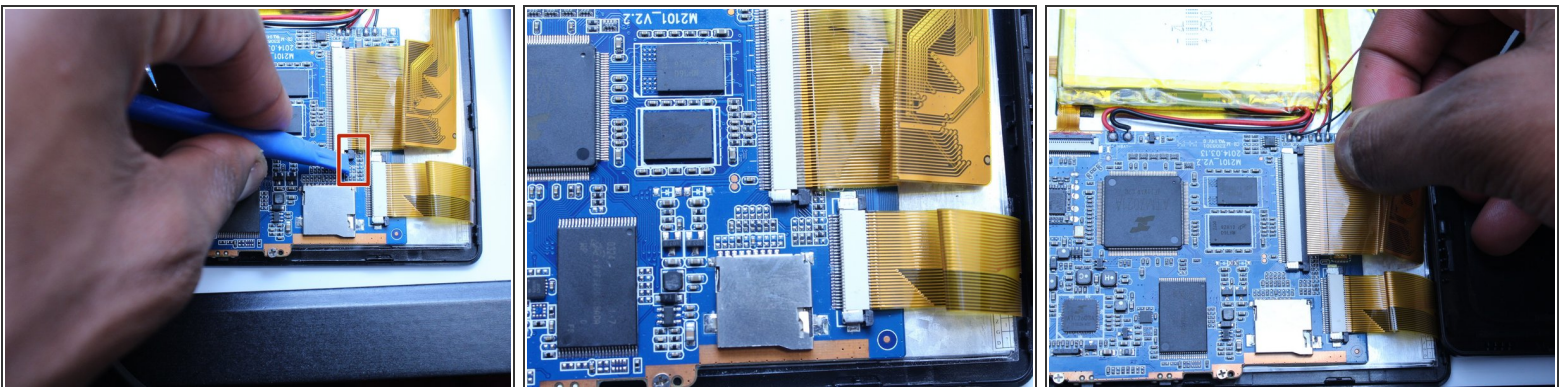
- Using a soldering iron, desolder the contact points of the speaker, battery and screen on the motherboard
- ⓘ If soldering is new to you, check out [this helpful guide](#) on soldering and desoldering connections.
- Use pliers to pull the wire from the board

Step 7



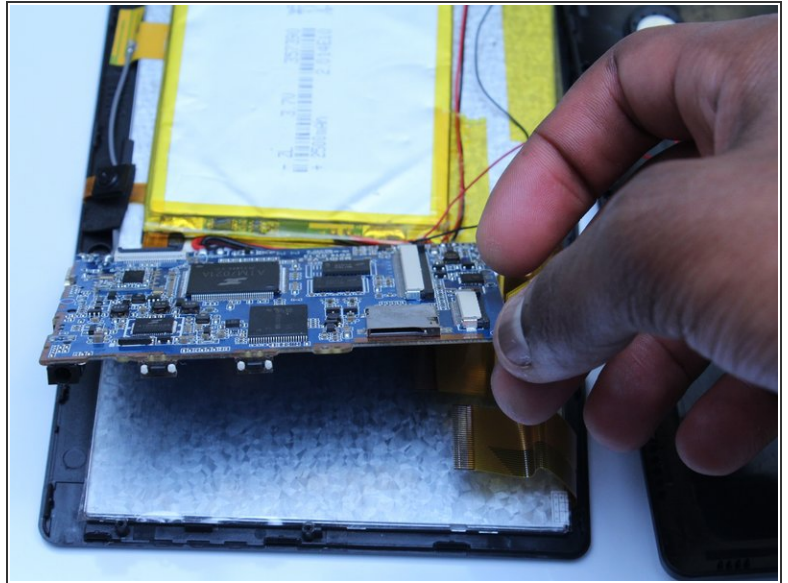
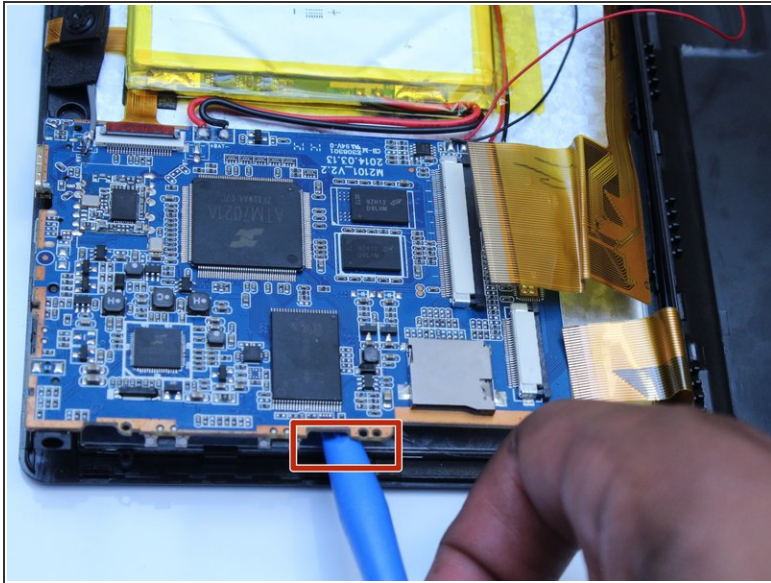
- Using the spudger, disconnect the ribbon cable connecting the camera to the motherboard

Step 8



- Using the spudger, push the black tabs towards the ribbon cable to unlock the ribbon cables that connect the screen to the motherboard.
- Gently pull and remove the ribbon cables from the motherboard

Step 9



- Using the flat side of the spudger, lift up the mother board to disconnect from the screen.

To reassemble your device, follow these instructions in reverse order.