



# ProntoTec Axius Speaker Replacement

This guide will demonstrate how to replace the speaker on a ProntoTec Axius tablet

Written By: Antonio Irons



## INTRODUCTION

Extended use of the device speakers at high volumes can result in them becoming damaged or non-functioning. This guide outlines how to access and replace the device speakers if they become malfunctioned.



### TOOLS:

- [iFixit Opening Tools](#) (1)
  - [Solder](#) (1)
  - [Soldering Iron](#) (1)
  - [Spudger](#) (1)
-

## Step 1 — Speaker



- ⚠ Make sure the device is completely turned off before you begin taking it apart to avoid electrocution risks.
- Place tablet face-up on a flat table.

## Step 2



- Starting near the headphone port, fit the flat end of the spudger in between the screen and back case.
- Pry the back case from the screen around each point on the device to release the clips securing the case halves to each other.



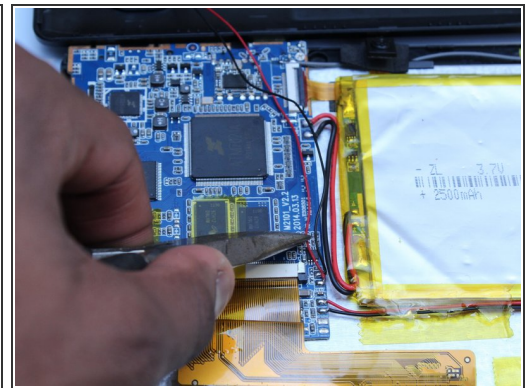
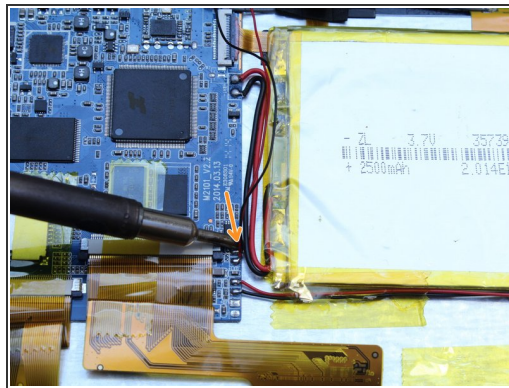
## Step 3



- Gently remove the back case of the device and lay it in a flat surface as shown in the photo.

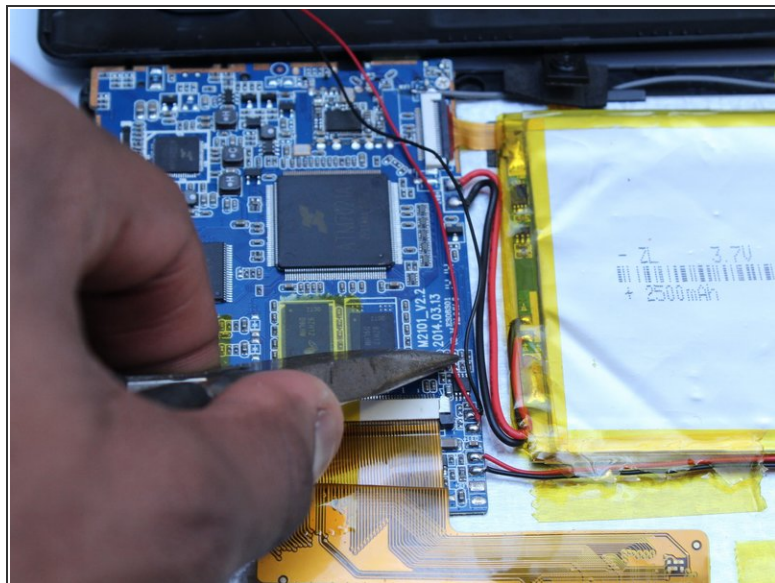
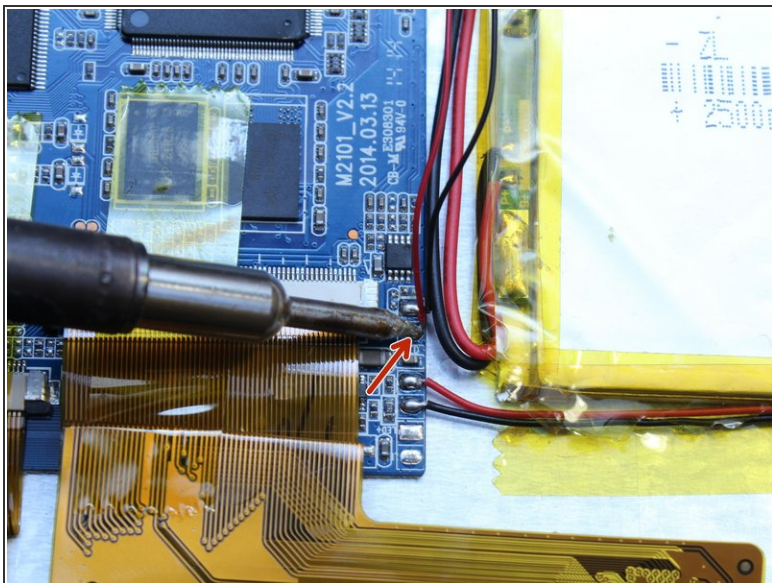
⚠ Don't pull the back of the device too far apart so it doesn't damage the wires that are connected to the speaker in the back of the device

## Step 4



- Disconnect the red wire connecting the speaker to the motherboard by using a soldering iron to melt the contact point.
- Once the solder is melted, use pliers to pull the wire away from the motherboard

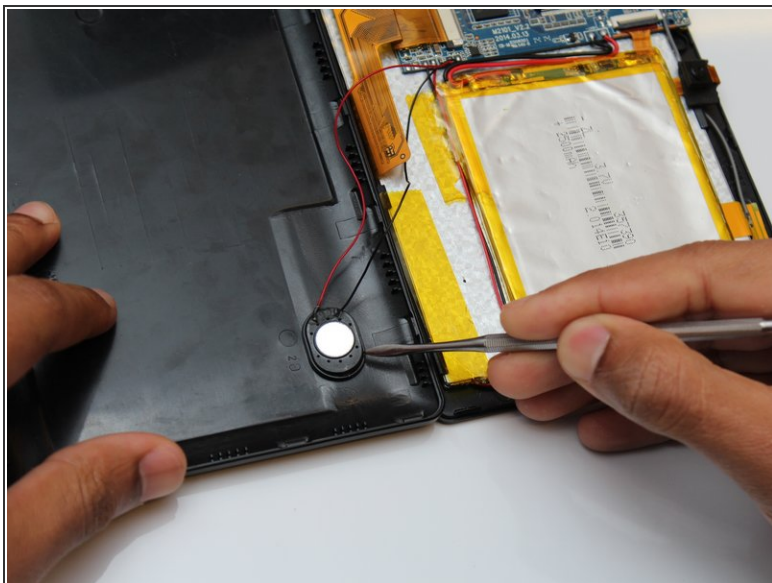
## Step 5




- Repeat Step 4 with the black wire connecting the speaker to the motherboard.
- ⚠ Don't leave the soldering iron too long on top of the wire so it doesn't melt any other component in the motherboard or surrounding the area.
- If soldering is new to you, check out [this helpful guide](#) on soldering and desoldering connections.



## Step 6



- Using a spudger gently remove the speaker from the back of the device.

 When working with electronics, it's important to choose a tool that's ESD-safe to avoid accidental damage to the device. The metal spudger is great when you need serious prying power, but the regular black nylon spudger should be used whenever possible.

To reassemble your device, follow these instructions in reverse order.