



Protocol Dronium III AP Trim Rocker Switch Replacement

How to open the remote control for the purpose of replacing components, specifically the Trim Rocker Switch.

Written By: Steven Mooers



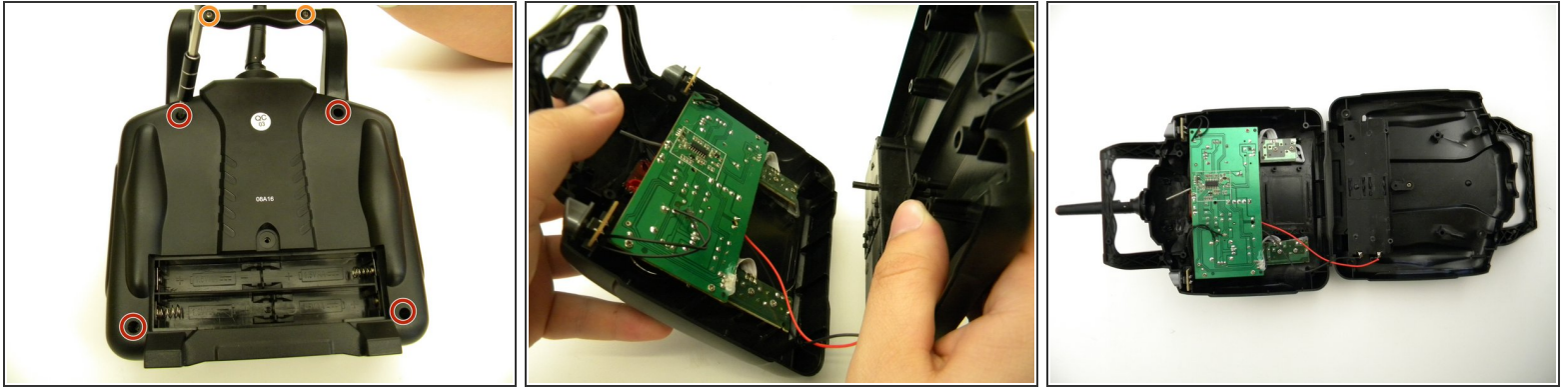
INTRODUCTION

This guide provides the steps needed to open and access the components within the remote control, specifically the Trim Rocker Switch.

TOOLS:

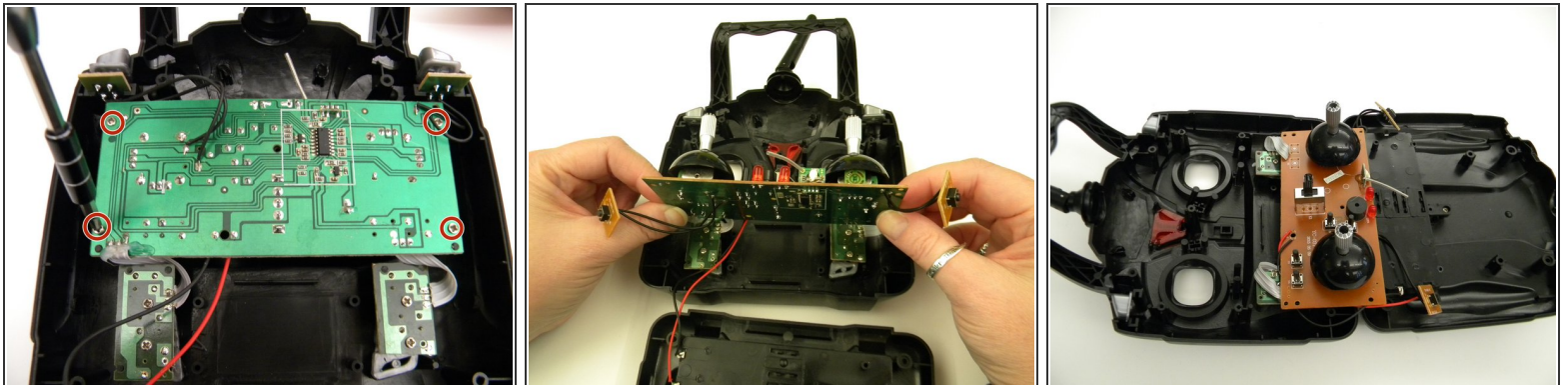
- [JIS #1](#) (1)
-

Step 1 — Trim Rocker Switch



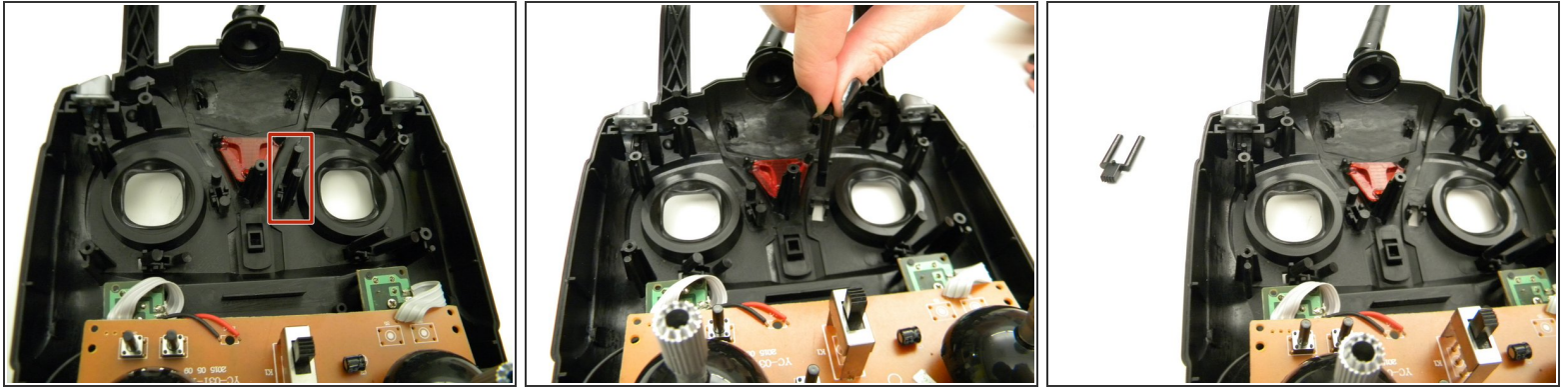
- Remove the four (4) 8.5mm screws from the body of the remote using a JIS #1 screwdriver.
- Remove the two (2) 4mm screws from the handle using a JIS #1 screwdriver.
- Open remote body lifting back a full 180 degrees from face.

Step 2



- Remove the four (4) 6mm screws attaching the motherboard to body of the controller using a JIS #1 screwdriver
- Gently lift the motherboard backwards.

Step 3



- Remove the trim rocker switch from the controller.

To reassemble your device, follow these instructions in reverse order.