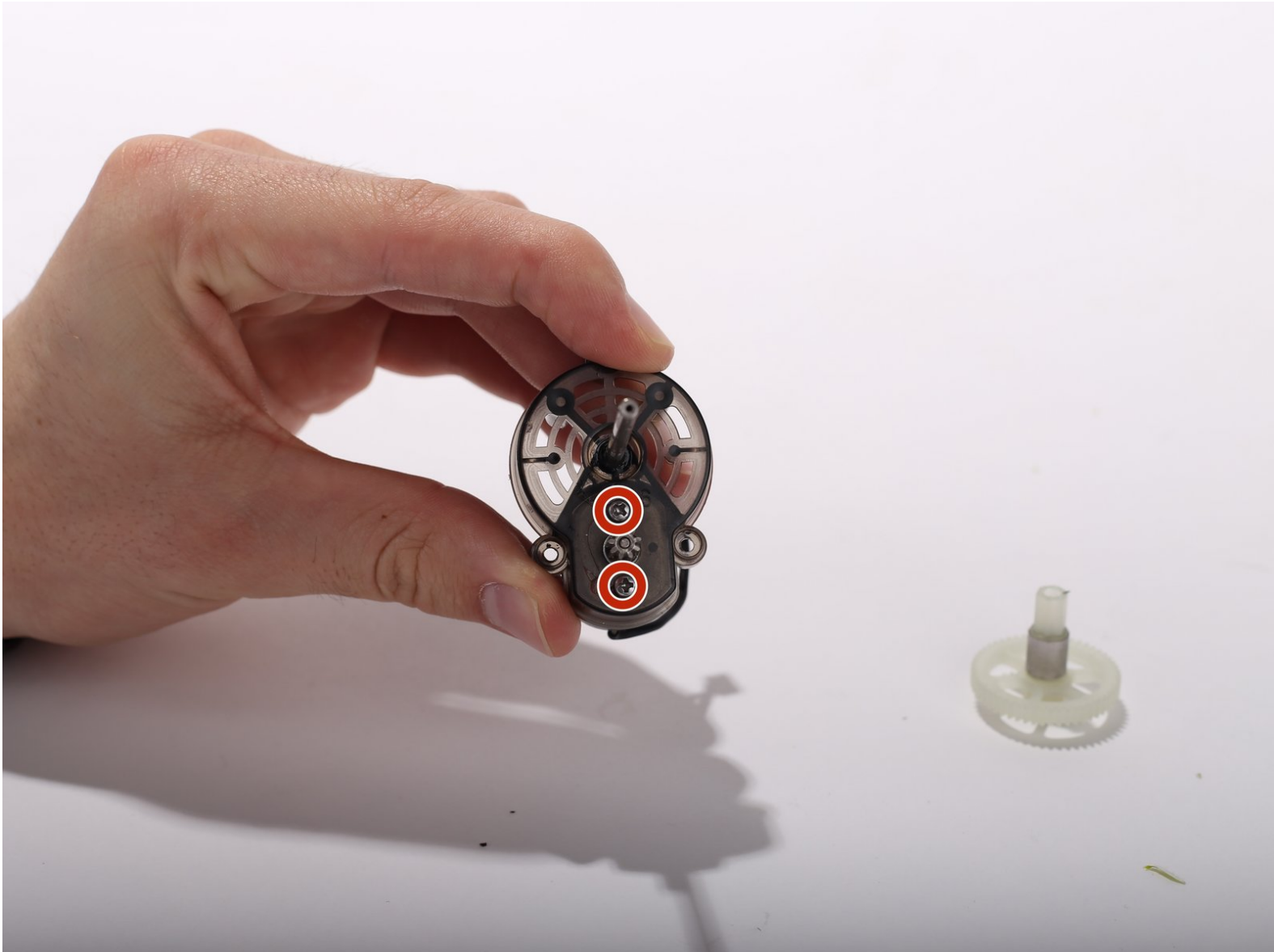




Protocol Galileo Motor Replacement

This guide will walk you through replacing your drone's motor.

Written By: Thomas Ramey



INTRODUCTION

If one or more motors on your drone are not responding, this guide will show you how to replace them.



TOOLS:

- [Heavy-Duty Spudger](#) (1)
 - [Tweezers](#) (1)
 - [Metal Spudger](#) (1)
 - [Phillips #0 Screwdriver](#) (1)
 - [iFixit Opening Tools](#) (1)
-

Step 1 — Battery



- Find door on the underside of drone. Open the door.

Step 2



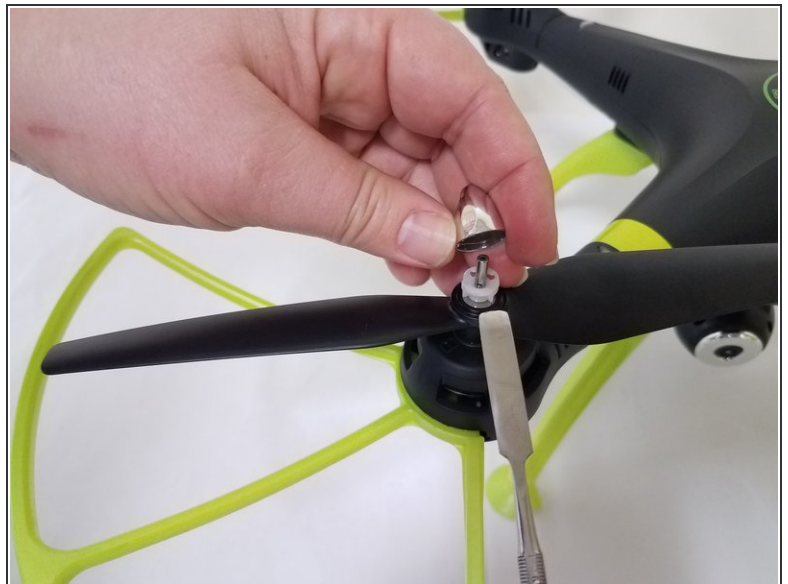
- Carefully pull out battery, pulling out wires first.

Step 3



- Disconnect the connector.
- ★ When reconnecting, remember to match up the black wire with the black wire and the red with red.

Step 4 — Propeller



- Use the heavy duty spudger tool to pry off metal caps by pushing the spudger up into the cap.

Step 5



- Twist the white spindle sleeve counter clockwise to align locking pin inside with the opening.

Step 6



- Use tweezers to remove locking pin.

Step 7



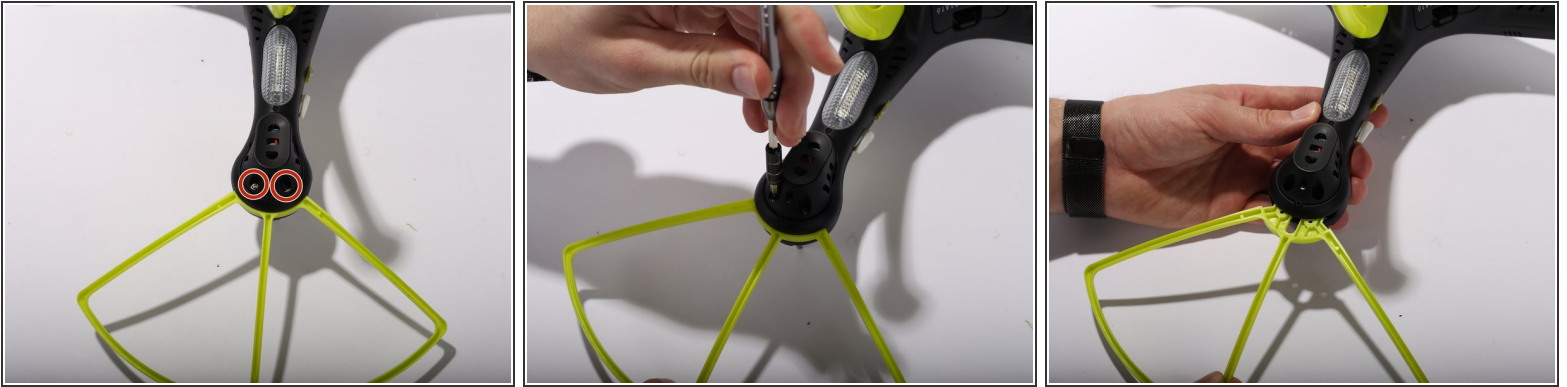
- Pull off white spindle sleeve.
- ☑ Take note of which side of the spindle sleeve is the top.

Step 8



- Pull off propeller.

Step 9 — Top Shell



- Remove Blade Guards by unscrewing two 13 millimeter screws using Philips #0. Pull out the guards. Repeat the steps for the other three corners.

Step 10



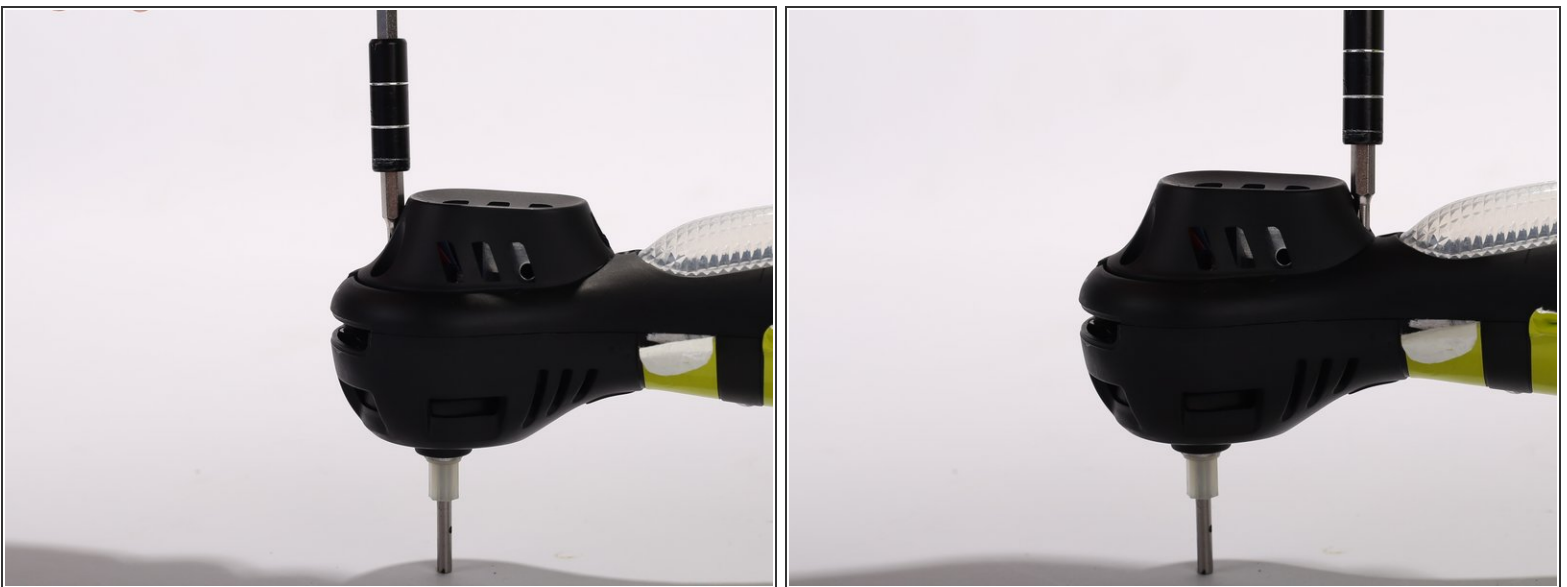
- Unscrew two 9 mm screws located inside the legs. Repeat the same procedure for the other three legs

Step 11



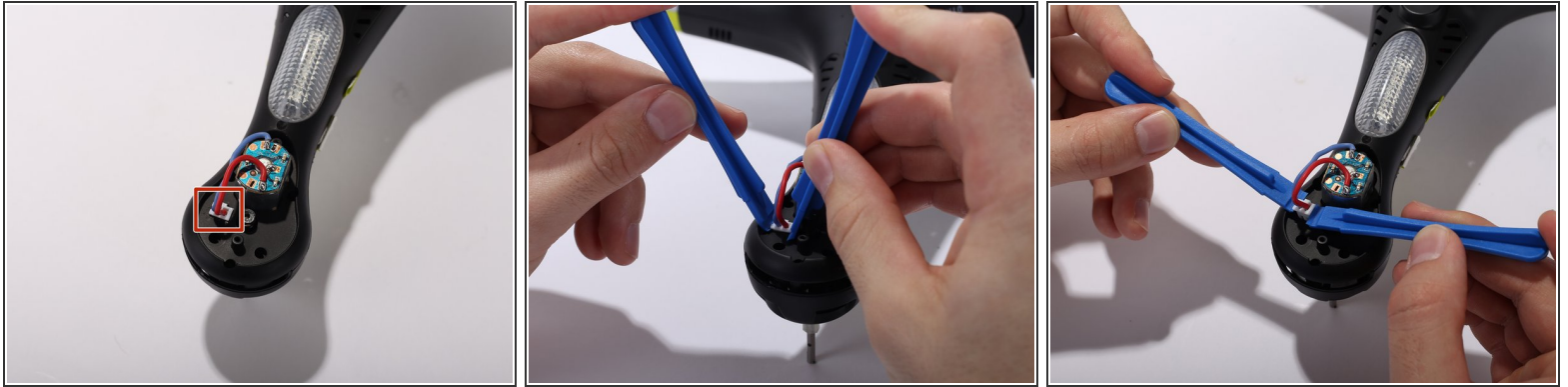
- Unplug the camera wire.
- Press the hold release button and slide out the camera module away from the button.

Step 12



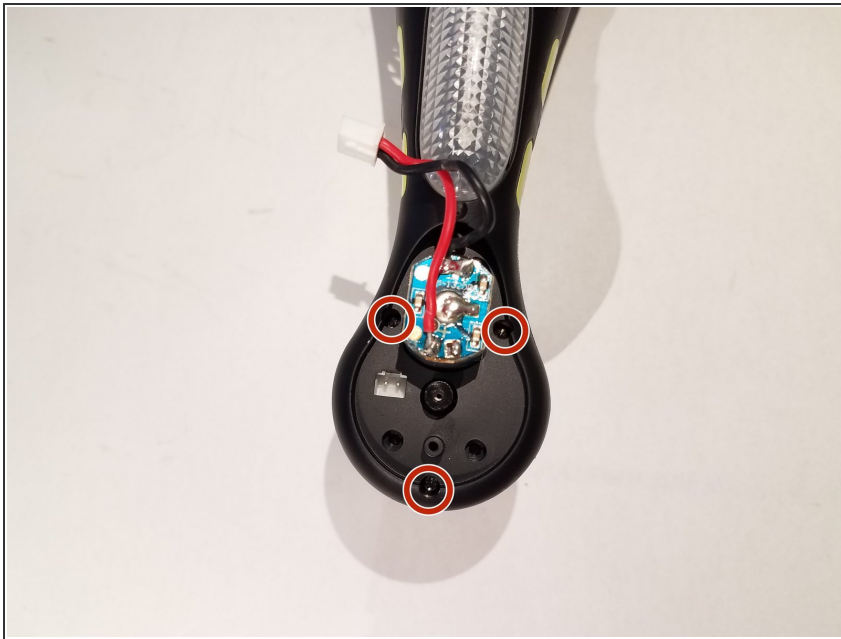
- Remove the motor protection cover by unscrewing two 9 mm screws using Philips #0. When the screws are off, use your fingers to pull the motor protection cover off. Repeat the procedure for the other three arms.

Step 13



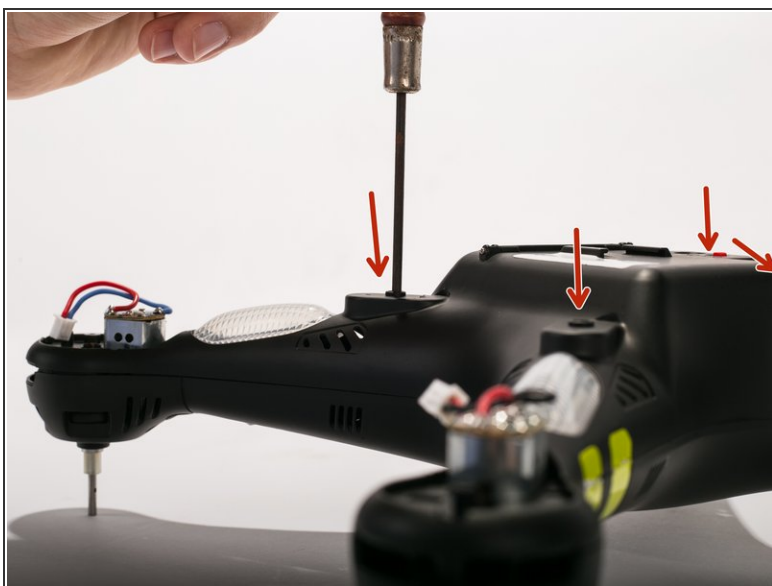
- Unclip the motor cable from the shells housing using two pry tools. Repeat the same procedure for the other three arms.

Step 14



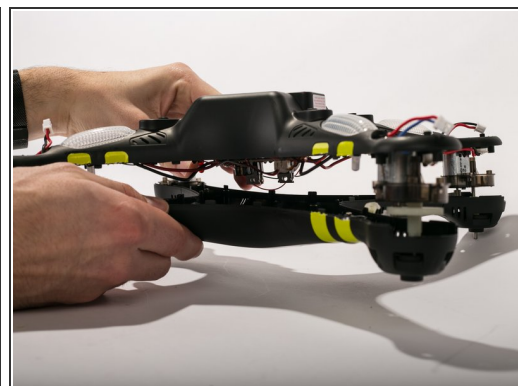
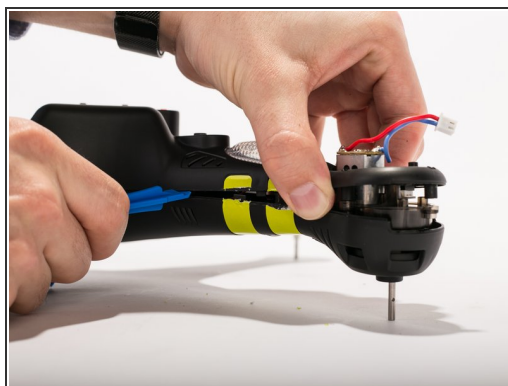
- Remove 3 9mm screws around the motor housing. Repeat the steps for the three other arms.

Step 15



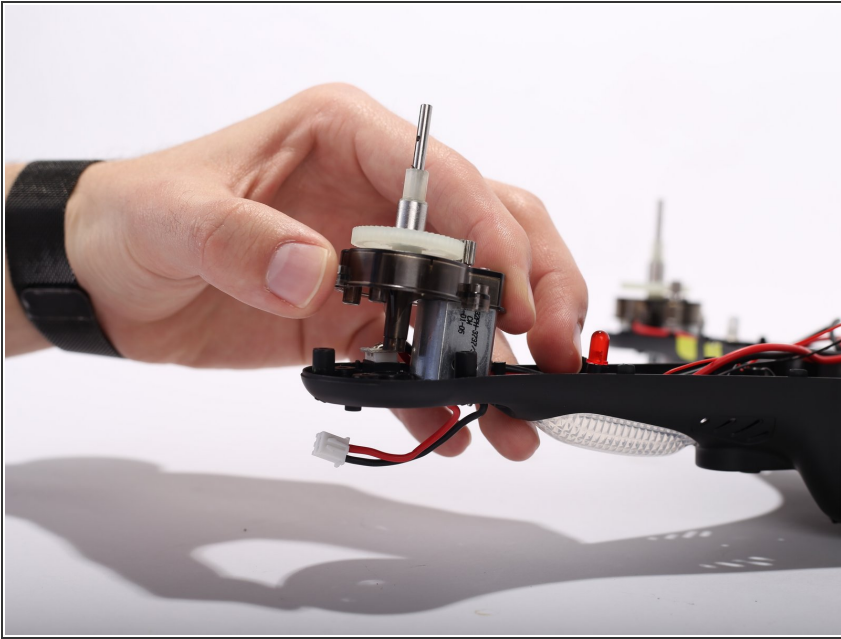
- Remove four 9 mm screws located where the legs originally are placed. (Use a thin head screwdriver)

Step 16



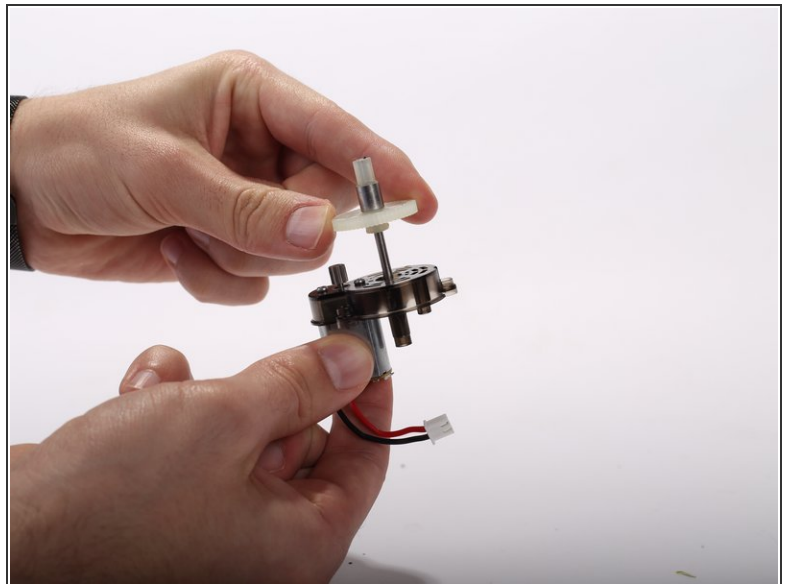
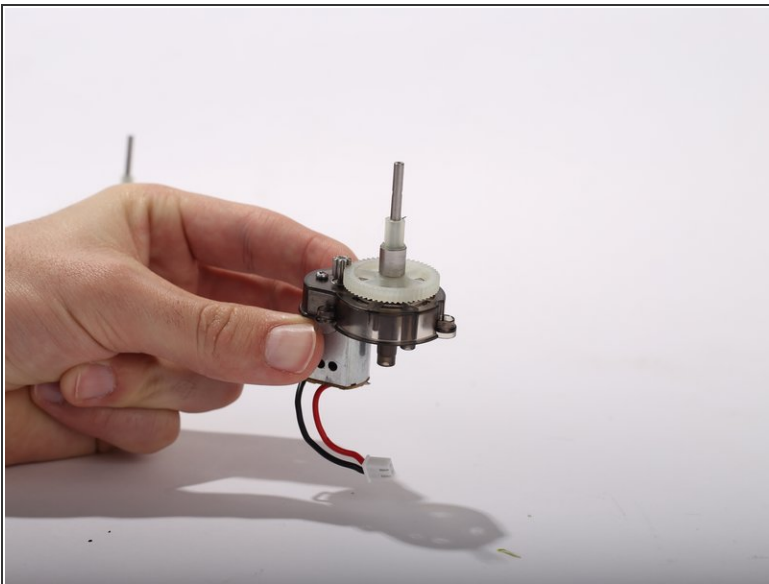
- Cut the yellow strips using a scalpel. Pry open the casing using pry tools working gently around the corners.

Step 17 — Pinion Gear



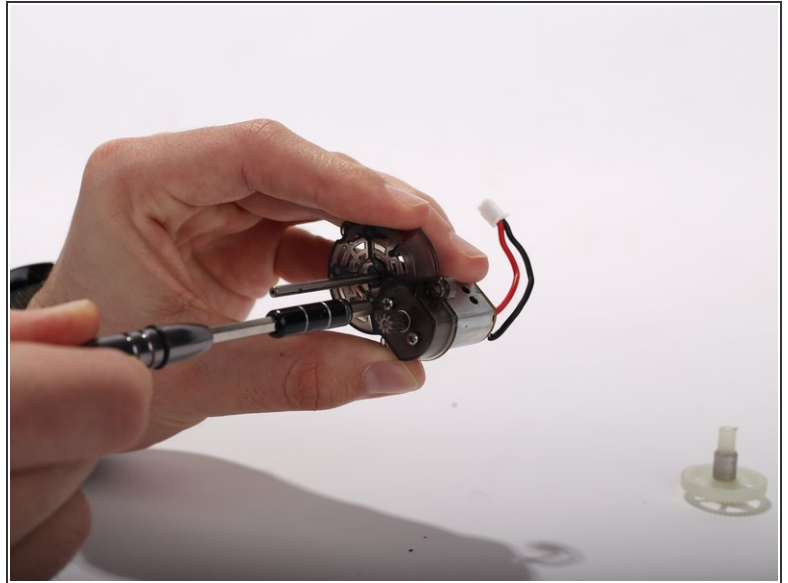
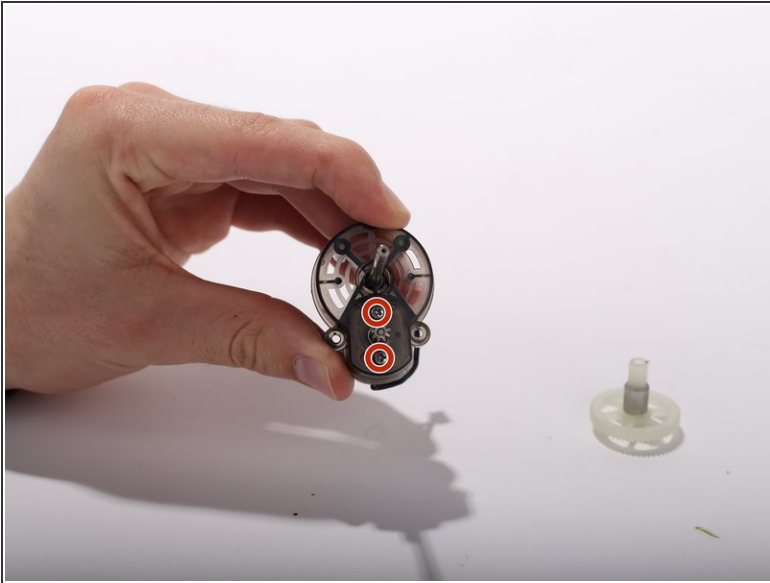
- Remove the motor assembly from the bottom shell.

Step 18



- Slide the pinion gear off of the motor assembly.

Step 19 — Motor



- Remove the two 4mm Philips screws from the motor.
- Separate the motor from the plastic motor holder.

To reassemble your device, follow these instructions in reverse order.