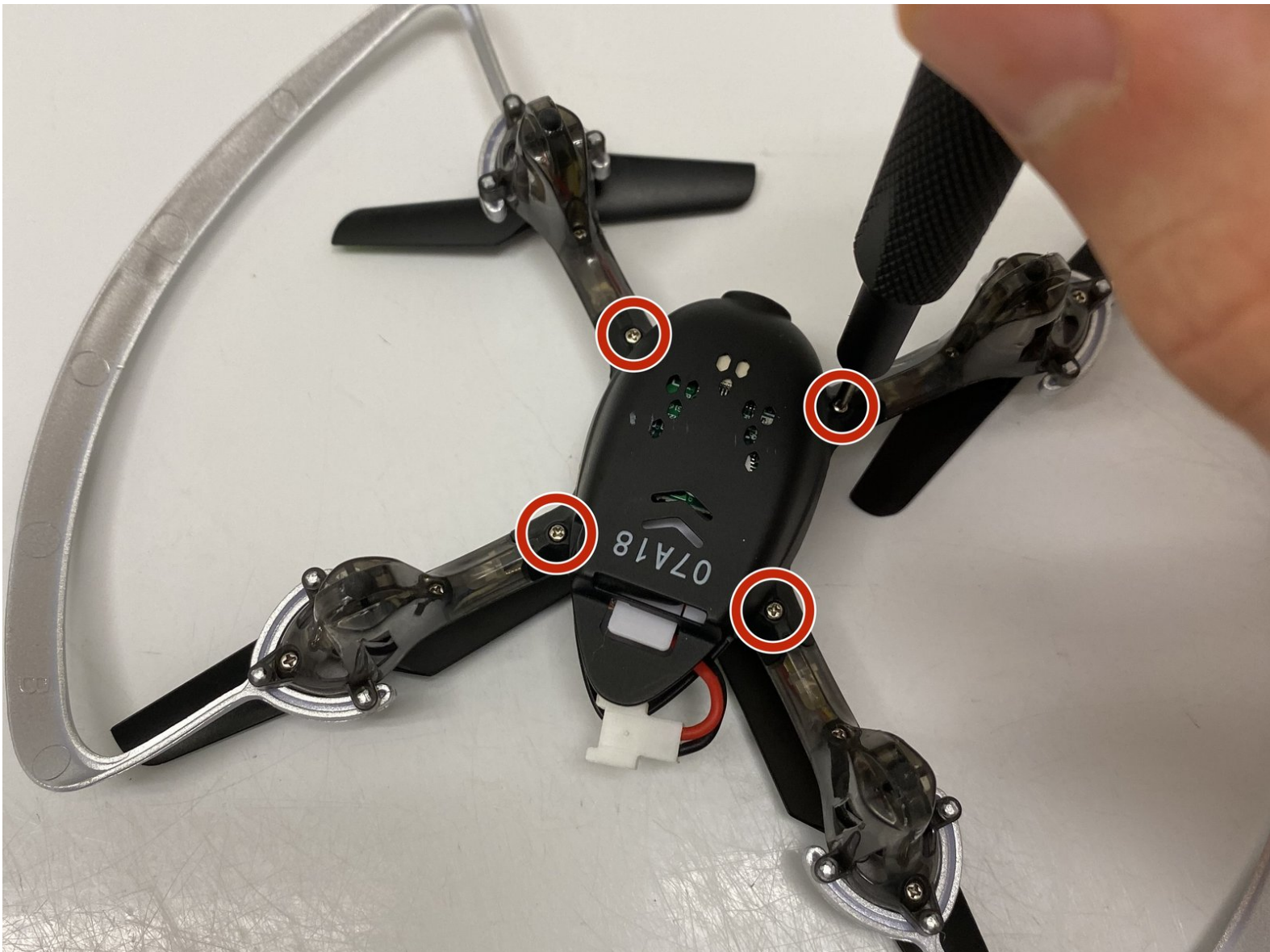




# Protocol Slipstream WiFi Camera Replacement

How to replace the camera in a Protocol Slipstream WiFi. Model Number 6182-3MXB.

Written By: John Burkee



## INTRODUCTION

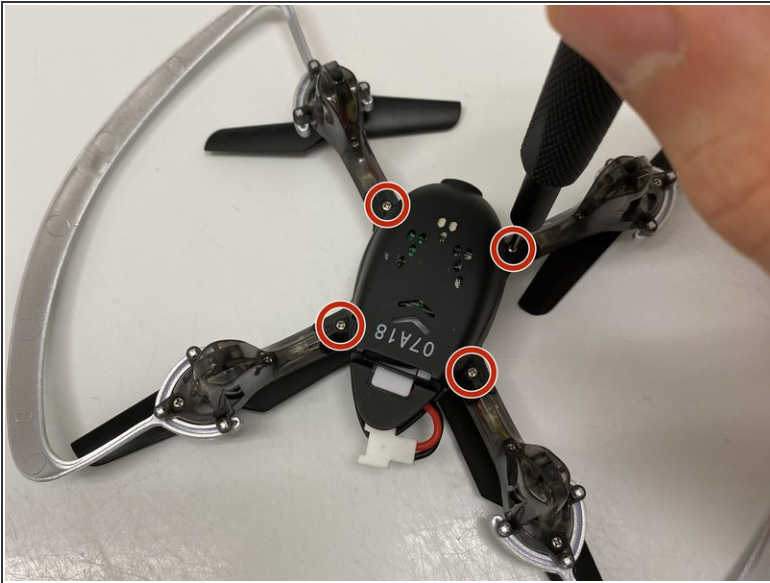
If your Protocol Slipstream WiFi (model number 6182-3MXB) has a broken camera on it, use this guide to replace the camera. The camera is what allows the user to take photo and videos from the device. If the camera is broken you will not be able to take photos and videos from the device. Be careful not to replace the camera with the device turned on. The propeller spins very fast and can be potentially harmful. When removing the camera be careful with the ribbon wire. Ribbon wire is very fragile and very easy to break. Before trying to remove the camera's ribbon wire from the connection point, make sure that the two tabs that hold the ribbon wire are fully pushed out.



### TOOLS:

- [Phillips #00 Screwdriver](#) (1)
  - [Spudger](#) (1)
-

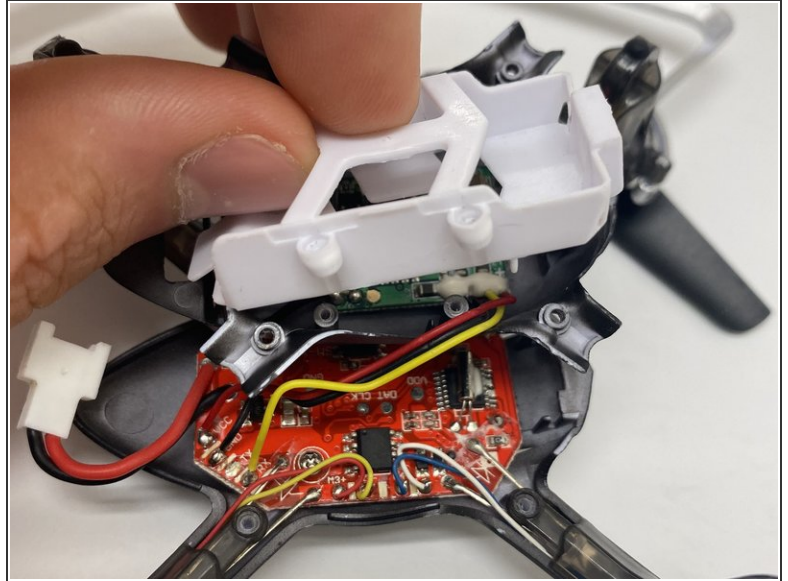
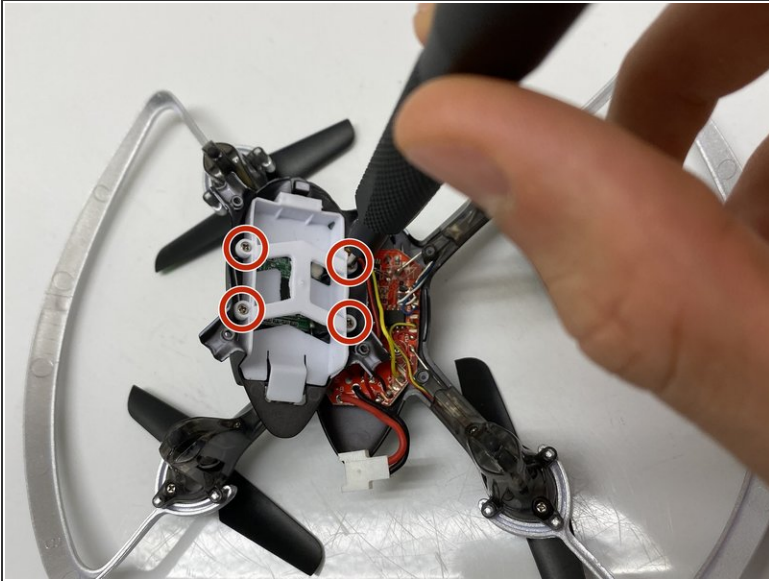
## Step 1 — Camera



- Remove the four 5.5 mm Phillips #00 screws that hold the lower canopy to the upper canopy.
  - Gently pull the lower canopy up and towards the back of the drone. The lower canopy will still be attached to the upper canopy by 3 wires. Just set the lower canopy aside and continue with the repair.
- i* Be very careful when pulling the lower canopy apart from the upper canopy. There are 3 wires that will still be attached between the lower and upper canopies.**

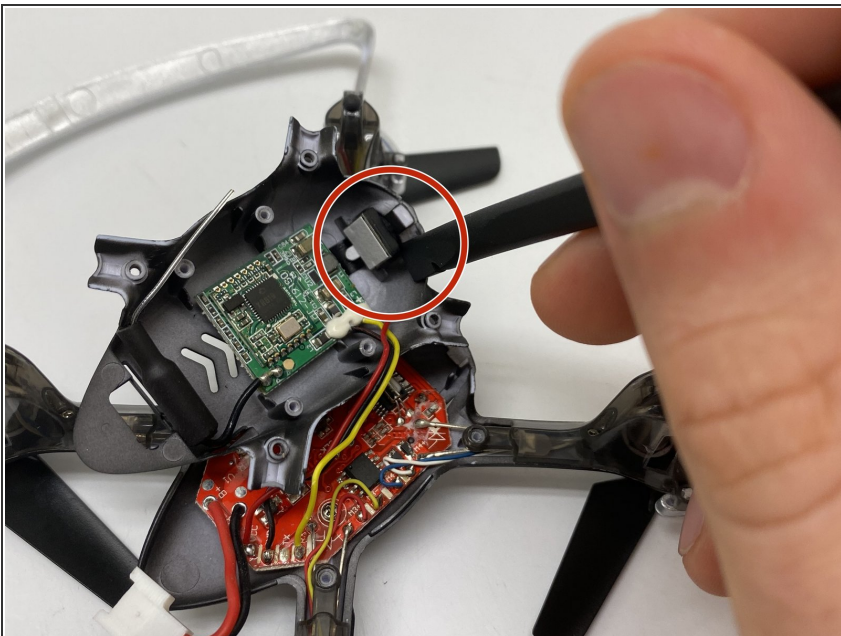


## Step 2



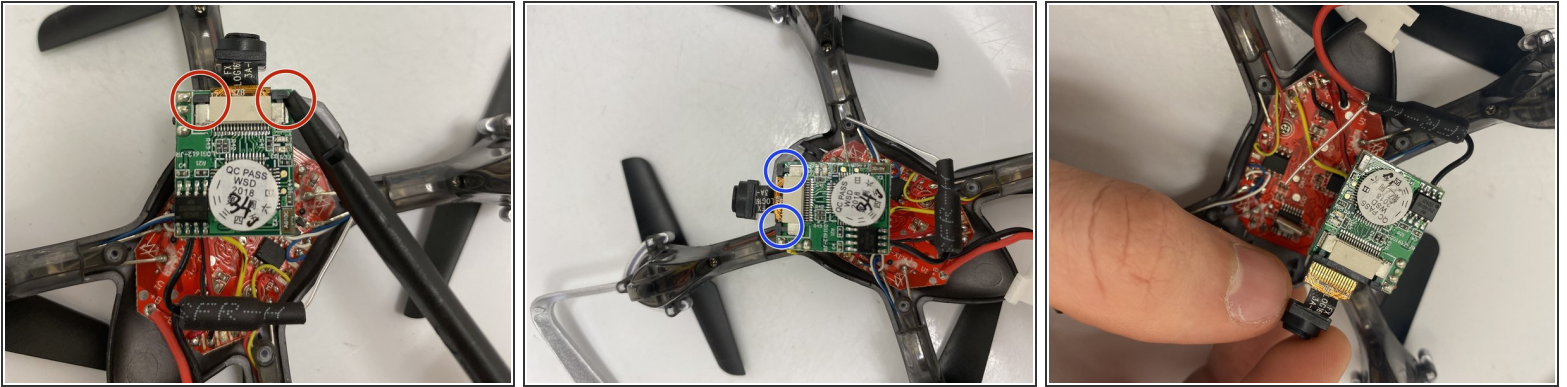
- Remove the four 5.5 mm Phillips #00 screws that holds the battery tray to the lower canopy.
- Once the four 5.5 mm Philips #00 screws are removed gently pull on the battery tray to separate it from the lower canopy.

## Step 3



- Use a spudger to gently pry around the outside edge of the camera to remove the camera from its mounting hole.
- ⓘ **Be careful when removing the camera from its mounting hole as there is a small ribbon wire that connects it to the computer.**
- The camera and computer assembly will now be free to move. Move the lower canopy out of the way for now.

## Step 4



- Use the flat side of the spudger and push the 2 tabs on either side of the camera connection on the computer and push the tabs towards the front of the drone (away from the computer).
- ❗ **Make sure both tabs are all the way out otherwise the ribbon wire for the camera will not be free and you can damage the wire by pulling on it.**
- Now remove the camera ribbon wire from the camera connection on the computer.

To reassemble your device, follow these instructions in reverse order.