



Protocol Slipstream WiFi Propeller Guards Replacement

How to replace the propeller guards in a Protocol Slipstream WiFi. Model Number 6182-3MXB.

Written By: John Burkee



INTRODUCTION

If your Protocol Slipstream WiFi (model number 6182-3MXB) has a broken propeller guard on it, use this guide to replace the propeller guard. The propeller guard is what protects the propellers from hitting any objects and breaking. If the propeller guard is broken then the propellers will no longer be protected and will break if you hit any objects. Be careful not to work on the device with the device turned on. The propellers spin very fast and can be potentially harmful. The Slipstream WiFi has 2 propeller guards on it. Each propeller guard protects 2 propellers. Each propeller guard also has two locations where you will remove the 3 tabs before you can replace the propeller guard.



TOOLS:

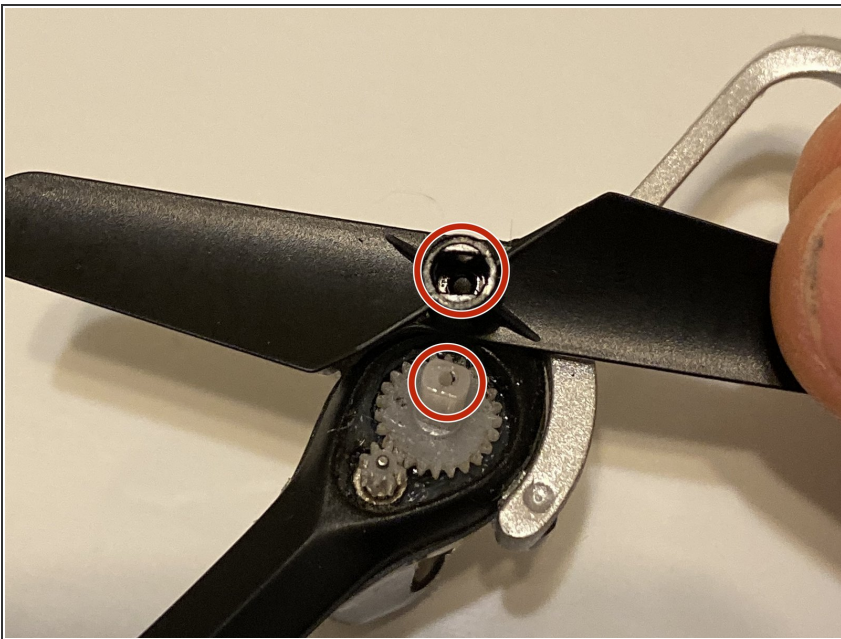
- [Phillips #00 Screwdriver](#) (1)
-

Step 1 — Propeller



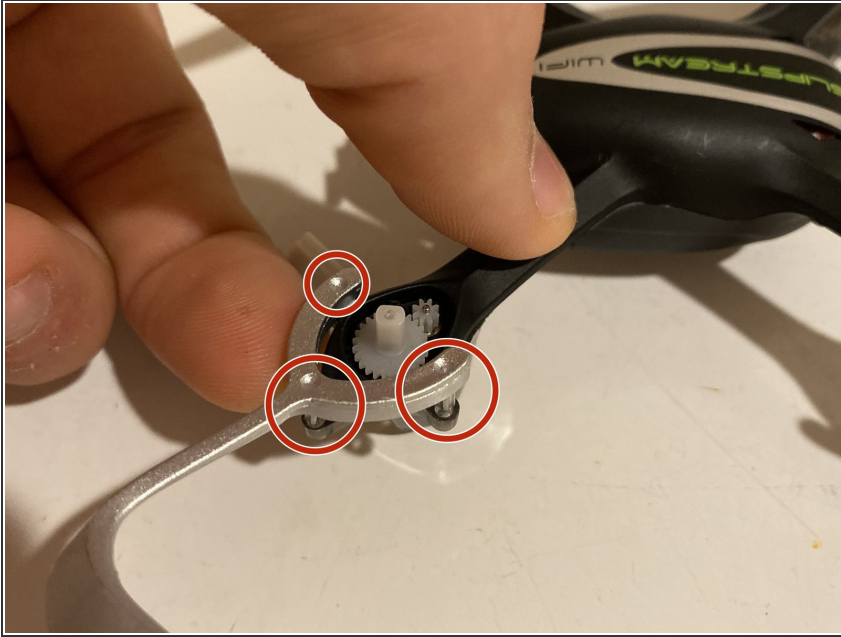
- Remove the 4.5 mm Philips #00 screw that holds the propeller in place.

Step 2



- Lift the propeller off the device
- **Note:** When sliding on the new propeller, make sure to align the groove on the propeller with the shaft of the gear. If aligned correctly the propeller should slide on smoothly.
- ⓘ There are two different propellers that go on the device. Each propeller has a 3 or 4 written on it. Be sure to replace the propeller with a new propeller with the matching number.

Step 3 — Propeller Guards



- There are 3 points where the propeller guard attaches to the device.
 - Place one finger on the body (black object) of the device and one finger under the propeller guard (silver object) and gently but firmly push the propeller guard up until it disconnects from the body at the 3 points circled in red.
- i** There are two propeller guards on the device. One for each set of propellers. Each propeller guard has two locations that you have these 3 tabs to remove until you can replace it.

To reassemble your device, follow these instructions in reverse order.