



Protocol Vento Wi-Fi Antenna Replacement

This guide will demonstrate how to remove and replace the Protocol Vento Wi-Fi antenna.

Written By: Maria Larcomb



INTRODUCTION

This guide will demonstrate how to remove and replace the Protocol Vento Wi-Fi antenna.



TOOLS:

- [iFixit Opening Tools](#) (1)
 - [Phillips #000 Screwdriver](#) (1)
-

Step 1 — Battery



- Grasp the tail end of the drone where the lip of the battery protrudes.

Step 2



- Pull away from the drone to remove the battery.
- ✦ Do not attempt any repairs or replacements before removing the battery from the drone.

Step 3 — Transmitter Board



- To get into the drone, twelve total screws need to be removed:
 - Ten 5.7mm Phillips #000 screws from the bottom of the drone body.
 - Two 4.5mm Phillips #000 screws at the front of the drone.
- ⓘ *It is not necessary to remove the four screws on the arms of the drone.*

Step 4



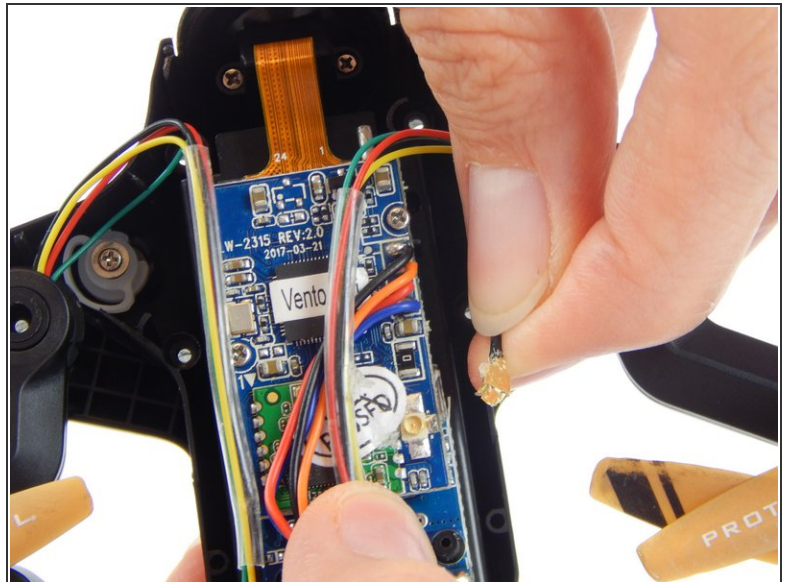
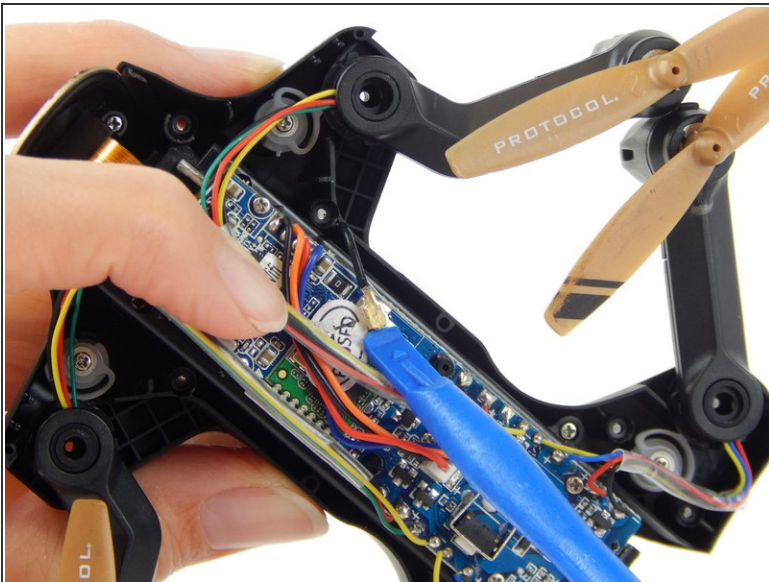
- Flip the drone over and lift off the top plastic shell of the drone.

Step 5




- Remove the foam adhesive pad located on the Wi-Fi transmitter board.

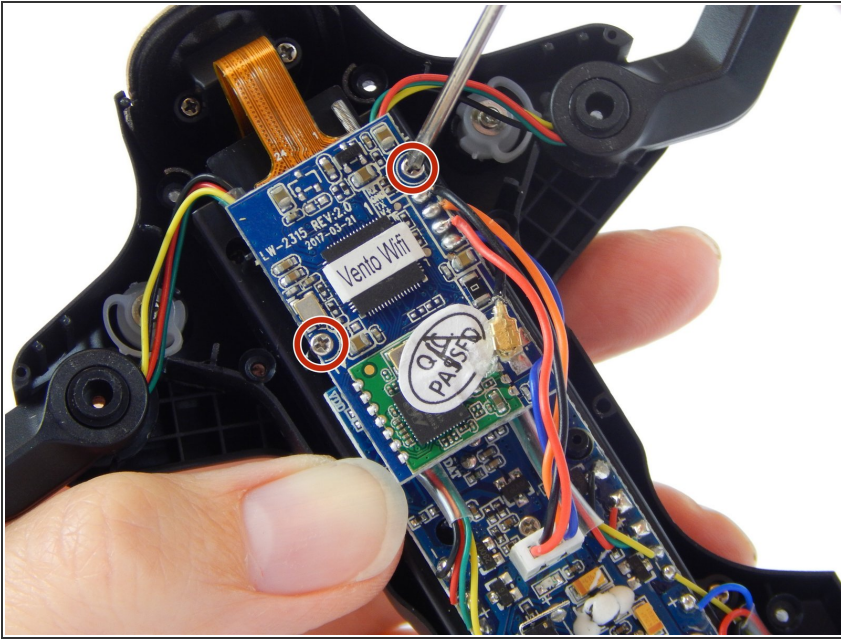
Step 6



- Pry the gold Wi-Fi antenna connector, located under the previously removed foam pad, away from the Wi-Fi transmitter board to disconnect it.

 *Be sure to only apply force to the gold connector and not the black wire attached to it, as the connection between the two is very fragile.*

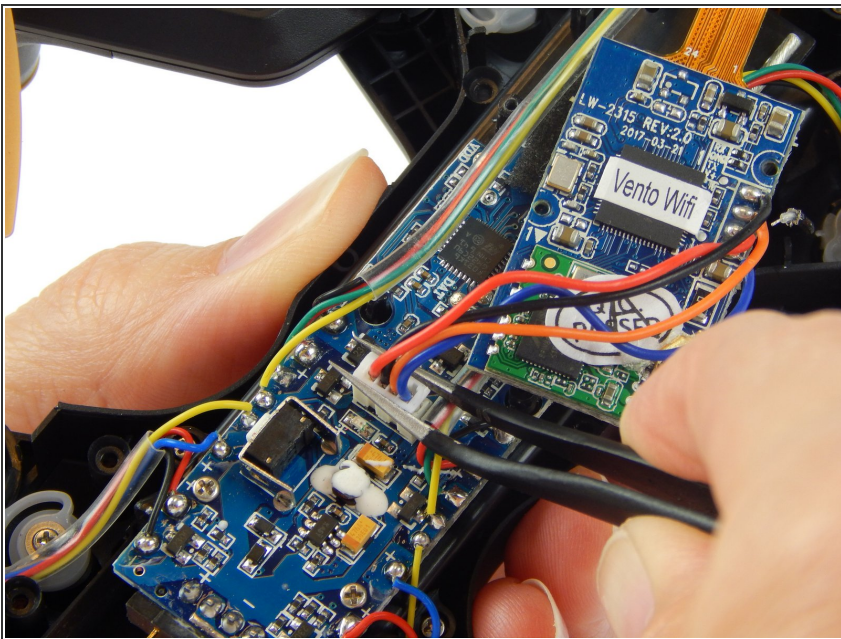
Step 7



- Remove the two 3.8mm Phillips #000 screws from the Wi-Fi transmitter board.

⚠ *Be careful with the delicate ribbon cable attached to the camera.*

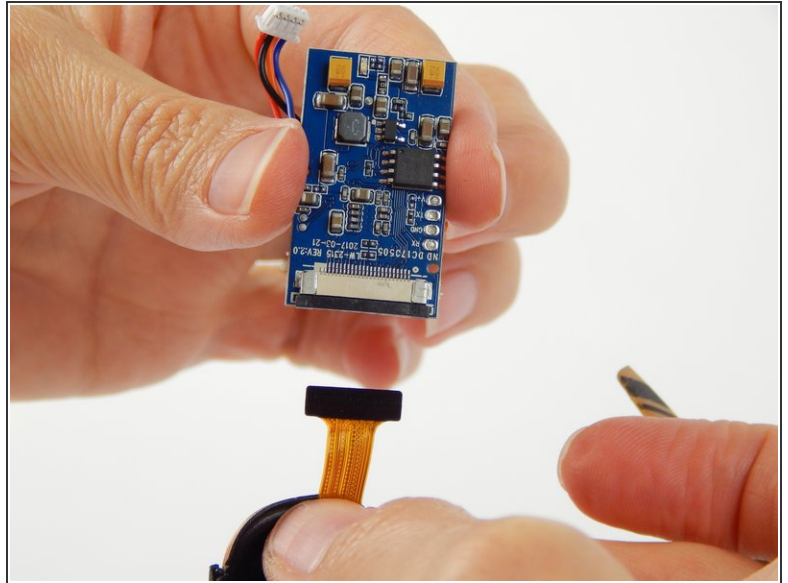
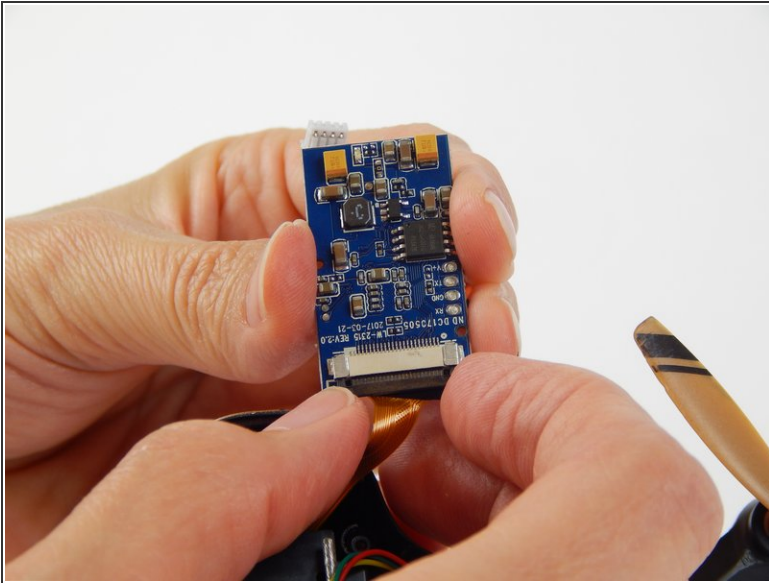
Step 8



- Disconnect the white clip that connects the four colored wires (black, orange, red, blue) to the motherboard.

⚠ *Be sure to pull only on the white clip, as to avoid damaging the wires.*

Step 9



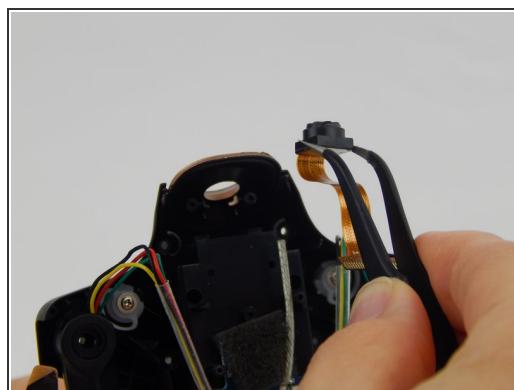
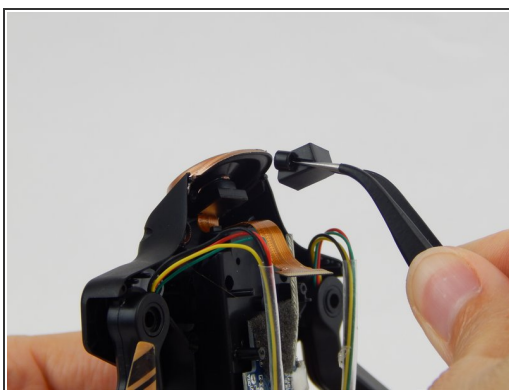
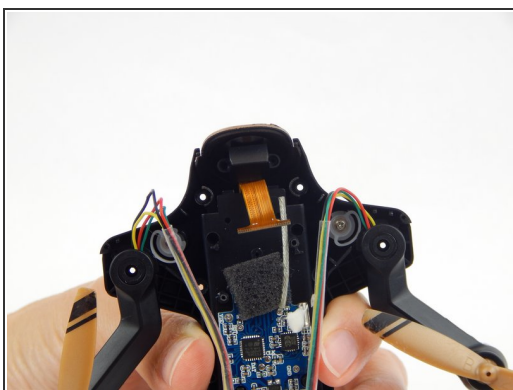
- Gently pull the black wedge away from the main board until it shifts to a stop. You will feel it slide out, then stop.
- ⓘ *The black insert acts as a wedge to keep the ribbon cable attached to the board. The wedge needs to be jostled loose before the cable can be removed.*
- Lightly pull the ribbon cable away from the connector.

Step 10 — Front Camera



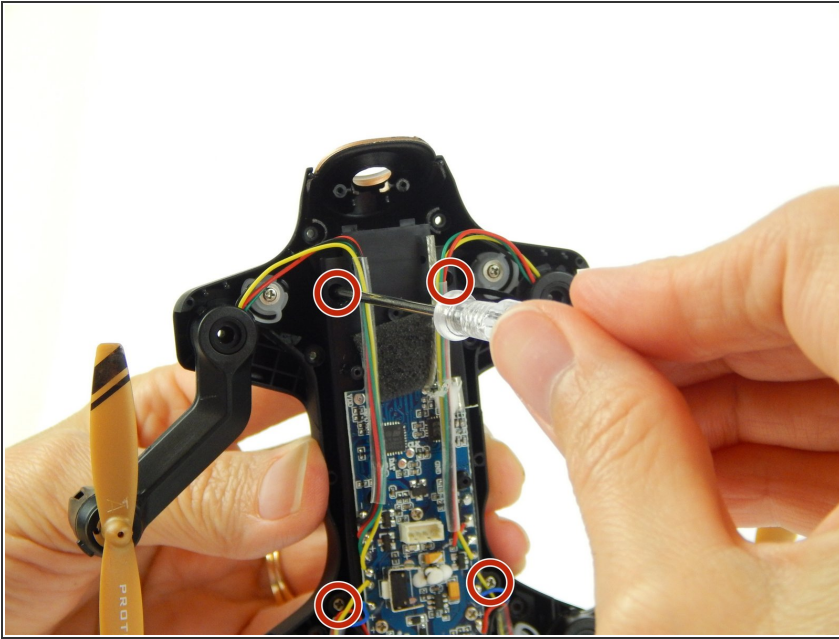
- Remove the two 4.9mm Phillips #000 screws securing the camera to the front of the drone body.

Step 11



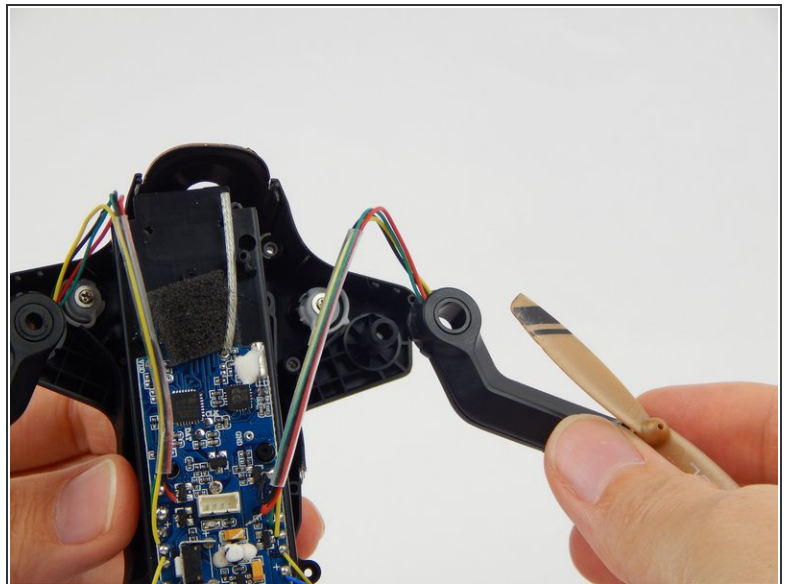
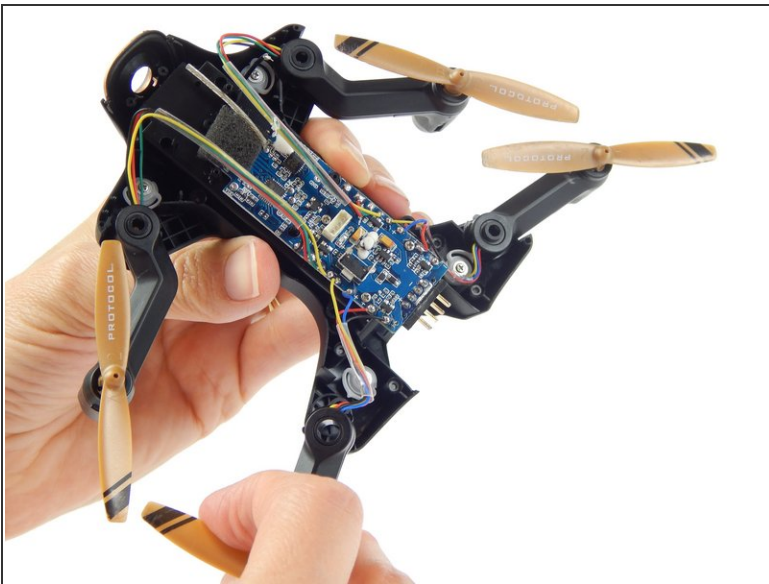
- Lift the camera holder and the camera up and away from the drone.

Step 12 — Wi-Fi Antenna



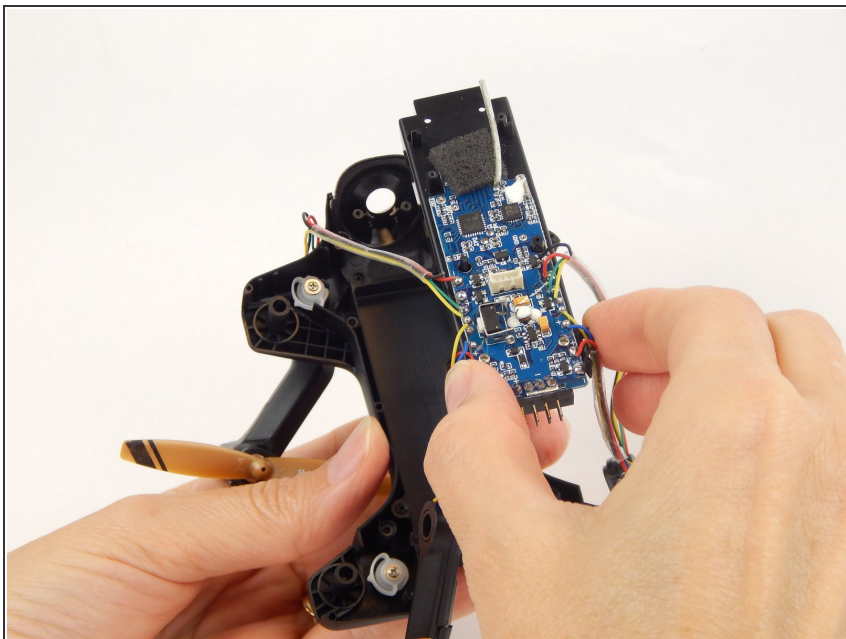
- Unscrew the four 4.9mm Phillips #000 corner screws that are securing the motherboard's black base to the drone.
- ⓘ It is not necessary to unscrew the motherboard from the black base.

Step 13



- Grasp and pull each of the four drone arms in the direction of their propellers, one at a time, to remove them from the drone.

Step 14



- Gently pull the motherboard out of the drone.
- ⓘ The four arms of the drone will dangle from the motherboard by their cords.

Step 15



- Pull the black, rectangular shell out of the drone.
- ⓘ It is not attached with screws.

Step 16



- Hold the drone's shell with both hands so that the inside of the shell is facing you.
- Gently flex the shell outward, so that the two latches (holding the antenna in place) move apart slightly.
- At the same time, push the antenna from the back of the drone towards you until it releases from the latches.

To reassemble your device, follow these instructions in reverse order.