



Protocol Videodrone AP Camera Replacement

This guide will show how to replace the camera in the Protocol Videodrone AP.

Written By: Karan Paranganat



INTRODUCTION

This guide shows how to replace the camera module for the Protocol Videodrone AP Drone. This is a slightly lengthy process as you will have to disassemble most of your drone. The camera module itself is both the sensor housing + the circuit board connected to it. You will only have to replace the circuit board, as the sensor housing is attached to it.

Remember to use the included #0 Phillips head screwdriver that came with your drone.

A soldering iron is required, so keep one ready.

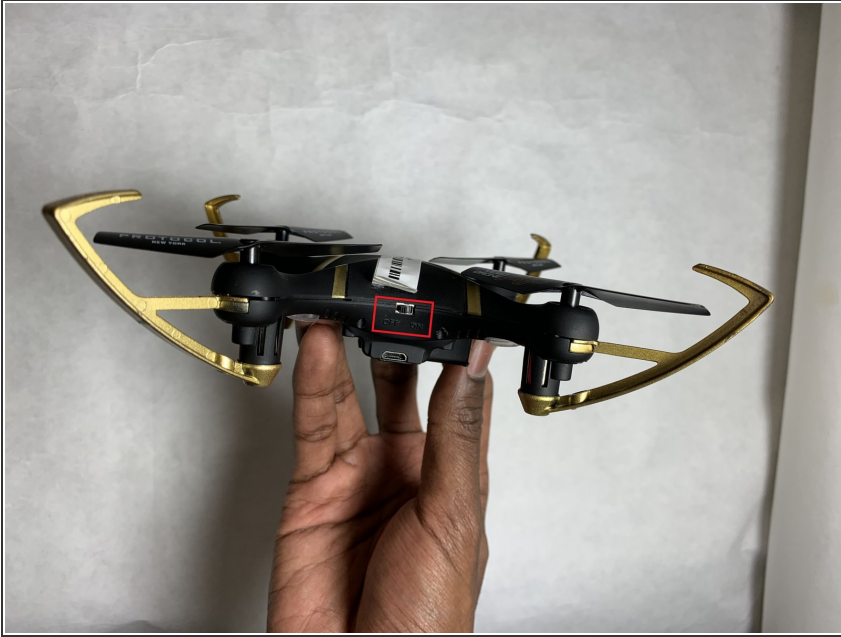
You will also need a replacement camera module.



TOOLS:

- [Phillips #0 Screwdriver](#) (1)
 - [Soldering Iron](#) (1)
-

Step 1 — Camera



- Power off the drone before proceeding with this repair.

Step 2



- Remove the propeller screws (1 per propeller).
- ⓘ You can use the Phillips #0 screwdriver if you don't own the one included with drone.

Step 3



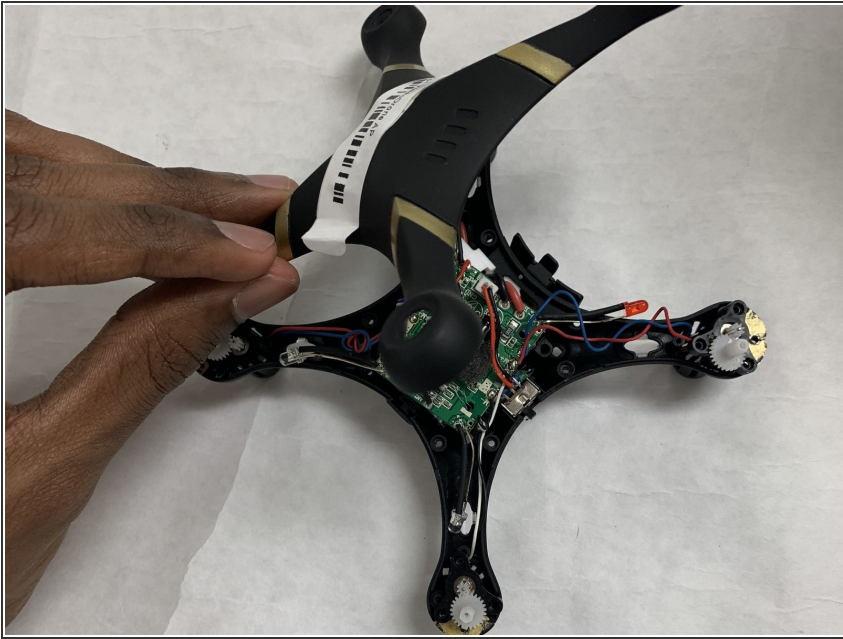
- Remove the screws holding on the propeller guards using the Phillips #0 screwdriver (2 per propeller guard).

Step 4



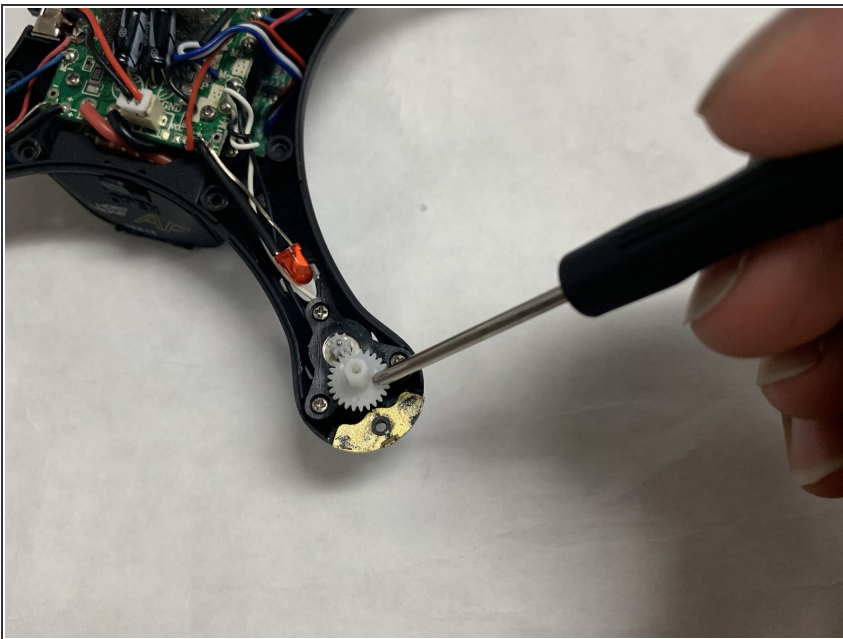
- Using the Phillips #0 screwdriver to remove the eight screws securing the body of the drone.

Step 5



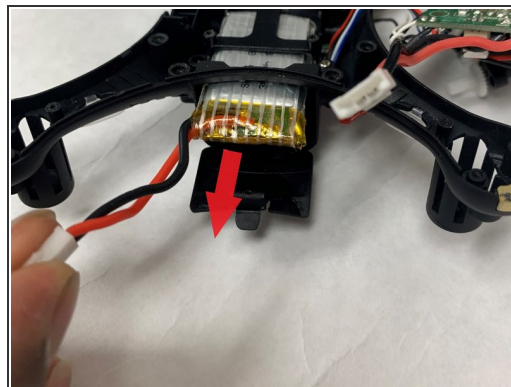
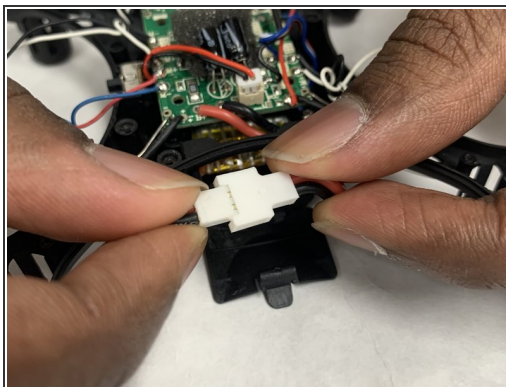
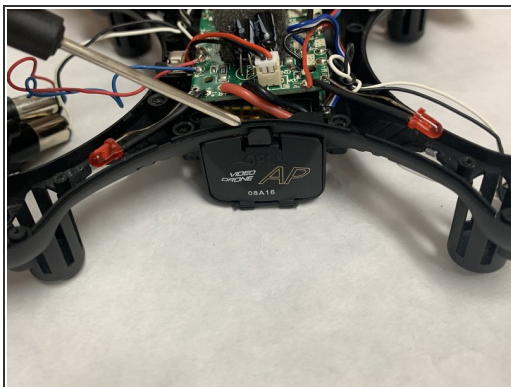
- Remove the case.

Step 6



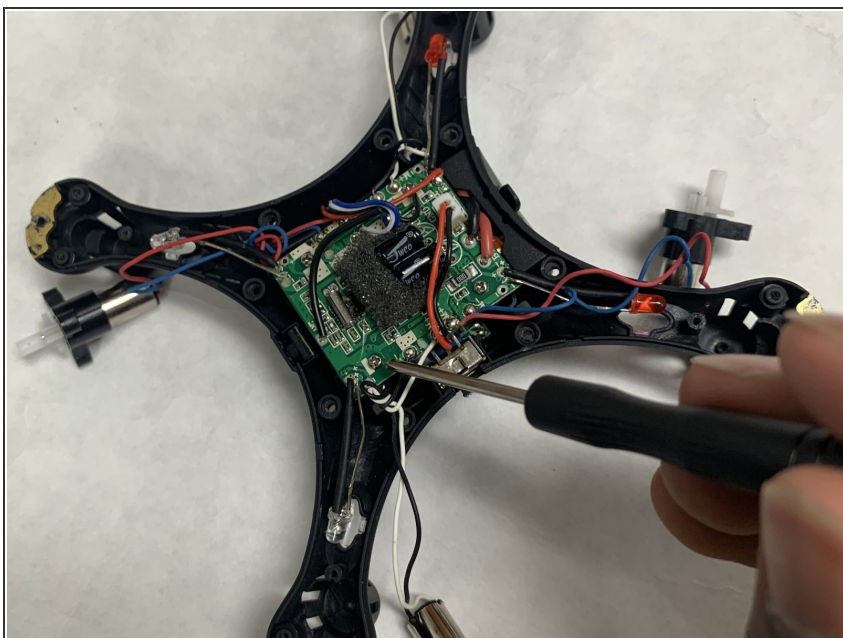
- Remove the propeller motor screws (3 per motor).
- ⓘ The plastic screw housing is attached to the motor.

Step 7



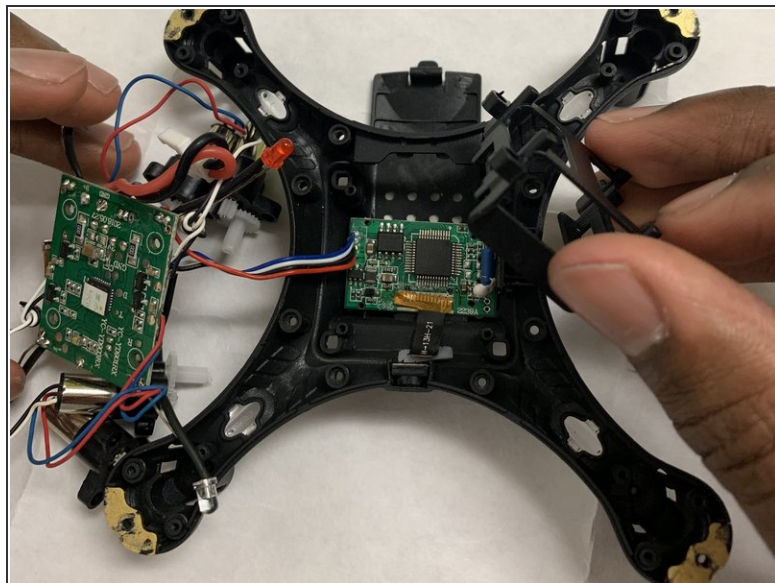
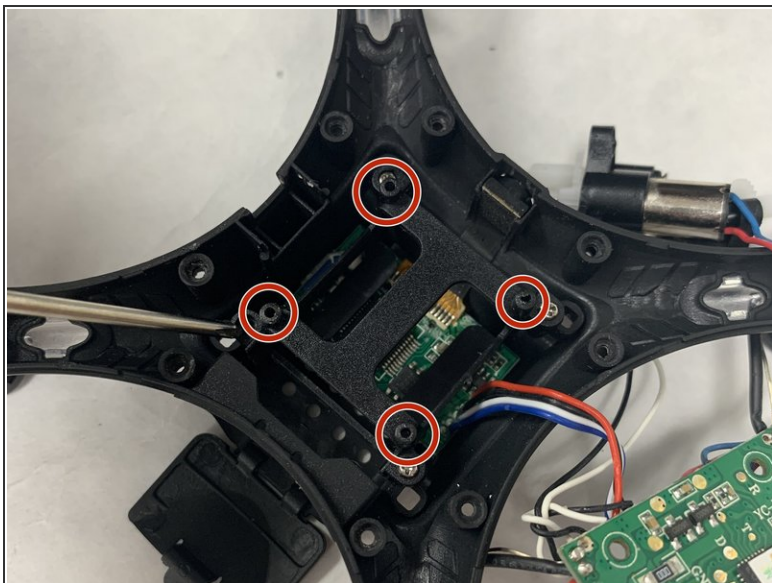
- Depress the tab to open the battery housing.
- Disconnect the battery connectors
- Remove the battery.

Step 8



- Using the Phillips #0 screwdriver, remove the four circuit board screws.
- Remove circuit board.

Step 9



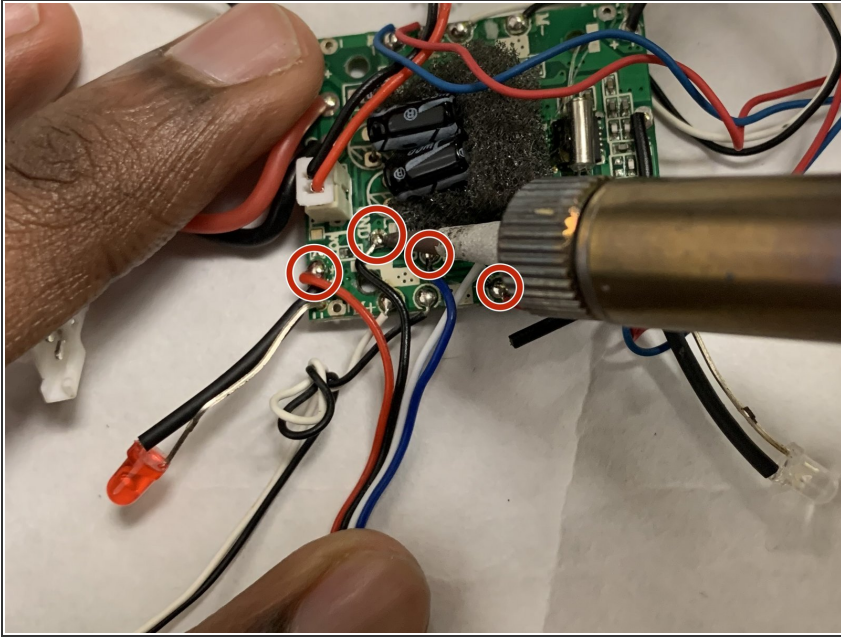
- Remove the four battery housing screws with the Phillips #0 screwdriver.
- Remove the battery housing to reveal the camera circuit board underneath.

Step 10



- Pull upwards on the strip to remove the camera out of its slot.

Step 11



- Remove camera circuit board from housing.
 - On the main circuit board, desolder the connection points connecting to camera circuit board.
 - Four wires need to be desoldered. Colours include: Red, white, black and blue.
- ⓘ For more information on soldering connections, please visit the [How to Solder and Desolder Connections guide](#).

To reassemble your device, follow these instructions in reverse order.