



Psion 5 Teardown

Written By: Peddy



INTRODUCTION

Here's a Psion Series 5 for disassembly. It's manufactured in 1997 and made in the UK. It was very popular for business men because of the stable OS, named EPOC. (Now known as Symbian OS) It's powered by two AA batteries. It has a 640x240 pixel greyscale LCD with a backlight. The keyboard is generally considered to be amongst the best for its size, with large-travel keys and touch-type capability. The most common problem was a design fault in the screen and keyboard cable. By opening and closing, the cables get stressed and lead to vertical lines on the screen.

TOOLS:

- [Precision Utility Knife](#) (1)
 - [Fingers](#) (1)
 - [Phillips #00 Screwdriver](#) (1)
-

Step 1 — Psion 5 Teardown



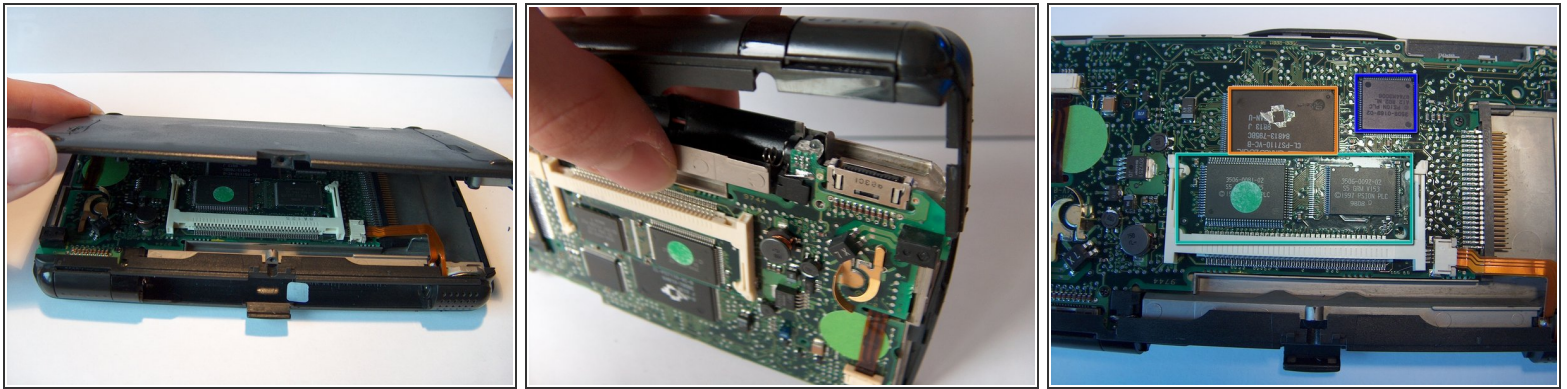
- A Psion Series 5!
- On screen, it has a permanent taskbar. 8MB internal store. A big keyboard. And you can record while the Psion is closed with external buttons.

Step 2



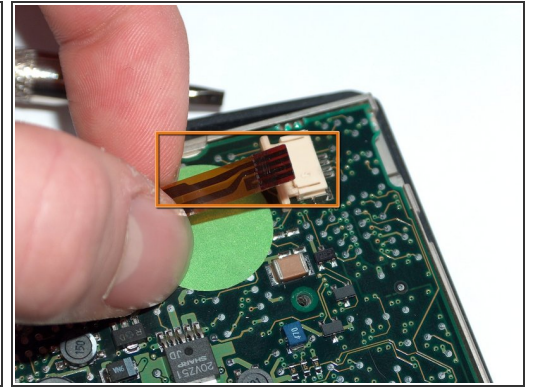
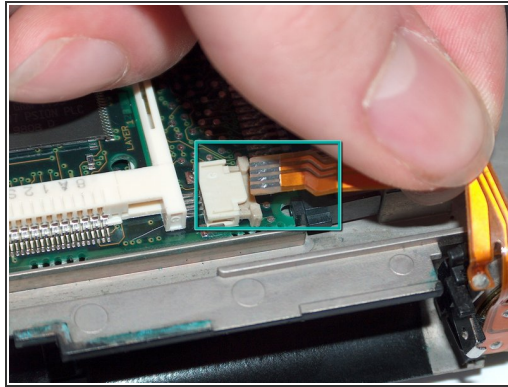
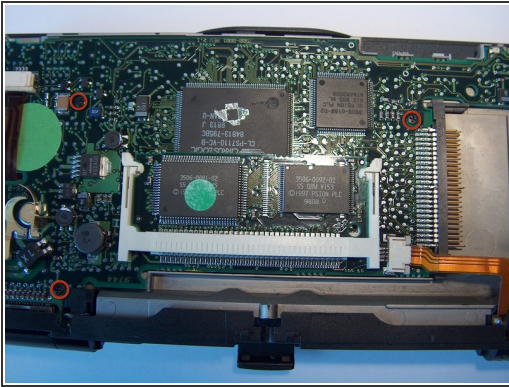
- Let's turn it!
- There's a Compactflash card. You can use it for backups or documents.
- Remove the three screws, holding the backcase.
- There was a "guarantee void if removed" sticker. Anyway, this device is over 12 years old, there's no guarantee!

Step 3



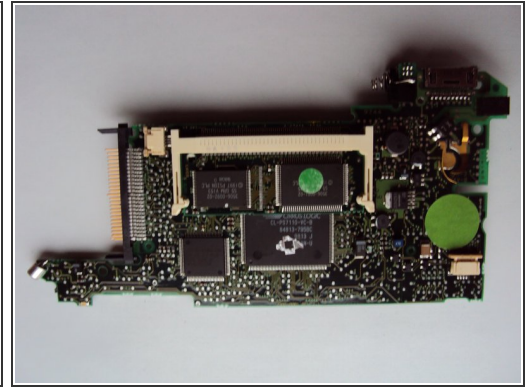
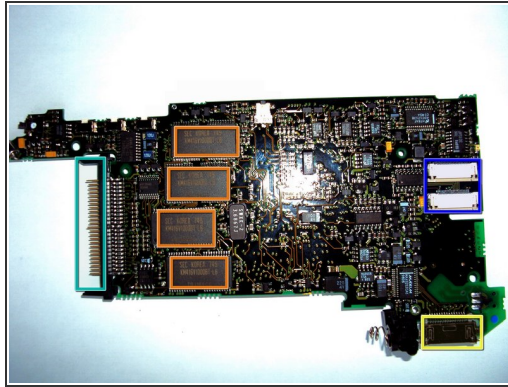
- Open it from the back to the front.
- Don't forget to remove the plastic on the back.
- Now let's see what we found:
 - EPOC with the OS stored in ROM. It's removable for the different languages & countries.(Chip with the green stick on it.) The other one is the 4MB RAM.
 - ARM 710 RISC-processor with 18.43MHz.
 - The touchscreen controller.

Step 4



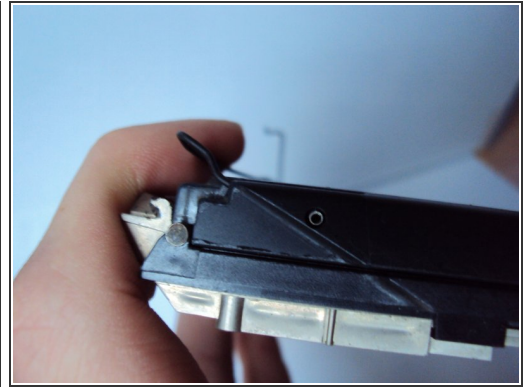
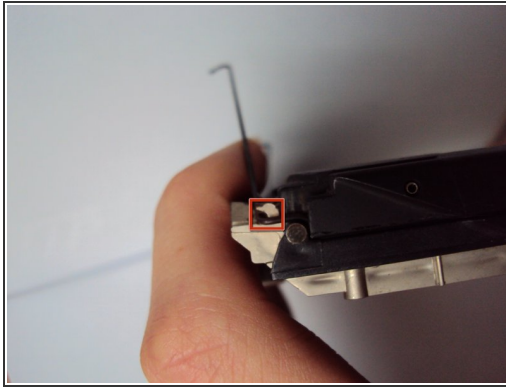
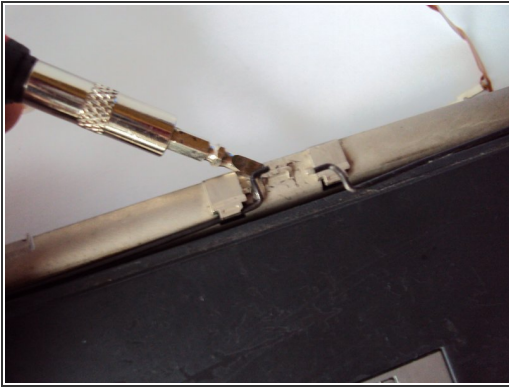
- Remove the three screws, holding the mainboard in place.
- ⚠ Don't remove the mainboard, there are some ribbon cables.
- Remove the two ribbon cables, one on the left, the other one on the right.
 - Used for power and speaker.
 - Used for powering the backlight.

Step 5



- Now, slide up the Psion.
- Carefully remove the mainboard and diconnect the two ribbon cables. (That's the faulty design I mentioned in the description.)
- Let's see the other side of the mainboard:
 - 4x 2MB of RAM.
 - Connectors for the two ribbon cables. The blu one's the keyboard and the brown one's screen and touchscreen cable.
 - Compactflash card connector.
 - Connector for PC synchronisation,Printer and internet.
- Again, the front of the mainboard.

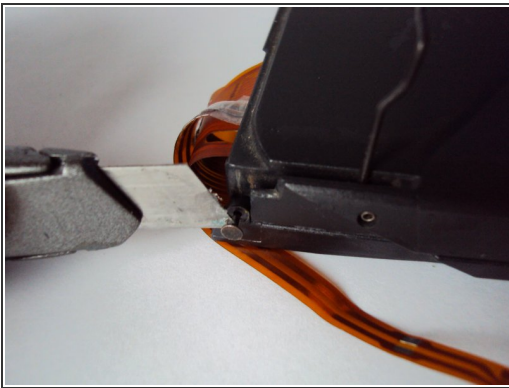
Step 6



⚠ That's the trickiest part in the whole disassembly.

- First, remove the spring hinge.
- Unhook them on both sides. Careful not to snap any of the ABS casing!

Step 7



- Slide the screen from the chassis.
- Use a knife to slide out the metal peg holding the keyboard to the screen on each side.

Step 8



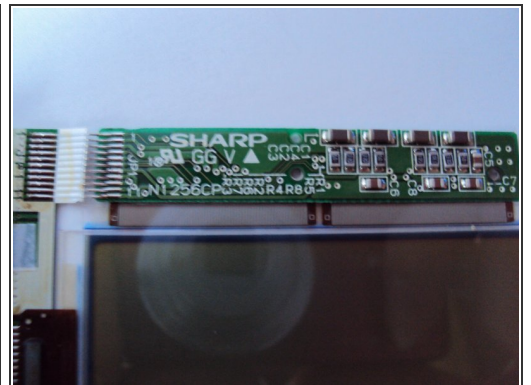
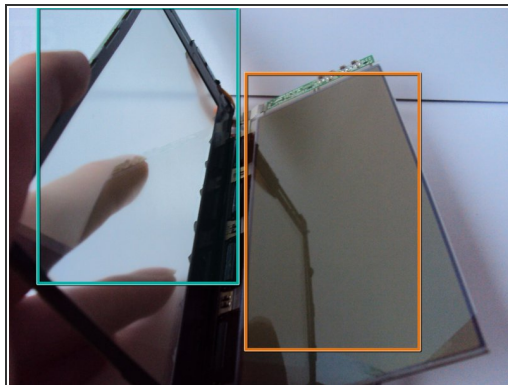
- Remove the keyboard.
- A total of 12MB internal. Made in UK 1997.

Step 9



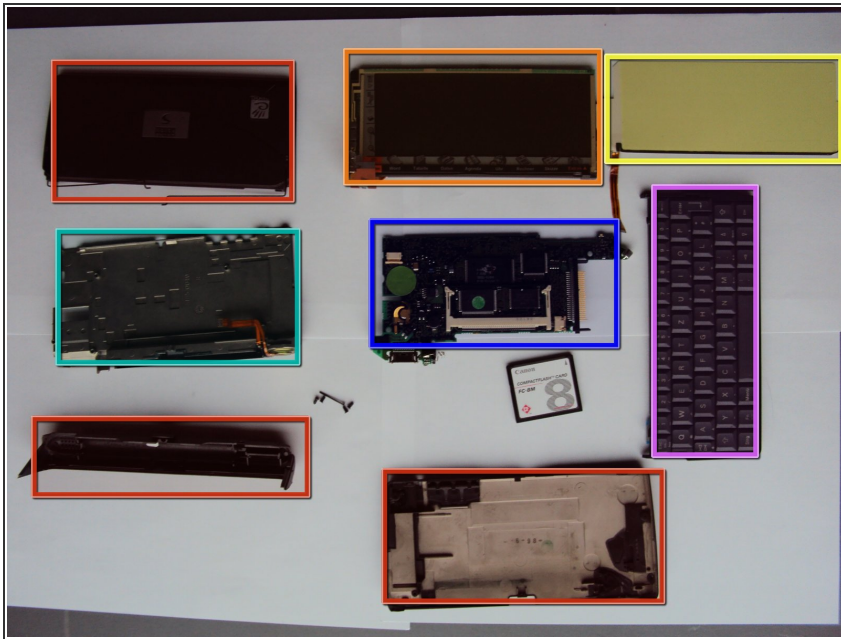
- You can pull out the screen from the plastic case.
- That's the backlight. It shines very green, so instead of black/white you had grey/green. Today, you would install some LEDs and that's it.

Step 10



- That's the screen.
- You can see, the screen is made of two parts:
 - That's the touchscreen.
 - That's the greyscale LCD screen from Sharp.

Step 11



- Everything laid out:
 - Plastic case.
 - LCD screen and touchscreen.
 - Backlight.
 - Chassis with speaker.
 - Mainboard.
 - Keyboard (German layout)
- Thank you for reading & watching my Teardown :)

To reassemble your device, follow these instructions in reverse order.