



Purple SmartVP Camera Replacement

Replace a malfunctioning camera to take pictures and video again with your Purple SmartVP.

Written By: Brian Maulucci





TOOLS:

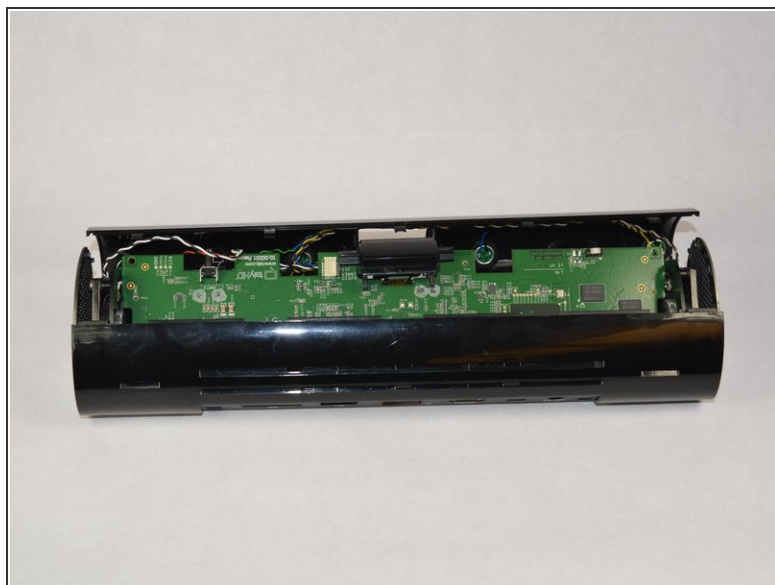
- [Spudger](#) (1)
 - [T9 Torx Screwdriver](#) (1)
 - [T10 Torx Screwdriver](#) (1)
-

Step 1 — Camera



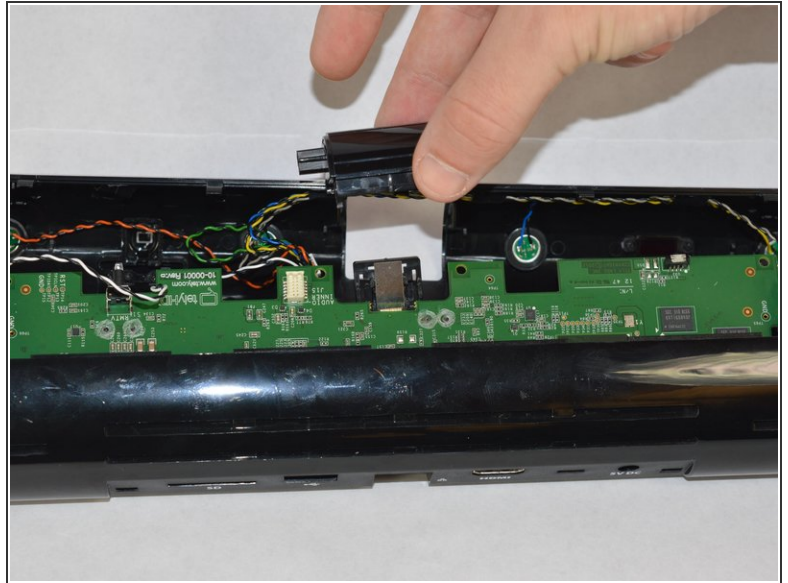
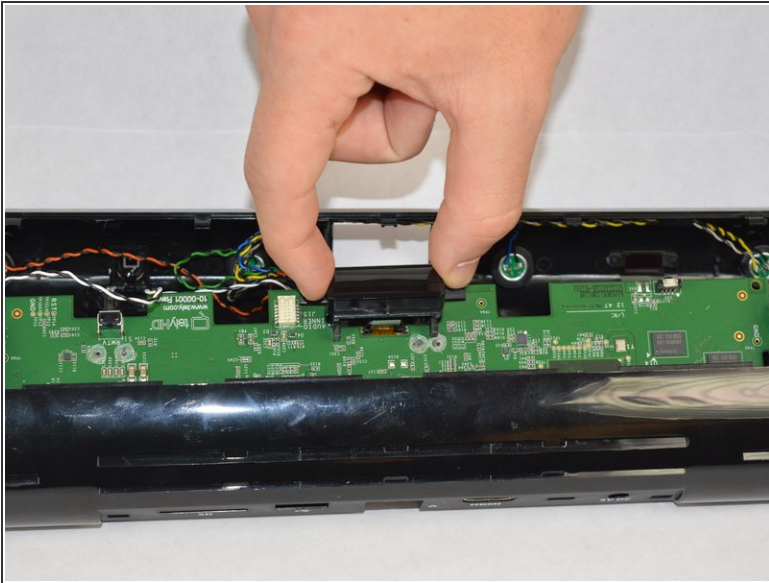
- Remove the top bar by removing the 5cm hex T10 screws on the back of the device as shown. Then gently pull off the top bar from the main component.

Step 2



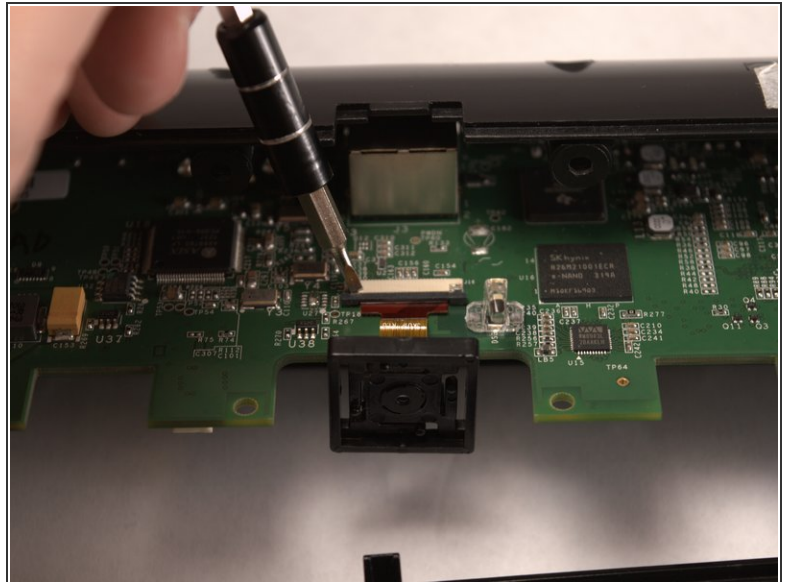
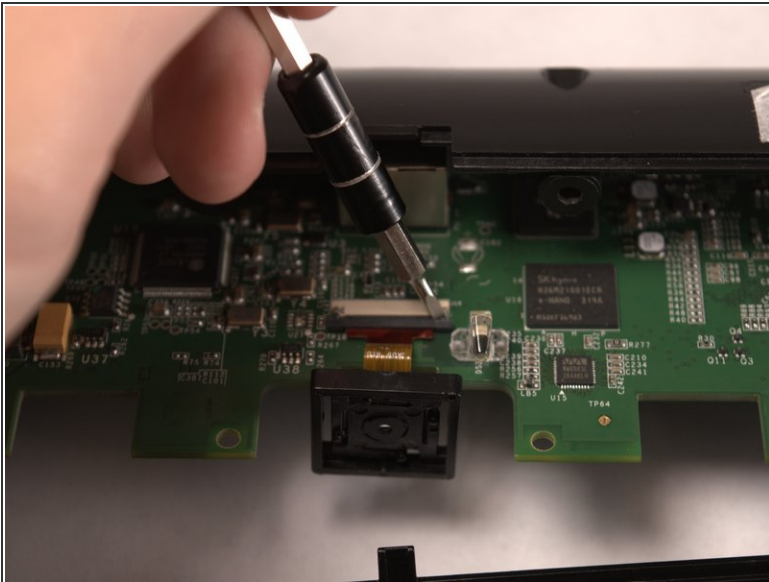
- Remove the 1.2 cm hex T9 screws and gently open up the device.

Step 3



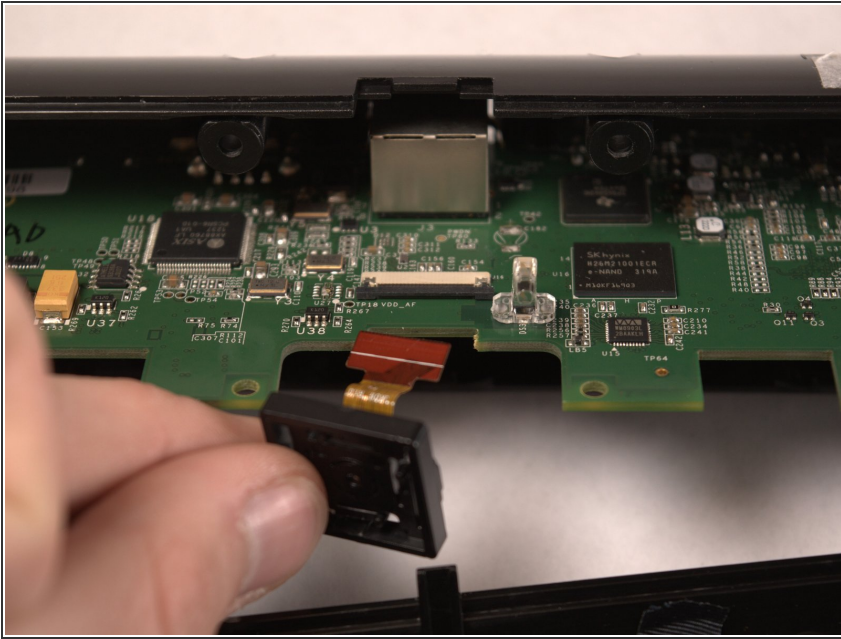
- Detach the camera cover from the motherboard. Be very careful to not damage any of the components on the motherboard.

Step 4



- Use a plastic spudger to push the black sliding cable connector away from the white bracket.

Step 5



- Gently remove the ribbon cable from the connector.

To reassemble your device, follow these instructions in reverse order.