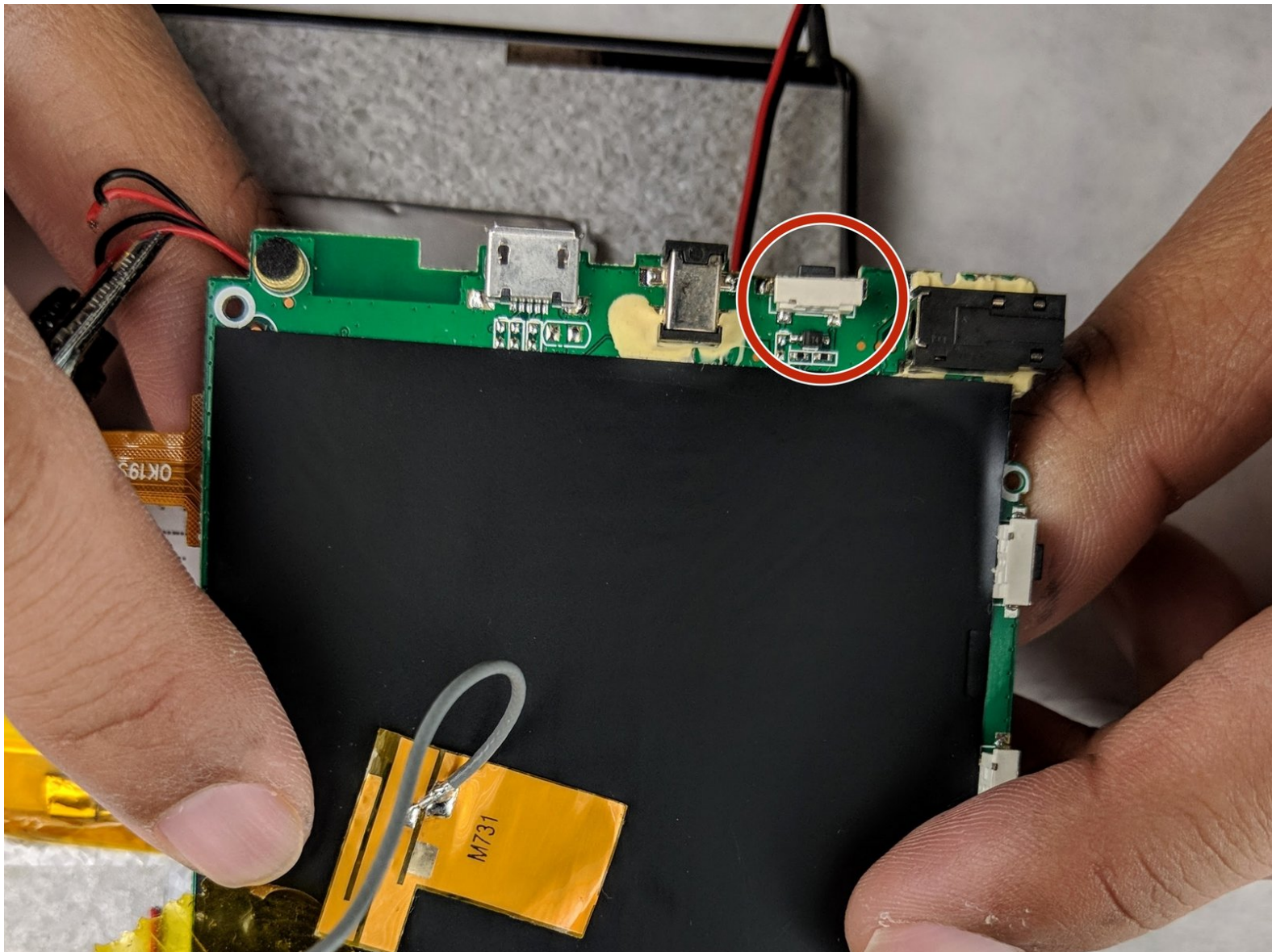




# Pyle Astro PTBL7C Power Button Replacement

How to replace a Pyle Astro PTBL7C power button.

Written By: Andrew Redifer



## INTRODUCTION

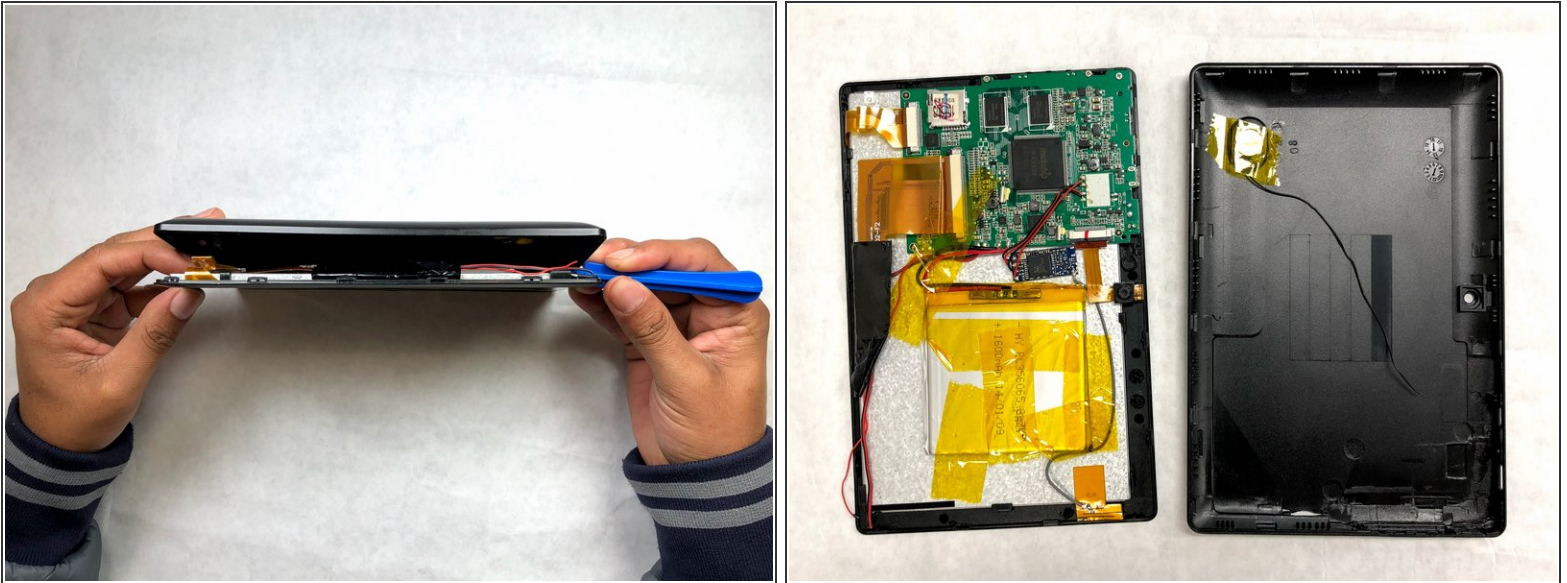
The Pyle Astro's power button is a simple push button switch that is soldered onto the main PCB. Use this guide to replace your tablet's power button.

---

### TOOLS:

- [Soldering Iron](#) (1)
  - [Desoldering Braid](#) (1)
  - [iFixit Opening Tools](#) (1)
  - [JIS #0 Screwdriver](#) (1)
-

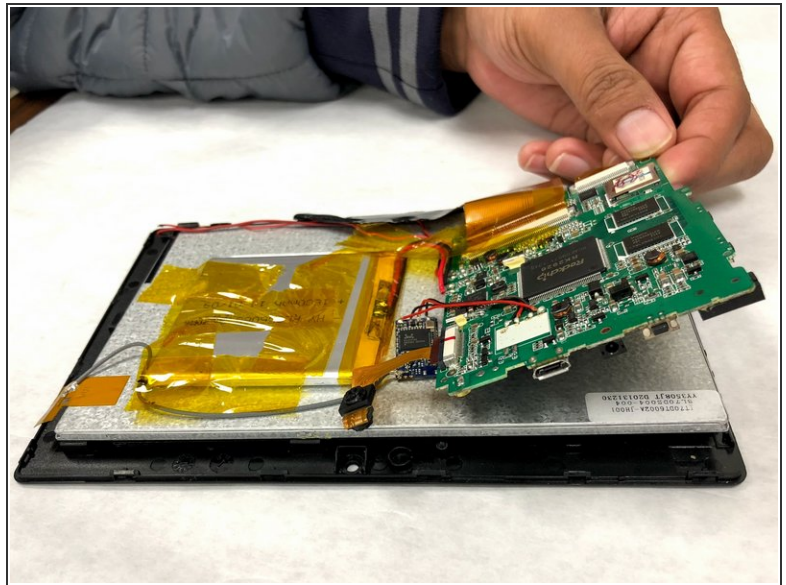
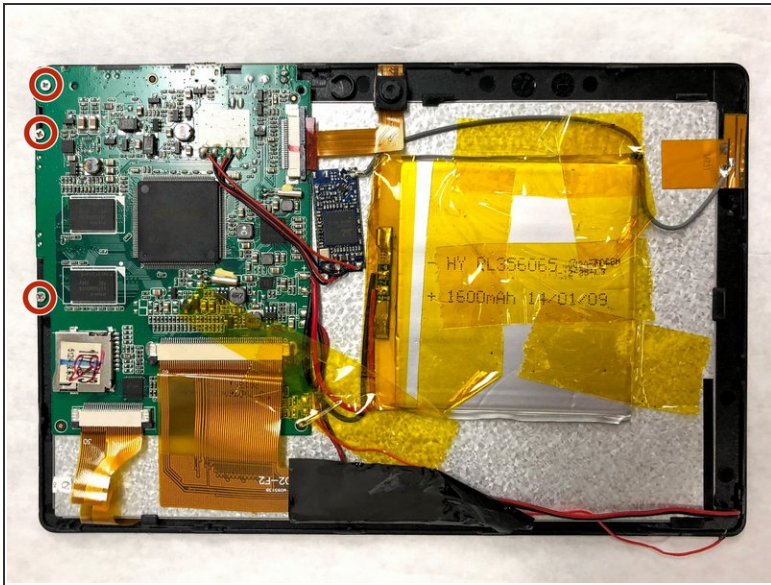
## Step 1 — Power Button



- Using the plastic opening tool, work your way along the edge of the tablet.
- ⓘ The display is held in place by plastic tabs which slide into recesses in the rear plastic panel.
- Once all clips are released, gently open and separate the front display assembly and the rear plastic panel.
- Place the front display assembly facing front side down to expose the inside.

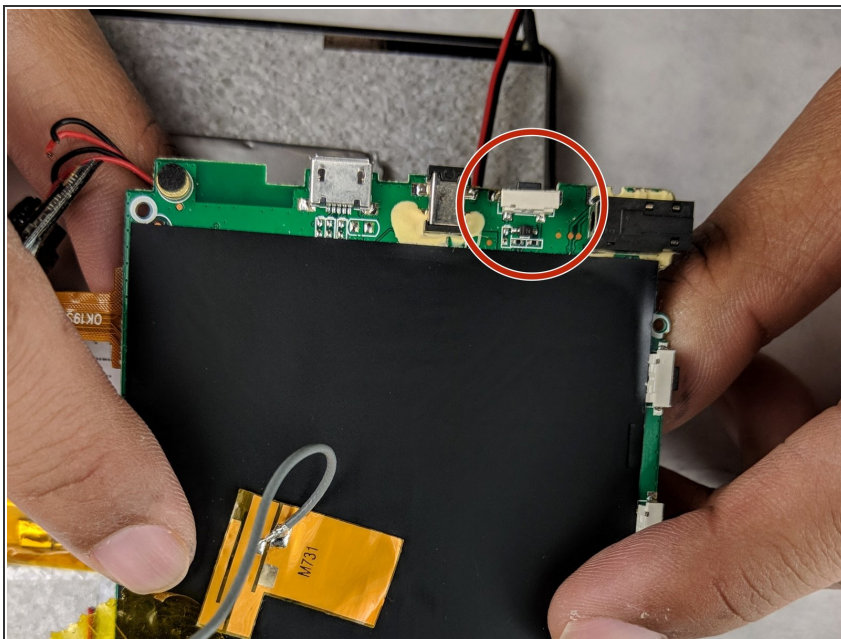


## Step 2



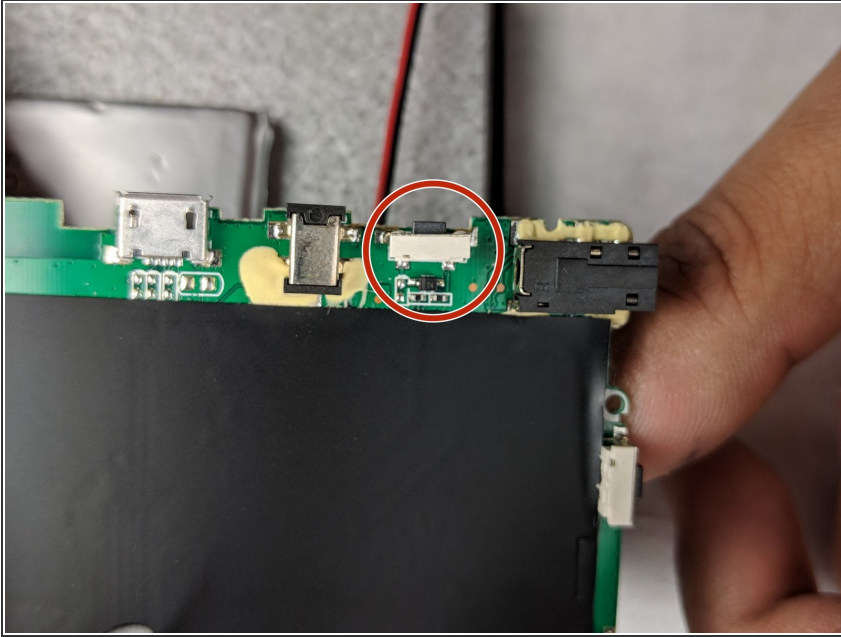
- Remove the three 4 mm JIS #0 screws to release the PCB board.

## Step 3



- Flip the PCB board upside down to expose the solder joints for the power button.
- Gently de-solder the four solder joints of the push button switch (power button).
- [How To Solder and Desolder Connections Guide](#)

## Step 4



- Install the new push button switch and solder all the connections back into place.
- [How To Solder and Desolder Connections Guide](#)

To reassemble your device, follow these instructions in reverse order.