



# Pyrus PY21S03211 Display Screen Replacement

If the display screen is broken, this guide will assist in replacing the broken screen.

Written By: Danielle Hadaway



---

## INTRODUCTION

Display screens can break from falls or scratches. Instead of purchasing a new device, replacing the screen is far more inexpensive. It's very important to keep both the large white connector and the gold connector from being pulled or torn, so keep the side panel close to the motherboard when first opening the device.



### TOOLS:

- [Phillips #0 Screwdriver](#) (1)
  - [Tweezers](#) (1)
  - [iFixit Opening Picks set of 6](#) (1)
-

## Step 1 — Display Screen



- Turn the video camera upside down so the bottom of the device is visible.

## Step 2



- Pull back the bottom tab to reveal the battery compartment.

### Step 3



- Pull back tab that is holding in the battery in place and remove the battery from the device.

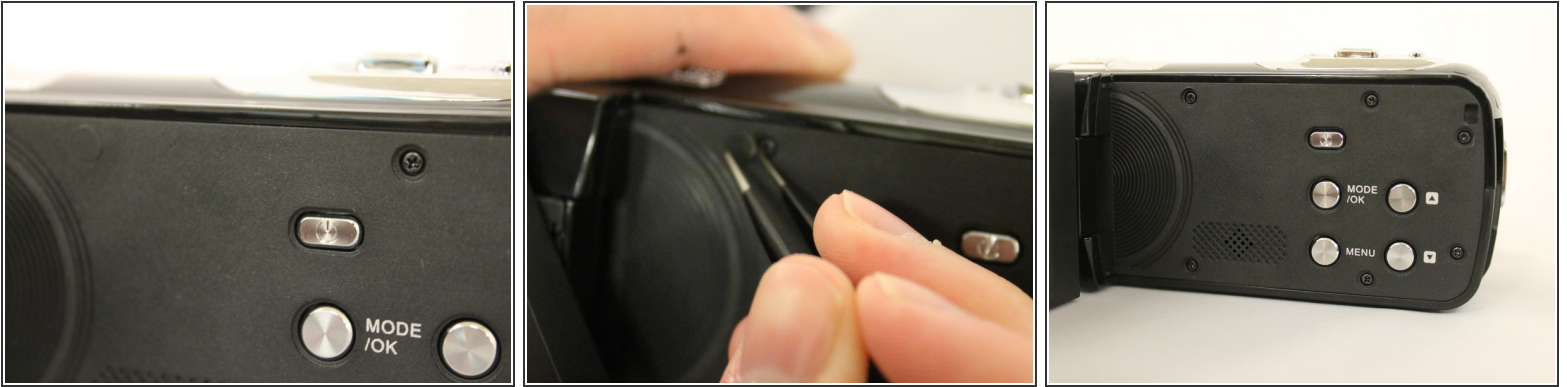
### Step 4



- Open up the display screen.



## Step 5



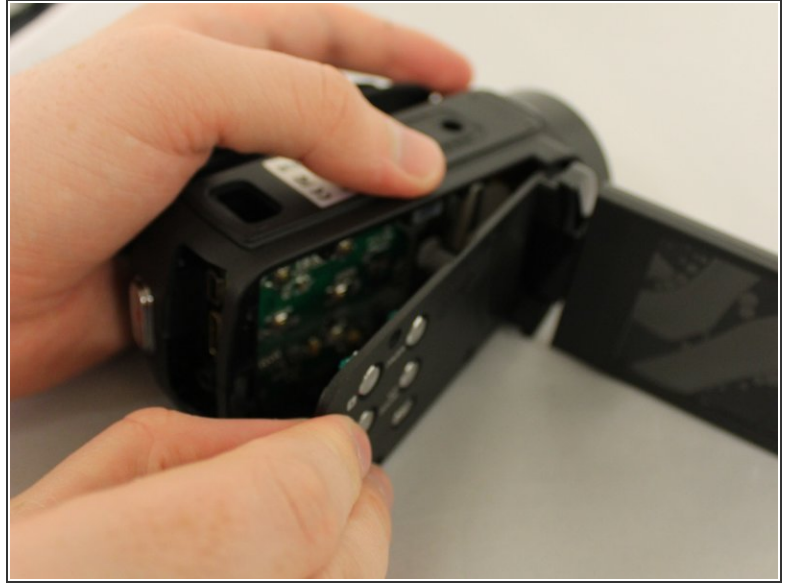
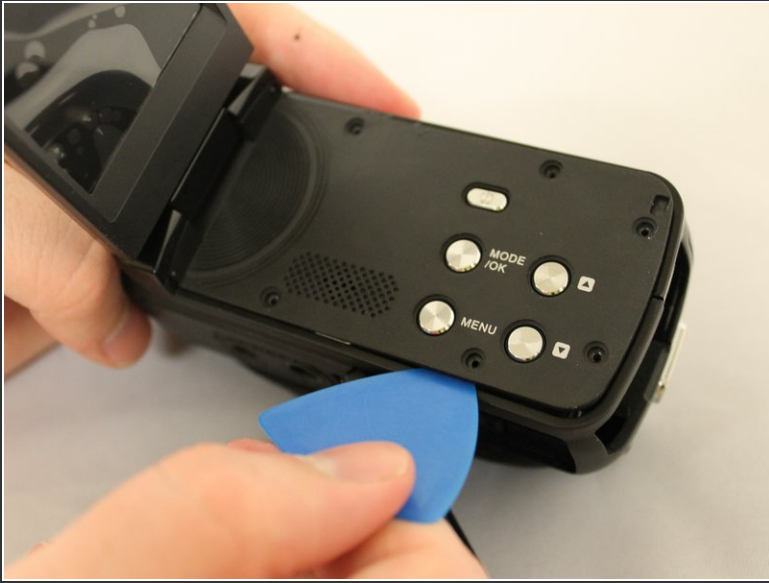
- Use tweezers to carefully peel off the circle stickers, revealing the 4mm screws.

## Step 6



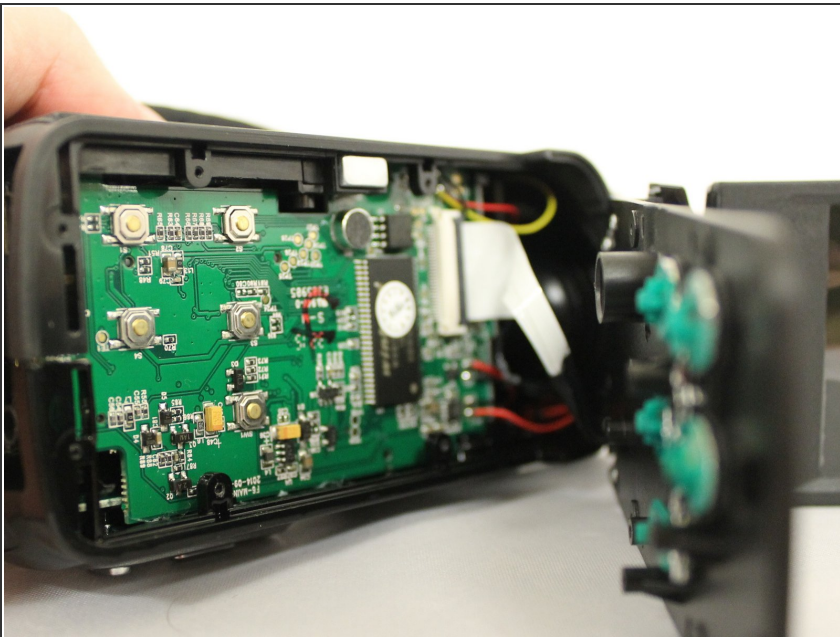
- Use a 00 screwdriver to remove all six 4mm screws from the side of the device.

## Step 7



- Use a plastic pick to pry off the side face of the device and carefully remove the side face.

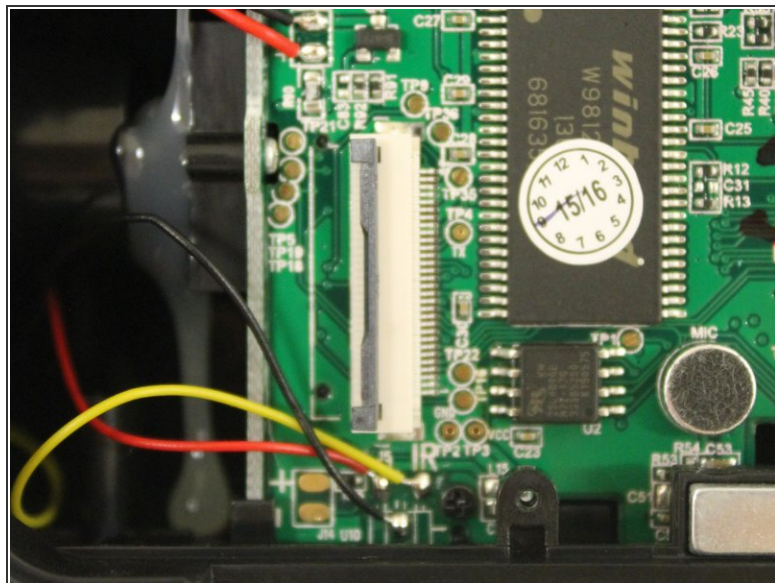
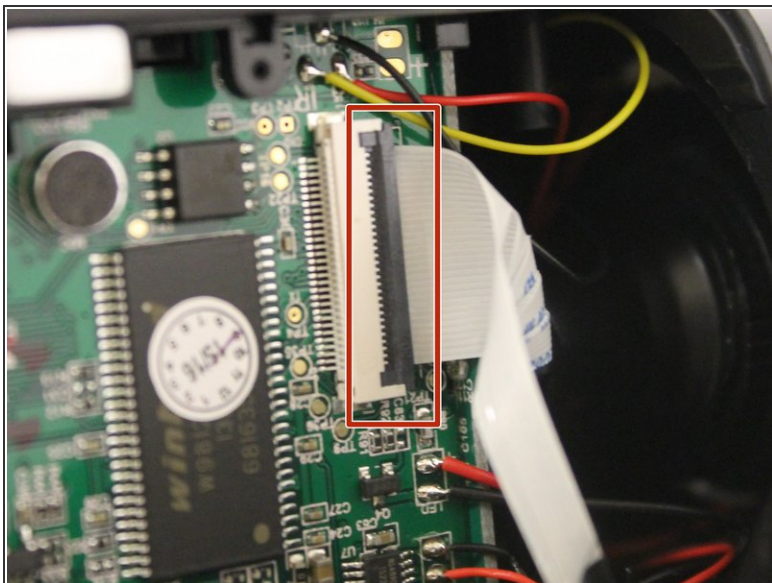
## Step 8



- Carefully open the side face. Keep the side face close to the body of the device to avoid pulling on the white wires.



## Step 9



- To remove the side face entirely, find the large white connector and flip open the grey lip with tweezers. Gently remove white connector.

## Step 10



- Put the device body to the side and keep the display screen side in front of you.

## Step 11



- Remove the four silver 4mm screw from the back side of the side face.

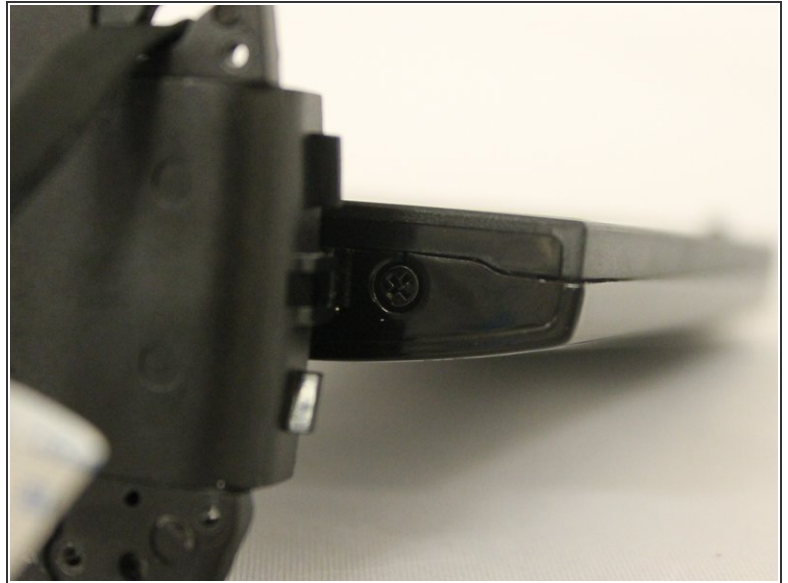
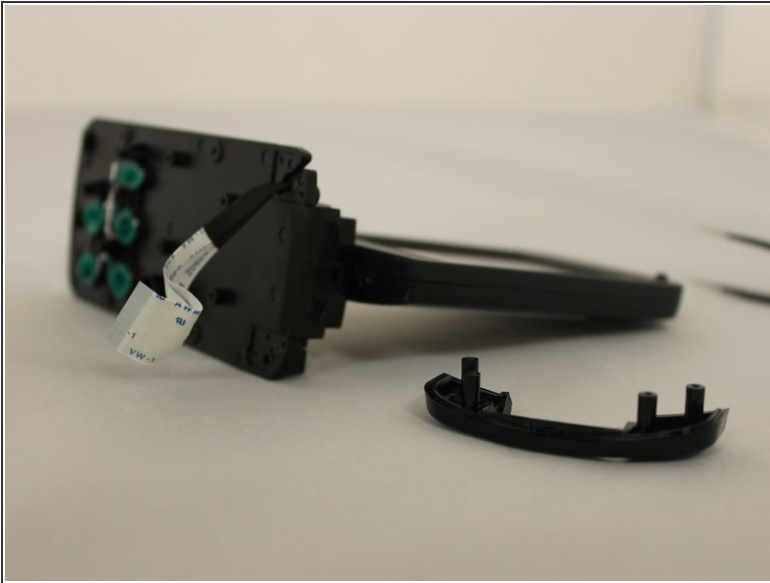
## Step 12



- Use tweezers to pry the shiny black plastic corner piece from the side face.

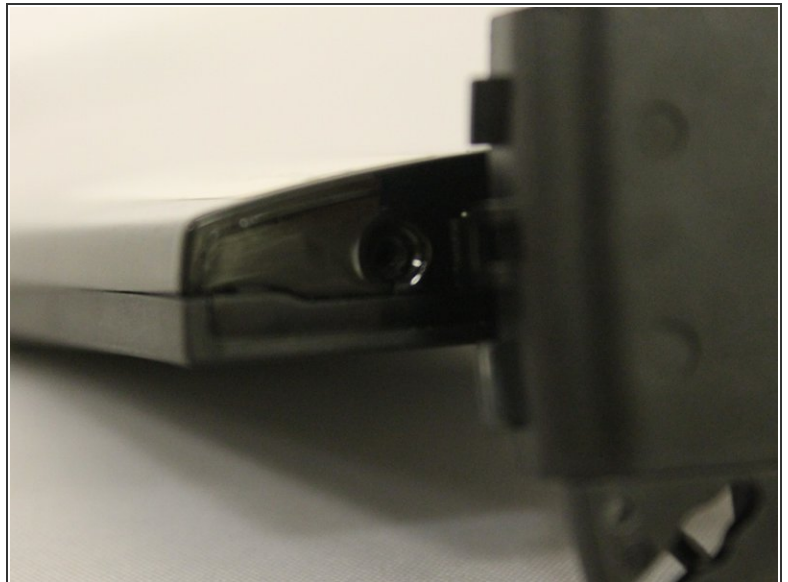
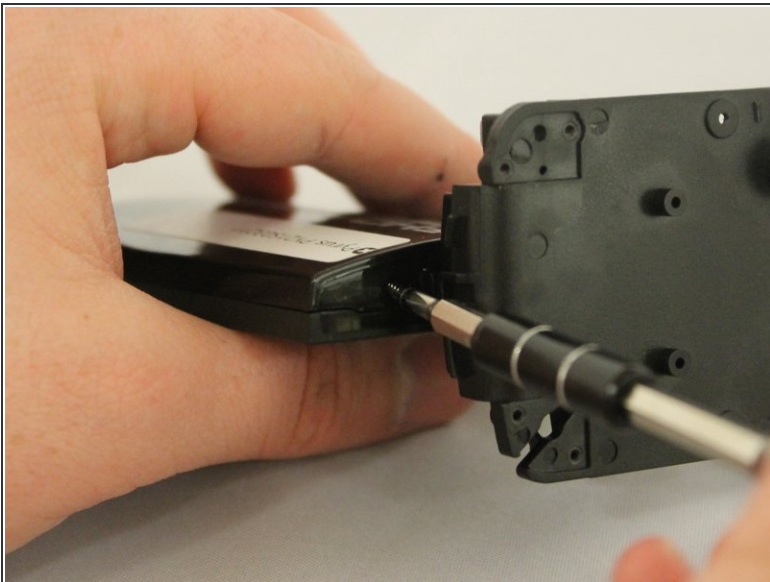


## Step 13



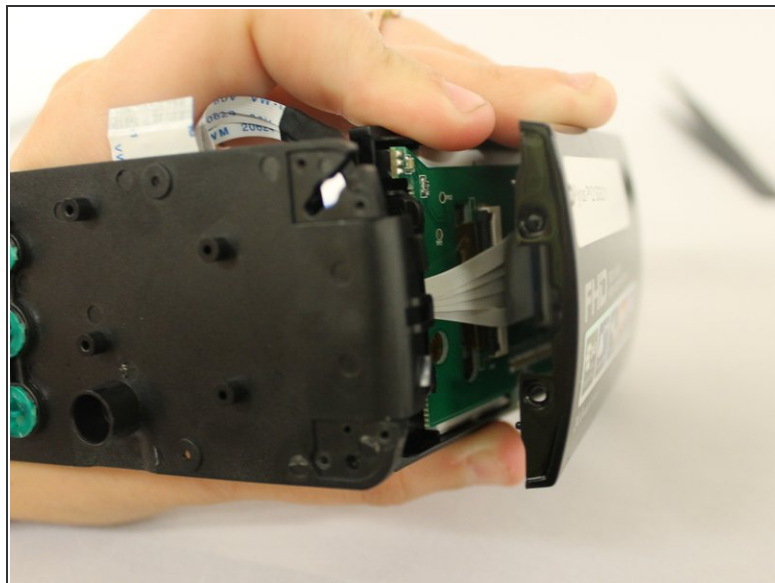
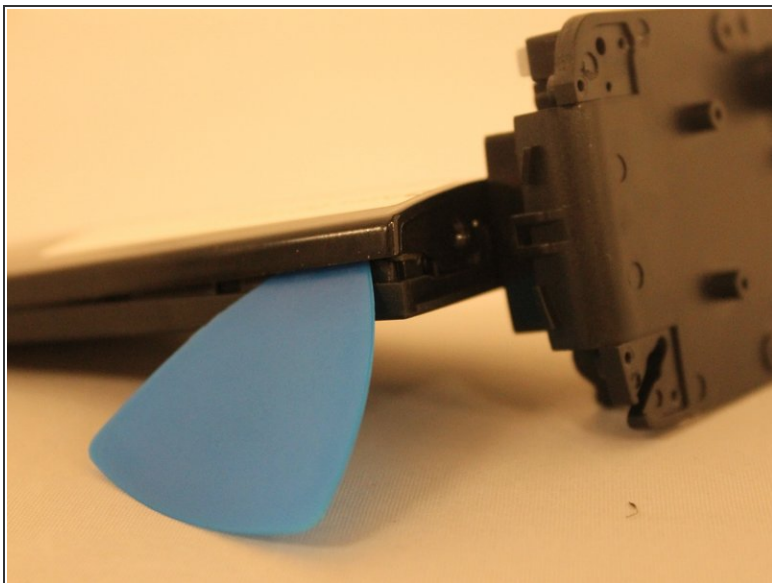
- Twist the screen to the side to reveal two black 4mm screws.

## Step 14



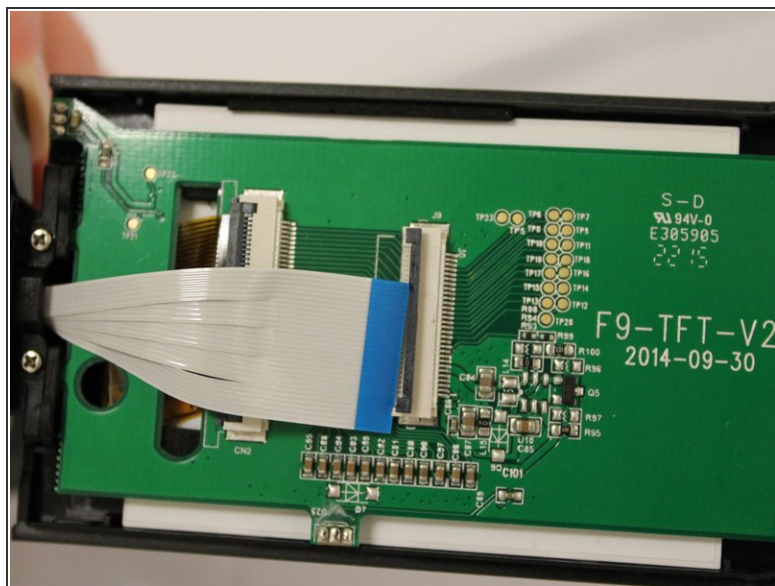
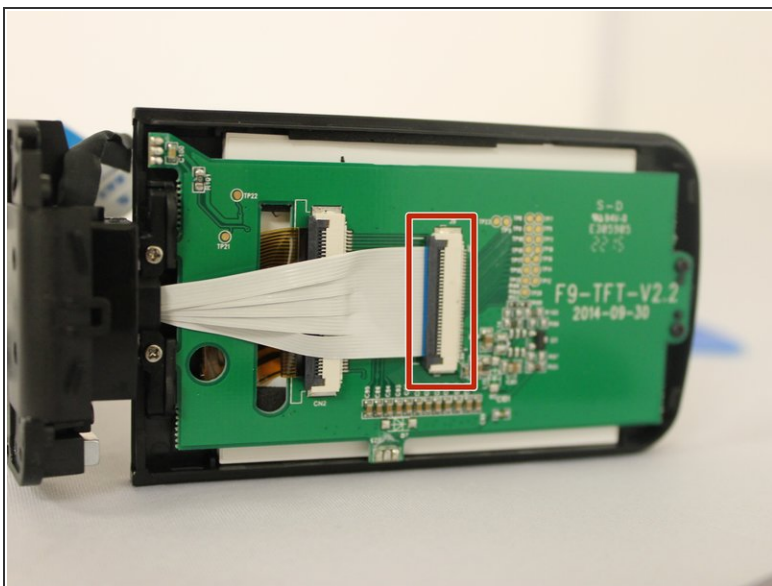
- Remove screws from both sides of the screen.

## Step 15



- Use a plastic pick to pry off the backside of the screen.

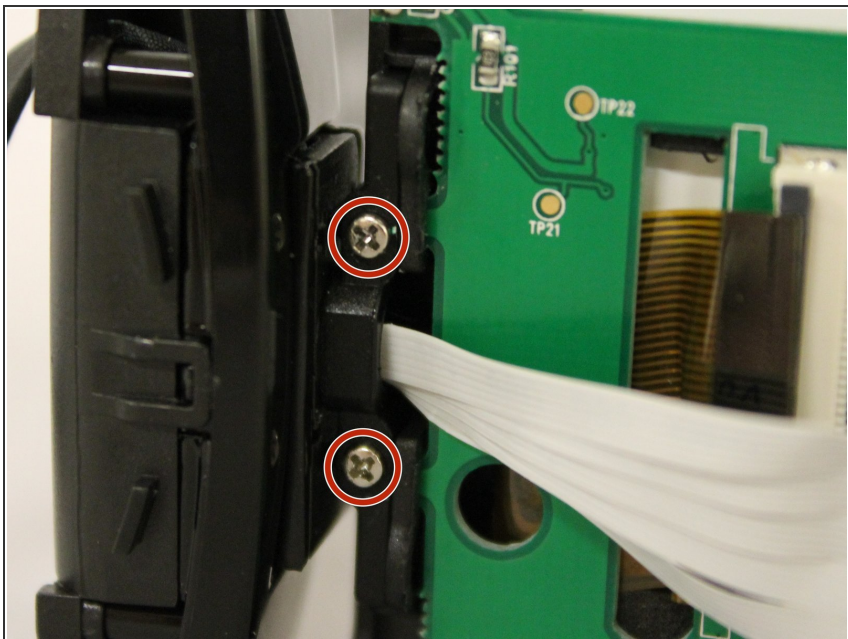
## Step 16



- Find the large white connector and flip open the grey lip with tweezers. Gently remove the white connector.

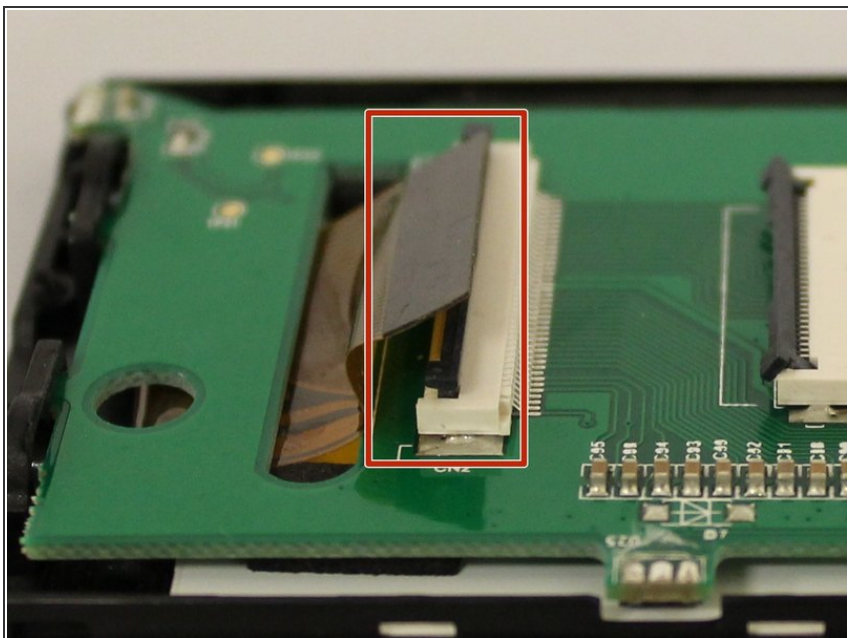


## Step 17



- Find two 4mm silver screws at the base of the screen and remove them.

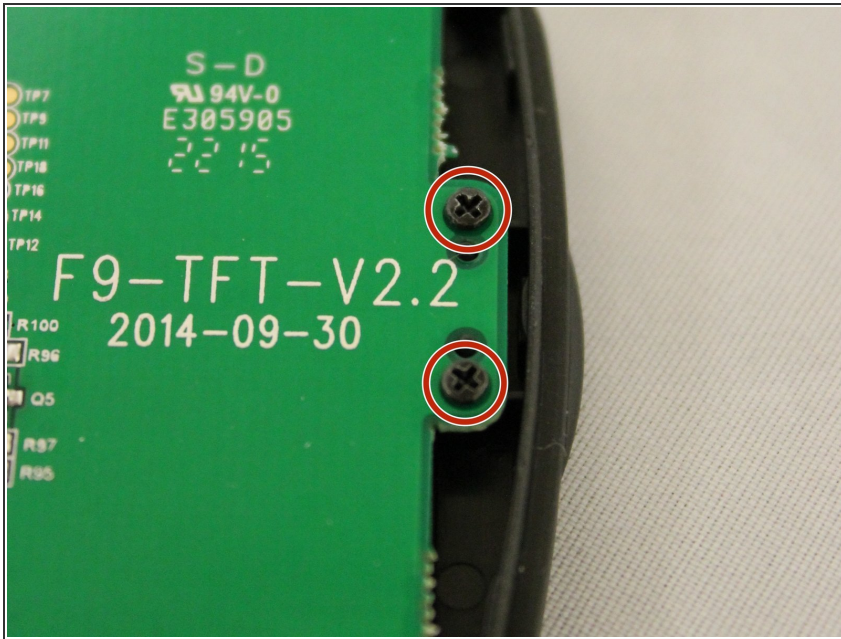
## Step 18



- Use tweezers to flip open the grey lip and gently remove the gold transparent connector.

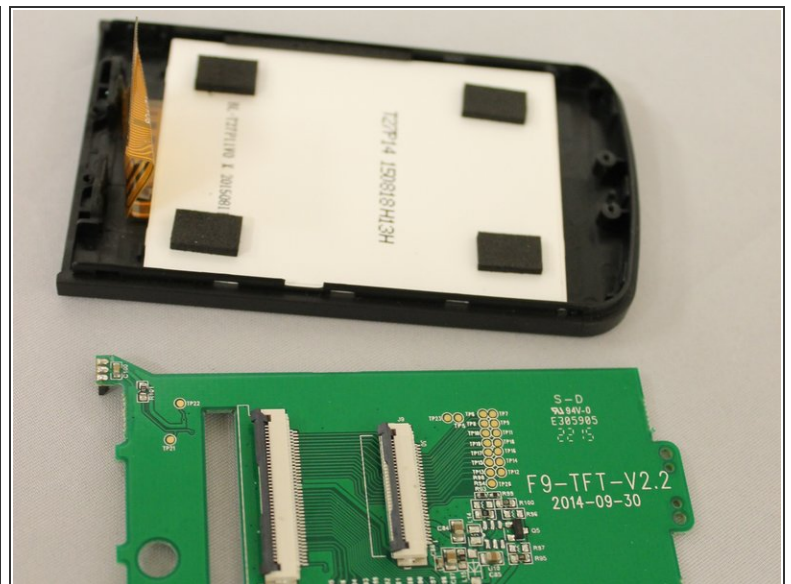
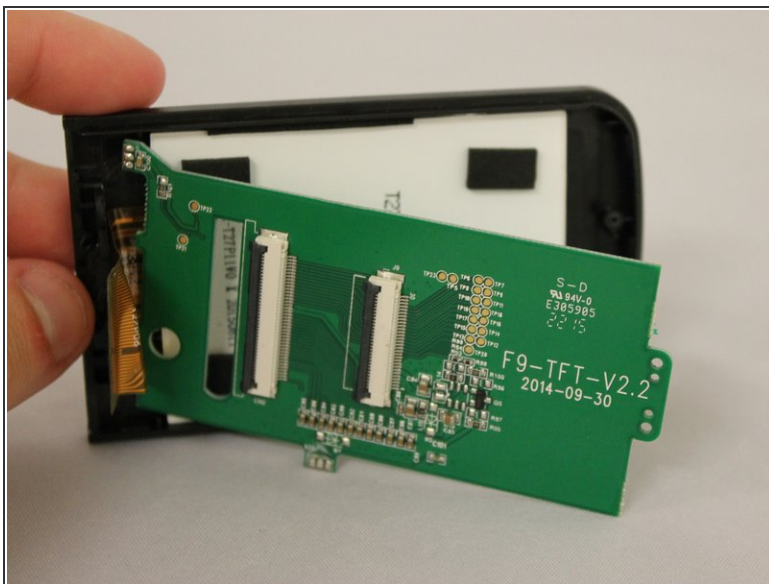


## Step 19



- Find two 4mm black screws at the top of the display screen and remove them.

## Step 20



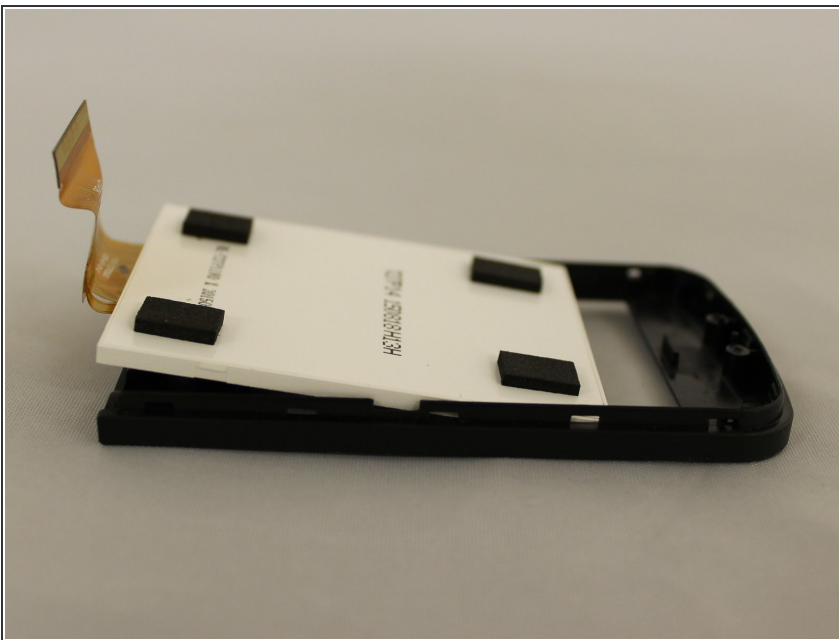
- Remove green board.

## Step 21



- Remove the white display screen with your hands.

## Step 22



- Insert replacement screen.

To reassemble your device, follow these instructions in reverse order.