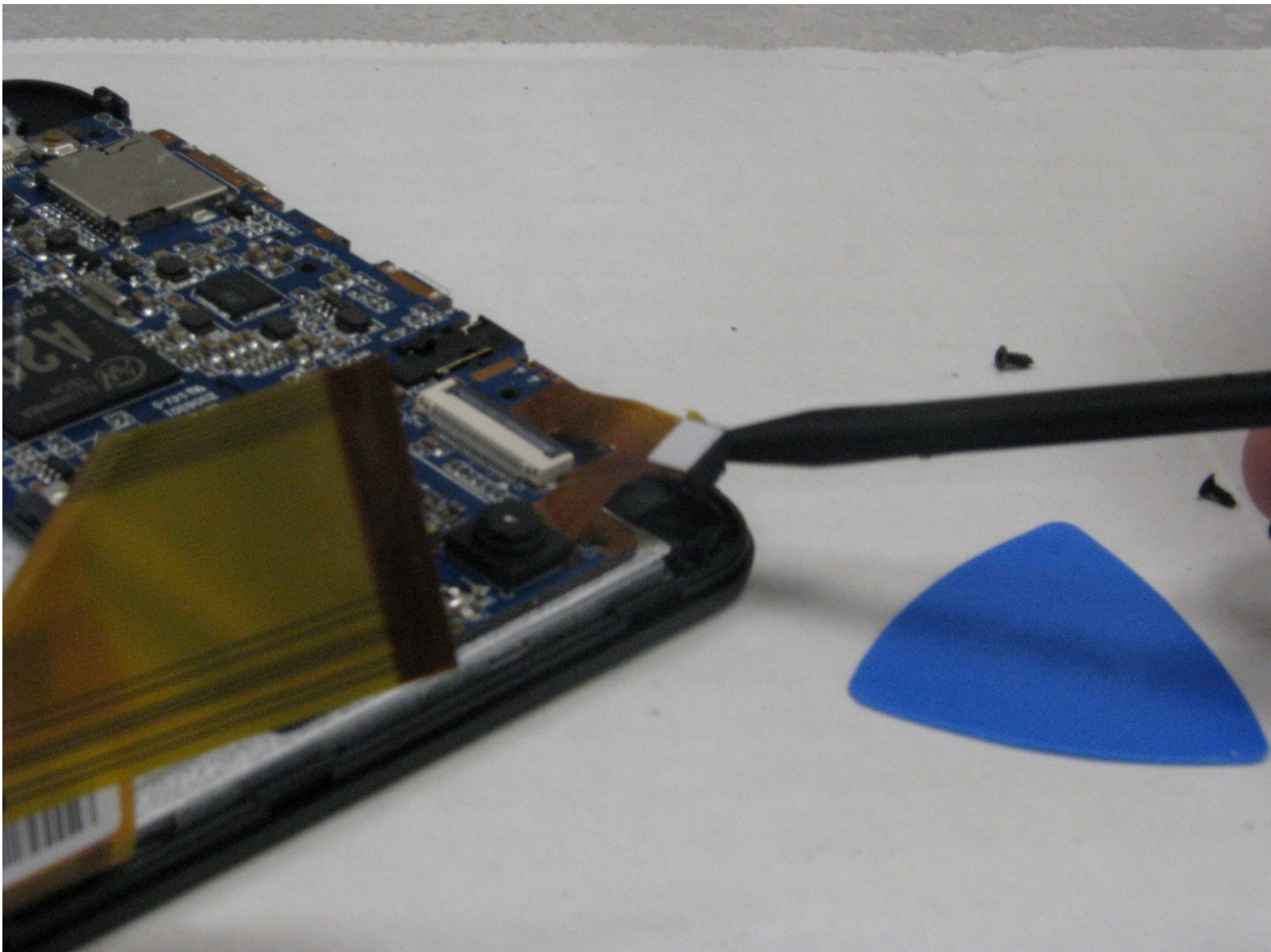




QFX IT-437 Camera Assembly Replacement

This step-by-step guide will show how to replace the camera on the QFX IT-437 tablet.

Written By: Douglas



INTRODUCTION

This guide shows what's involved and the how-to in replacing the camera on the tablet device.



TOOLS:

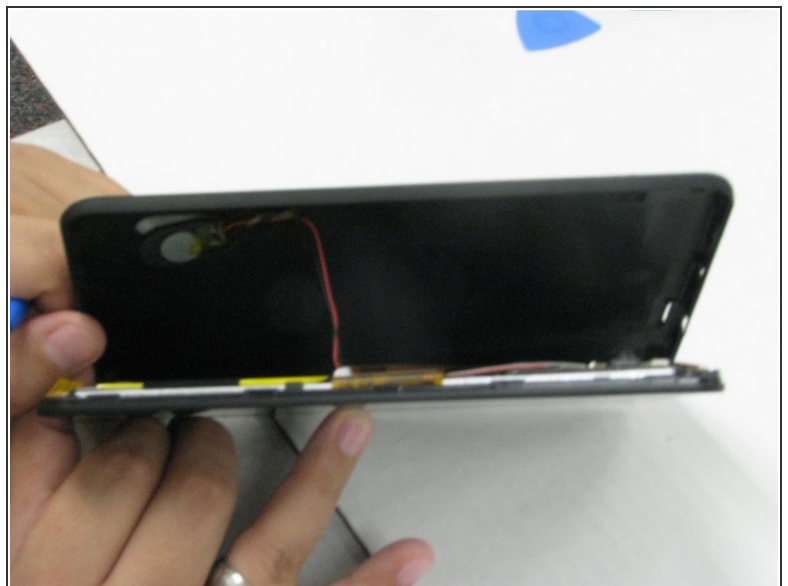
- [Spudger](#) (1)
 - [Phillips #00 Screwdriver](#) (1)
 - [iFixit Opening Tools](#) (1)
 - [iFixit Opening Picks set of 6](#) (1)
-

Step 1 — Camera Assembly



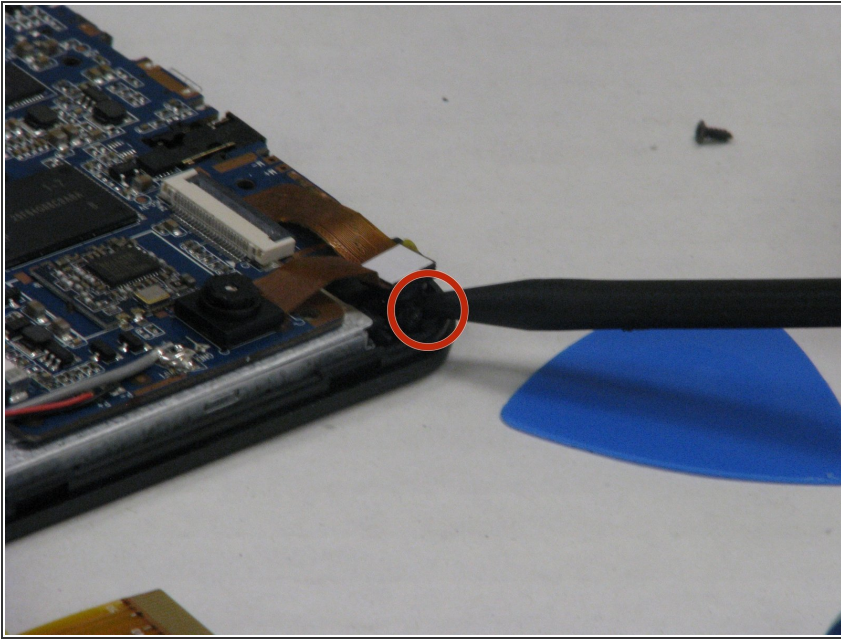
- Begin the process by using a PH00 Phillips screw driver.
- Remove the two 1.2mm x 3mm screws at the bottom of the tablet.

Step 2



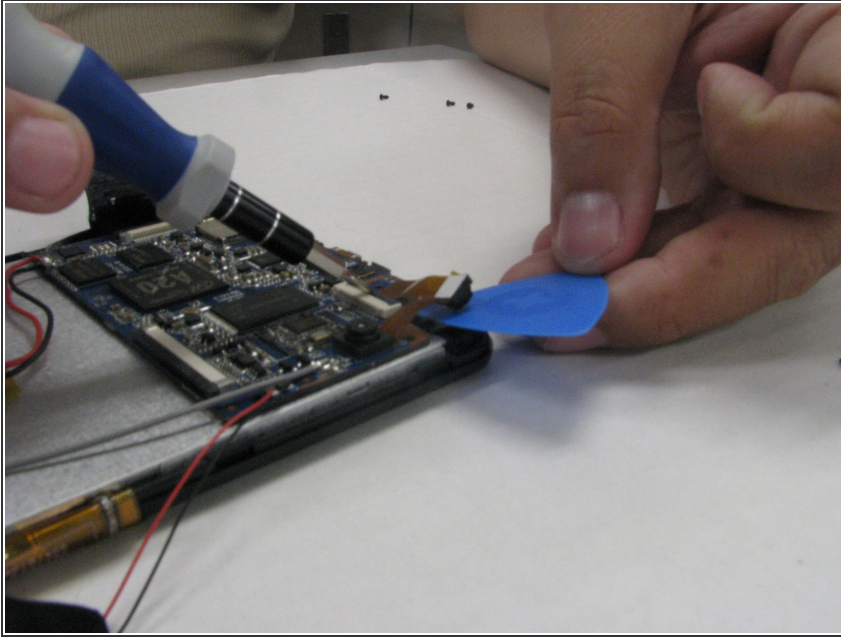
- Use the iFixit plastic opening tool to pry open the back of the tablet.
- ⚠ Do not remove the back case completely as tape has to be removed from the wires, and pulling the case apart can tear off the wires.

Step 3



- Use the spudger to unhinge the camera from its socket.

Step 4



- Use the plastic opening pick and the Phillips screwdriver to remove the camera from its soldering on the motherboard, and set it aside to be replaced.

To reassemble your device, follow these instructions in reverse order.