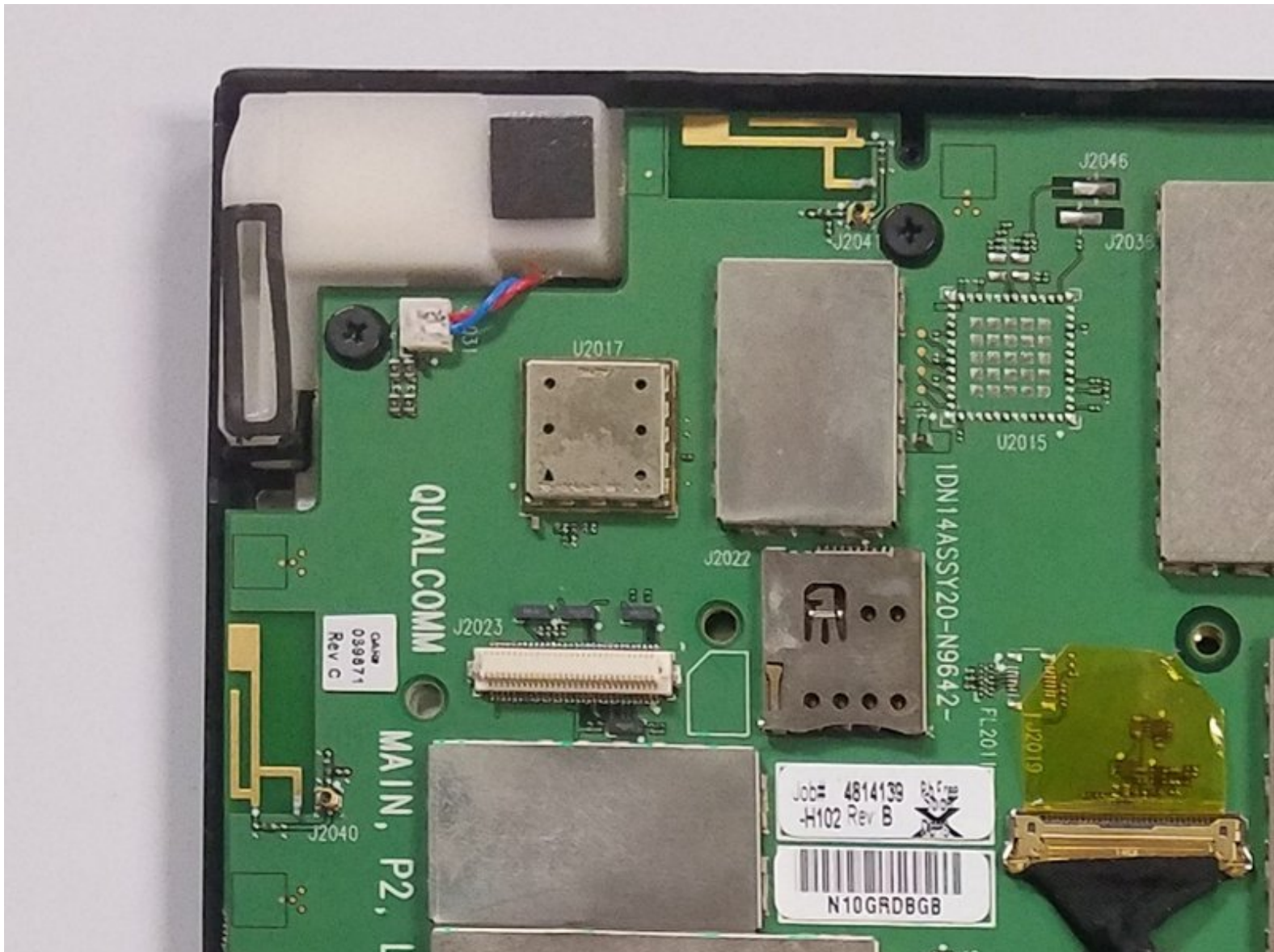


Written By: Paola



INTRODUCTION

In order to get to the speakers, the battery, back panel, and logic board need to be disassembled first.



TOOLS:

- [Phillips #1 Screwdriver](#) (1)
 - [Spudger](#) (1)
-

Step 1 — Battery



- Locate your device.
- Flip device onto its back.

Step 2



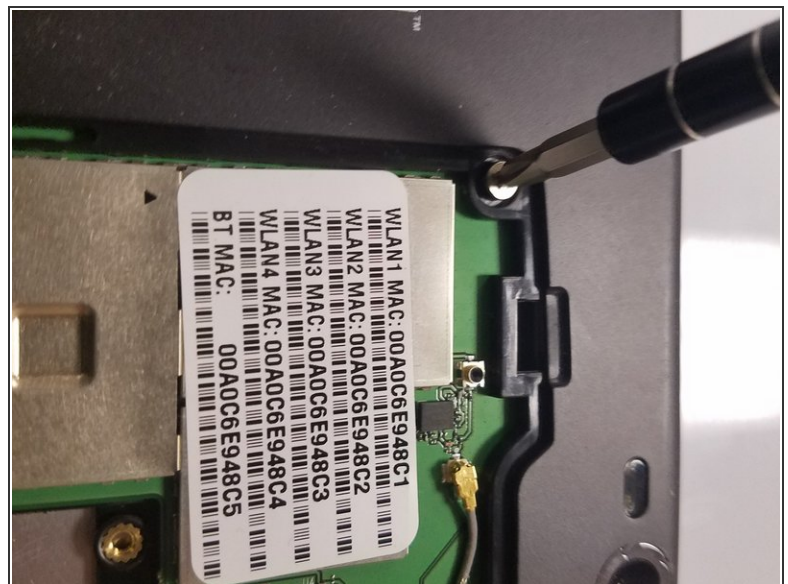
- Remove the tablet's back cover.

Step 3



- Locate the battery and remove it.
- If you wish to replace the battery you can do so here.

Step 4 — Back Panel



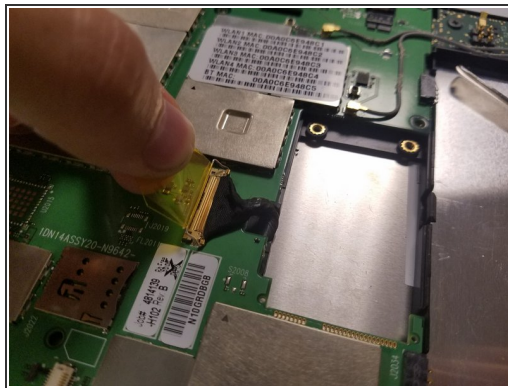
- Use the Phillips PH1 screwdriver to unscrew the five 4x2.5mm screws that hold the back cover.

Step 5



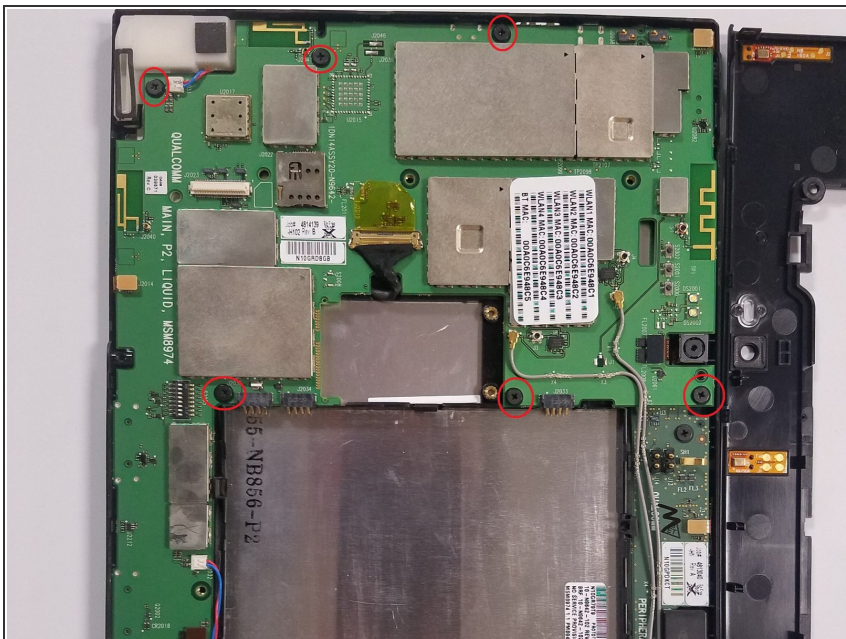
- Pop out the back cover.

Step 6 — Motherboard



- Start by disconnecting the cables attached to the motherboard
- use the spudger to lift the connectors vertically off. They should pop off with relative ease
- The last connector has a yellow tab. Pull up on the tab until the small metal catch lifts up. Then pull straight back to remove the connector from its socket.

Step 7



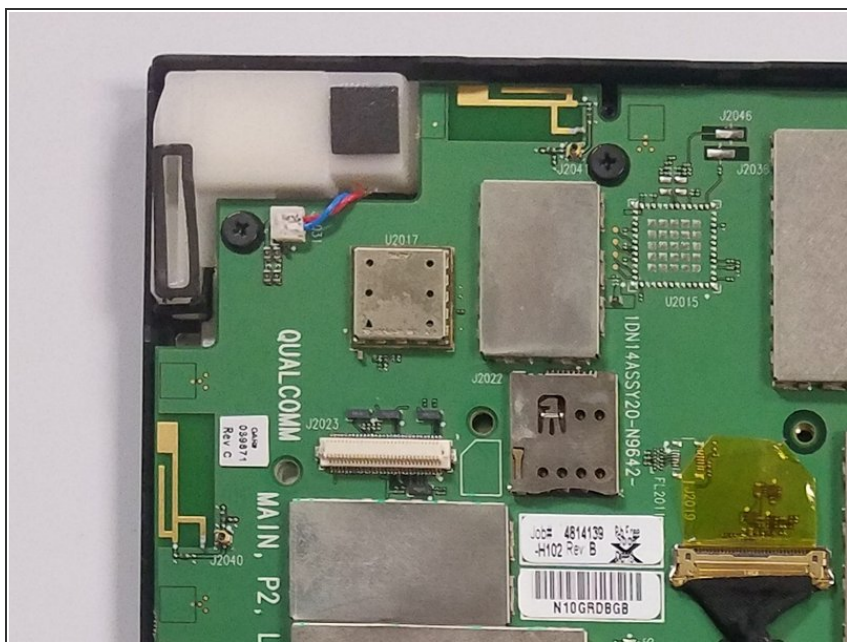
- Using the Phillips PH1, remove all 6 of the 3x2.5mm screws (circled in red) holding the motherboard in place.

Step 8



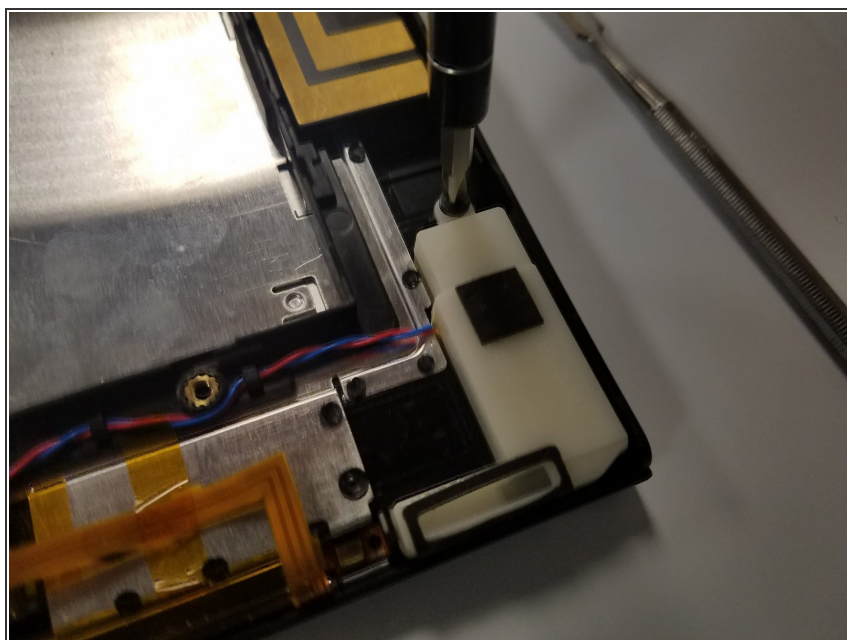
- Using the spudger lift the motherboard out of the tablet frame.

Step 9 — Speakers



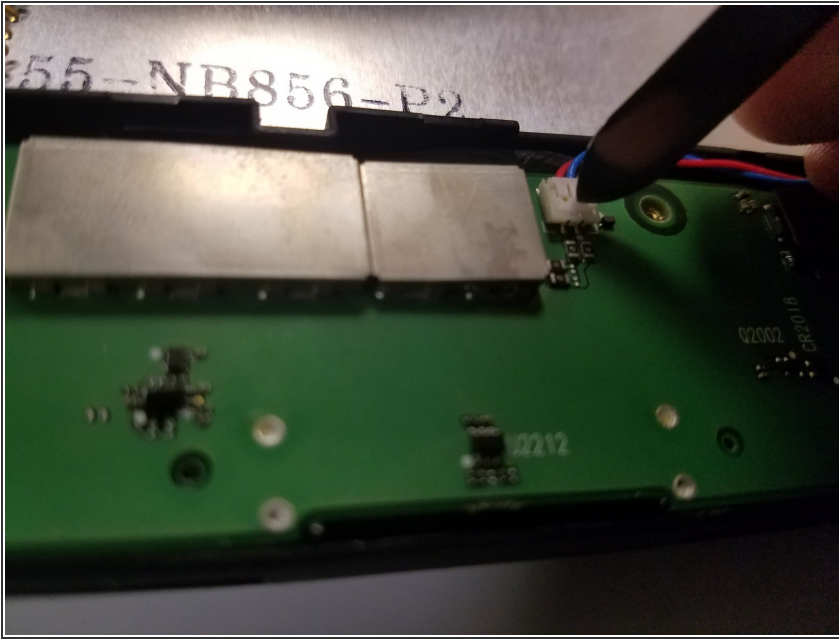
- Locate the two speakers in each of the bottom corners (left and right).

Step 10



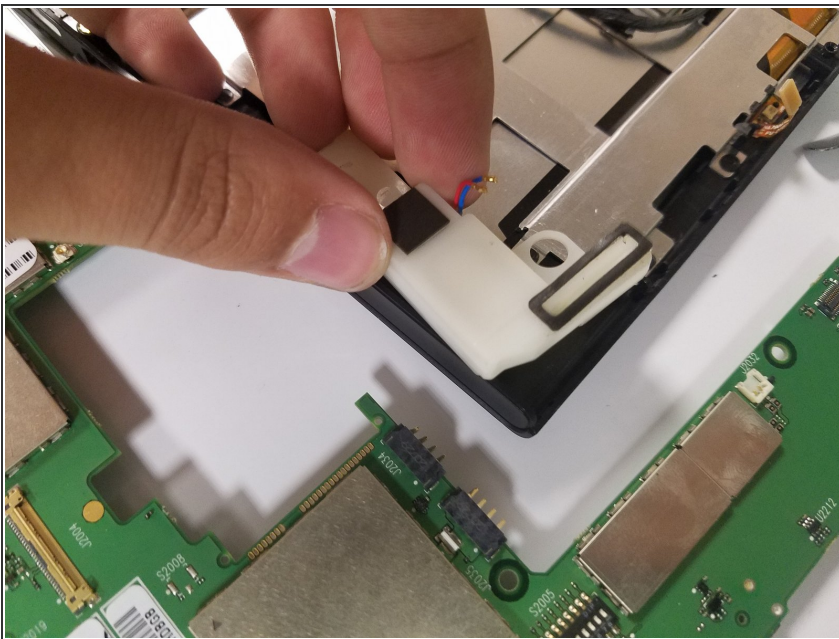
- Use the Phillips PH1 screwdriver to remove the 3x2.5mm screw on the right speaker.

Step 11



- Use the spudger to disconnect the speakers.

Step 12



- Lift the speakers out.

To reassemble your device, follow these instructions in reverse order.