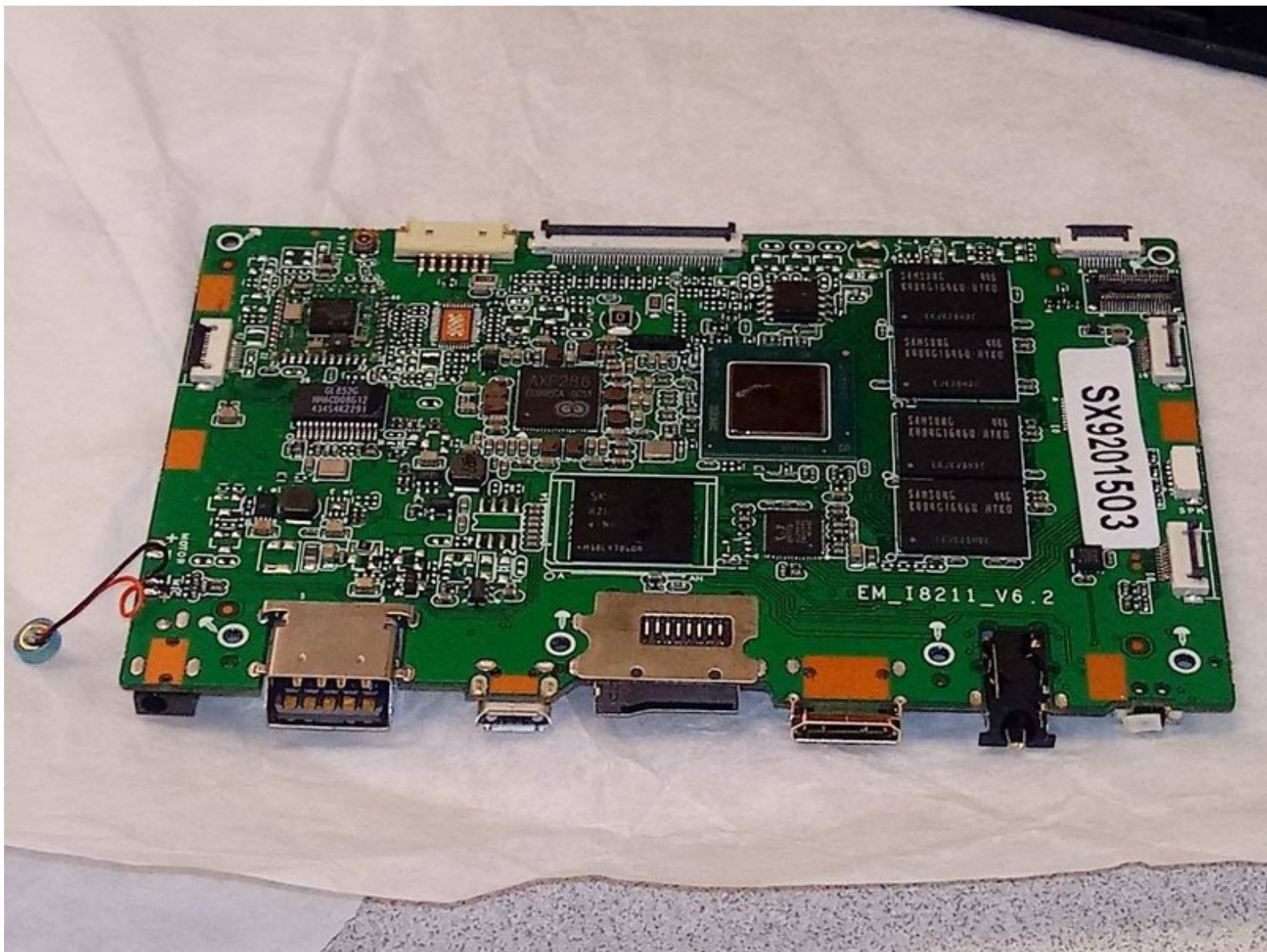




Quantum View 10.1 Motherboard Replacement

How to access and replace the motherboard. Note that items such as the charging port, sleep button and SD card reader are built on to the motherboard.

Written By: stephen Munchinsky



INTRODUCTION

How to access and replace the motherboard. Note that items such as the charging port, sleep button and SD card reader are built on to the motherboard.



TOOLS:

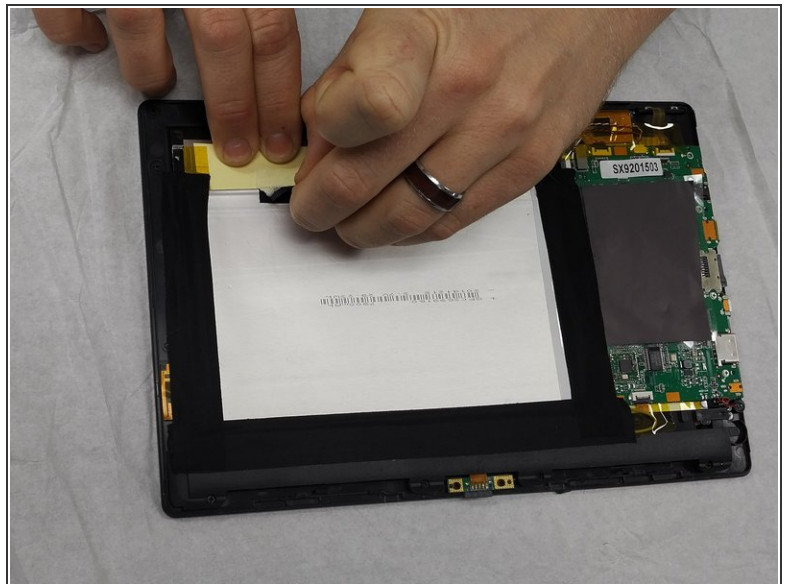
- [iFixit Opening Tools](#) (1)
 - [Phillips #00 Screwdriver](#) (1)
-

Step 1 — Open Quantum View case



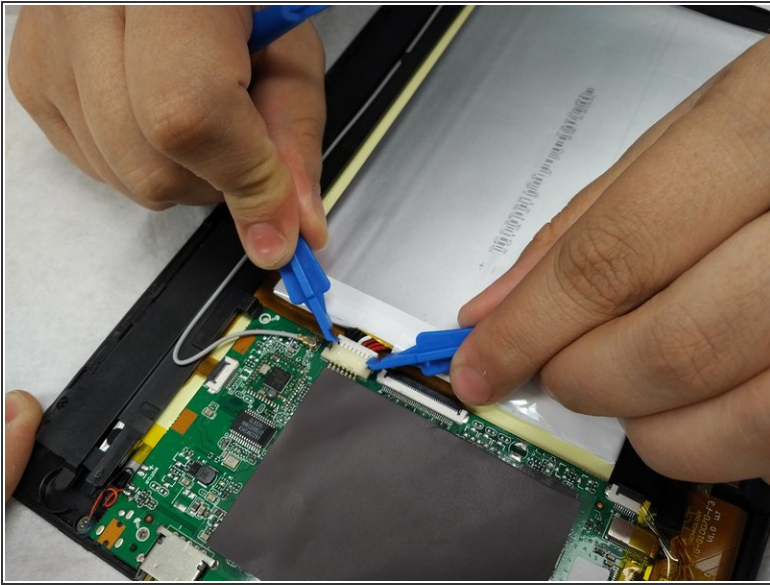
- Start by turning the tablet over with the screen down. Carefully use a plastic opening tool to pry the cover off. Start from the corner opposite the hibernate button.

Step 2 — Removing the electrical tape and magnets.



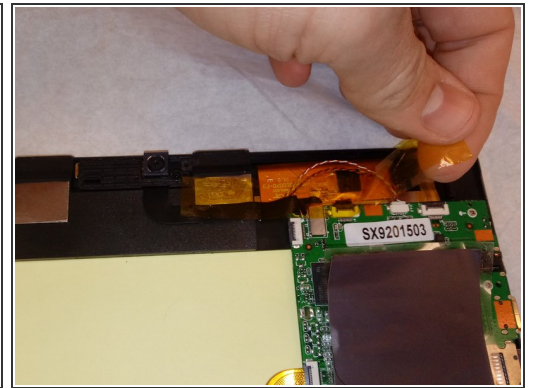
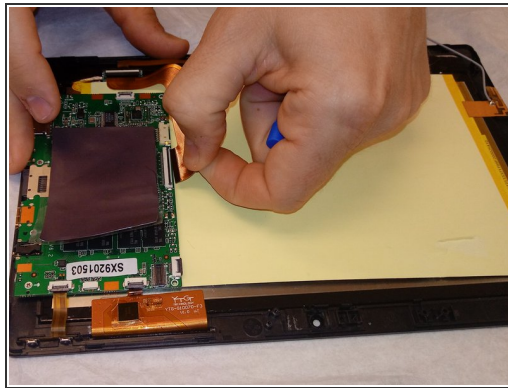
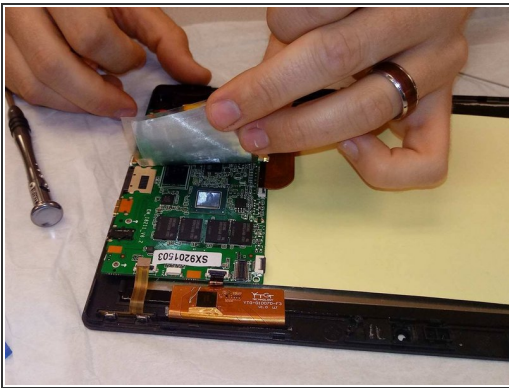
- Pick up the magnets from the bottom edge of the tablet next to the keyboard connection and put them in a place that they will not get lost. Then carefully remove all 4 strips of electrical tape.

Step 3 — Unhooking the battery



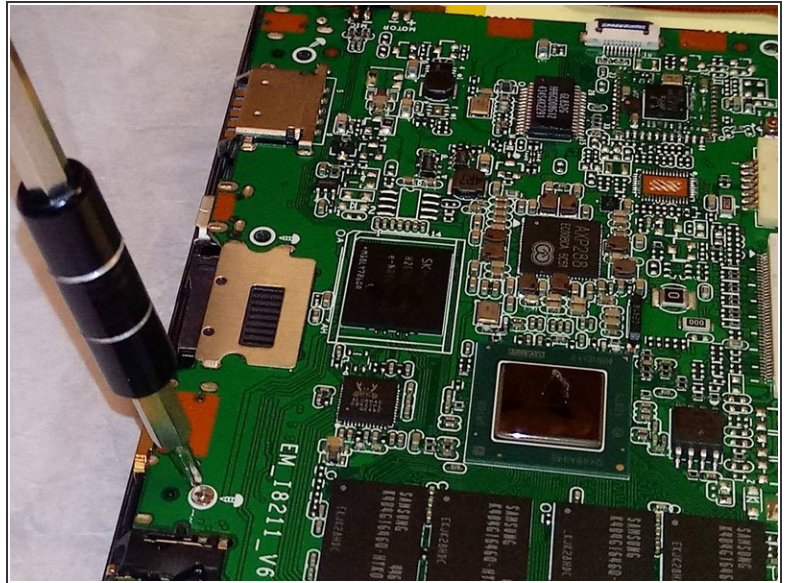
- Using a small plastic opening tool; gently pull the connection off of the motherboard.

Step 4 — Disconnect Cables



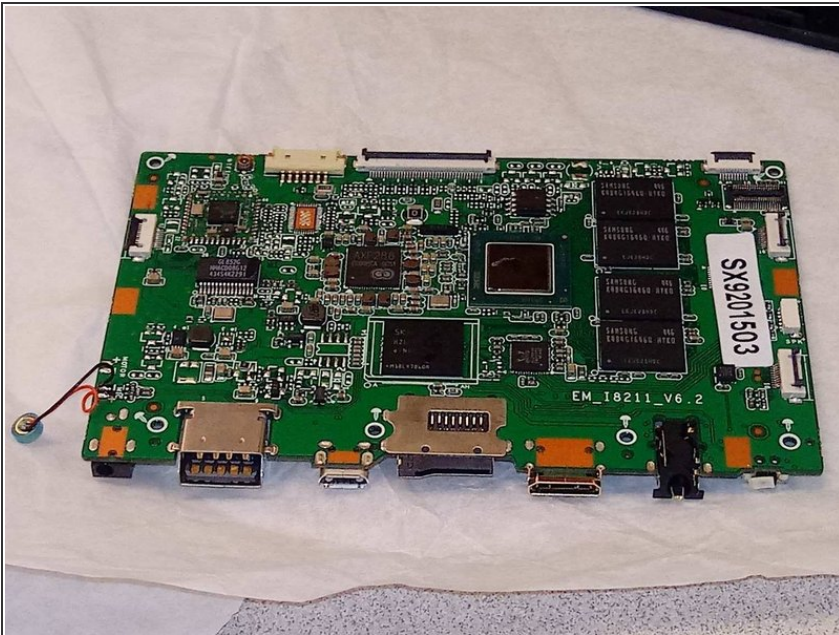
- Remove silver protective sticker and set to the side.
- Ensure all ribbon cables and other connectors are disconnected from mother board.

Step 5 — Remove Screws



- There are 4 small screws connecting the motherboard to the frame of the device. Take a PH00 bit screw driver to remove these screws.

Step 6 — Remove Motherboard



- Gently and carefully lift motherboard straight up from frame.

To reassemble your device, follow these instructions in reverse order.

This document was generated on 2019-09-17 11:16:13 PM (MST).

